

Project		Catalog #		Type	
Prepared by		Notes		Date	



WaveLinx Wired

TSI-1-NA

TSE Touchscreen Interface

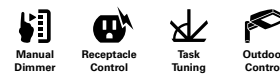
Typical Applications

Office • Education • Healthcare • Hospitality • Retail

Interactive Menu

- Order Information page 2
- Additional Resources page 3
- Wiring Diagrams page 3
- Connected Systems page 5
- Product Warranty

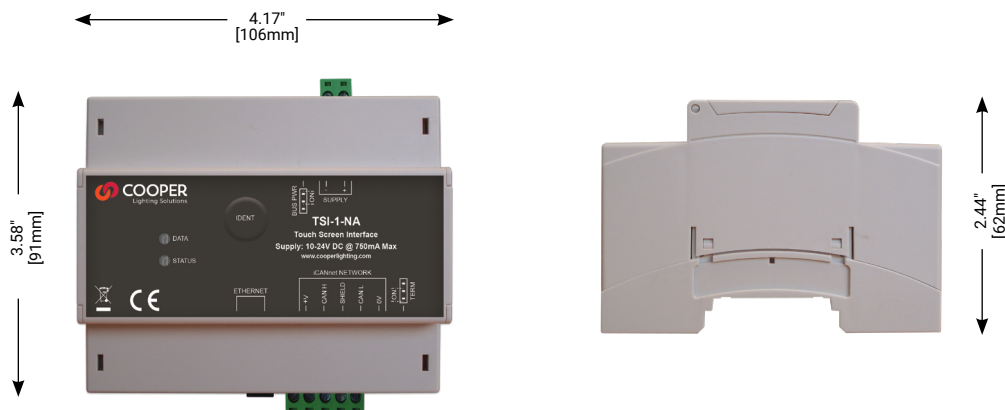
Product Features



Top Product Features

- Connects WaveLinx Wired TSE55-B and TSE80-B touchscreens to the WaveLinx Wired network
- Connects multiple TSE screens and mobile devices running the TSEtouch app
- Configurable IP address
- Built-in timeclock for scheduled events
- Supports smart device applications (iPhone®/ iPod touch®/ iPad® / Android)
- BACnet communication over TCP/IP
- CE compliant to all relevant standards
- Designed and manufactured to ISO 9001:2015 standards

Dimensional Details



[additional product diagrams](#)

Order Information

Catalog Number

Catalog Number	Description
TSI-1-NA	Touchscreen interface accessory

Product Specifications

Key Features

- TSI-1-NA Touchscreen Interface enables the use of multiple TSE55-B and TSE80-B color touchscreens
- Ensures synchronization of screen configurations across an entire building installation
- Facilitates connection to WaveLinx Wired TSEtouch app enabling personalized control from your compatible hand held smart device
- A built in scheduler allows for timed events to suit your building needs and BACnet capabilities for the integration of building services such as HVAC, further enhancing the capabilities of this powerful interface unit
- Can be operated as a standalone unit for timeclock functionality or with a TSE Touchscreen. If operated as a standalone unit, schedules are edited via the WaveLinx Wired Configuration software suite.

Mechanical

Enclosure Size: 4.17w" x 3.58h" x 2.44d" (106mm x 91mm x 62mm)

Weight: 0.49 lbs (0.22 kg)

Environment:

- **Operating temperature:** 35°F to 122°F (2°C to 50°C)
- **Humidity:** +5 to 95% non-condensing
- Note: All enclosures must be adequately ventilated

Electrical

Supply:

- Supply: +10 - 24V DC @ 750 mA Max (via external power supply)

Standards/Ratings

Environmental Regulations:

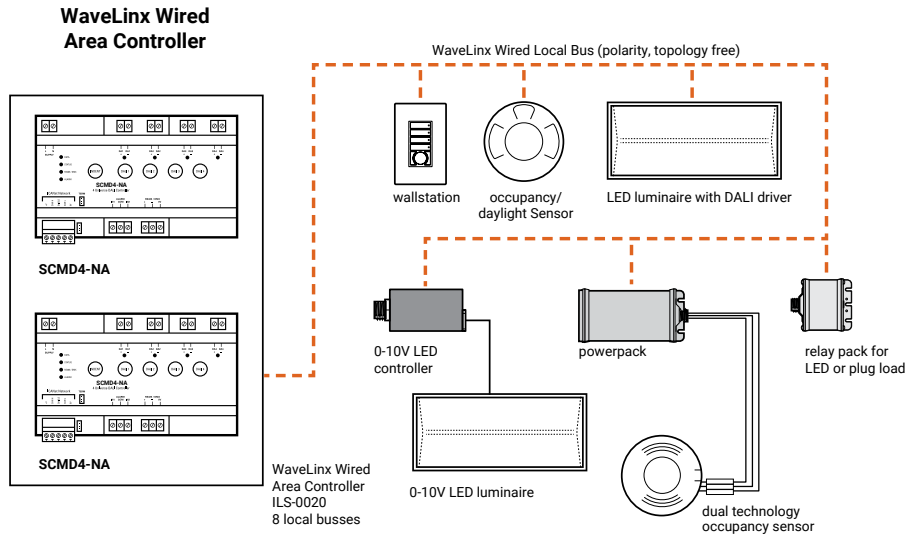
- IP20

Warranty

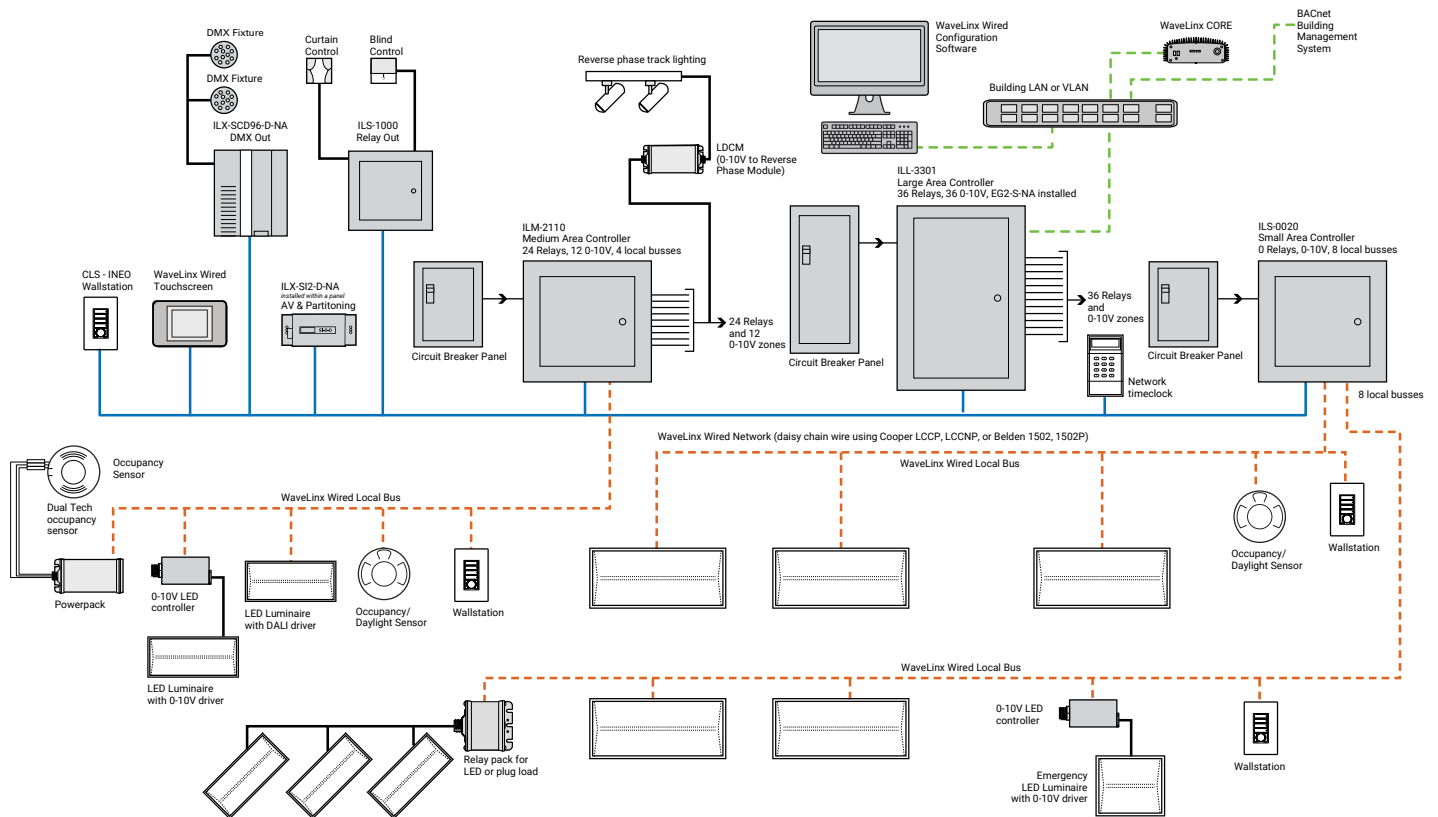
Five year warranty standard

System architecture

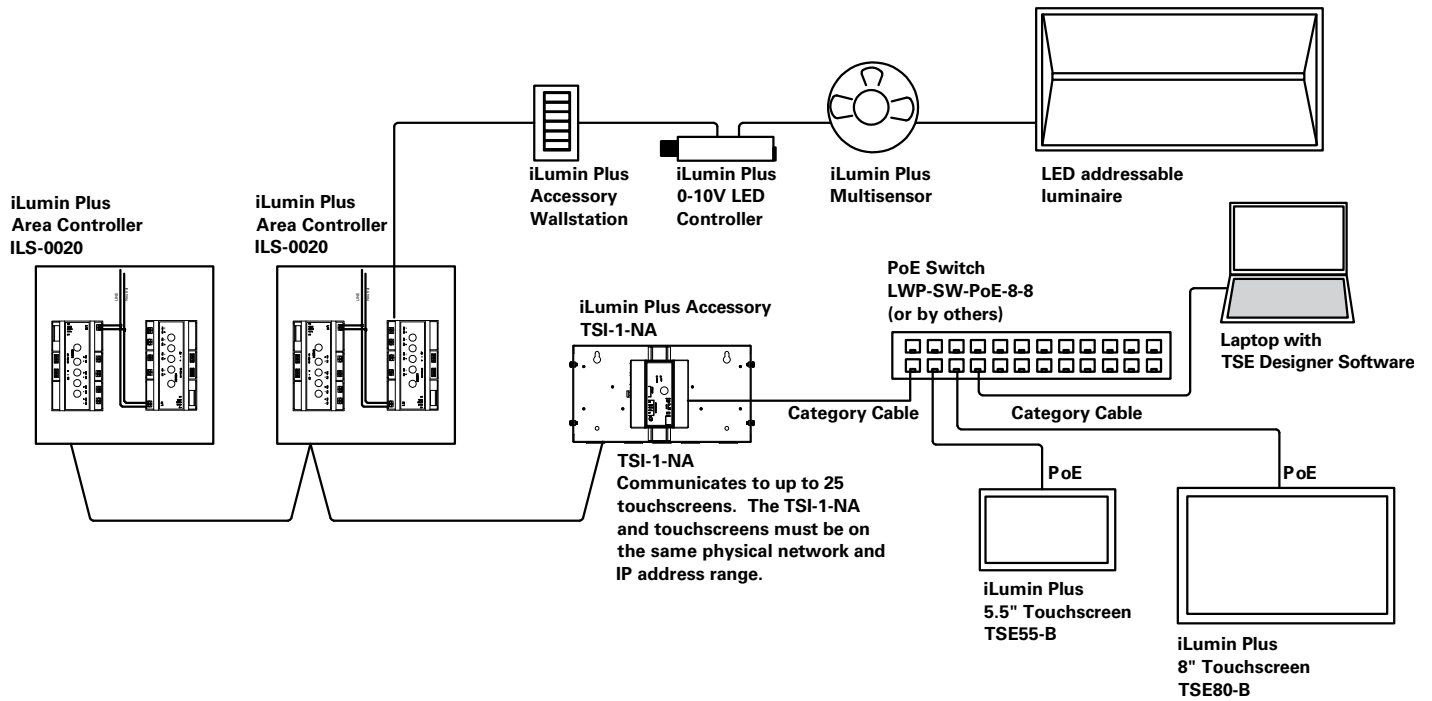
Simple WaveLinX Wired system



Complete WaveLinX Wired system



Typical schematic



Sample System Topology:

This diagram shows the main components of the WaveLinX wired and PRO wireless connected lighting system.

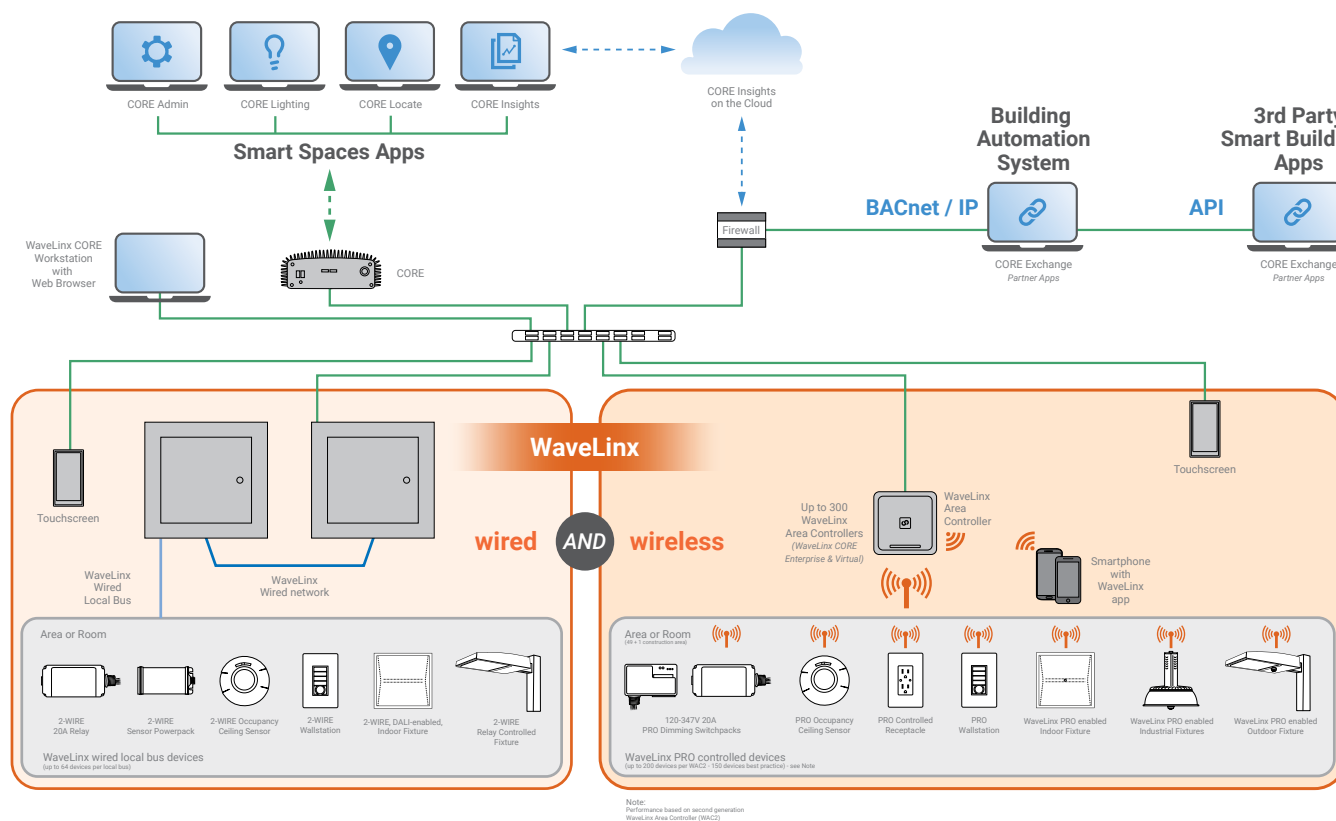
The **WaveLinX PRO wireless system** communicates using wireless mesh technology based on the IEEE 802.15.4 standard. A PoE LAN connection for each WaveLinX Area Controller (WAC) is required for power and data access to the building lighting network.

The **WaveLinX wired system** controls the devices using relay, 0-10V, DMX and the WaveLinX wired digital local bus. The WaveLinX wired system connects to the building LAN using the EG2 module. Each WaveLinX wired area controller communicates on the WaveLinX wired network.

WaveLinX Area Controllers (WAC) and WaveLinX Ethernet Gateways (EG2) communicate with WaveLinX CORE over the Ethernet network.

Please refer to the WaveLinX PRO Wireless Network and IT Guidance Technical Guide and WaveLinX Wired Network and IT Guidance Technical Guide for more information.

[View
WaveLinX Network
and IT Guidance
Technical Guide](#)



Control Systems

- WaveLinX
- WaveLinX wired
- VividTune