



HALO[®]

808 High Performance
LED Track Lighting



808 High Performance

The HALO 808 High Performance LED Track series features the latest in LED and power technology providing higher performance and greater savings than the original 808 Series.

The HALO L808 High Performance offers a new low profile, low glare, tool-less track head for the L808 series. The 808 High Performance now offers higher lumen packages, higher LPW (Lumens Per Watt), better color uniformity, more precise beam angles and a significantly higher CBCP (Center Beam Candle Power) than the Gen I L808.





808 High Performance

The Halo LED luminaire family now offers a modern, low profile, tool-less track head in the L808 Series.

The Halo L808 High Performance series is perfect for applications requiring a superior performance from a discrete light source. This track head utilizes a COB (Chip On Board) technology that is regressed deep into the fixture to minimize glare and improve cut off. This design ensures that the customer’s attention is on your products and not the light source.

The L808 High Performance Track head is a durable, die-cast aluminum construction, traditional style flatback cylinder. Available in 3” and 4” diameters, and a yoke mount design, it is offered in three different lumen packages: 1300lm (3”), 1800 lumens (3”), 3000lm (4”). The optics in the series offer maximum versatility with tool-less field interchangeable (except for 3” SP) optics. The L808 High Performance offers high efficacies at low wattages (12W, 20W, 37W) with higher color fidelity . The series offers 90 CRI and a choice of 4 different color temperatures- 2700K, 3000K, 3500K and 4000K.



808 High Performance

Finishes

Matte White (P)



Matte Black (MB)



Aluminum Haze (AH)



808 High Performance

Technical specifications

Installer Friendly features

- 3 configurable optics that can be field changed
- Tool-less optical removal
- Tool-less snout with locking teeth
- Tool-less adjustment $\pm 180^\circ$ vertically and $\pm 350^\circ$ horizontally
- Fixture can hold up to 2 pieces of PAR20/PAR30 media

Features

- Flat back 3" Cylinder (1300lm and 1800lm)
- Flat back 4" Cylinder (3000lm)
- 1300lm, 1800lm, 3000lm
- Full selection of 2700K, 3000K, 4000K color temperatures
- Optical distributions Narrow Flood, Flood, and Spot
- Finishes of Matte Black, Matte White, and Aluminum Haze
- 90CRI
- 120V/60Hz
- Triac dimmable down to 5%
- Can hold up to 2 pieces of media (max .270" thick)
- L70 @50,000 hrs
- Five year warranty
- cULus
- DLC listed
- NSF/ANSI 2 (non-food zone)

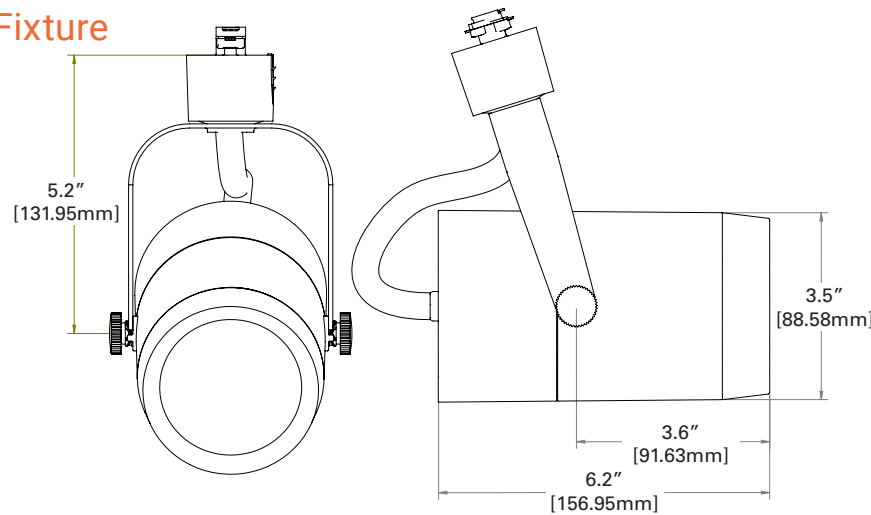
Compliance and approvals



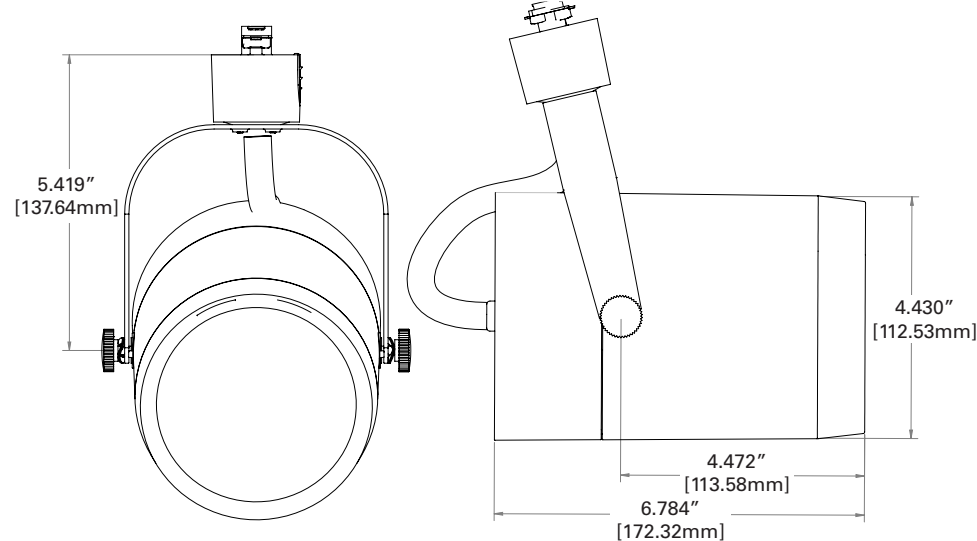
Can be used to comply with California Title 24 High Efficacy requirements. Certified to California Title 20 Appliance Efficiency Database.

Dimensional details

3-Inch Fixture

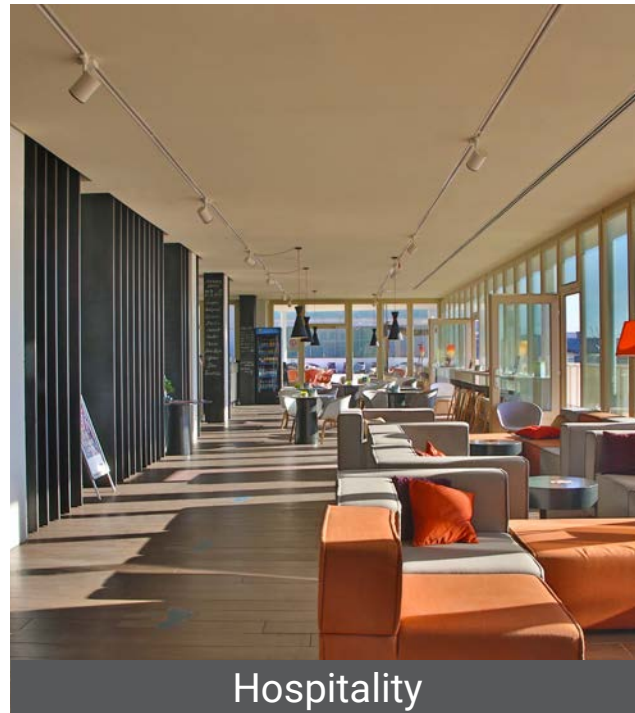


4-Inch Fixture

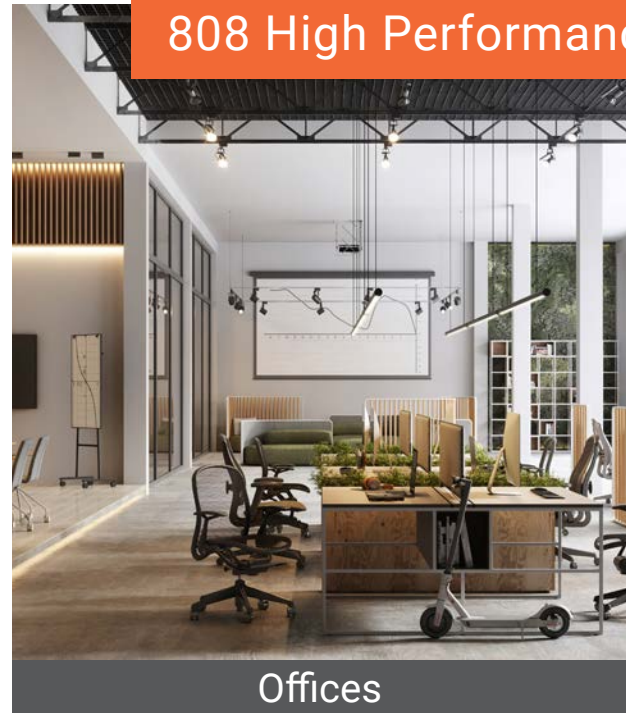


Applications

With multiple lumen outputs, multiple beam distributions, and exceptional dimming, the HALO L808 High Performance can achieve a variety of contrast ratios in lighting environments. From drawing attention to featured products to creating premium ambiance in any setting, the L808 High Performance is the right lighting tool to accent multiple indoor environments.



Hospitality



Offices



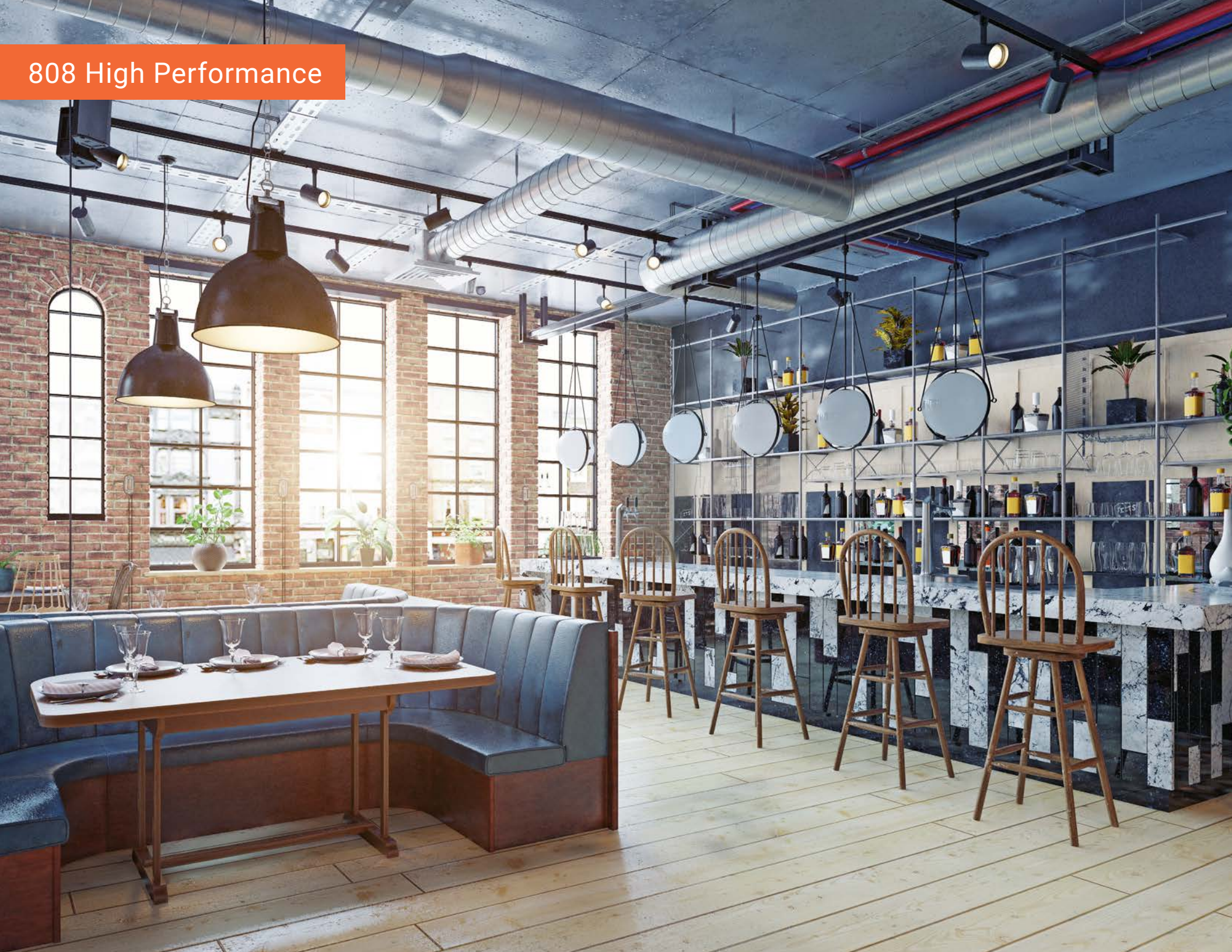
Restaurants



Retail



Lobbies



808 High Performance

Order Information

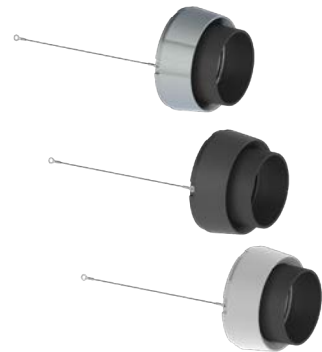
SAMPLE ORDER NUMBER: **L80830NF935P**

808 High Performance

Track	Size	Output	Optic	CRI & CCT	Finish	Voltage
L =Halo Power Trac & Lazer Track L2G =Global TEK/HTEK ⁽¹⁾ LJ =Juno Track ⁽²⁾ LL =Lightolier ⁽³⁾	808	13 =1300 L 3-Inch 18 =1800 L 3-Inch 30 =3000 L 4-Inch	SP =13 Degree Spot ⁽⁴⁾ NF =22 Degree Narrow Flood FL =32 Degree Flood	927 =2700K / 90 CRI 930 =3000K / 90 CRI 935 =3500K / 90 CRI 940 =4000K / 90 CRI	MB =Matte Black P =Matte White AH =Aluminum Haze	Blank =120V 277 =277V ⁽⁴⁾
Notes (1) Global® is a registered trademark of Nordic Aluminum. (2) Juno® 1 single circuit and 2-circuit track contact. Juno® is a registered trademark of Juno® Lighting. (3) Lightolier® Lyfespace 6000 single circuit and 2 circuit track contact. Lightolier® is a registered trademark of Philips Lighting.	Notes 808 track head holds (1) media, and accessory snoot holds (2) media	Notes	Notes (4) Optics that are interchangeable: >3-Inch NF and FL >4-Inch SP, NF and FL (SP optic on 3-Inch is fixed and not interchangeable)	Notes	Notes	Notes (4) 277V is only available for Global HTEK track. L2G must be used

Accessories

Accessory Snoot



Description
White, Black and Aluminum Haze Snoot to be used as an accessory with the HALO 808 High Performance.

- 808MHS3P** = 808 Media Snoot, 3" White
- 808MHS3MB** = 808 Media Snoot, 3" Matte Black
- 808MHS3AH** = 808 Media Snoot, 3" Aluminum Haze

- 808MHS4P** = 808 Media Snoot, 4" White
- 808MHS4MB** = 808 Media Snoot, 4" Matte Black
- 808MHS4AH** = 808 Media Snoot, 4" Aluminum Haze

Lens Media



Description
The Diffuse soft focus lens provides an additional even beam spread. The Linear Spread Lens fans out the beam to produce a wide rectangular smooth pattern. The Hex Cell Louver controls the light beam and prevents unwanted spill light providing a 45 deg cut off.

- LND-DSL3** = Diffuse Soft Focus Lens 3"
- LND-LSL3** = Linear Spread Lens 3"
- LND-HCL3** = Hexcell Louver 3"
- LND-DSL4** = Diffuse Soft Focus Lens 4"
- LND-LSL4** = Linear Spread Lens 4"
- LND-HCL4** = Hexcell Louver 4"

Interchangeable Reflector Optics



Description
The interchangeable HALO 808 High Performance optic accessories can be used to achieve a Spot distribution for the 3000 lumen package and a flood and narrow flood beam for all lumen packages.

- 808OPK3FL** = 3" Flood Optic
- 808OPK3NF** = 3" Narrow Flood Optic

- 808OPK4FL** = 4" Flood Optic
- 808OPK4NF** = 4" Narrow Flood Optic
- 808OPK4SP** = 4" Spot Optic

Monopoint Canopy Adapter



Description
Mounts permanently to an outlet box. L973-4 1/2" sq allows a lampholder to a 500W maximum to be converted to a canopy installation.

- LZR209- 5" diameter, Mounts directly to junction box, 500W maximum.
- L973PN** = Halo Power Trac square canopy adapter, matte white
- L973MB** = Halo Power Trac square canopy adapter, matte black
- LZR209P** = Lazer Track round monopoint, matte white
- LZR209MB** = Lazer Track round monopoint, matte black

Lighting Product Lines

Ametrix
AtLite
Corelite
Ephesus
Fail-Safe
Halo
Halo Commercial
Invue
io
Iris
Lumark
Lumière
McGraw-Edison
Metalux
MWS
Neo-Ray
Portfolio
RSA
Shaper
Streetworks
Sure-Lites

Controls Product Lines

Fifth Light Technology
Greengate
iLight (International Only)
iLumin
Zero 88

Connected Lighting Systems

Distributed Low-Voltage Power
HALO Home
iLumin Plus
Enlighted
WaveLinx
Trellix



Cooper Lighting Solutions
1121 Highway 74 South
Peachtree City, GA 30269
P: 770-486-4800
www.cooperlighting.com

Canada Sales
5925 McLaughlin Road
Mississauga, Ontario L5R 1B8
P: 905-501-3000
F: 905-501-3172

© 2022 Cooper Lighting Solutions
All Rights Reserved
Printed in USA
Publication No. BR51830622EN
April 27, 2022 2:58 PM

Cooper Lighting Solutions is a registered trademark.

All other trademarks are property of their respective owners.

Product availability, specifications, and compliances are subject to change without notice.