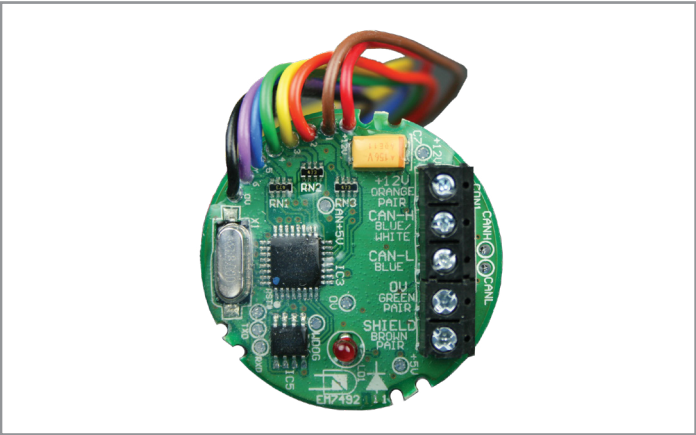


Project		Catalog #		Type	
Prepared by		Notes		Date	



WaveLinx Wired

UIM-NA

Mini Universal Interface Module

Typical Applications

Office • Education • Healthcare • Hospitality • Retail

Interactive Menu

- Ordering Information [page 2](#)
- Additional Resources [page 3](#)
- Connected Systems [page 5](#)
- Product Warranty

Product Features



Demand Response



WaveLinx Wired 5-Wire Bus



Receptacle Control



Task Tuning

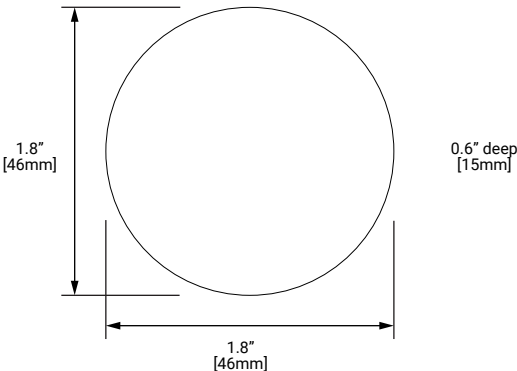


Occupancy Sensor

Top Product Features

- 6 inputs which can be individually configured
- 8 sequences with up to 30 steps per sequence
- Only 45mm in diameter so can easily fit in a junction box
- Configuration stored in non volatile memory
- Configurable startup mode

Dimensional and Wiring Details



Order Information

Catalog Number

Catalog Number	Description
UIM-NA	Mini UIG interface module

Product Specifications

Key Features

- 6 inputs which each can be individually configured as 0-5V analog, digital or photoelectric cell inputs
- 8 sequences with up to 30 steps per sequence
- 1.7" diameter interface easily fits in standard junction boxes
- Configuration stored in Non Volatile EEPROM
- Firmware storage in reflashable FLASH memory over WaveLinx Wired network
- Configurable start up mode

Standards/Ratings

- Manufactured in an ISO 9001 certified factory
- CE compliant to all relevant standards
- cULus Listed - Energy Management Equipment (UL916)
- Manufactured in an ISO 9001 certified factory
- Meets ASHRAE Standard 90.1 requirements
- Meets IECC 2015 requirements
- Meets CEC Title 24 requirements

Product Safety:

- IEC 60950-1
- UL 60950-1
- EN 60950-1
- CAN/CSA-C22.2 No. 60950-1

Environmental Regulations:

- RoHS Directive 2011/65/EU
- WEEE Directive 2012/19/EU

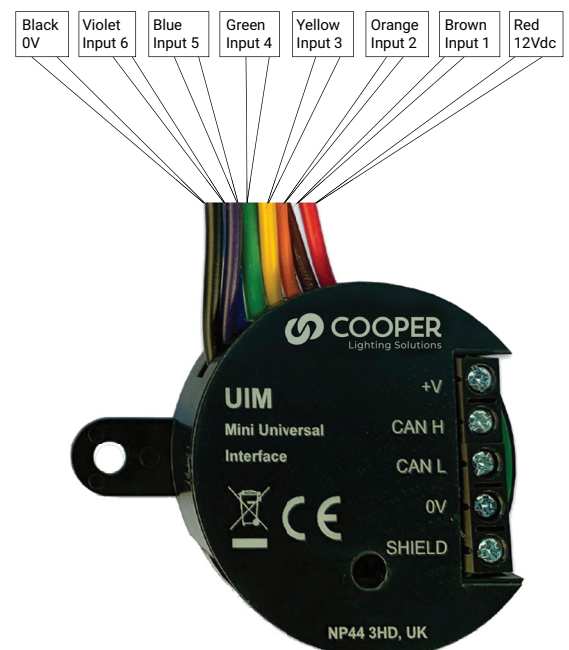
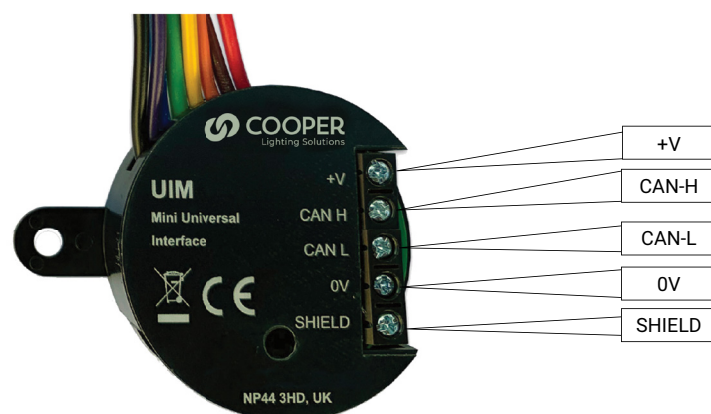
Warranty

Five-year warranty standard

Overview

The UIM-NA (Mini Universal Interface) has 6 inputs which can be individually configured as analogue inputs, digital inputs or photoelectric cell inputs. Press and Release actions can be defined individually for each of the inputs through software. This allows custom controls to be added to the WaveLinx Wired system.

Wiring Details

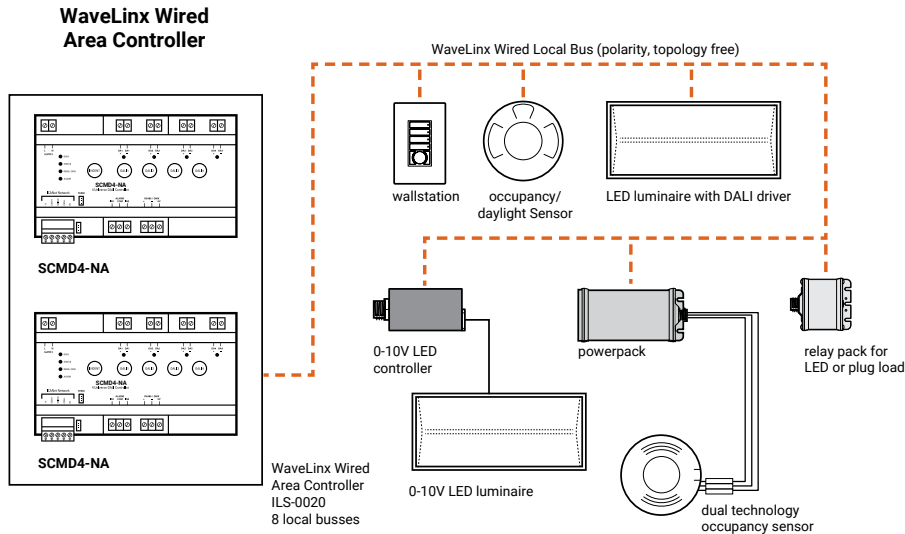


* Wiring from UIM-NA to connected input devices should not exceed 32 feet.

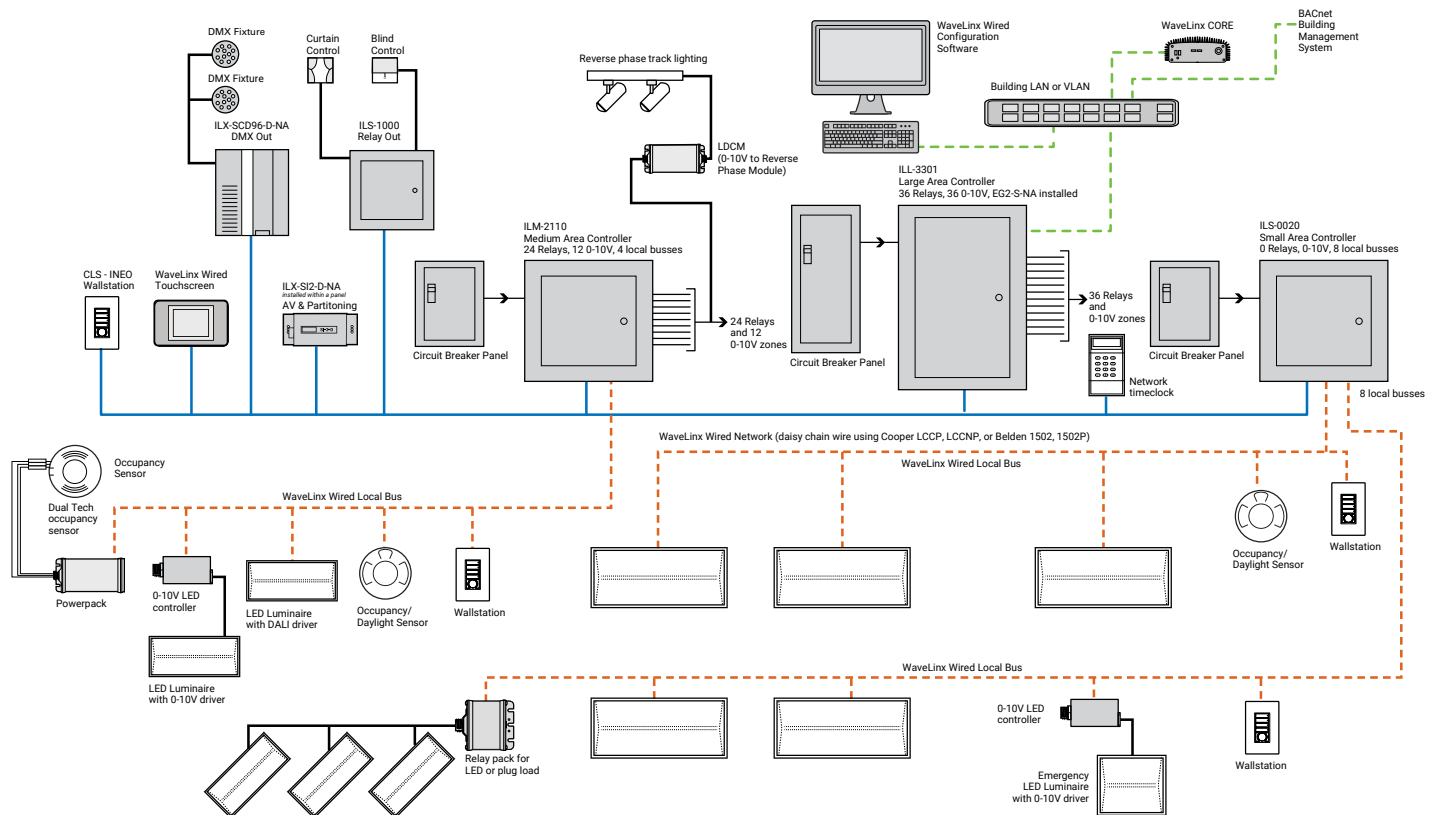
** Devices such as occupancy sensors may require switchpacks for proper operation.

System architecture

Simple WaveLinX Wired system



Complete WaveLinX Wired system



 [View WaveLinx Network and IT Guidance Technical Guide](#)

- WaveLinx
- WaveLinx wired
- VividTune