

Project		Catalog #		Type	
Prepared by		Notes		Date	



## Portfolio

### LERS4B/LESQS4B/LSRSYM4B/ LSSQSYM4B Cylinders

LERS4B/LESQS4B  
LED 4" Shallow Round and Square Cylinder

#### Typical Applications

Office • Education • Healthcare • Hospitality • Retail • Residential

#### Interactive Menu

- Order Information [page 2](#)
- Product Specifications [page 4](#)
- Energy Data [page 4](#)
- Photometric Data [page 5](#)
- Connected Systems [page 8](#)
- Product Warranty

#### Product Certification



#### Product Features

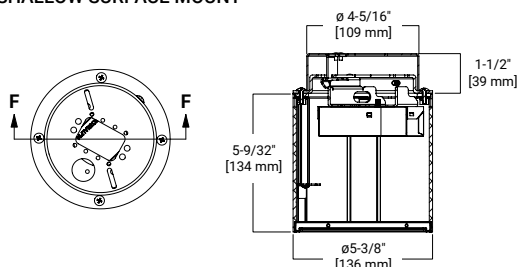


#### Top Product Features

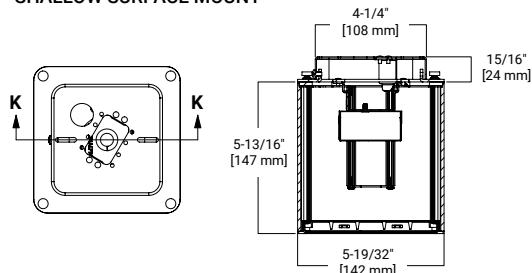
- 250 to 3,000 lumens; Offered in 90, 97 and 98 CRI
- Round or square small surface-mount cylinders; Ceiling, wall, stem, up/down, yoke mount adjustable, LuxWire power over cable
- Extruded aluminum housing; Matte Black, White, Bronze and Silver paint finishes
- 6 color temperatures: 2400K, 2700K, 3000K, 3500K, 4000K and 5000K CCT; D2W™ option from 3000K to 1850K
- W2N Tunable White 2700K-6500K or 2000K-5000K (remote only)
- Options to meet Trade Agreements Act requirements

#### Dimensional and Mounting Details

4IN ROUND CYLINDER  
SHALLOW SURFACE MOUNT



4IN SQUARE CYLINDER  
SHALLOW SURFACE MOUNT



Portfolio

LERS4B/LESQS4B Cylinders

Order Information

SAMPLE ORDER NUMBER: LERS4B10D010TRP

Domestic Preferences	Cylinder	Lumens	Voltage	Driver	Remote	Finish
Domestic Preferences <sup>(29)</sup>	Cylinder	Lumens	Voltage	Driver	Remote <sup>(8)</sup>	Finish <sup>(10)</sup>
[Blank]=Standard TAA=Trade Agreements Act	<b>Ceiling surface mount</b> LERS4B=4-inch round shallow surface ceiling mount LESQS4B= 4-inch shallow square surface ceiling mount square aperture <sup>(1)</sup> LESQRS4B= 4-inch shallow square surface ceiling mount round aperture <sup>(2)</sup> LESQSMS4B = 4-inch shallow square surface ceiling mount square aperture with surface mount conduit canopy <sup>(1)</sup> LESQRSMS4B = 4-inch shallow square surface ceiling mount, round aperture with surface mount conduit canopy <sup>(2)</sup> <b>Wall mount</b> LERSWM4B= 4-inch round shallow wall mount LERSUD4B= 4-inch round shallow wall mount up/down <sup>(4)</sup> LESQWMS4B= 4-inch shallow square wall mount square aperture <sup>(1)</sup> LESQRWMS4B= 4-inch shallow square wall mount round aperture <sup>(2)</sup> LESQUDS4B= 4-inch shallow square wall mount up/down square aperture <sup>(3)</sup> LESQRUDS4B= 4-inch shallow square wall mount up/down round aperture <sup>(4)</sup> <b>LuxWire aircraft cable</b> LESQUDSPC4B = 4-inch shallow up/down square, square opening LuxWire aircraft cable with power 120" <sup>(3) (21) (23)</sup> LESQRUDSPC4B = 4-inch shallow up/down square, round opening LuxWire aircraft cable with power 120" <sup>(4) (21) (23)</sup> LERSUDSPC4B = 4-inch shallow up/down round LuxWire aircraft cable with power mount 120" <sup>(4) (21) (23)</sup> LERSPC4B = 4-inch shallow round ceiling surface mount LuxWire aircraft cable with power 120" LESQSPC4B = 4-inch shallow square, square aperture ceiling surface mount aircraft cable with power 120" LESQRSPC4B = 4-inch shallow square with round aperture ceiling surface mount aircraft cable with power 120" <b>Yoke mount</b> LERSYM4B = 4-inch shallow round yoke mount <sup>(24)</sup> LESQYMS4B = 4-inch shallow square yoke mount square aperture <sup>(1) (24)</sup> LESQRYMS4B = 4-inch shallow square yoke mount round aperture <sup>(2) (24)</sup>	<b>05=500 lumens<sup>(28)</sup></b> <b>10=1000 lumens</b> <b>15=1500 lumens</b> <b>20=2000 lumens</b> <b>30=3000 lumens<sup>(5)</sup></b>	<b>blank=120-277V</b> <b>3=347V<sup>(6)</sup></b>	<b>D010</b> =0-10V Dimming, 1% to 100%, 120V-277V <b>D010TR</b> =0-10V (120-277V) or line voltage (120V) dimming, 5-100% <b>DE010</b> =0-10V Linear Dimming, 0% to 100%, 120V-277V <sup>(19)</sup> <b>DSL</b> T=5th Light® DALI DT6 Logarithmic Dimming, 0% to 100%, 120V-277V <sup>(19)</sup> <b>DMX</b> =DMX/RDM Logarithmic Dimming, 0% to 100%, 120V-277V <sup>(7)</sup> <sup>(19)</sup> <b>DMXC5</b> =DMX/RDM Logarithmic Dimming, 0% to 100%, 120V-277V, with RJ45 connection <sup>(7) (19)</sup> <b>DL2</b> =1 to 100% dimming, 120V Lutron Hi-Lume forward phase dimming <sup>(19)</sup> <b>DLE</b> =Lutron Ecosystem dimming 1% to 100%, 120-277V <sup>(19)</sup>  <b>Tunable White 1000-2000 lumens<sup>(22)</sup></b> <b>DE010W2N2765</b> =0-10V dimming, 0% to 100%, 120-277V, 2700K-6500K <b>DE010W2N2050</b> =0-10V dimming, 0% to 100%, 120-277V, 2000K-5000K <b>DSL</b> TW2N2765=5th Light DALI DT6 Logarithmic Dimming, 0% to 100%, 120V-277V, 2700K-6500K <b>DSL</b> TW2N2050=5th Light DALI DT6 Logarithmic Dimming, 0% to 100%, 120V-277V, 2000K-5000K	<b>blank</b> =Integral driver <b>R</b> =Remote driver <sup>(9)</sup>	<b>P</b> =White <b>MB</b> =Matte Black <b>SL</b> =Silver <b>BZ</b> =Bronze

Power Module Choose between EC4B downlight or ECA4B adjustable

SAMPLE ORDER NUMBER: EC4B10208035

Domestic Preferences	Power Module	Lumen Levels	Color
Domestic Preferences <sup>(29)</sup>	Power Module	Lumen Levels <sup>(14)</sup>	Color
[Blank]=Standard TAA=Trade Agreements Act	EC4B=4-inch cylinder light engine	<b>1020</b> =1000, 1500, or 2000 Lumens <b>3040</b> =3000 Lumens	<b>80 CRI</b> <b>8027</b> = 80CRI, 2700K <b>8030</b> = 80CRI, 3000K <b>8035</b> = 80CRI, 3500K <b>8040</b> = 80CRI, 4000K <b>8050</b> = 80CRI, 5000K <b>90 CRI</b> <b>9024</b> = 90CRI, 2400K <b>9027</b> = 90CRI, 2700K <b>9030</b> = 90CRI, 3000K <b>9035</b> = 90CRI, 3500K <b>9040</b> = 90CRI, 4000K <b>9050</b> = 90CRI, 5000K <b>97 CRI</b> <b>9727</b> = 97CRI, 2700K <b>9730</b> = 97CRI, 3000K <b>109030D2W</b> =1000 Lumen, 90 CRI, Dim 2 Warm, IC Rated <b>159030D2W</b> =1500 Lumen, 90 CRI, Dim 2 Warm, IC Rated <b>209030D2W</b> =2000 Lumen, 90 CRI, Dim 2 Warm, IC Rated <b>309030D2W</b> =3000 Lumen, 90 CRI, Dim 2 Warm

SAMPLE ORDER NUMBER: ECA4B1020FL8030MW

Domestic Preferences	Power Module	Distribution	Color	Finish
Domestic Preferences <sup>(29)</sup>	Power Module <sup>(15)</sup>	Distribution	Color	Finish
[Blank]=Standard TAA=Trade Agreements Act	ECA4B1020 =4-inch cylinder adjustable light engine; 1000, 1500, or 2000 Lumens	NFL=Narrow Flood FL=Flood	<b>80 CRI</b> <b>8027</b> = 80CRI, 2700K <b>8030</b> = 80CRI, 3000K <b>8035</b> = 80CRI, 3500K <b>8040</b> = 80CRI, 4000K <b>8050</b> = 80CRI, 5000K <b>90 CRI</b> <b>9024</b> = 90CRI, 2400K <b>9027</b> = 90CRI, 2700K <b>9030</b> = 90CRI, 3000K <b>9035</b> = 90CRI, 3500K <b>9040</b> = 90CRI, 4000K <b>9050</b> = 90CRI, 5000K <b>97 CRI</b> <b>9727</b> = 97CRI, 2700K <b>9730</b> = 97CRI, 3000K	<b>MW</b> =Matte White <b>MB</b> =Matte Black <b>MMS</b> =Matte Metallic Silver

Trim is included with ECA4B adjustable power module. Do not order a separate trim.

Notes

- (1) Square reflector
- (2) Round reflector
- (3) Square reflector, requires two reflectors and light engines
- (4) Round reflector, requires two reflectors and light engines
- (5) Remote driver only.
- (6) 347V integral D010 only.
- (7) DMX fixtures default to full on upon loss of DMX signal
- (8) Up down surface mount require 2 driver assemblies.
- (9) Order remote driver separately. See below to order.
- (10) Consult factory for custom finishes.
- (14) Nominal Lumens will vary depending on selected color, driver and reflector finish.
- (15) Nominal Lumens will vary depending on selected color, driver and reflector finish.

- (19) Use with remote driver.
- (20) No D2W or W2N versions.
- (21) LuxWire limited to 3000 lumens
- (22) Remote driver only. W2N not compatible with LuxWire.
- (23) Canopy mount driver available for all drivers except DMX, omit R in ordering information
- (24) Ceiling mount only
- (28) Limited to D010 drivers
- (29) Only product configurations with this designated prefix are built to be compliant with the Trade Agreements Act of 1979 (TAA) Please refer to [DOMESTIC PREFERENCES](#) website for more information. Components shipped separately may be separately analyzed under domestic preference requirements. Accessories sold separately will be separately analyzed under domestic preference requirements. Consult factory for further information.

## Order Information

SAMPLE ORDER NUMBER: 4LBSS3H

Domestic Preferences	Trim	Reflector	Finish
Domestic Preferences <sup>(25)</sup>	Trim	Reflector	Finish
<b>[Blank]</b> =Standard <b>TAA</b> =Trade Agreements Act <sup>(26)</sup>	<b>4LB</b> =4" Reflector	<b>SS3</b> =Round shallow spun aluminum <b>SCS3</b> =Round shallow die cast <b>SCSSQ3</b> =Square shallow die cast	<b>LI</b> =Specular Clear <sup>(15)</sup> <b>H</b> =Semi-Specular Clear <sup>(15)</sup> <b>WMH</b> =Warm Haze <sup>(15)</sup> <b>WH</b> =Wheat <sup>(15)</sup> <b>GPH</b> =Graphite Haze <sup>(15)</sup> <b>B</b> =Specular Black <sup>(15)</sup> <b>MW</b> =Matte White <b>MB</b> =Matte Black <sup>(16)</sup> <b>MMS</b> =Matte Metallic Silver <sup>(14)</sup>

## REQUIRED if Remote Driver (R) is specified on Cylinder

Remote Drivers	Lumens	Voltage	Driver	Options	Controls
Remote Drivers <sup>(4)</sup>	Lumens	Voltage	Driver	Options	Controls
<b>R100</b> =Remote 100 ft <b>R75</b> = Remote 75ft <b>R50</b> = Remote 50 ft <b>R25</b> = Remote 25ft <b>R15</b> = Remote 15ft <b>R5</b> = Remote 5ft <b>R2</b> = Remote 2 ft	<b>05</b> =500 lumens <sup>(28)</sup> <b>10</b> =1000 lumens <b>15</b> =1500 lumens <b>20</b> =2000 lumens <b>30</b> =3000 lumens	<b>blank</b> =120-277V <b>3</b> =347V	<b>D010</b> =0-10V Dimming, 1% to 100%, 120V-277V <b>D010TR</b> =0-10V (120-277V) or line voltage (120V) dimming, 5-100% <b>DE010</b> =0-10V Linear Dimming, 0% to 100%, 120V-277V <b>D5LT</b> =Fifth Light® DALI DT6 Logarithmic Dimming, 0% to 100%, 120V-277V <b>DMX</b> =DMX/RDM Logarithmic Dimming, 0% to 100%, 120V-277V <sup>(7)</sup> <b>DMXC5</b> =DMX/RDM Logarithmic Dimming, 0% to 100%, 120V-277V, with RJ45 connection <sup>(7)</sup> <b>DL2</b> =1 to 100% dimming, 120V Lutron Hi-Lume forward phase dimming <sup>(11)</sup> <b>DLE</b> =Lutron Ecosystem dimming 1% to 100%, 120-277V <sup>(11)</sup> <b>DLV</b> =Low Voltage System  <b>Tunable White 1000-2000 lumens<sup>(12)</sup> (22)</b> <b>DE010W2N2765</b> =0-10V dimming, 0% to 100%, 120-277V, 2700K-6500K <b>DE010W2N2050</b> =0-10V dimming, 0% to 100%, 120-277V, 2000K-5000K <b>D5LTW2N2765</b> =Fifth Light DALI DT6 Logarithmic Dimming, 0% to 100%, 120V-277V, 2700K-6500K <b>D5LTW2N2050</b> =Fifth Light DALI DT6 Logarithmic Dimming, 0% to 100%, 120V-277V, 2000K-5000K	<b>EM7</b> =7W emergency module with remote test switch <b>EM14</b> =14W emergency module with remote test switch <b>EMB0D</b> =Bodine® Emergency Module with Remote Test Switch <b>EMV7</b> =7W emergency module for use with DLV driver with remote test switch <b>EMV14</b> =14W emergency module for use with DLV driver with remote test switch	<b>WTA</b> = Factory installed WaveLinX sensor Kit <sup>(8) (26)</sup> <b>WTK</b> = Factory installed WaveLinX Lite Sensor Kit <sup>(8) (27)</sup>

Accessories	Type	Lengths
Accessories <sup>(29)</sup>	Type	Lengths
<b>Pendant Kit<sup>(17)</sup></b> <b>P436P</b> =White pendant stem kit for round suspended mount cylinder <b>P436BZ</b> =Bronze pendant stem kit for round suspended mount cylinder <b>P436MB</b> =Matte black pendant stem kit for round suspended mount cylinder <b>P436SL</b> =Silver pendant stem kit for round suspended mount cylinder	<b>Blank</b> =5 conductor for use with 0-10V driver <b>3C</b> =3 conductor for use with 120 or 277V <b>5C</b> = conductor for use with D5LT drivers <b>DMX</b> =No conductors for use with DMX and remote drivers <b>RM</b> = for Remote drivers	<b>Blank</b> =36" <b>SP</b> =* Specify 6" to 144" in 1" increments
<b>Conduit Pendant Kit<sup>(25)</sup></b> <b>PMRCC4P</b> = Round pendant stem kit with conduit knockout cover, white <b>PMRCC4MB</b> = Round pendant stem kit with conduit knockout cover, black <b>PMRCC4BZ</b> = Round pendant stem kit with conduit knockout cover, bronze <b>PMRCC4SL</b> = Round pendant stem kit with conduit knockout cover, silver	<b>PMSQCC44P</b> = Square pendant stem kit with conduit knockout cover, white <b>PMSQCC4MB</b> = Square pendant stem kit with conduit knockout cover, black <b>PMSQCC4BZ</b> = Square pendant stem kit with conduit knockout cover, bronze <b>PMSQCC4SL</b> = Square pendant stem kit with conduit knockout cover, silver	<b>Blank</b> =36" <b>SP</b> =* Specify 6" to 144" in 1" increments
<b>Aircraft cable<sup>(25)</sup></b> <b>AC4120P</b> =120" white aircraft cable kit <b>AC448P</b> =48" white aircraft cable kit <b>AC4120MB</b> =120" black aircraft cable kit <b>AC448MB</b> =48" black aircraft cable kit	<b>Blank</b> = 5 conductors <b>DMXC5</b> =DMX/RDM logarithmic Dimming with RJ45 connection	
<b>LNE4RUD</b> =up/down gasketed lens, wet location, round <b>LNS4SQUD</b> =up/down gasketed lens, wet location square  <b>Conduit Kit<sup>(25)</sup></b> <b>SMRCC4P</b> = Round conduit canopy for surface mount, white <b>SMRCC4MB</b> = Round conduit canopy for surface mount, black <b>SMRCC4BZ</b> = Round conduit canopy for surface mount, bronze <b>SMRCC4SL</b> = Round conduit canopy for surface mount, silver	<b>Connected Lighting Systems<sup>(13)</sup></b> <b>WTA</b> = Field installed WaveLinX sensor Kit <sup>(26)</sup> <b>WTK</b> = Field installed WaveLinX Lite Sensor Kit <sup>(27)</sup>	

## Notes

(7) DMX fixtures default to full on upon loss of DMX signal

(8) Up down surface mount require 2 driver assemblies

(11) Only available up to 25 ft.

(12) Not available with up/down

(13) Refer to system specifications for additional information, features, and benefits. Order either factory installed option or accessory.

(15) Anodized or spun reflectors

(16) Die cast only

(17) 0-45° slope.

(19) Use with remote driver.

(22) Remote driver only. W2N not compatible with LuxWire.

(25) Not for use with remote driver

(26) WTA = WaveLinX wireless sensor kit for daylight dimming, PIR motion sensing, and optional RLTS - Real Time Location Services, use with 0-10V only.

(27) WTK = WaveLinX Lite tile mount sensor kit for daylight dimming, PIR motion sensing, use with D010 only (Refer to WaveLinX Lite system specifications)

(28) Limited to D010 drivers

(29) Only product configurations with this designated prefix are built to be compliant with the Trade Agreements Act of 1979 (TAA). Please refer to [DOMESTIC PREFERENCES](#) website for more information. Components shipped separately may be separately analyzed under domestic preference requirements. Accessories sold separately will be separately analyzed under domestic preference requirements. Consult factory for further information.

(30) Spun aluminum only

## Product Specifications

### Lower Reflector

- Painted die-cast aluminum or spun aluminum lower reflector with a lensed upper optical chamber provides superior lumen output with minimal source brightness
- Square surface mount available with square or round reflectors
- Spun reflectors are available in all Portfolio finishes
- Directional with baffle tilts from 0°-30°

### Trim retention

- Two torsion springs hold flange tightly to the cylinder lip

### Cylinder

- Shallow round and soft square extruded aluminum
- Matte white, bronze, silver or matte black. Consult factory for custom finishes.
- Available in standard and shallow heights
- Yoke mount provides +/-45° lockable tilt

### Mounting

- Mounting plate installs to mounted junction box
- Cylinder mounts to plate with easy twist and lock hooks for ceiling mount
- For wall mount, mounting arm attaches directly to junction box via a robust mounting plate
- Offered with optional stem and aircraft cable
- LuxWire™ provides low voltage power to the cylinder via aircraft cable
- Conduit canopy allows for mounting pendant and surface cylinder on hard ceilings provided in painted finish to match the cylinder accommodates ½" or ¾" conduit.

### Thermal

- Aluminum heat sink conducts heat away from the LED module for optical performance and longer life

### LED System

- Contains a plurality of high brightness white LED's combined with high reflectance upper reflector and convex transitional lens producing even distribution with no pixilation
- Lumen output shall not decrease by more than 10% over the minimum life of 55,000 hours (L90 > 55,000 hours)
- Color variation within 2-step MacAdam ellipses
- Quick disconnect allows for tool-less replacement of LED engine from below ceiling
- Available in 2400K, 2700K, 3000K, 3500K, 4000K and 5000K correlated color temperature (CCT)
- Available in 80, 90 or 97 color rendering index (CRI)

### VividTune™ Color Tuning Solutions

- D2W™ – Dim-to-Warm shifts CCT from 3000K to 1850K as fixture dims, mimicking halogen sources
- W2N – Tunable white CCT range from 2700K to 6500K or 2000K to 5000K; 90 CRI (remote only)

### VividTune™ Color Tuning Solutions

- D2W™ – Dim-to-Warm shifts CCT from 3000K to 1850K as fixture dims, mimicking halogen sources
- W2N – Tunable white CCT range from 2700K to 6500K or 2000K to 5000K; 90 CRI (remote only)
- 98 CRI** With a full-spectrum approach using broad-blue chip technology and special phosphor blends, Thrive is able to closely match the spectrum of the sun across all color temperatures. Benefits of the natural spectrum of the sun using Thrive include superior accurate color rendering, reduced eye strain, and a higher sense of emotional well-being.

### Driver

- Standard 120-277V 0-10V dimming driver provides flicker-free dimming from 100% to 1%
- Optional 120V leading edge, <1% 0-10V, Fifth Light, DMX or Lutron®
- Remote driver option up to 100' based on driver selection
- Distributed low voltage power system combines power, lighting, and controls with ease of installation (remote only).

### Connected Lighting System Options

Two WaveLinX connected systems to choose from. Refer to WaveLinX system specifications and application guides for details.

#### WaveLinX Wireless System Tilemount Sensor Kit

- WaveLinX Wireless WTA tile mount sensor kit offers daylight dimming, PIR motion sensing, scene and zone configuration, automatic commissioning, and optional RLTS - Real Time Location Services available.

#### WaveLinX Lite System Tilemount Sensor Kit

- WaveLinX Lite WTK tile mount sensor kit offers daylight dimming and PIR motion sensing, scene and grouping configuration.

#### WaveLinX Tilemount Kits Application

- The WTA and WTK tilemount kits include a control module mounted on the luminaire junction box via 1/2" knock-out, and a tilemount sensor on 54-inch whip; for ceiling installation by direct-mount spring clips or via mounting bracket in octagon ceiling boxes.
- The WTA and WTK tilemount kits may be ordered as factory installed on the luminaire, or ordered separately as a field installed accessory kit.

### Compliance

- Pendant mount cULus Listed for damp locations
- Downlight is cULus Listed for wet locations and IP66 compliant in covered ceiling
- Wall mount cULus Listed for wet locations and IP66 compliant, requires lens accessory for up/down wall mount
- EMI/RFI emissions per FCC 47CFR Part 18 Class B consumer limits
- RoHS compliant
- Photometric testing completed in accordance with IES LM-79
- LED life testing completed in accordance with IES LM-80 standards

### Warranty

- Five-year warranty

## Energy Data

ENERGY DATA
Sound Rating: Class A standards
(Values at non-dimming line voltage)
Minimum Starting Temperature: -30°C (-22°F)
EMI/RFI: FCC Title 47 CFR, Part 15, Class B (Consumer)
Input Voltage: UNV (120V - 277V)
Power Factor: >0.90 (at nominal input 120-277 VAC & 100% of Rated Output Power)
Input Frequency: 50/60Hz

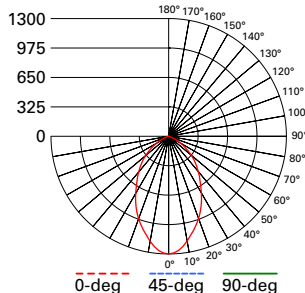
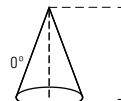
	120V		277V	
Lumens	Inrush (A)	Duration (ms)	Inrush (A)	Duration (ms)
1000 Lumen D010	1.02	0.041	2.18	0.021
1500 Lumen D010	1.02	0.042	2.24	0.064
2000 Lumen D010	1.02	0.077	2.43	0.027
3000 Lumen D010	1.15	0.067	3.26	0.027

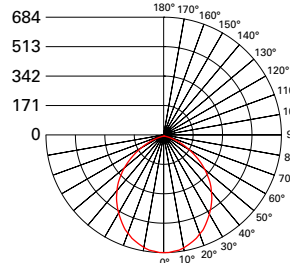
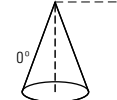
1000 Lumen D010		1500 Lumen D010	
Input Power: 11W	THD <14%	Input Power: 15.5W	THD <13%
Input Current: 0.09A	277V Input Current: 0.04A	Input Current: 0.13A	277V Input Current: 0.06A

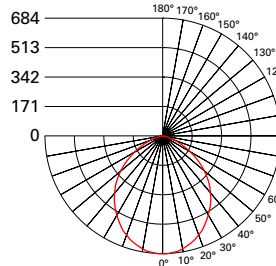
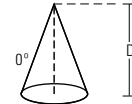
2000 Lumen D010		3000 Lumen D010	
Input Power: 21.2 W	THD <9%	Input Power: 27.6 W	THD <10%
Input Current: 0.18A	277V Input Current: 0.08A	Input Current: 0.23A	277V Input Current: 0.10A

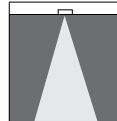
## Photometric Data

[View IES files](#)

WIDE		CANDLEPOWER DISTRIBUTION		CONE OF LIGHT		CANDELA TABLE		ZONAL LUMEN SUMMARY			LUMINANCE	
Test Number	P411911					Degrees Vertical	Canдела	Zone	Lumens	% Fixture	Average Candela Degrees	Average 0° Luminance
Housing	4B15D010					0	1300	0-30	808	44.4	45	74982
Module	EC4B10208035					5	1266	0-40	1190	65.3		
Trim	4LBSS3LI					15	1072					
Lumens	1821					25	851	0-60	1726	94.8		
Efficacy	127.3 Lm/W	35	607	45	421	0-90	1821	100	65	24597		
SC	0.91	55	236	65	83	90-180	0	0	75	1994		
UGR	22	75	4	85	0	0-180	1821	100	85	0		
		90	0	12'	9						10.8	10.8

WIDE	CANDLEPOWER DISTRIBUTION	CONE OF LIGHT	CANDELA TABLE	ZONAL LUMEN SUMMARY	LUMINANCE				
Test Number P411910	 <p>0-deg 45-deg 90-deg</p>		Degrees Vertical	Candela	Zone	Lumens	% Fixture	Average Candela Degrees	Average 0° Luminance
Housing 4B15D010			0	684	0-30	509	34.2	45	67383
Module EC4B10208035			5	678	0-40	811	54.5		
Trim 4LBSCS3MMS			15	641					
Lumens 1489			25	574					
Efficacy 104.1 Lm/W			35	484	0-60	1326	89.1	55	55160
SC 1.16			45	379	0-90	1489	100	65	37283
UGR 22			55	251					
			65	125				90-180	0
			75	32	0-180	1489	100	85	1444
			85	1					
			90	0					

MEDIUM	CANDLEPOWER DISTRIBUTION	CONE OF LIGHT	CANDELA TABLE	ZONAL LUMEN SUMMARY	LUMINANCE				
Test Number P411912	 <p>0-deg 45-deg 90-deg</p>		Degrees Vertical	Candela	Zone	Lumens	% Fixture	Average Candela Degrees	Average 0° Luminance
Housing 4B15D010			0	684	0-30	509	34.2	45	81533
Module EC4B10208035			5	678	0-40	811	54.5		
Trim 4LBSSQS3MMS			15	641					
Lumens 1489			25	574					
Efficacy 104.1 Lm/W			35	484	0-60	1326	89.1	55	66744
SC 1.16			45	379	0-90	1489	100	65	45112
UGR 22			55	251					
			65	125					
			75	32	90-180	0	0	75	18651
			85	1					
			90	0	0-180	1489	100	85	1747



### CCT Multipliers – 90CRI

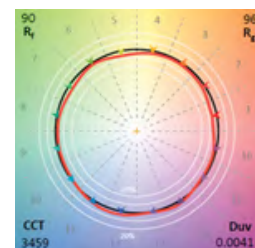
2700K	3000K	3500K	4000K
0.95	0.99	1.00	1.00

Multipliers for relative lumen values with other color temperatures.

Note: Refer to IES files for more product data.

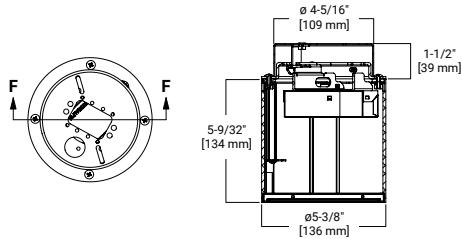
### Color Metrics - TM-30-15 & CRI/CIE

TM-30-15	Rf = 90
	Rg = 96
CRI/CIE	Ra = 91.8
	R9 = 55.8

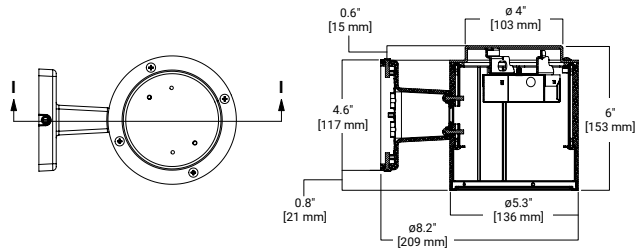


## Dimensional and Mounting Details

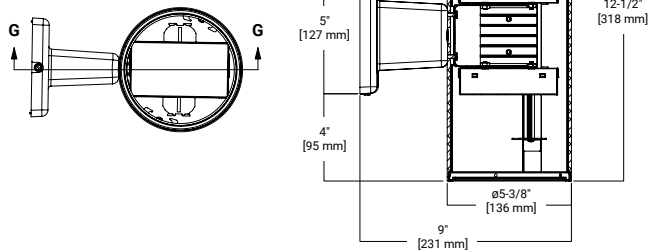
4IN ROUND CYLINDER  
SHALLOW SURFACE MOUNT



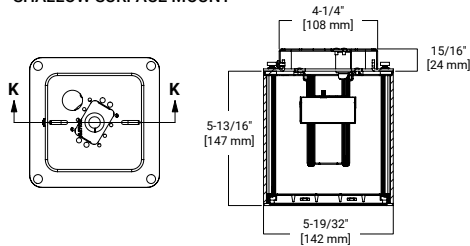
4IN ROUND CYLINDER  
SHALLOW WALL MOUNT



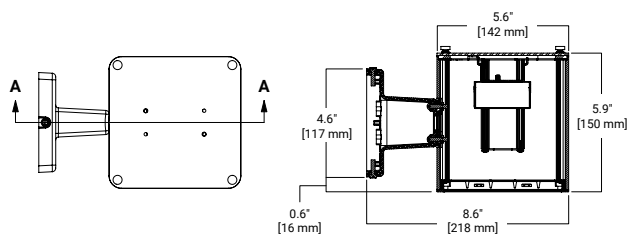
4IN ROUND CYLINDER  
SHALLOW UP DOWN



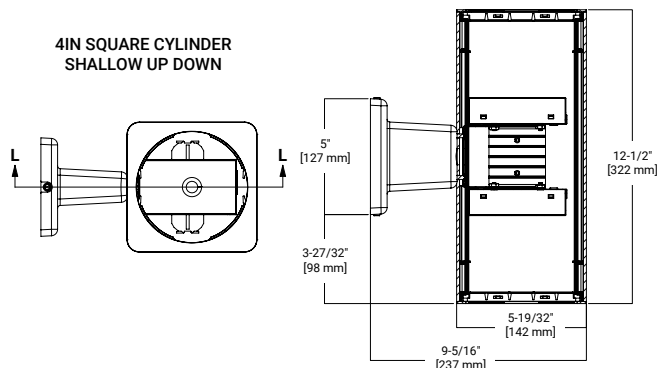
4IN SQUARE CYLINDER  
SHALLOW SURFACE MOUNT



4IN SQUARE CYLINDER  
SHALLOW WALL MOUNT

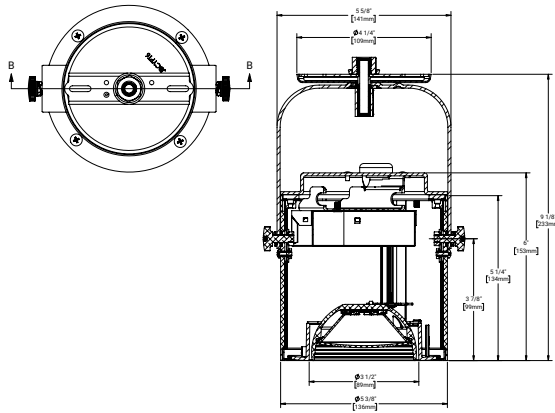


4IN SQUARE CYLINDER  
SHALLOW UP DOWN

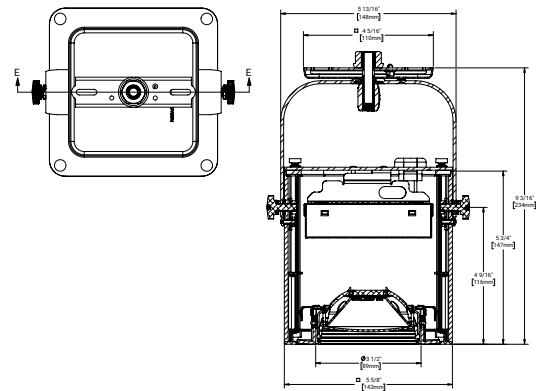


## Dimensional and Mounting Details

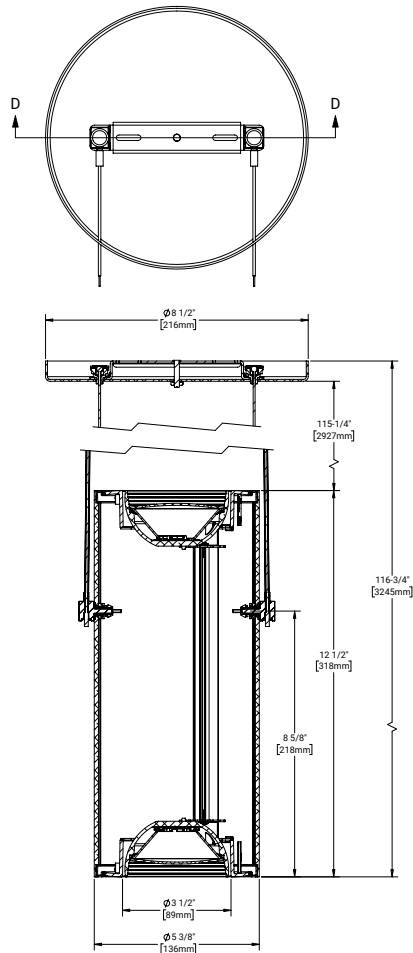
4IN ROUND CYLINDER  
SHALLOW YOKE MOUNT



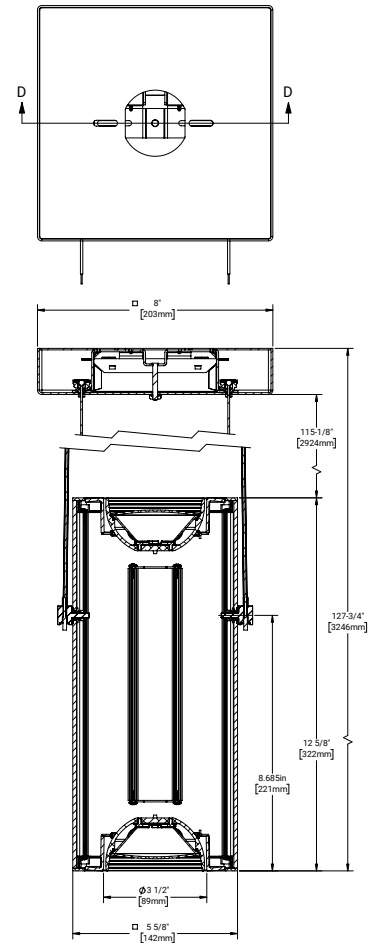
4IN SQUARE CYLINDER  
SHALLOW YOKE MOUNT



4IN ROUND CYLINDER SHALLOW  
POWER CORD UP DOWN PENDANT



4IN SQUARE CYLINDER SHALLOW  
POWER CORD UP DOWN PENDANT DRIVER





## Connected Systems



## WaveLinX Lite - WTK Tilemount Sensor

- Intuitive Android™ or Apple® iOS® app for basic system code compliant set up and configuration via Bluetooth
- Up to 28 unique areas per project site (WaveLinX Lite Bluetooth network)
- Up to 50 devices for an area, any one of 16 control zones, up to 6 occupancy sets, and custom lighting scenes
- Automatic occupancy or vacancy, sensor sensitivity, daylight dimming, etc. configurable through the app
- Refer to the WaveLinX system specifications for details



Device Security



Manual Dimmer



Occupancy Sensor



Daylighting Control



Manually Switched ON/OFF



Tuning Control

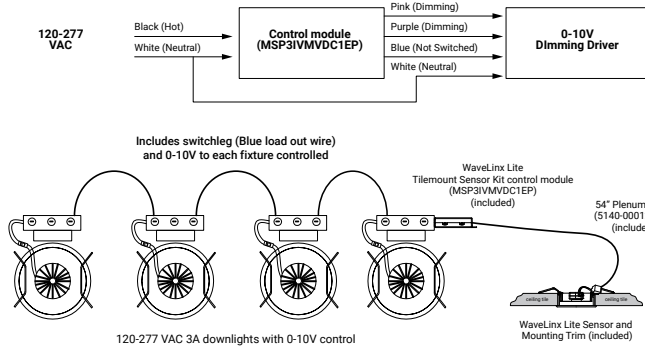


Lumen Maintenance Control

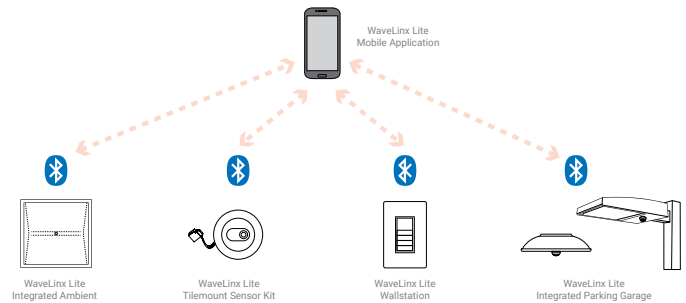


Scenes

## WaveLinX Lite WTK Tilemount Wiring Diagram



## WaveLinX Lite Bluetooth Enabled System



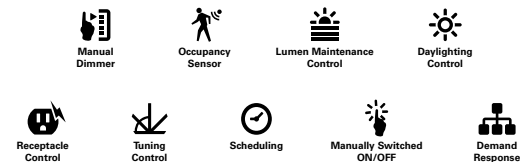
## WaveLinX Wireless – WTA Tilemount Sensor



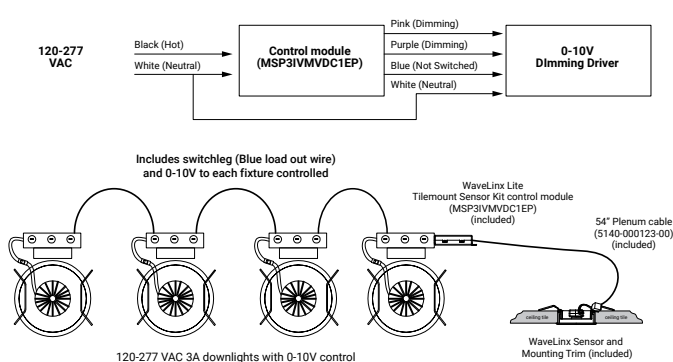
- WaveLinX Wireless functionality configures zones and customizes settings from one secure mobile app
- Automatic code commissioning that meets the strictest codes
- Fixtures and sensors integrate with Wireless Area Controller, Wall Stations, and Control Devices
- Stand-Alone Offices or Entire Building Network Installations



## WaveLinX mobile app settings



## WaveLinX Lite WTA Tilemount Wiring Diagram



## WaveLinX Wireless Trellix Building Management Integration

