

A modern office interior featuring a large wooden wall with a silver logo, a white reception desk, and a glass-walled meeting room. The ceiling is equipped with a track of six white cylindrical LED track luminaires. The floor is made of dark wood planks. A potted plant is visible on the right side of the frame.

# HALO<sup>®</sup>

809 XACT Beam  
LED Track Luminaires

## 809 XACT Beam LED



The HALO 809 XACT Beam LED Track series sets a new bar in reducing spill light - A perfect solution for applications that demand high contrast ratios

The HALO 809 XACT BEAM LED Track Series offers a high degree of collimation through the optical axis, increasing the center beam intensity while reducing the field (spill) light. The 809 XACT Beam series is offered in 2 different lumen packages with an option of 5 different optical configurations.

## 809 XACT Beam LED



## Basic Beam LED



809 XACT Beam LED



The HALO 809 XACT Beam LED family provides superior performance offering precision beam control and high center beam candle power while minimizing the field angle.

The HALO 809 XACT Beam LED series takes track lighting to a whole new level of performance. The 809-track head is manufactured with a durable, die cast aluminum construction with a minimalist center stem, available in matte black, matte white and matte metallic silver finishes.

This 3" diameter series offers 2 lumen packages of 1600 and 2500 lumens with efficacies higher than 107 LPW. The series offers five superior performing XACT beam optics with beam spreads from a 12° Spot to a 36° Wide Flood and exceptional color rendering with 90 CRI and 4 different color temperatures: 2700K, 3000K, 3500K and 4000K.

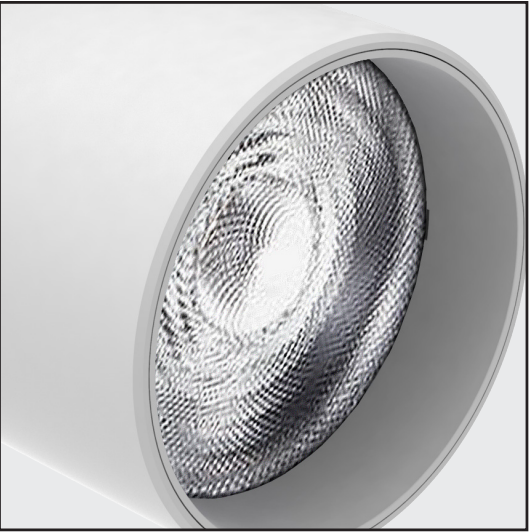
809 XACT Beam LED



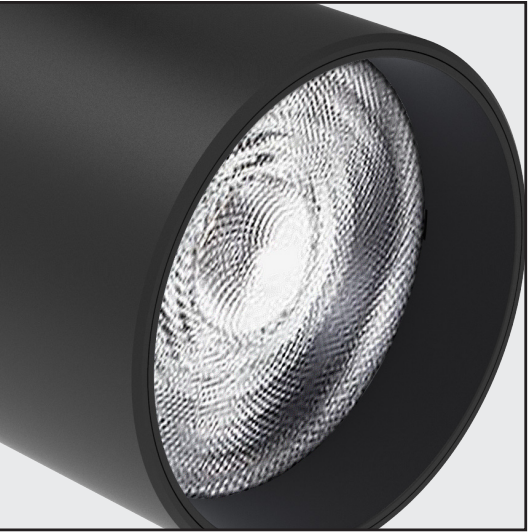
1600 Lumens  
2500 Lumens

Finishes

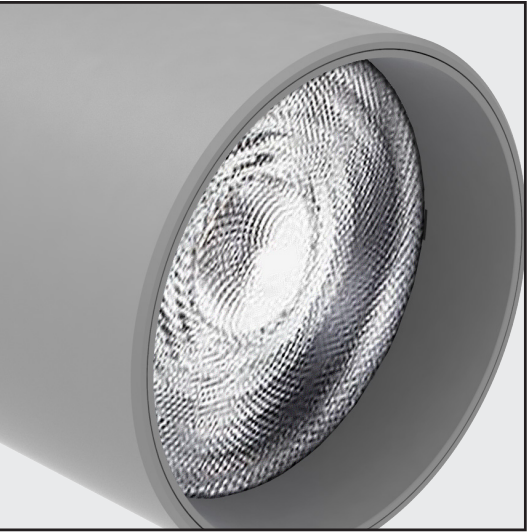
Matte White (P)



Matte Black (MB)



Matte Metallic Silver (SL)



# 809 XACT Beam LED

## Technical specifications

### High Performance features (XBA - Xact Beam Optics)

- Offers Spot, wide spot, narrow flood, flood, and wide flood optics ( 12 Deg, 18 Deg, 24 Deg, 30 Deg, 36 Deg beam angles)
- Provides a high degree of collimation along the optical axis with low brightness in the 809 cylinder aperture that limits spill light loss on the cylinder wall
- Delivers high center beam candlepower

### Installer Friendly features

- Tool-less adjustment to pivot 100° vertically and 340°horizontally without adjusting track position.
- Easy to install barndoor shutters

### Features

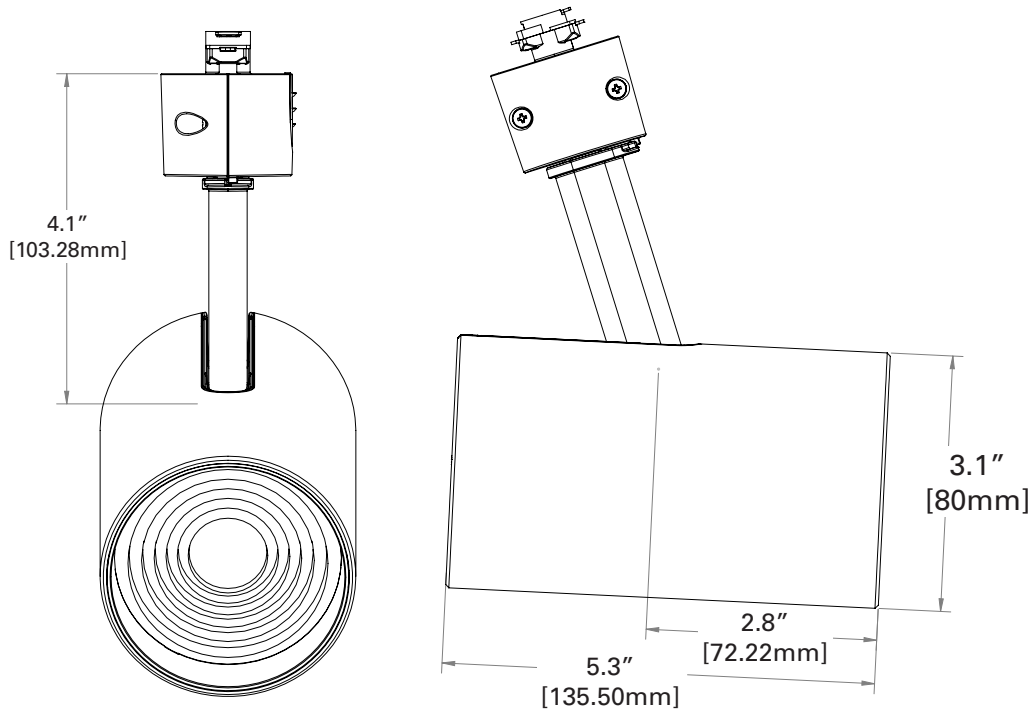
- 3" Aperture, 5" Length in a compact mid-stem mount cylinder
- 1600 lumen & 2500 lumen
- 90 CRI - 2700K, 3000K, 3500K, 4000K
- XBA - Xact Beam Advanced – High Performance Optics: 12 Deg, 18 Deg, 24 Deg, 30 Deg, 36 Deg
- Matte White, Matte Black, Matte Metallic Silver finishes
- Halo Power Trac, Lazer, Halo HTEK, Juno, & Lightolier connectors
- 120V Phase-cut LE - leading edge and TE - trailing edge dimming to 5%
- 277V Non-dim operation with Halo HTEK track and L2G connector only

## Compliance and approvals



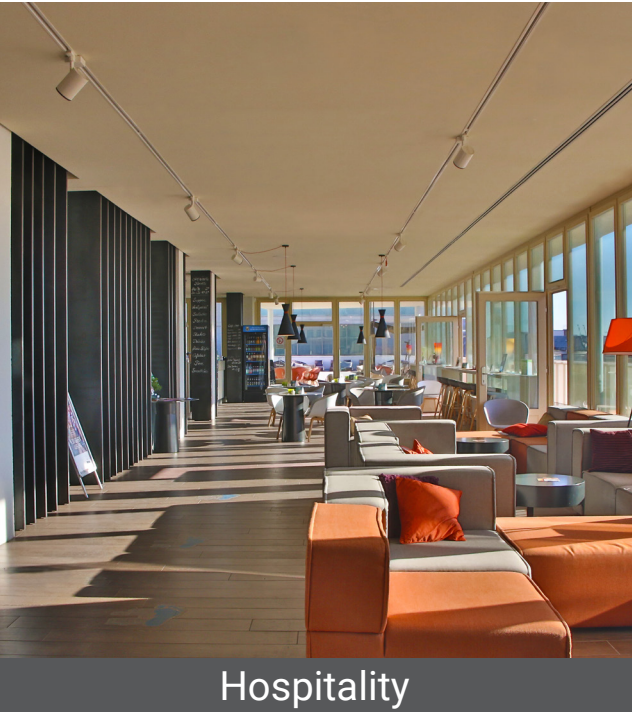
Can be used to comply with California Title 24 High Efficacy requirements. Certified to California Title 20 Appliance Efficiency Database.

## Dimensional details



## Applications

With options in two lumen outputs, five beam distributions, and exceptional phase-cut 120V dimming to 5%, the HALO 809 XACT Beam LED can achieve a variety of contrast ratios in lighting environments. From drawing attention to featured products to creating premium ambiance in any setting, the HALO 809 High Performance is the right lighting tool to accent multiple indoor environments.



809 XACT Beam LED



809 XACT Beam LED

Order Information

SAMPLE ORDER NUMBER: **L80916SP930P**

Track	Size	Output	Optic	CRI & CCT	Finish	Voltage
L=Halo Power Trac & Lazer Track L2G=Halo TEK/HTEK LJ=Juno Track <sup>(1)</sup> LL=Lightolier <sup>(2)</sup>	809	16=1600 lumen 25=2500 lumen	SP=12 Degree Spot WS=18 Degree Wide Spot NF=24 Degree Narrow Flood FL=30 Degree Flood WF=36 Degree Wide Flood	927=2700K / 90 CRI 930=3000K / 90 CRI 935=3500K / 90 CRI 940=4000K / 90 CRI	MB=Matte Black P=Matte White SL=Matte Metallic Silver	Blank=120V 277=277V <sup>(3)</sup>
<b>Notes</b> (1) Juno® T single circuit and 2-circuit track contact. Juno® is a registered trademark of Juno® Lighting. (2) Lightolier® Lylespan 6000 single circuit and 2 circuit track contact. Lightolier® is a registered trademark of Philips Lighting.	<b>Notes</b>	<b>Notes</b>	<b>Notes</b>	<b>Notes</b>	<b>Notes</b>	<b>Notes</b> (3) 277V is only available for Halo HTEK track with non-dim operation. L2G track connector must be used

Accessories

Monopoint Canopy Adapter



**Description**  
Mounts permanently to an outlet box. L973-4 1/2" sq allows a lampholder to a 500W maximum to be converted to a canopy installation.



LZR209- 5" diameter, Mounts directly to junction box, 500W maximum.  
**L973PN** = Halo Power Trac square canopy adapter, matte white  
**L973MB** = Halo Power Trac square canopy adapter, matte black  
**LZR209P** = Lazer Track round monopoint, matte white  
**LZR209MB** = Lazer Track round monopoint, matte black

**Lighting Product Lines**

Ametrix  
AtLite  
Corelite  
Ephesus  
Fail-Safe  
Halo  
Halo Commercial  
Invue  
io  
Iris  
Lumark  
Lumière  
McGraw-Edison  
Metalux  
MWS  
Neo-Ray  
Portfolio  
RSA  
Shaper  
Streetworks  
Sure-Lites

**Controls Product Lines**

Fifth Light Technology  
Greengate  
iLight (International Only)  
iLumin  
Zero 88

**Connected Lighting Systems**

Distributed Low-Voltage Power  
HALO Home  
iLumin Plus  
Enlighted  
WaveLinx  
Trellix



**Cooper Lighting Solutions**  
1121 Highway 74 South  
Peachtree City, GA 30269  
P: 770-486-4800  
[www.cooperlighting.com](http://www.cooperlighting.com)

Canada Sales  
5925 McLaughlin Road  
Mississauga, Ontario L5R 1B8  
P: 905-501-3000  
F: 905-501-3172

© 2022 Cooper Lighting Solutions  
All Rights Reserved  
Printed in USA  
Publication No. BR51851022EN  
July 13, 2022 4:20 PM

Cooper Lighting Solutions is a registered trademark.

All other trademarks are property of their respective owners.

Product availability, specifications, and compliances are subject to change without notice.