



HALO[®] BUILDER PROGRAM

HALO Builder
Resource Guide



Table of Contents

- ④ Retrofits
- ⑧ Surface Mount
- ⑫ Canless
- ⑳ Specialty



Scan or Click
Learn More!

HALO
Builder
Program
Webpage



The **HALO®** Builder Program is a complete lighting solution, designed to provide the latest technology all while saving single-family and multi-family builders money on industry-leading products. Free membership provides various options to suit your needs. These special offerings enable builders to provide a superior lighting package in their homes resulting in faster sales conversion and increased buyer satisfaction. Scan or click the QR code above for more information.

INCENTIVES



Free
To Apply



Stock and
Delivery
Support



Financial
Benefits



New
Product
Previews



Model Home
Program

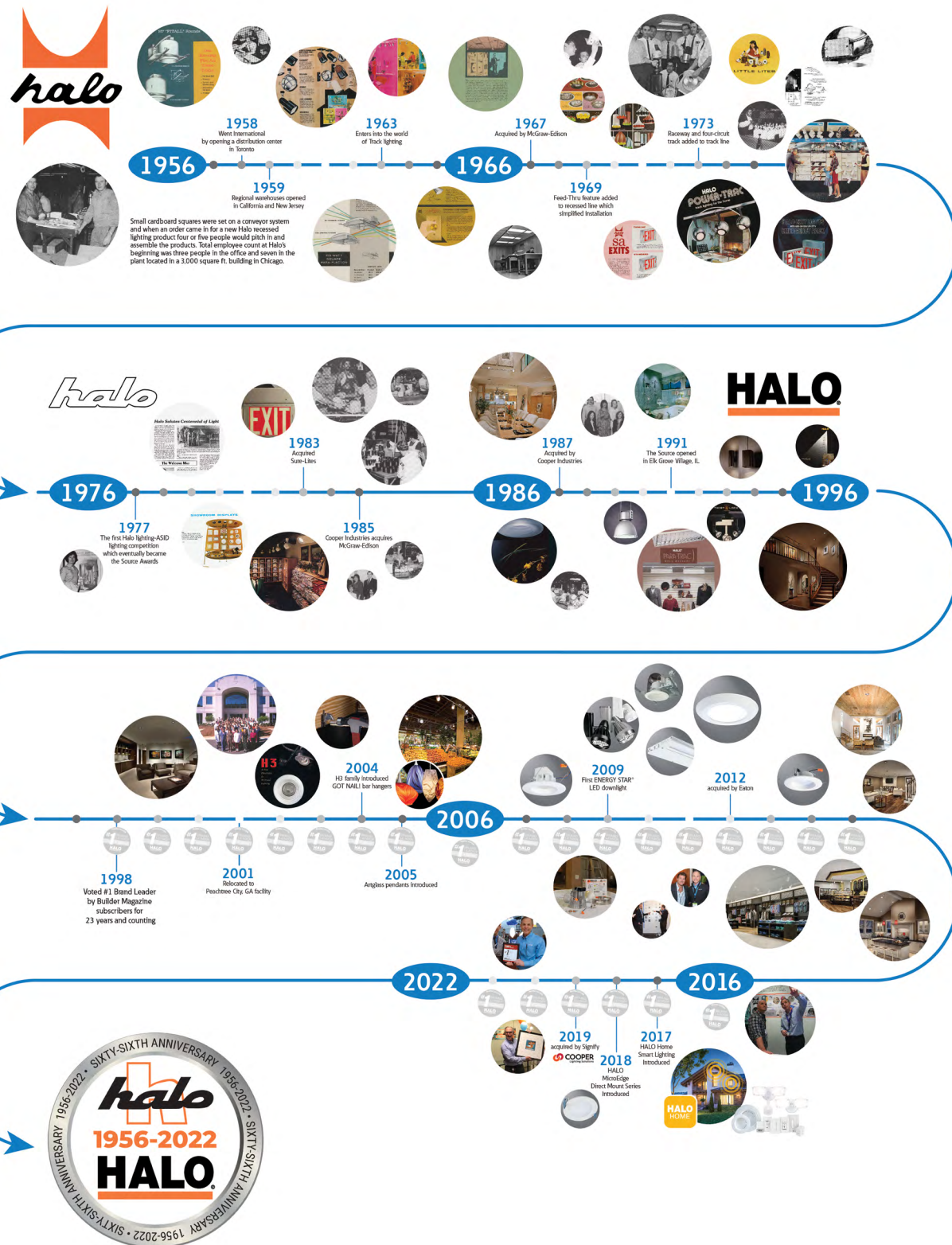


Invites to
Member-Only
Events

HALO®

For over 65 years, **HALO** is the most trusted brand of builders for innovative lighting. We provide the most comprehensive line of products to meet your needs with easy and quick installation to get off the job faster while reducing material and labor costs.

HALO has been chosen as Builder Magazine's #1 lighting brand for 24 consecutive years, further reinforcing **HALO's** longstanding industry leadership, product quality, and innovation.



Retrofit

For over 65 years HALO has been a leader in downlighting and offers a wide variety of innovative high quality retrofit solutions that fit in existing can housings or new construction installations.



Retrofit Installation



LT

Retrofit Module Downlight



LT4



LT56



| | |
|----------------------|--------------------------------------------|
| Size / Shape | 4" & 5"/6" Round, Smooth Splay or Baffle |
| Lumens (Max.) | 1200 |
| CRI | 90 |
| CCT | 2700K, 3000K, 3500K 3000K, 4000K, 5000K |
| Input Voltage | 120V |
| Control | Field Selectable 3 CCT, Phase Cut |

LA

LED Adjustable



LA4



LA56



| | |
|----------------------|-----------------------------------|
| Size / Shape | 4" & 5"/6" Round |
| Lumens (Max.) | 600 |
| CRI | 90 |
| CCT | NA |
| Input Voltage | 120V |
| Control | Field Selectable 3 CCT, Phase Cut |

RL

Retrofit Module Downlight



RL3



RL4



RL56



| | |
|----------------------|--------------------------------------------|
| Size / Shape | 3", 4" & 5"/6" Round, Baffle |
| Lumens (Max.) | 1200 |
| CRI | 90 |
| CCT | 2700K / 3000K / 3500K / 4000K / 5000K |
| Input Voltage | 120V or 120-277V |
| Control | Field Selectable 5 CCT, Phase Cut or 0-10V |

RL Series Designer Trims

Splay available for 3", 4" and 6" RL modules (sold separate)

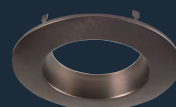
Baffle available for 4" and 6" RL modules (sold separate)



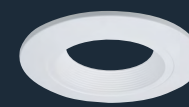
**RL3TRMWH
RL4TRMWH
RL6TRMWH**
White (Paintable)



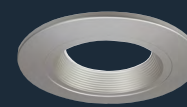
**RL3TRMSN
RL4TRMSN
RL6TRMSN**
Satin Nickel



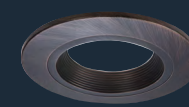
**RL3TRMTBZ
RL4TRMTBZ
RL6TRMTBZ**
Tuscan Bronze



**RL4TRMWHB
RL6TRMWHB**
White (Paintable), Baffle



**RL4TRMSNB
RL6TRMSNB**
Satin Nickel,
Baffle



**RL4TRMTBZB
RL6TRMTBZB**
Tuscan Bronze,
Baffle

RLD

LED Deep Baffle Retrofit Module



RLD4



RLD6



| | |
|----------------------|----------------------------------------------|
| Size / Shape | 4" & 6" Round, Coilex Baffle (White & Black) |
| Lumens (Max.) | 600 |
| CRI | 90 |
| CCT | 3000K |
| Input Voltage | 120V |
| Control | Phase Cut |

Interchangeable Baffle

Available for both 4" and 6" RLD modules (both colors included)



RA

LED Adjustable Retrofit Module



RA3



RA4



RA56



| | |
|----------------------|---------------------------------------|
| Size / Shape | 3", 4" & 5"/6" Round |
| Lumens (Max.) | 600 |
| CRI | 90 |
| CCT | 2700K / 3000K / 3500K / 4000K / 5000K |
| Input Voltage | 120V |
| Control | Field Selectable 5 CCT, Phase Cut |

RSQ

Square Retrofit Module



RSQ4



RSQ5



RSQ6



| | |
|----------------------|--------------------------------------------|
| Size / Shape | 4", 5" & 6" Square, Baffle |
| Lumens (Max.) | 800 |
| CRI | 90 |
| CCT | 2700K / 3000K / 3500K / 4000K / 5000K |
| Input Voltage | 120V or 120-277V |
| Control | Field Selectable 5 CCT, Phase Cut or 0-10V |

Designer Trims

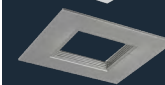
Available for 4", 5" and 6" RSQ modules (sold separate)



RSQ4TRMMW 4" square, White flange & splay (paintable)

RSQ4TRMSNB 4" square, Satin Nickel flange & baffle

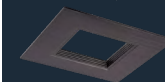
RSQ4TRMTBZB 4" square, Tuscan Bronze flange & baffle



RSQ5TRMMW 5" square, White flange & splay (paintable)

RSQ5TRMSNB 5" square, Satin Nickel flange & baffle

RSQ5TRMTBZB 5" square, Tuscan Bronze flange & baffle



RSQ6TRMMW 6" square, White flange & splay (paintable)

RSQ6TRMSNB 6" square, Satin Nickel flange & baffle

RSQ6TRMTBZB 6" square, Tuscan Bronze flange & baffle

Housings



E Series

4" / 5" / 6" New Construction and Remodel Housings

- Compact and economical construction
- Integral thermal protector guards against over-lamping
- Compatible with 120V HALO LED modules
- Airtight and suitable for direct contact with insulation



Ultra Shallow

4" New Construction and Remodel Housings

- Ultra-shallow housing, Compatible with HALO 4" LED modules/trim
- Suitable for 2x4 framing or shallow plenum construction
- IC rated to be in direct contact with insulation
- Housing adjusts for 1/2" to 1-1/4" ceiling thickness
- Single wall deep drawn aluminum housing painted matte black
- Use with HALO LT4, RL4, RA4, SMD4, SLD4 LED trims and ML4 LED system



**FIRE
RATED**  **UP TO
2 HOURS**

Fire Rated

4" / 5" / 6" New Construction Housings

- Prevents the passage of flames and toxic gases into ceiling plenums
- Fire Rated for up to 2 hours in accordance to UL 263
- Compatible with 120V HALO LED modules
- Suitable for multi-family and mixed-use applications
- Airtight and suitable for direct contact with insulation

Patented Features



Pre-installed tool-less strain reliefs eliminate need for additional NM cable connectors.



Pre-installed push-in wiring connectors.



Pre-installed gasket. No caulk required. ASTM E283 Compliant.



Hinged cover on junction box for easy access and secure retention. Box repositionable 90°.



Precisely aligned pre-installed nail with mini leveling foot.



Inverted "q" interlocking channel for rigidity and stability. Pass-N-Thru bar hangers allow tool-less shortening.

Surface Mount

HALO offers low-profile, high-performing, surface-mount luminaires that install from below the ceiling with no plates or clips. Our surface mount fixtures come in a variety of shapes and sizes and sit on top of the ceiling.



Junction Box Installation



HLC

Low-Profile LED Downlight



HLC4



HLC6



HLC9

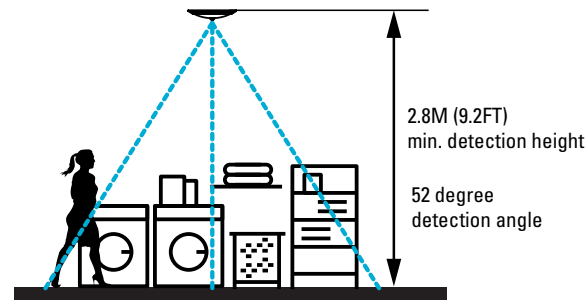


HLCMS9
w/motion sensor

| | |
|---------------|-------------------|
| Size / Shape | 4", 6" & 9" Round |
| Lumens (Max.) | 1200 |
| CRI | 90 |
| CCT | 3000K or 4000K |
| Input Voltage | 120V |
| Control | Phase Cut |

Motion Sensor Benefits:

- **Convenience / Safety** lights come on as you enter the space
- **Energy saving** reduces the amount of energy used
- **Cost savings** reduces energy consumption
- **Sleek design**



BLD

Backlit LED Downlight



BLD4

BLD6



| | |
|----------------------|---------------------------------------|
| Size / Shape | 4" & 6" Round |
| Lumens (Max.) | 812 |
| CRI | 90 |
| CCT | 2700K / 3000K / 3500K / 4000K / 5000K |
| Input Voltage | 120V |
| Control | Field Selectable 5 CCT, Phase Cut |

CLD

Low-Profile LED Downlight



CLD7



| | |
|----------------------|-----------------------------------|
| Size / Shape | 7" Round |
| Lumens (Max.) | 810 |
| CRI | 90 |
| CCT | 3000K / 4000K / 5000K |
| Input Voltage | 120V |
| Control | Field Selectable 3 CCT, Phase Cut |

SLD

Retrofit Module Downlight









SLD4

SLD6



| | |
|----------------------|--------------------------------------------|
| Size / Shape | 4" & 6" Round |
| Lumens (Max.) | 1215 |
| CRI | 90 |
| CCT | 2700K / 3000K / 3500K / 4000K / 5000K |
| Input Voltage | 120V or 120-277V |
| Control | Field Selectable 5 CCT, Phase Cut or 0-10V |

Compatible Junction Boxes for Surface Modules*

| | | | | | |
|-------------------------------------------------------------------------------------|-------------------------------------------------------------------------------------|-------------------------------------------------------------------------------------|---------------------------------------------------------------------------------------|---------------------------------------------------------------------------------------|---------------------------------------------------------------------------------------|
|  |  |  |  |  |  |
| Octagon steel light fixture / fan box | Square steel deep box | Round new work fixture box (plastic) | Round new work ceiling box (plastic) | Round old work fixture box (plastic) | Round new work fixture box (plastic) with bar hanger |
| 4" x 4" x 2-1/8" | 4" x 4" x 1-1/2" | 4" diameter x 2-3/16" | 3-1/2" diameter x 2-3/4" | 4" diameter x 2-3/16" | 4" diameter x 2-3/16" |

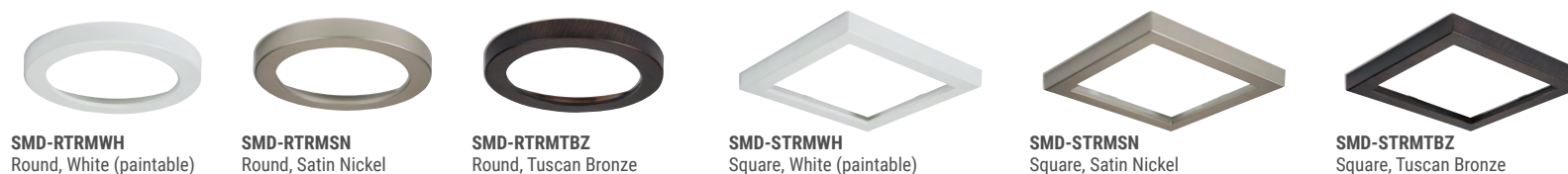
SMD





Round & Square LED Downlight



| | |
|----------------------|--------------------------------------------|
| Size / Shape | 4", 6", 12" & 14" Round & Square |
| Lumens (Max.) | 2000 |
| CRI | 90 |
| CCT | 2700K / 3000K / 3500K / 4000K / 5000K |
| Input Voltage | 120V or 120-277V |
| Control | Field Selectable 5 CCT, Phase Cut or 0-10V |

Designer Trims Available for 4", 6", 12" and 14" SMD modules (sold separate)



| | | | |
|-------------------------------------------------------------------------------------|-------------------------------------------------------------------------------------|-------------------------------------------------------------------------------------|---------------------------------------------------------------------------------------|
|  |  |  |  |
| Round surface mount | Round** ceiling pan | TP316*** Eaton's Crouse-Hinds junction box for non-metallic cable | TP317*** Eaton's Crouse-Hinds junction box for metal clad cable |

4" diameter x 1-1/2"
SMD4 only

4" diameter x 13/16"

4" x 2-1/8"

4" x 2-1/8"

**This is a representative list of compatible junction boxes only. Information contained in this literature about other manufacturers' products is from published information made available by the manufacturer and is deemed to be reliable, but has not been verified. Cooper Lighting Solutions and HALO make no specific recommendation on product selection and there are no warranties of performance or compatibility implied. Installer must determine that site conditions are suitable to allow proper installation of the mounting bracket in the box.*

**** Compatible with HLC, BLD and CLD surface products.**

****SMD modules that deliver over 1200 lumens require junction boxes 4" x 2 -1/8" deep.**

Canless

HALO has the broadest selection of canless products that save you time, money and keep your projects on schedule. Canless products do not need a housing and can be used in new construction or remodel applications. Whether you want slim, adjustable, or regressed, **HALO's** got your covered.



Canless Installation



**Install
Slim.**



**Canless, low-profile
direct mounts.**

**Install
Classic.**



**Canless direct mounts
that mimic the look of
traditional recessed trim.**

**Install
Adjustable.**



**Adjustable solutions to
shine light exactly
where you need it.**

**Install
Quick.**



**Canless direct mounts
with QuickLink
technology.**

QuickLink
Low Voltage System

HLB Lite

Ultra-thin LED Smooth Lens Downlight



HLBSL4



HLBSL6



| Size / Shape | 4" & 6" Round |
|---------------|-------------------------------------------------------|
| Canless Type | Slim |
| Lumens (Max.) | 1000 |
| CRI | 90 |
| CCT | 2700/3000/3500K 3000/4000/5000K 4000/5000/6000K |
| Input Voltage | 120V |
| Control | Field Selectable 3 CCT, Phase Cut |

HLB

Ultra-thin LED Lens Downlight



HLB3
3" Round Downlight,
prismatic lens



HLB4
4" Round Downlight,
prismatic lens



HLB6
6" Round Downlight,
prismatic lens



HLB8
8" Round Downlight,
prismatic lens



HLB3S
3" Square Downlight,
prismatic lens



HLB4S
4" Square Downlight,
prismatic lens



HLB6S
6" Square Downlight,
prismatic lens



HLB12
12" Round Downlight,
prismatic lens

| Size / Shape | 3", 4", & 6" Round & Square 8" & 12" Round |
|---------------|-----------------------------------------------|
| Canless Type | Slim |
| Lumens (Max.) | 2400 |
| CRI | 90 |
| CCT | 2700K / 3000K / 3500K / 4000K / 5000K |
| Input Voltage | 120V or 120-277V |
| Control | Field Selectable 5 CCT, Phase Cut or 0-10V |

HLB Series Designer Trims Available for both 3", 4" and 6" HLB & HLB Lite modules (sold separate)



HLB3RTRMMW
HLB4RTRMMW
HLB6RTRMMW
Round,
White (paintable)



HLB3RTRMSN
HLB4RTRMSN
HLB6RTRMSN
round,
satin nickel



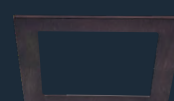
HLB3RTRMTBZ
HLB4RTRMTBZ
HLB6RTRMTBZ
round,
tuscan bronze



HLB3STRMMW
HLB4STRMMW
HLB6STRMMW
square,
white (paintable)



HLB3STRMSN
HLB4STRMSN
HLB6STRMSN
square,
satin nickel



HLB3STRMTBZ
HLB4STRMTBZ
HLB6STRMTBZ
square,
tuscan bronze

LT-DM

LED Downlight



LT3-DM



LT4-DM



LT6-DM



| | |
|----------------------|------------------------------------|
| Size / Shape | 3", 4" & 6" Round |
| Canless Type | Regressed |
| Lumens (Max.) | 800 |
| CRI | 90 |
| CCT | 2700/3000/3500K 3000/4000/5000K |
| Input Voltage | 120V |
| Control | Field Selectable 3 CCT, Phase Cut |

RL-DM

LED Downlight



RL4-DM



RL6-DM



| | |
|----------------------|-----------------------------------|
| Size / Shape | 4" & 6" Round |
| Canless Type | Regressed |
| Lumens (Max.) | 600 |
| CRI | 90 |
| CCT | 2700/3000/3500K/4000K/5000K |
| Input Voltage | 120V |
| Control | Field Selectable 3 CCT, Phase Cut |

Designer Trims available for RL4-DM (sold separate).
[See RL Series page 5 for details.](#)

LCR

Commercial / Multi-Family LED Downlight



LCR2



LCR4



LCR6



LCR8



| | |
|----------------------|-------------------------------|
| Size / Shape | 2", 4", 6" & 8" Round |
| Canless Type | Regressed |
| Lumens (Max.) | 8000 |
| CRI | 90 |
| CCT | 2700/3000/3500K/4000K/5000K |
| Input Voltage | 120V-277V |
| Control | Field Selectable 5 CCT, 0-10V |

RA-DM

LED Adjustable - 35° tilt, 360° rotation



RA4-DM



RA6-DM



| | |
|----------------------|-----------------------------------|
| Size / Shape | 4" & 6" Round |
| Canless Type | Adjustable |
| Lumens (Max.) | 600 |
| CRI | 90 |
| CCT | 2700/3000/3500K/4000K/5000K |
| Input Voltage | 120V |
| Control | Field Selectable 5 CCT, Phase Cut |

HLA

LED Adjustable - 30° tilt, 360° rotation



HLA3



HLA3S



HLA4



HLA4S



| | |
|----------------------|-----------------------------------|
| Size / Shape | 3" & 4" Round & Square |
| Canless Type | Adjustable |
| Lumens (Max.) | 600 |
| CRI | 90 |
| CCT | 2700/3000/3500K/4000K/5000K |
| Input Voltage | 120V |
| Control | Field Selectable 5 CCT, Phase Cut |

HLA Series Designer Trims *Available for both 3" and 4" HLA modules (sold separate)*



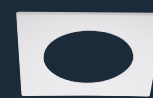
HLB3RTRMMW
HLB4RTRMMW
round, white (paintable)



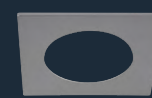
HLB3RTRMSN
HLB4RTRMSN
round, satin nickel



HLB3RTRMTBZ
HLB4RTRMTBZ
round, tuscan bronze



HLB3STRMMW
HLB4STRMMW
round, white (paintable)



HLB3STRMSN
HLB4STRMSN
round, satin nickel



HLB3STRMTBZ
HLB4STRMTBZ
round, tuscan bronze

Install Fast

Lighting solutions that reduce installation time, costs and headaches.

1



Cut hole in ceiling.

2



Connect wiring to junction box.

3



Select color temp or lumen if available.

4



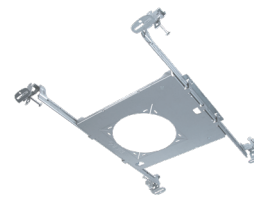
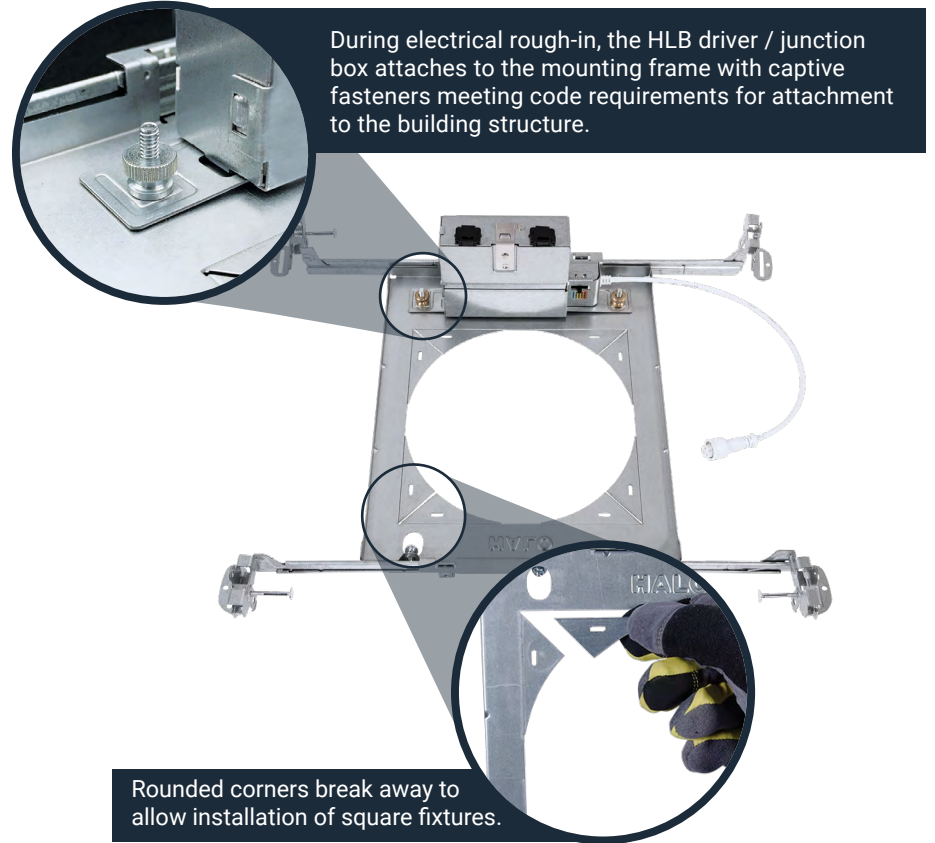
Connect LED module to driver and install into ceiling.

5

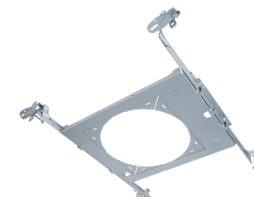


Push module up into the ceiling.

Use the mounting frame at rough-in to reserve the ceiling location and provide routing guidance for the drywall contractor.



HL4RSMF
4" round and square mounting frame



HL6RSMF
6" round and square mounting frame

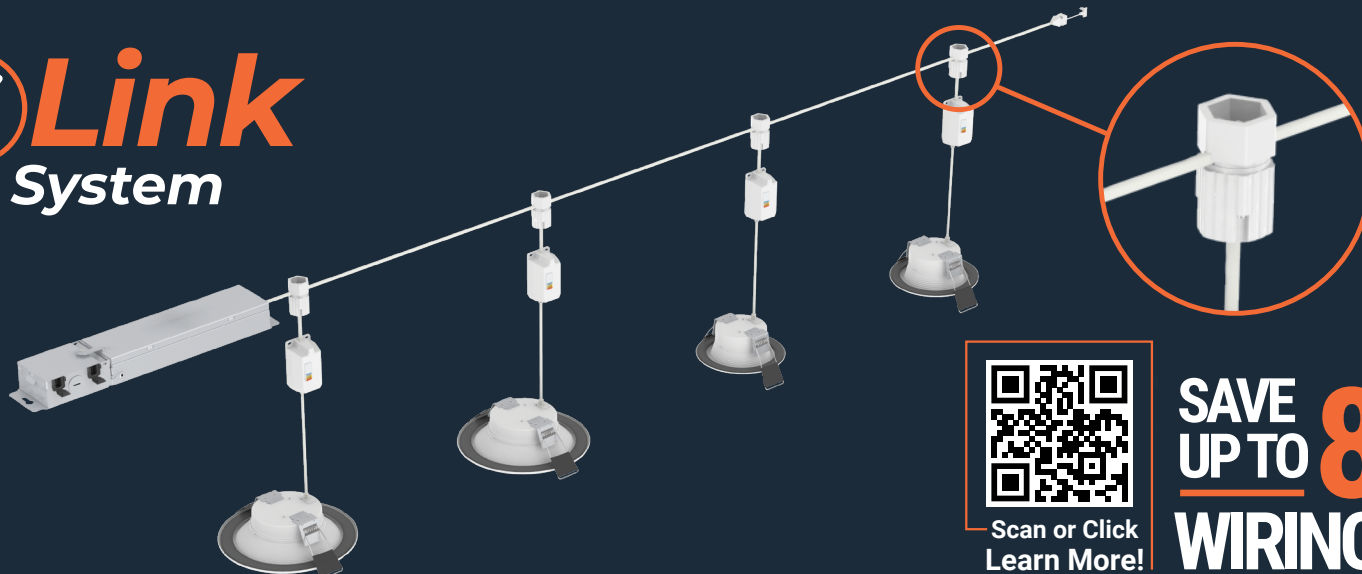


HL8RSMF
8" round and square mounting frame

QuickLink[⚡]

Low Voltage System

NO HOUSING NEEDED!



Scan or Click
Learn More!

SAVE UP TO 85%
WIRING TIME

Canless Slim



HLBQL4069FS1E-4PK

Phase Cut - 4 Pack Kit w/driver

HLBQL4069FS1E*

4" Round Downlight, prismatic lens



HLBQL6099FS1E-4PK

Phase Cut - 4 Pack Kit w/driver

HLBQL6099FS1E*

6" Round Downlight, prismatic lens

HLBQL4069FSE010-6PK

0-10V - 6 Pack Kit w/driver

HLBQL4069FSE010*

4" Round Downlight, prismatic lens

HLBQL6099FSE010-6PK

0-10V - 6 Pack Kit w/driver

HLBQL6099FSE010*

6" Round Downlight, prismatic lens

Canless Regressed



LTQL4069S1EDM-4PK

Phase Cut - 4 Pack Kit w/driver

LTQL4069S1EDM*

4" Round Downlight, smooth splay



LTQL6069S1EDM-4PK

Phase Cut - 4 Pack Kit w/driver

LTQL6069S1EDM*

6" Round Downlight, smooth splay



RLQL4069SE010DM-8PK

0-10V - 8 Pack Kit w/driver

RLQL4069SE010DM*

4" Round Downlight, baffle trim



RLQL6069SE010DM-8PK

0-10V - 8 Pack Kit w/driver

RLQL6069SE010DM*

6" Round Downlight, baffle trim

* Driver not included. Only compatible with the HALO QuickLink system.

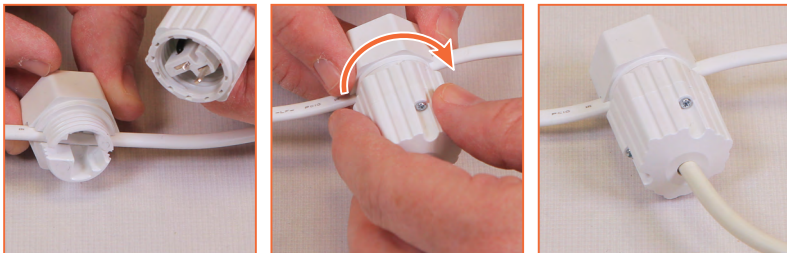
Installing downlights has never been faster.

QuickLink delivers the fastest downlighting installation HALO has to offer. Installers can power multiple QuickLink lights on the single remote power supply, making it easy and efficient to install energy-saving lighting. Each fixture attaches to the low voltage cable in seconds with QuickLink Twist Connectors. Start with a QuickLink Kit which includes the remote power supply, a low voltage cable, and canless downlights. Then mix and match individual fixtures to complete the project.

1 POWER SUPPLY & MULTIPLE FIXTURES



With QuickLink Twist Connectors, each fixture attaches to the low voltage cable in seconds. The flexibility of the system allows the user to mix and match the compatible HALO QuickLink canless fixtures onto the same low voltage cable.



Scan or Click
Learn More!

QuickLink installation video



The SeleCCTable™ technology puts flexibility at your fingertips. By using the switch located on the driver junction box, the user can choose from a range color temperatures:

2700K/3000K/3500K/4000K/5000K

Specialty

Creating products that enhance your lighting experience is a top priority for **HALO**. Our specialty products provide a unique value to homeowners, installers, and builders. From nightlight features to canless sloped fixtures that give you a regressed downlight at any pitch, **HALO** provides solutions to improve your experience,



RL Nightlight

LED Downlight / Nightlight



RL4069NLWHDMR

RL6069NLWHDMR

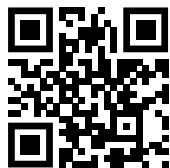


| | |
|---------------|-----------------------------------|
| Size / Shape | 4" & 6" Round |
| Canless Type | Regressed |
| Lumens (Max.) | 1000 |
| CRI | 90 |
| CCT | 2700/3000/3500K/4000K/5000K |
| Input Voltage | 120V |
| Control | Field Selectable 5 CCT, Phase Cut |



Don't be left in the Dark!

The HALO RL Night Light Direct Mount features two modes: downlight mode for general area illumination and night light mode for a gentle glow illuminating the acrylic trim. Simply toggle your light switch to change modes.



Scan or Click
Learn More!

RL Slope

LED Slope Adjustable



RLS4-DM

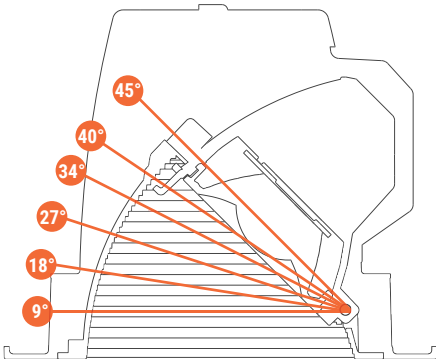


RLS6-DM



| | |
|---------------|-----------------------------------|
| Size / Shape | 4" & 6" Round |
| Canless Type | Regressed / Slope |
| Lumens (Max.) | 1500 |
| CRI | 90 |
| CCT | 2700/3000/3500K/4000K/5000K |
| Input Voltage | 120V |
| Control | Field Selectable 5 CCT, Phase Cut |

Slope Angles



Adjusts from 9° to 45° to match 2/12 to 12/12 ceiling pitches.



Scan or Click
Learn More!



HU11

LED Selectable CCT Undercabinet



HU11P



HU11MB



| | |
|----------------------|-----------------------------------|
| Lengths | 9", 18", 24", 36" & 48" |
| Finishes | White and Matte Black |
| Lumens (Max.) | 380 lm/ft |
| CRI | 90 |
| CCT | 2700K/3000K/4000K |
| Input Voltage | 120V |
| Control | Field Selectable 3 CCT, Phase Cut |



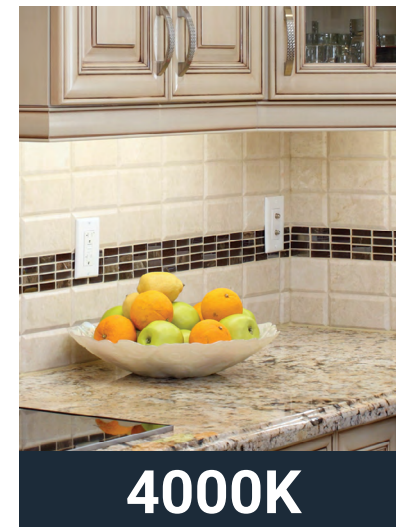
Scan or Click
Learn More!



2700K



3000K



4000K



Connectors & Accessories



3' Daisy Chain Connector
HU101



6' Daisy Chain Connector
HU102



12' Daisy Chain Connector
HU1010



18' Daisy Chain Connector
HU1011



24' Daisy Chain Connector
HU103



120' Daisy Chain Connector
HU104



48' Power Cord - 120V only
HU115



1-1/2' Male-to-Male Connector
HU107



Splice Box
HU109



Master Switch
HU10MS

Finish: P = White, MB = Matte Black
Example: HU101P = 3' Daisy Chain Connector, White

LW

Metalux LED Wrap



LW



| | |
|---------------|-----------------------|
| Size | 4' length x 6.8" wide |
| Lumens (Max.) | 4,617 |
| CRI | 80 |
| CCT | 4000K |
| Input Voltage | 120V |
| Control | 0-10V |

WP

Metalux LED Wrap



WP



| | |
|---------------|------------------------------|
| Size | 2' and 4' length x 5.1" wide |
| Lumens (Max.) | 3,400 |
| CRI | 80 |
| CCT | 4000K |
| Input Voltage | 120-277V |
| Control | NA |





SHP BTS

Metalux Bluetooth Shoplight



SHP BTS



| | |
|----------------------|----------------------------|
| Size | 43" length, 5' cord & plug |
| Lumens (Max.) | 4500 |
| CRI | 80 |
| CCT | 4000K |
| Input Voltage | 120V |
| Control | NA |

- Wirelessly connect with any iOS or Android device
- Integral luminaire speakers deliver a full, natural sound

SHP

Metalux Shoplight



SHP

| | |
|----------------------|----------------------------|
| Size | 43" length, 5' cord & plug |
| Lumens (Max.) | 4500 |
| CRI | 80 |
| CCT | 4000K |
| Input Voltage | 120V |
| Control | NA |



Product to use:
HLC / SMD / LT / LT-DM / HU11 / WP



Product to use:
HLB / RL-DM / LT-DM / RL / LT / RL Night Light



Product to use:
HLB / RL-DM / LT-DM / RL / LT / RL Night Light / HU11

Single Family



Product to use:
HLB8 / HLB12 / SMD12 / SMD14



Product to use:
HLB8 / HLB12 / LCR / LW / WP



Product to use:
HLB8 / HLB12 / SMD12 / SMD14 / LCR

Multi Family

Lighting Product Lines

Ametrix
AtLite
Corelite
Ephesus
Fail-Safe
HALO
HALO Commercial
Invue
io
IRiS
Lumark
Lumière
McGraw-Edison
Metalux
MWS
Neo-Ray
Portfolio
RSA
Shaper
Streetworks
Sure-Lites
Telensa

Controls Product Lines

Greengate

Connected Lighting Systems

Fifth Light (Canada Only)
WaveLinx

IoT Platform

Trellix