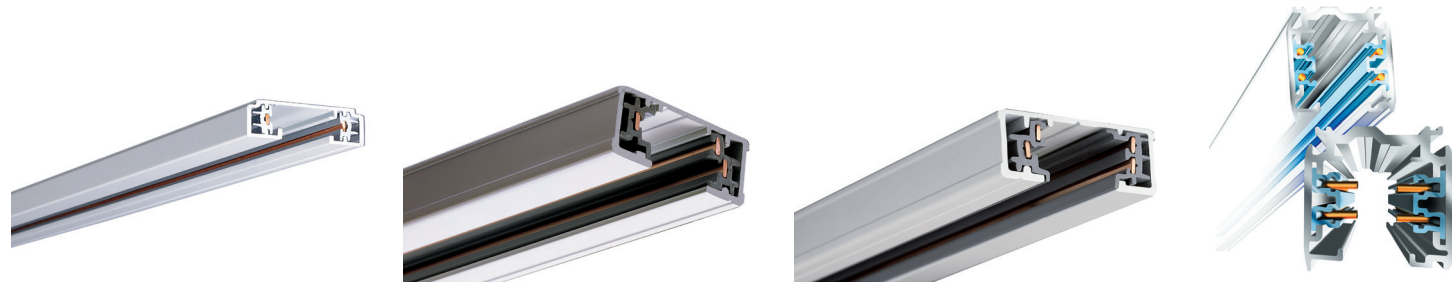




	811	812	802	806/807 SM	806/807	806/807HO	806XHO	808	815 Stasis Small	815 Stasis Medium	815 Stasis Square
Aperture Size	2"	2"	27"x4"	3"	4"	6"	6"	3", 4"	3"	4"	5"x5"
Lumen Output	800 - 1100	800 - 1100	2000 - 4000	1000	1300	2600	4100	800 - 2500	500 - 1800	1000 - 3000	1000 - 4000
Max CBCP	9,646	9,646	1,570	11,119	11,057	32,900	54,312	29,149	20,858	62,838	43,990
CRI	90+	90+	80+	80+	80+	80+	80+	90+	90+	90+	90+
CCT	2700K, 3000K, 3500K, 4000K	2700K, 3000K, 3500K, 4000K	3000K, 4000K	2700K, 3000K, 4000K	2700K, 3000K, 4000K	2700K, 3000K, 4000K	2700K, 3000K, 4000K	2700K, 3000K, 3500K, 4000K	2700K, 3000K, 3500K, 4000K	2700K, 3000K, 3500K, 4000K	2700K, 3000K, 3500K, 4000K
Beam Widths	15°, 25°, 40°	15°, 25°, 40°	Wall Wash Only	14°, 18°, 28°, 44°	15°, 22°, 37°	11°, 18°, 25°, 45°	11°, 16°, 25°, 45°	15°, 25°, 40°	8°, 15°, 25°, 44°	8°, 15°, 25°, 44°, 60°	13°, 20°, 35°, 60°
Media Accommodated	1	1	0	1	1	1	1	2	3	3	1
Snoot Accessory				•					•	•	
Wall Wash			•						•	•	•
Dimming Type	ELV/TRIAC Phasecut	ELV/TRIAC Phasecut	No Dimming	ELV/TRIAC Phasecut	ELV/TRIAC Phasecut	ELV/TRIAC Phasecut	No Dimming	ELV/TRIAC Phasecut	ELV/TRIAC Phasecut	ELV/TRIAC Phasecut	ELV/TRIAC Phasecut
Dimming Level	5%	5%	No Dimming	15%	15%	15%	No Dimming	5%	5%	5%	5%
Power (W)	10.5, 15.5	10.5, 15.5	25, 37, 49	12	18	34	48	12, 21, 35	7, 11, 20	13, 25, 38	14, 27, 34, 52
Energy Ratings	DLC Listed	DLC Listed	DLC Listed	DLC Listed	DLC Listed	DLC Listed	DLC Listed	DLC Listed	DLC Listed	DLC Listed	DLC Listed
LM70 Lifetime	50,000 hrs	50,000 hrs	50,000 hrs	50,000 hrs	50,000 hrs	50,000 hrs	50,000 hrs	50,000 hrs	50,000 hrs	50,000 hrs	50,000 hrs



	Lazer	L65	L64	TEK/HTEK
Dimensions	.625x1.375	.688x1.375	.688x1.375	1.25x1.25
Isolated Ground Bus Bar		•	•	•
Multi-Circuit			•	•
277 V				•
Dimming	ELV/TRIAC Phasecut	ELV/TRIAC Phasecut	ELV/TRIAC Phasecut	ELV/TRIAC Phasecut
Surface Mount	•	•	•	•
Recessed Mount				•
Pendant/Cable		•	•	•