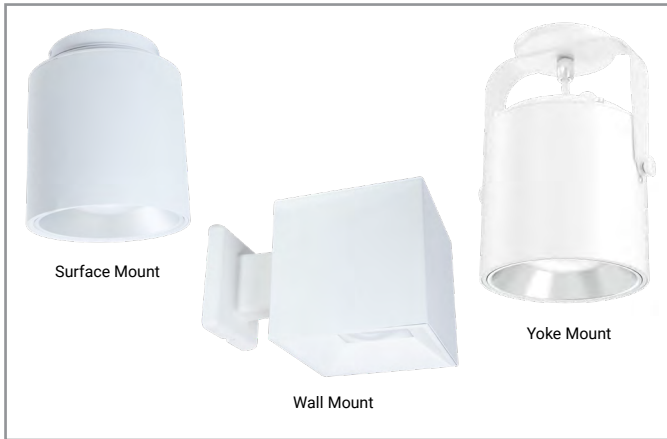


Project		Catalog #		Type	
Prepared by		Notes		Date	



Portfolio

LERS6B/LESQS6B Cylinders

LERS6B/LESQS6B/LSRSYM6B/LSSQSYM6B
LED 6" Shallow Round and Square Cylinder
Downlight and Directional

Typical Applications

Office • Education • Healthcare • Hospitality • Retail • Residential

Interactive Menu

- Order Information page 2
- Product Specifications page 4
- Energy Data page 4
- Photometric Data page 5
- Connected Systems page 8
- Product Warranty

Product Certification



Product Features



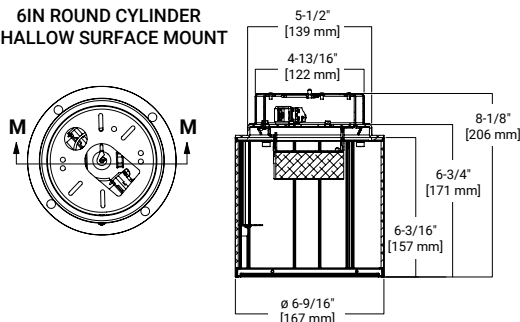
Top Product Features

- 1,000 to 4,000 lumens; Offered in 80, 90 and 97 CRI
- Round or square small surface-mount cylinders; Ceiling, wall, stem, up/down, yoke mount adjustable, LuxWire power over cable
- Extruded aluminum housing; Matte Black, White, Bronze and Silver paint finishes
- 6 color temperatures: 2400K, 2700K, 3000K, 3500K, 4000K and 5000K CCT; D2W™ option from 3000K to 1850K
- W2N Tunable White 2700K-6500K or 2000K-5000K
- Downlight or 30° adjustable reflector
- Options to meet Trade Agreements Act requirements

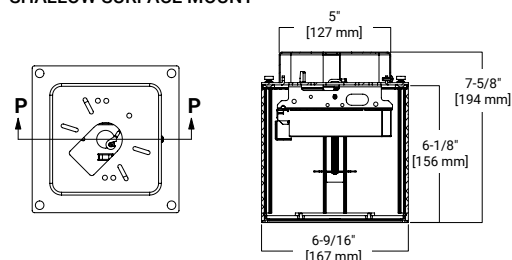
Dimensional and Mounting Details

additional product diagrams

6IN ROUND CYLINDER
SHALLOW SURFACE MOUNT



6IN SQUARE CYLINDER
SHALLOW SURFACE MOUNT



Order Information

SAMPLE ORDER NUMBER: LERS6B10D010

Domestic Preferences	Cylinder	Lumens	Voltage	Driver	Remote	Finish
Domestic Preferences ⁽²⁹⁾	Cylinder	Lumens	Voltage	Driver	Remote ⁽⁸⁾	Finish ⁽¹⁰⁾
[Blank] =Standard TAA =Trade Agreements Act	Ceiling surface mount LERS6B = 6-inch round shallow surface ceiling mount LESQS6B = 6-inch shallow square surface ceiling mount square aperture ⁽²⁾ LESQRS6B = 6-inch shallow square surface ceiling mount round aperture ⁽³⁾ LESQSMS6B = 6-inch shallow square surface ceiling mount square aperture with surface mount conduit canopy ⁽²⁾ LESQRSMS6B = 6-inch shallow square surface ceiling mount, round aperture with surface mount conduit canopy ⁽³⁾ Wall mount LERSWM6B = 6-inch round shallow wall mount LERSUD6B = 6-inch round shallow wall mount up/down ^{(1) (5)} LESQWMS6B = 6-inch shallow square wall mount square aperture ⁽²⁾ LESQRWMS6B = 6-inch shallow square wall mount round aperture ⁽³⁾ LESQUDS6B = 6-inch shallow square wall mount up/down square aperture ^{(1) (4)} LESQRUDS6B = 6-inch shallow square wall mount up/down round aperture ^{(1) (5)} LuxWire aircraft cable LESQUDSPC6B = 6-inch shallow up/down square, square opening LuxWire aircraft cable with power 120" ^{(4) (21) (23)} LESQRUDSPC6B = 6-inch shallow up/down square, round opening LuxWire aircraft cable with power 120" ^{(5) (21) (23)} LERSUDSPC6B = 6-inch shallow up/down round LuxWire aircraft cable with power mount 120" ^{(5) (21) (23)} LESQSPC6B = 6-inch shallow square square aperture surface ceiling mount LuxWire aircraft cable with power 120" ⁽²³⁾ LESQRSPC6B = 6-inch shallow square with round aperture surface ceiling mount LuxWire aircraft cable with power 120" ⁽²³⁾ LERSPC6B = 6-inch shallow round surface ceiling mount LuxWire aircraft cable with power 120" ⁽²³⁾ Yoke mount LERSYM6B = 6-inch round shallow yoke mount ⁽²⁴⁾ LESQYMS6B = 6-inch shallow square yoke mount square aperture ^{(2) (24)} LESQRYS6B = 6-inch shallow square yoke mount round aperture ^{(3) (24)}	10 =1000 lumens 15 =1500 lumens 20 =2000 lumens 30 =3000 lumens 40 =4000 lumens	blank =120-277V 3 =347V ⁽⁶⁾	D010 =120-277V 0-10V 1% dimming D010TR =0-10V (120-277V) or line voltage (120V) dimming, 5-100% DE010 =120-277V 0-10V 0% linear dimming D5LT =Fifth Light (DALI) logarithmic dimming DMX =DMX/RDM logarithmic Dimming ⁽⁷⁾ DMXC5 =DMX/RDM logarithmic Dimming with RJ45 connection ⁽⁷⁾ DL2 =1 to 100% dimming, 120V Lutron Hi-Lume forward phase dimming DLE =Lutron Ecosystem dimming 1% to 100%, 120-277V Tunable White 1000-2000 lumens ⁽²³⁾ DE010W2N2765 =0-10V dimming, 0% to 100%, 120-277V, 2700K-6500K DE010W2N2050 =0-10V dimming, 0% to 100%, 120-277V, 2000K-5000K D5LTW2N2765 =Fifth Light DALI dimming, 0% to 100%, 120-277V, 2700K-6500K D5LTW2N2050 =Fifth Light DALI dimming, 0% to 100%, 120-277V, 2000K-5000K	blank =Integral driver R =Remote driver ⁽⁹⁾	P =White MB =Matte Black SL =Silver BZ =Bronze

SAMPLE ORDER NUMBER: EC6B10208035

Domestic Preferences	Power Module	Lumen Levels	Color				
Domestic Preferences ⁽²⁹⁾	Power Module	Lumen Levels ⁽¹⁶⁾	Color				
[Blank] =Standard TAA =Trade Agreements Act	EC6B =6-inch cylinder light engine ECA6B =6-inch cylinder adjustable light engine	1020 =1000, 1500, or 2000 Lumens 3040 =3000 or 4000 Lumens 1040 =1000, 1500, 2000, 3000 or 4000 Lumens	80 CRI 8027 = 80CRI, 2700K 8030 = 80CRI, 3000K 8035 = 80CRI, 3500K 8040 = 80CRI, 4000K 8050 = 80CRI, 5000K	90 CRI 9024 = 90CRI, 2400K 9027 = 90CRI, 2700K 9030 = 90CRI, 3000K 9035 = 90CRI, 3500K 9040 = 90CRI, 4000K 9050 = 90CRI, 5000K	97 CRI 9727 = 97CRI, 2700K 9730 = 97CRI, 3000K	Dim 2 Warm 109030D2W =1000 Lumen, 90 CRI, Dim 2 Warm, IC Rated 159030D2W =1500 Lumen, 90 CRI, Dim 2 Warm, IC Rated 209030D2W =2000 Lumen, 90 CRI, Dim 2 Warm, IC Rated 309030D2W =3000 Lumen, 90 CRI, Dim 2 Warm	W2N Tunable White ⁽²²⁾ 1020W2N902050 =1000, 1500, 2000 lumens, 90 CRI, tunable white 2000K-5000K 1020W2N902765 =1000, 1500, 2000 lumens, 90 CRI, tunable white 2700K-6500K

SAMPLE ORDER NUMBER: 6LBSS3H

Domestic Preferences	Trim	Reflector	Finish
Domestic Preferences ⁽²⁹⁾	Trim	Reflector	Finish
[Blank] =Standard TAA =Trade Agreements Act ⁽³⁰⁾	6LB =6" Reflector	SS3 =Round shallow spun aluminum SCS3 =Round shallow die cast SCSSQ3 =Square shallow die cast	LI =Specular Clear ⁽¹⁷⁾ H =Semi-Specular Clear ⁽¹⁷⁾ WMH =Warm Haze ⁽¹⁷⁾ WH =Wheat ⁽¹⁷⁾ GPH =Graphite Haze ⁽¹⁷⁾ B =Specular Black ⁽¹⁷⁾ MW =Matte White MB =Matte Black ⁽¹⁸⁾ MMS =Matte Metallic Silver ⁽¹⁸⁾
	6LBA =0-30° directional ⁽²⁸⁾		MW =Matte White MB =Matte Black MMS =Matte Metallic Silver

Notes

(1) Limit 3000 lumens with integral driver, 4000 lumens with remote driver

(2) Square reflector

(3) Round reflector

(4) Square reflector, requires two reflectors and light engines

(5) Round reflector, requires two reflectors and light engines

(6) 347V integral D010 only.

(7) DMX fixtures default to full on upon loss of DMX signal

(8) Up down surface mount require 2 driver assemblies

(9) Order remote driver separately. See below to order.

(10) Consult factory for custom finishes.

(16) Nominal Lumens will vary depending on selected color, driver and reflector finish.

(17) Anodized or spun reflectors

(18) Die cast only

(21) LuxWire limited to 3000 lumens

(22) W2N not compatible with LuxWire.

(23) Canopy mount driver available for all drivers except DMX, omit R in ordering information

(24) Ceiling mount only

(28) Order with ECA6B light engine

(29) Only product configurations with this designated prefix are built to be compliant with the Trade Agreements Act of 1979 (TAA). Please refer to [DOMESTIC PREFERENCES](#) website for more information. Components shipped separately may be separately analyzed under domestic preference requirements. Accessories sold separately will be separately analyzed under domestic preference requirements. Consult factory for further information.

(30) Available with spun aluminum only.

Order Information

REQUIRED if Remote Driver (R) is specified on Cylinder

Domestic Preferences	Remote Drivers	Lumens	Voltage	Driver	Options	Controls
Domestic Preferences ⁽²⁹⁾	Remote Drivers ⁽⁸⁾	Lumens	Voltage ⁽¹²⁾	Driver	Options	Controls
[Blank] =Standard TAA =Trade Agreements Act	R100 =Remote 100 ft R75 = Remote 75ft R50 = Remote 50 ft R25 = Remote 25ft R15 = Remote 15ft R5 = Remote 5ft R2 = Remote 2 ft	10 =1000 lumens 15 =1500 lumens 20 =2000 lumens 30 =3000 lumens 40 =4000 lumens ⁽¹¹⁾	blank =120-277V up to 3000 lumens 1 =120V 4000 lumens 2 =277V 4000 lumens 3 =347V	D010 =120-277V 0-10V 1% dimming D010TR =0-10V (120-277V) or line voltage (120V) dimming, 5-100% DE010 =0-10V Linear Dimming, 0% to 100%, 120V-277V D5LT =Fifth Light® (DALI) Logarithmic Dimming, 0% to 100%, 120V-277V DMX =DMX/RDM Logarithmic Dimming, 0% to 100%, 120V-277V ⁽⁷⁾ DMXC5 =DMX/RDM Logarithmic Dimming, 0% to 100%, 120V-277V, with RJ45 connection ⁽⁷⁾ DL2 =1 to 100% dimming, 120V Lutron Hi-Lume forward phase dimming ⁽¹³⁾ DLE =Lutron Ecosystem dimming 1% to 100%, 120-277V ⁽¹³⁾ DLV =Low Voltage System Tunable White 1000-2000 lumens^{(14) (22)} DE010W2N2765 =0-10V dimming, 0% to 100%, 120-277V, 2700K-6500K DE010W2N2050 =0-10V dimming, 0% to 100%, 120-277V, 2000K-5000K D5LTW2N2765 =Fifth Light DALI dimming, 0% to 100%, 120-277V, 2700K-6500K D5LTW2N2050 =Fifth Light DALI dimming, 0% to 100%, 120-277V, 2000K-5000K	EM7 =7W emergency module with remote test switch EM14 =14W emergency module with remote test switch EMB0D =Bodine® Emergency Module with Remote Test Switch EMV7 =7W emergency module for use with DLV driver with remote test switch EMV14 =14W emergency module for use with DLV driver with remote test switch	WTA = Factory installed WaveLinX sensor Kit ^{(15) (26)} WTK = Factory installed WaveLinX Lite Sensor Kit ^{(15) (27)}

Accessories	Type	Lengths
Accessories ⁽²⁸⁾	Type	Lengths
Pendant Kit⁽¹⁹⁾ P836P =White pendant stem kit for round suspended mount cylinder P836BZ =Bronze pendant stem kit for round suspended mount cylinder P836MB =Matte black pendant stem kit for round suspended mount cylinder P836SL =Silver pendant stem kit for round suspended mount cylinder	Blank =5 conductor for use with 0-10V driver 3C =3 conductor for use with 120 or 277V 5C =conductor for use with D5LT drivers DMX =No conductors for use with DMX RM = for Remote drivers	Blank =36" SP =* Specify 6" to 144" in 1" increments
Conduit pendant kit⁽²⁵⁾ PMRCC6P = Round pendant stem kit with conduit knockout cover, white PMRCC6MB = Round pendant stem kit with conduit knockout cover, black PMRCC6BZ = Round pendant stem kit with conduit knockout cover, bronze PMRCC6SL = Round pendant stem kit with conduit knockout cover, silver	PMSQCC6P = Square pendant stem kit with conduit knockout cover, white PMSQCC6MB = Square pendant stem kit with conduit knockout cover, black PMSQCC6BZ = Square pendant stem kit with conduit knockout cover, bronze PMSQCC6SL = Square pendant stem kit with conduit knockout cover, silver	Blank =36" SP =* Specify 6" to 144" in 1" increments
Aircraft cable⁽²⁵⁾ AC120P =120" white aircraft cable kit AC48P =48" white aircraft cable kit	AC120MB =120" black aircraft cable kit AC48MB =48" black aircraft cable kit	Blank =5 conductor DMXC5 =DMX/RDM logarithmic Dimming with RJ45 connection
LNE6RUD =up/down gasketed lens, wet location, round LNE6SQUD =up/down gasketed lens, wet location, square Conduit Kit⁽²⁵⁾ SMRCC6P = Round conduit canopy for surface mount, white SMRCC6MB = Round conduit canopy for surface mount, black SMRCC6BZ = Round conduit canopy for surface mount, bronze SMRCC6SL = Round conduit canopy for surface mount, silver Connected Lighting Systems⁽¹⁵⁾ WTA = Field installed WaveLinX sensor Kit ⁽²⁶⁾ WTK = Field installed WaveLinX Lite Sensor Kit ⁽²⁷⁾		

Notes

(7) DMX fixtures default to full on upon loss of DMX signal

(8) Up down surface mount require 2 driver assemblies

(11) Specify voltage

(12) Voltage must be specified for 4000 lumens and above

(13) Only available up to 25 ft.

(14) Not available with up/down

(15) Refer to system specifications for additional information, features, and benefits. Order either factory installed option or accessory.

(19) 0-45° slope.

(20) Use with remote driver.

(22) W2N not compatible with LuxWire.

(25) Not for use with remote driver

(26) WTA = WaveLinX wireless sensor kit for daylight dimming, PIR motion sensing, and optional RLTS - Real Time Location Services, use with 0-10V only.

(27) WTK = WaveLinX Lite tile mount sensor kit for daylight dimming, PIR motion sensing, use with D010 only (Refer to WaveLinX Lite system specifications)

(29) Only product configurations with this designated prefix are built to be compliant with the Trade Agreements Act of 1979 (TAA). Please refer to [DOMESTIC PREFERENCES](#) website for more information. Components shipped separately may be separately analyzed under domestic preference requirements. Accessories sold separately will be separately analyzed under domestic preference requirements. Consult factory for further information.

Product Specifications

Lower Reflector

- Painted die-cast aluminum or spun aluminum lower reflector with a lensed upper optical chamber provides superior lumen output with minimal source brightness
- Square surface mount available with square or round reflectors
- Spun reflectors are available in all Portfolio finishes
- Directional with baffle tilts from 0-30°

Trim retention

- Two torsion springs hold flange tightly to the cylinder lip

Cylinder

- Shallow round and soft square extruded aluminum
- Matte white, bronze, silver or matte black. Consult factory for custom finishes.
- Available in standard and shallow heights
- Yoke mount provides +/-45° lockable tilt

Mounting

- Mounting plate installs to mounted junction box
- Cylinder mounts to plate with easy twist and lock hooks for ceiling mount
- For wall mount, mounting arm attaches directly to junction box via a robust mounting plate
- Offered with optional stem and aircraft cable
- LuxWire™ provides low voltage power to the cylinder via aircraft cable
- Conduit canopy allows for mounting pendant and surface cylinder on hard ceilings provided in painted finish to match the cylinder accommodates ½" or ¾" conduit.

Thermal

- Aluminum heat sink conducts heat away from the LED module for optical performance and longer life

LED System

- Contains a plurality of high brightness white LED's combined with high reflectance upper reflector and convex transitional lens producing even distribution with no pixilation
- Lumen output shall not decrease by more than 10% over the minimum life of 55,000 hours (L90 > 55,000 hours)
- Color variation within 2-step MacAdam ellipses
- Quick disconnect allows for tool-less replacement of LED engine from below ceiling
- Available in 2400K, 2700K, 3000K, 3500K, 4000K and 5000K correlated color temperature (CCT)
- Available in 80, 90 or 97 color rendering index (CRI)

VividTune™ Color Tuning Solutions

- D2W™ – Dim-to-Warm shifts CCT from 3000K to 1850K as fixture dims, mimicking halogen sources
- W2N – Tunable white CCT range from 2700K to 6500K or 2000K to 5000K; 90 CRI (remote only)

Driver

- Standard 120-277V 0-10V dimming driver provides flicker-free dimming from 100% to 1%
- Optional 120V leading edge, <1% 0-10V, Fifth Light, DMX or Lutron®
- Remote driver option up to 100' based on driver selection
- Distributed low voltage power system combines power, lighting, and controls with ease of installation.

Connected Lighting System Options

Two WaveLinX connected systems to choose from. Refer to WaveLinX system specifications and application guides for details.

WaveLinX Wireless System Tilemount Sensor Kit

- WaveLinX Wireless WTA tile mount sensor kit offers daylight dimming, PIR motion sensing, scene and zone configuration, automatic commissioning; and optional RLTS - Real Time Location Services available.

WaveLinX Lite System Tilemount Sensor Kit

- WaveLinX Lite WTK tile mount sensor kit offers daylight dimming and PIR motion sensing, scene and grouping configuration.

WaveLinX Tilemount Kits Application

- The WTA and WTK tilemount kits include a control module mounted on the luminaire junction box via 1/2" knock-out, and a tilemount sensor on 54-inch whip; for ceiling installation by direct-mount spring clips or via mounting bracket in octagon ceiling boxes.
- The WTA and WTK tilemount kits may be ordered as factory installed on the luminaire, or ordered separately as a field installed accessory kit.

Compliance

- Pendant mount cULus Listed for damp locations
- Ceiling mount cULus Listed for wet locations and IP66 compliant covered ceiling
- Wall mount cULus Listed for wet location and IP66 compliant, requires lens accessory for up/down wall mount
- EMI/RFI emissions per FCC 47CFR Part 18 Class B consumer limits
- RoHS compliant
- Photometric testing completed in accordance with IES LM-79
- LED life testing completed in accordance with IES LM-80 standards

Warranty

- Five-year warranty

Energy Data

ENERGY DATA
Sound Rating: Class A standards
(Values at non-dimming line voltage)
Minimum Starting Temperature: -30°C (-22°F)
EMI/RFI: FCC Title 47 CFR, Part 15, Class B (Consumer)
Input Voltage: UNV (120V - 277V)
Power Factor: >0.90 (at nominal input 120-277 VAC & 100% of Rated Output Power)
Input Frequency: 50/60Hz

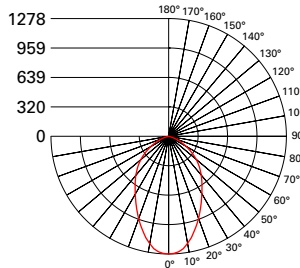
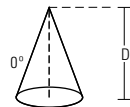
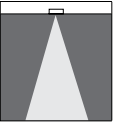
Lumens	120V		277V	
	Inrush (A)	Duration (ms)	Inrush (A)	Duration (ms)
1000 Lumen D010	1.02	0.041	2.18	0.021
1500 Lumen D010	1.02	0.042	2.24	0.064
2000 Lumen D010	1.02	0.077	2.43	0.027
3000 Lumen D010	1.15	0.067	3.26	0.027
4000 Lumen D010	1.2	0.088	3.9	0.03

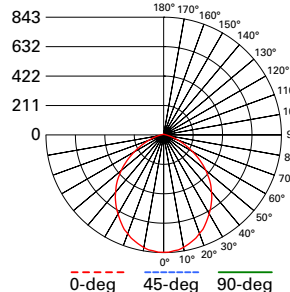
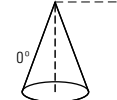
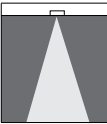
1000 Lumen D010		1500 Lumen D010		2000 Lumen D010	
Input Power: 11W	THD <14%	Input Power: 15.5W	THD <13%	Input Power: 21.2 W	THD <9%
Input Current: 0.09A	277V Input Current: 0.04A	Input Current: 0.13A	277V Input Current: 0.06A	Input Current: 0.18A	277V Input Current: 0.08A

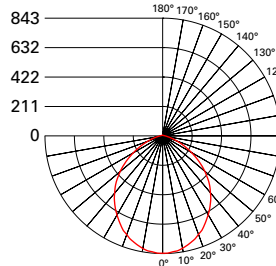
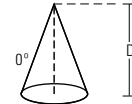
3000 Lumen D010		4000 Lumen D010		5000 Lumen D010	
Input Power: 27.6 W	THD <10%	Input Power: 41.6 W	THD <13%	Input Power: 52.5 W	THD <12%
Input Current: 0.23A	277V Input Current: 0.10A	Input Current: 0.35A	277V Input Current: 0.15A	Input Current: 0.44A	277V Input Current: 0.19A

6000 Lumen D010	
Input Power: 59.7 W	THD <14%
Input Current: 0.50A	277V Input Current: 0.22A

Photometric Data

WIDE		CANDLEPOWER DISTRIBUTION		CONE OF LIGHT		CANDELA TABLE		ZONAL LUMEN SUMMARY			LUMINANCE																																																										
Test Number	P411913					<table><tr><th>Degrees Vertical</th><th>Candela</th></tr><tr><td>0</td><td>1278</td></tr><tr><td>5</td><td>1259</td></tr><tr><td>15</td><td>1069</td></tr><tr><td>25</td><td>830</td></tr><tr><td>35</td><td>633</td></tr><tr><td>45</td><td>476</td></tr><tr><td>55</td><td>308</td></tr><tr><td>65</td><td>148</td></tr><tr><td>75</td><td>34</td></tr><tr><td>85</td><td>0</td></tr><tr><td>90</td><td>0</td></tr></table>		Degrees Vertical	Candela	0	1278	5	1259	15	1069	25	830	35	633	45	476	55	308	65	148	75	34	85	0	90	0	<table><tr><th>Zone</th><th>Lumens</th><th>% Fixture</th></tr><tr><td>0-30</td><td>800</td><td>39.5</td></tr><tr><td>0-40</td><td>1196</td><td>59.1</td></tr><tr><td>0-60</td><td>1837</td><td>90.7</td></tr><tr><td>0-90</td><td>2025</td><td>100</td></tr><tr><td>90-180</td><td>0</td><td>0</td></tr><tr><td>0-180</td><td>2025</td><td>100</td></tr></table>			Zone	Lumens	% Fixture	0-30	800	39.5	0-40	1196	59.1	0-60	1837	90.7	0-90	2025	100	90-180	0	0	0-180	2025	100	<table><tr><th>Average Candela Degrees</th><th>Average 0° Luminance</th></tr><tr><td>45</td><td>36864</td></tr><tr><td>55</td><td>29399</td></tr><tr><td>65</td><td>19263</td></tr><tr><td>75</td><td>7286</td></tr><tr><td>85</td><td>0</td></tr></table>		Average Candela Degrees	Average 0° Luminance	45	36864	55	29399	65	19263	75	7286	85	0
Degrees Vertical	Candela																																																																				
0	1278																																																																				
5	1259																																																																				
15	1069																																																																				
25	830																																																																				
35	633																																																																				
45	476																																																																				
55	308																																																																				
65	148																																																																				
75	34																																																																				
85	0																																																																				
90	0																																																																				
Zone	Lumens	% Fixture																																																																			
0-30	800	39.5																																																																			
0-40	1196	59.1																																																																			
0-60	1837	90.7																																																																			
0-90	2025	100																																																																			
90-180	0	0																																																																			
0-180	2025	100																																																																			
Average Candela Degrees	Average 0° Luminance																																																																				
45	36864																																																																				
55	29399																																																																				
65	19263																																																																				
75	7286																																																																				
85	0																																																																				
Housing	6B15D010																																																																				
Module	EC6B10208035																																																																				
Trim	6LBSS3LI																																																																				
Lumens	2025																																																																				
Efficacy	141.6 Lm/W																																																																				
SC	0.91																																																																				
UGR	22																																																																				
																																																																					

WIDE	CANDLEPOWER DISTRIBUTION	CONE OF LIGHT	CANDELA TABLE	ZONAL LUMEN SUMMARY	LUMINANCE							
Test Number P411914			Degrees Vertical	Candela	Zone	Lumens	% Fixture	Average Candela Degrees	Average 0° Luminance			
Housing 6B15D010			0	843	0-30	628	34.2	45	43050			
Module EC6B10208035			5	836								
Trim 6LBSCS3MMS			15	791								
Lumens 1836			25	708	0-40	1001	54.5			55	35249	
Efficacy 131.1 Lm/W	35	596	0-60	1635	89.1							
SC 1.16	45	467	0-90	1836	100	65	23835					
UGR 22	55	310	90-180	0	0			75	9856			
	65	154								0-180	1836	100
	75	39										
	85	1										
		90	0									
			MHFC L W									
		5.5'27.96.26.2										
		7'17.288										
		8'13.29.29.2										
		9'10.410.410.4										
		10'8.411.611.6										
		12'5.913.813.8										

MEDIUM	CANDLEPOWER DISTRIBUTION	CONE OF LIGHT	CANDELA TABLE	ZONAL LUMEN SUMMARY	LUMINANCE
Test Number P411915			Degrees Vertical Candela	Zone Lumens % Fixture	Average Candela Degrees Average 0° Luminance
Housing 6B15D010			0 843	0-30 628 34.2	45 43050
Module EC6B10208035			5 836	0-40 1001 54.5	
Trim 6LBSSQS3MMS			15 791		
Lumens 1836			25 708		
Efficacy 131.1 Lm/W	35 596	0-60 1635 89.1	55 35249		
SC 1.16	45 467	0-90 1836 100	65 23835		
UGR 22	55 310	90-180 0 0	75 9856		
	65 154	0-180 1836 100	85 823		
	75 39				
	85 1				
	90 0				

CCT Multipliers – 90CRI

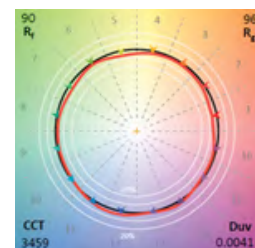
2700K	3000K	3500K	4000K
0.95	0.99	1.00	1.00

Multipliers for relative lumen values with other color temperatures.

Note: Refer to IES files for more product data.

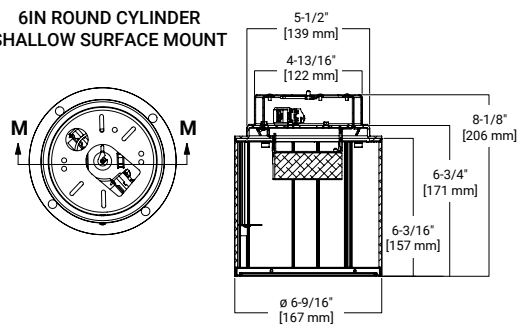
Color Metrics - TM-30-15 & CRI/CIE

TM-30-15	Rf = 90
	Rg = 96
CRI/CIE	Ra = 91.8
	R9 = 55.8

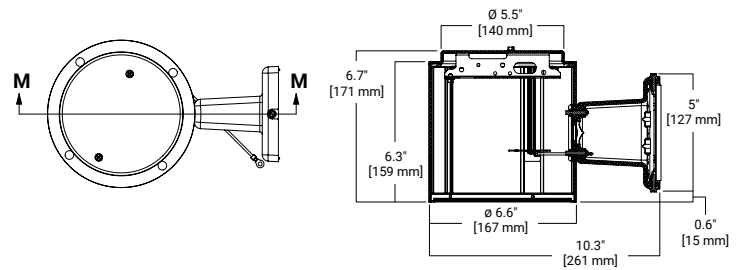


Dimensional and Mounting Details

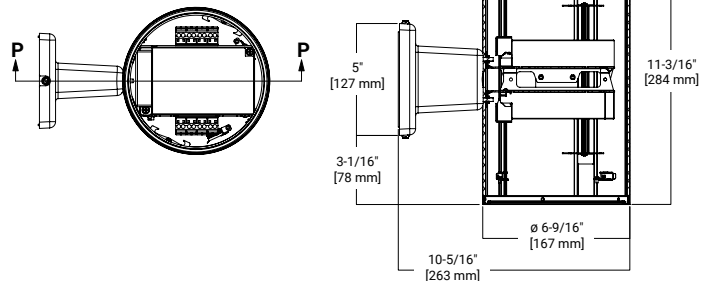
**6IN ROUND CYLINDER
SHALLOW SURFACE MOUNT**



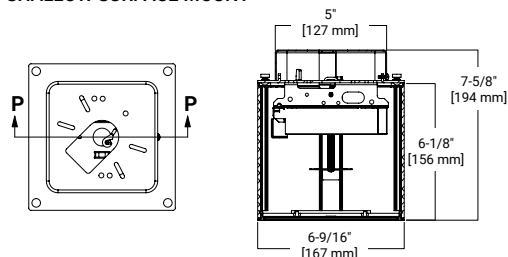
**6IN ROUND CYLINDER
SHALLOW WALL MOUNT**



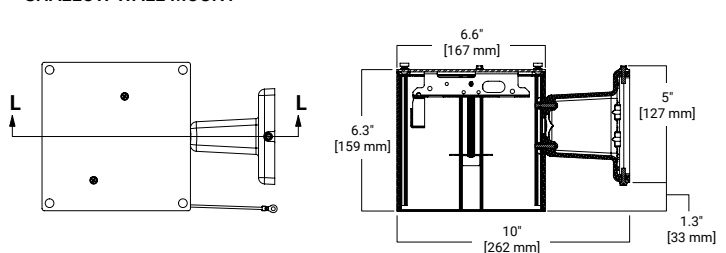
**6IN ROUND CYLINDER
SHALLOW UP DOWN**



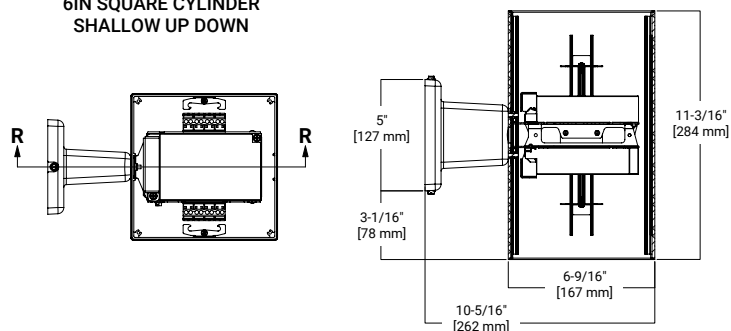
**6IN SQUARE CYLINDER
SHALLOW SURFACE MOUNT**



**6IN SQUARE CYLINDER
SHALLOW WALL MOUNT**

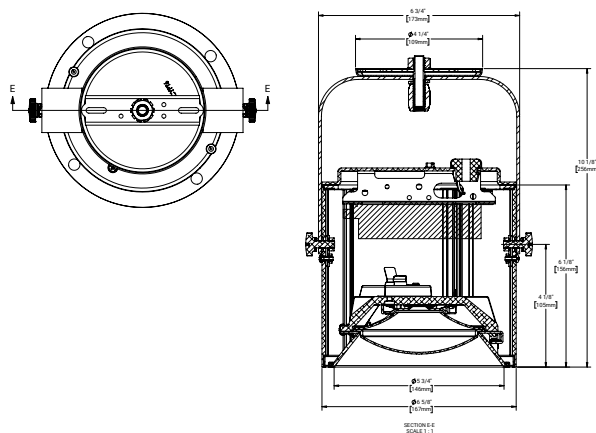


**6IN SQUARE CYLINDER
SHALLOW UP DOWN**

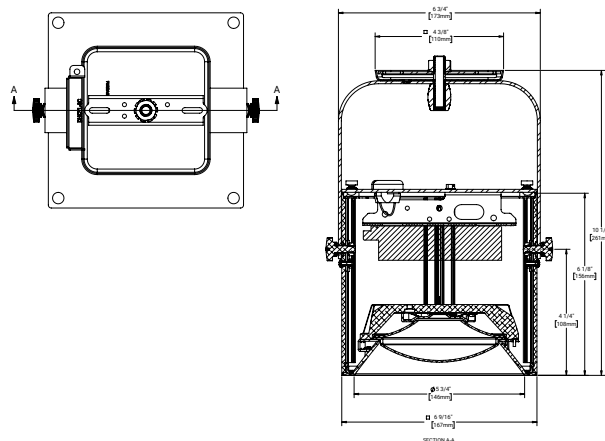


Dimensional and Mounting Details

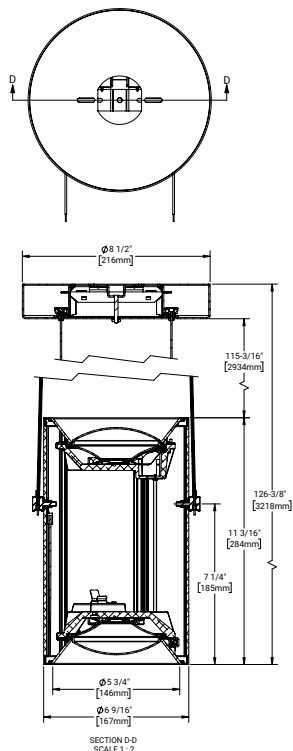
6IN ROUND CYLINDER
SHALLOW YOKE MOUNT



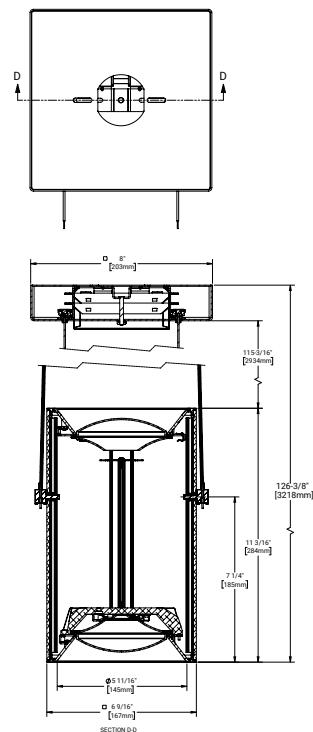
6IN SQUARE CYLINDER
SHALLOW YOKE MOUNT



6IN ROUND CYLINDER SHALLOW
POWER CORD UP DOWN PENDANT DRIVER



6IN SQUARE CYLINDER SHALLOW
POWER CORD UP DOWN PENDANT DRIVER



Connected Systems



WaveLinX Lite - WTK Tilemount Sensor

- Intuitive Android™ or Apple® iOS® app for basic system code compliant set up and configuration via Bluetooth
- Up to 28 unique areas per project site (WaveLinX Lite Bluetooth network)
- Up to 50 devices for an area, any one of 16 control zones, up to 6 occupancy sets, and custom lighting scenes
- Automatic occupancy or vacancy, sensor sensitivity, daylight dimming, etc. configurable through the app
- Refer to the WaveLinX system specifications for details



Device Security



Manual Dimmer



Occupancy Sensor



Daylighting Control



Manually Switched ON/OFF



Tuning Control

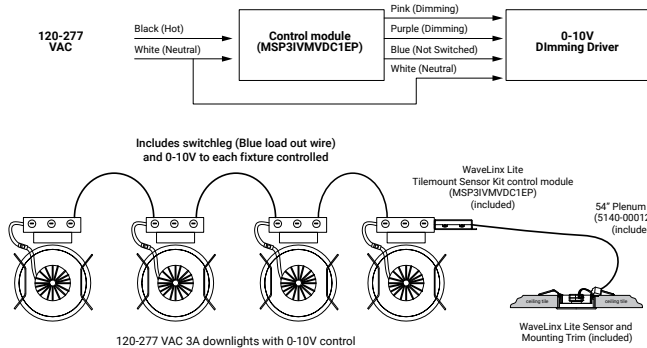


Lumen Maintenance Control

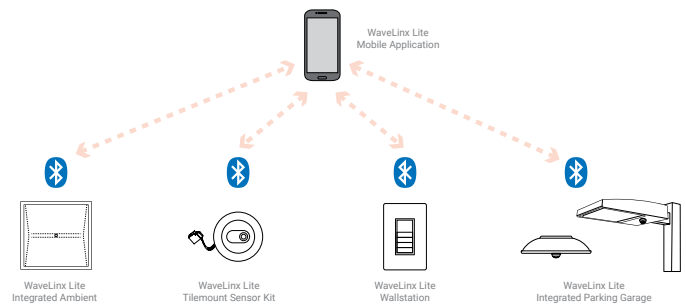


Scenes

WaveLinX Lite WTK Tilemount Wiring Diagram



WaveLinX Lite Bluetooth Enabled System



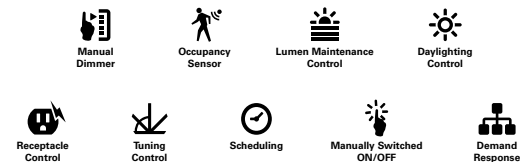
WaveLinX Wireless – WTA Tilemount Sensor



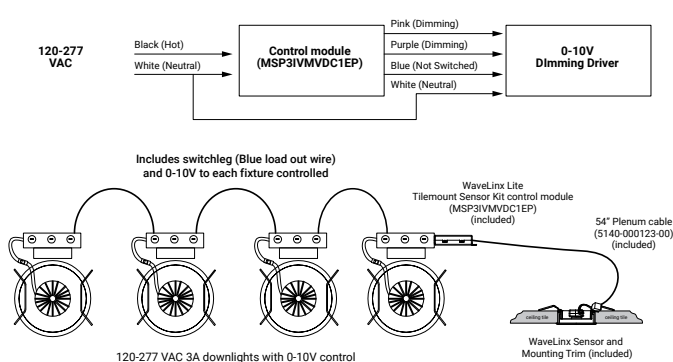
- WaveLinX Wireless functionality configures zones and customizes settings from one secure mobile app
- Automatic code commissioning that meets the strictest codes
- Fixtures and sensors integrate with Wireless Area Controller, Wall Stations, and Control Devices
- Stand-Alone Offices or Entire Building Network Installations



WaveLinX mobile app settings



WaveLinX Lite WTA Tilemount Wiring Diagram



WaveLinX Wireless Trellix Building Management Integration

