



Education Solutions

Dynamic lighting solutions let students shine.



Making **learning** bright

Today's education campuses require healthy spaces that promote learning, improve student productivity, and enhance the student experience. Lighting and controls solve those needs while also providing significant energy and cost savings.

Learn how lighting can help students maximize their talents and capabilities in the classroom and beyond.



Metalux - Perceive

Front Cover: **Fail-Safe GAW UV-C Air Wall Mount, GLR Germicidal UV Louvered Recessed & Metalux Cruze**

It's time to shed some light on the possibilities



Challenges	4	Lighting By Space	18
Trends	5	Classroom	19
Technology	6-7	Cafetorium & Multi-purpose	20
Color Tuning: VividTune	10	Theater & Auditorium	21
3D Printing: Shaper PrentaLux	11	Library	22
Augmented Reality: Light ARchitect	12	Higher Education	23
Modular Wiring System: MWS	13	Hallway & Stairway	24
UV-C Sanitation	14-15	Administration & Office	25
Connected System: WaveLinx	16	Exit & Emergency	26-27
Smart Spaces Platform	17	Natatorium	28
Better Environment	8-9	Indoor Athletic	29
		Outdoor Athletic	30-31
		Campus Pedestrian Space	32
		Walkways & Building Exterior	33
		Parking	34
		About Us	35



In step with today's challenges

Safety and security

In a survey of 21,000 teens, conducted between 2011 and 2017, 1 in 3 students reported not feeling safe at school. Schools face an ever-increasing number of threats, ranging from cyber attacks to bomb threats and violence.

<https://studyfinds.org/teens-dont-feel-safe-in-school/>

Navigating campuses

Large campuses can be difficult to navigate. It's hard to book available collaboration spaces and find them once booked, causing students to arrive late to meetings/classes or miss them entirely.

Technology adoption

Remote learning is augmenting traditional classroom learning, a strategy that was accelerated by the recent pandemic. Teachers have to adapt and incorporate technology in their curriculums while ensuring students acquire the soft skills traditionally gained through physical interaction.

<https://www.forbes.com/sites/sievakozinsky/2017/07/24/how-generation-z-is-shaping-the-change-in-education/?sh=23ba3e4f6520>

Inequality in education

In comparing the top 1% spending districts with that of the average spending districts between 2000 and 2015, the funding gap widened by 32%.

<https://hechingerreport.org/a-decade-of-research-on-the-rich-poor-divide-in-education/>

Decreasing attention spans

A Microsoft study examining data between the year 2000 and 2015 found that people's average attention span has decreased from 12 to 8 seconds. The drop is attributed to the increase in mobile engagement.

<https://time.com/3858309/attention-spans-goldfish/>

Accessibility

Better lighting makes school areas more accessible to the entire community, helping to strengthen relationships between the schools and surrounding neighborhoods.



Ahead of tomorrow's trends

Digitalization

By the end of 2017, more than 6.5 million students were enrolled in some type of remote learning course offered by a post-secondary degree-granting institution. Gen Z expects schools to have Smart Buildings equipped with the latest technology.

https://onlinelearningconsortium.org/news_item/new-study-six-million-students-now-enrolled-distance-education/

Sustainability

Energy usage is the second-largest source of expenses for school districts. The annual greenhouse gas emissions from K-12 school buildings in the U.S. are equivalent to 18 coal-fired power plants.

<https://betterbuildingssolutioncenter.energy.gov/accelerators/zero-energy-schools>

Facilitating learning

Living in the information age, teachers need to evolve from delivering knowledge to helping students learn how to learn, guiding them to the information, and helping them understand the information.

Wellness

Students and teachers spend a significant amount of time in school facilities and their wellness is key. Initiatives for improvement include better class acoustics, non-glare lighting, cleaner air quality, and healthy food availability.



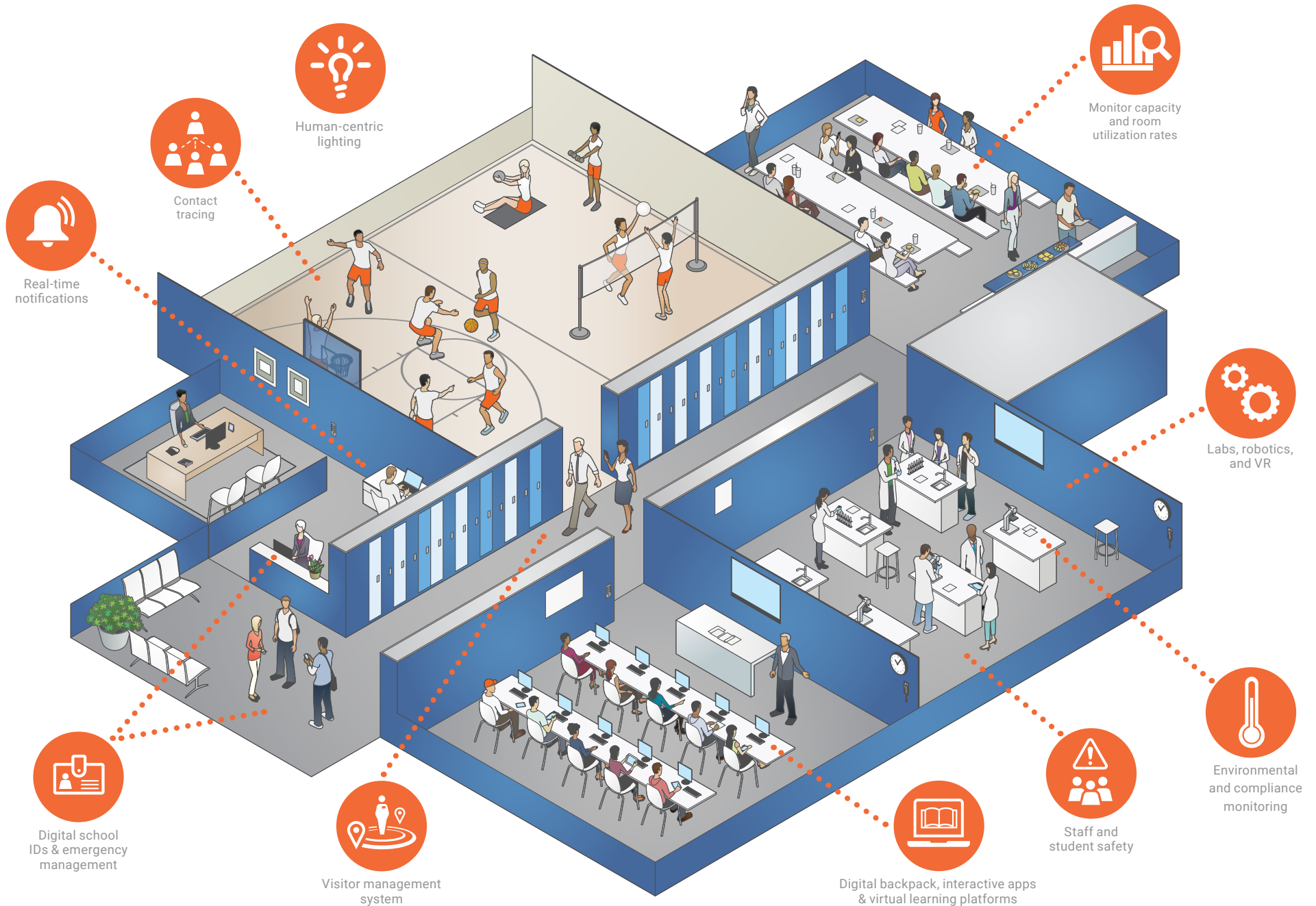


Corelite
Vaulta Linear

Cooper Lighting Solutions offers a
variety of technology solutions
for education campuses

Today's connected schools

Safeguard students, staff, equipment, and environments



Beyond Lighting: solutions to meet the moment

Lighting is no longer just about illumination.

By adding the transformative powers of connected technology, schools are able to better serve students, meet more ambitious objectives, even lower costs.

WELLNESS ■ HEALTH ■ SAFETY ■ PERFORMANCE





Digital solutions create a better environment for students.

Wellness

Lighting can influence academic performance. Research shows quality lighting helps students stay alert and better focus on their lessons. Color tuning, which mimics natural daylight and helps relieve stress, can be very effective in optimizing improvement in students with behavioral or autism issues.

- Color Tuning: VividTune
- Augmented Reality: Light ARchitect

Health

Outbreaks can be dramatically contained when reliable technology is added to the lighting control system, from UV-C sanitation to environmental monitoring, contact tracing, and hand hygiene.

- UV-C Upper Air and UV-C Surface sanitation solutions
- App for Geofencing: Locate
- Connected System: WaveLinX

Safety

Safety is a top consideration when designing campus lighting. Low-glare, uniform lighting can provide clear visibility for vehicles and pedestrians. Luminaire-mounted cameras and RTLS can help deter inappropriate behavior.

- Integrated camera: LumenSafe
- App for RTLS: Locate
- Connected System: WaveLinX
- Lighting for egress during power outages: Sure-Lites

Performance

Designing with the right level of lighting is key for student and teacher performance. Energy-saving features, such as daylight occupancy sensors, help schools achieve their operational target budget or sustainability goal.

- Code compliance
- Energy savings
- 3D printing design freedom

Color Tuning solutions

Discover the Power of Preference

The color temperature and intensity of lighting in education environments can affect mood, alertness, wellbeing, and even improve academic performance. Our easy-to-use VividTune white solutions allow students and staff to adjust color temperature and intensity according to the mood, scenario, or task at hand.

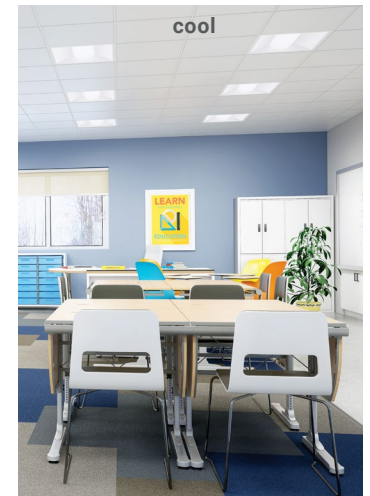
VividTune solutions are sustainable and easy to install. Schools can choose from a range of control solutions, from a simple 0-10V slide dimmer to more advanced connected lighting capabilities with WaveLinx.

Ideal for Special Needs Classrooms

The VividTune system is an appealing option for designers when creating lighting solutions for special education classes. It helps educators maximize student and staff results by reducing problem behaviors, increasing patience and attention, and increasing the school's interest in their special education programs.



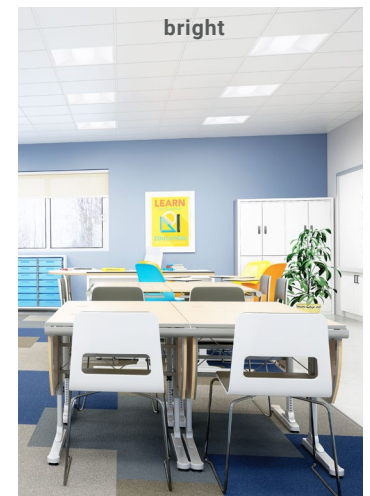
VividTune
color tuning solutions



color temperature



Change the color temperature of the space throughout the day to align more closely with people's circadian rhythms, from cooler light in the morning and afternoon to warmer light in the evening.



light intensity



Control the intensity of lighting to suit individual comfort levels or the task at hand.



3D printing technology

Introducing Shaper PrentaLux, where innovation comes to lighting

Designers create exclusive luminaires with choices from our vast collection of colors, textures, and shapes. Thousands of combinations are possible.

Then we use 3D printing technology to bring designers' vision to life.

Sustainability is built in. Our 3D printed lighting requires less material during manufacturing and we're able to recycle these products.

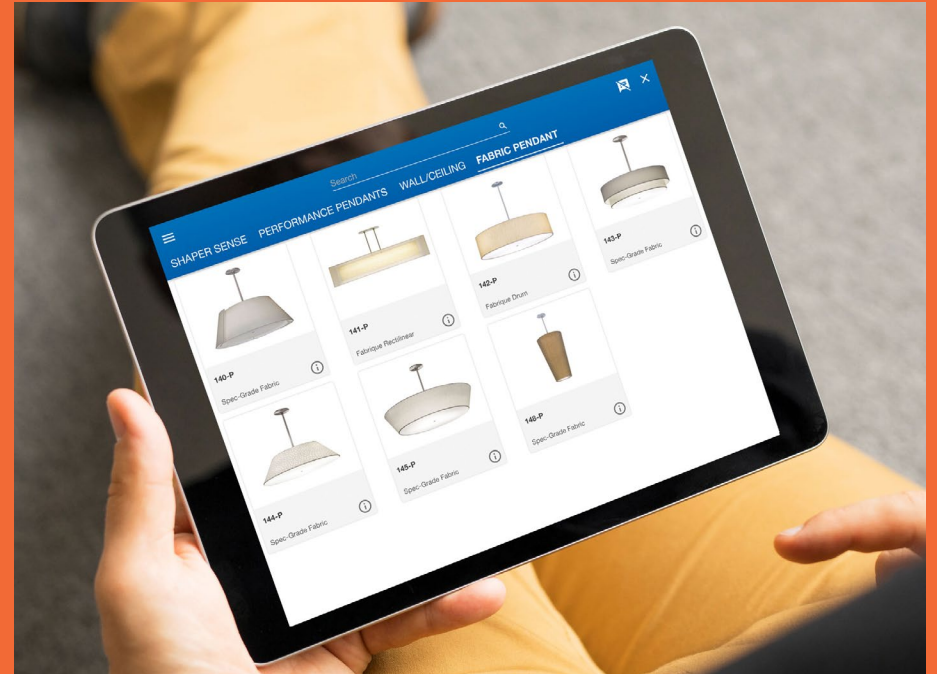
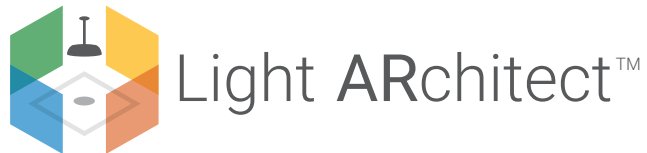
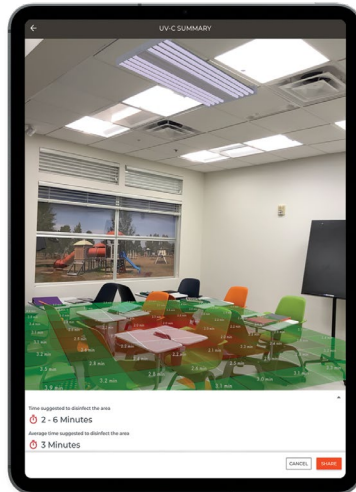
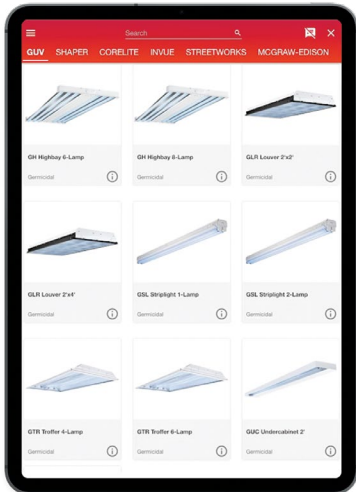


Light ARchitect App

Visualize your new lighting solution with augmented reality

We've got an app that lets us show you what different fixtures would look like in any space in your school, from the classroom to the cafeteria to the parking lot.

Using digitalization and augmented reality, our proprietary App lets us take a photo of the space that needs better lighting and superimpose a lighting design over it so you can visualize what the result. Best of all, our App lets us do this on the spot, in about 10 minutes.





Recessed Ceiling

TOTAL COST: MC Cable \$3,210 MWS \$2,440

LABOR: 77% 22%

MATERIAL: 23% 78%

100 Fixtures / 8' Centers /
Single Circuit / \$60.00 Hr.

**24% LOWER TOTAL COST
78% LESS LABOR**



Open Ceiling

TOTAL COST: MC Cable \$12,900 MWS \$8,850

LABOR: 71% 28%

MATERIAL: 29% 72%

100 Fixtures / 25' Centers /
Single Circuit / \$70.00 Hr.

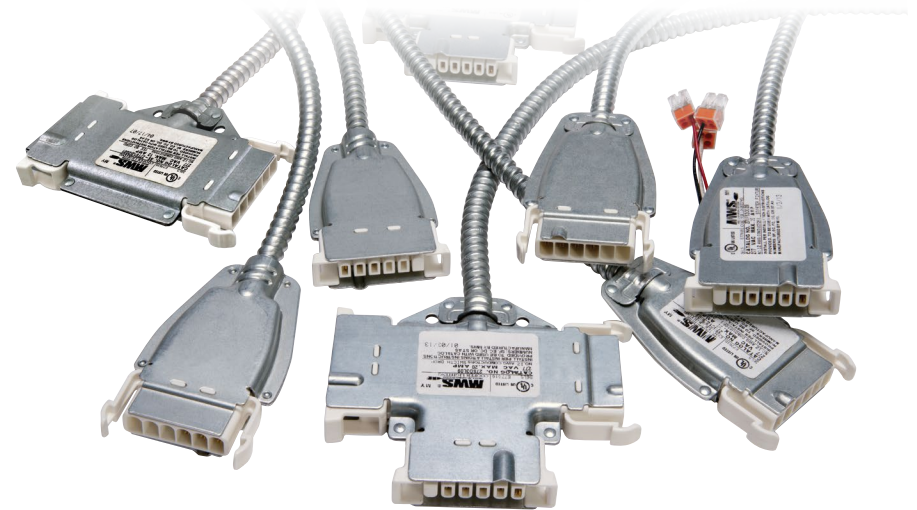
**32% LOWER TOTAL COST
73% LESS LABOR**

MWS solutions

Modular Wiring System

This sustainable wiring solution solves the challenges of branch circuit wiring in new construction and renovation projects. MWS is simple and cost-effective. Components arrive at the job site completely assembled and ready to be snapped together to form a branch circuit system.

- Reduces installation setup time and labor costs.
- Flexible, reconfigurable system enables future changes.
- Ideal for new construction or renovation.



MWS®
MODULAR WIRING SYSTEM

Better lighting improves wellness with **UV-C sanitation**

Quick, continuous, occupant-safe sanitation

UV-C upper air technology is safe to use in occupied spaces and runs continuously, quietly, and independently from your HVAC system. It's tested and proven to inactivate harmful pathogens in seconds, and is even CDC-recommended as part of a layered strategy to reduce SARS-CoV-2 transmission in certain settings.

Designed with safety in mind



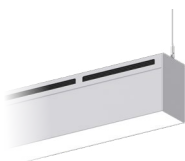
Fail-Safe's UV-C Air sanitation solutions distribute UV-C in the upper air, preventing direct human exposure to UV-C. The result is fresh air that's constantly cleaned and recirculated, similar to the tried and true method of opening the windows.

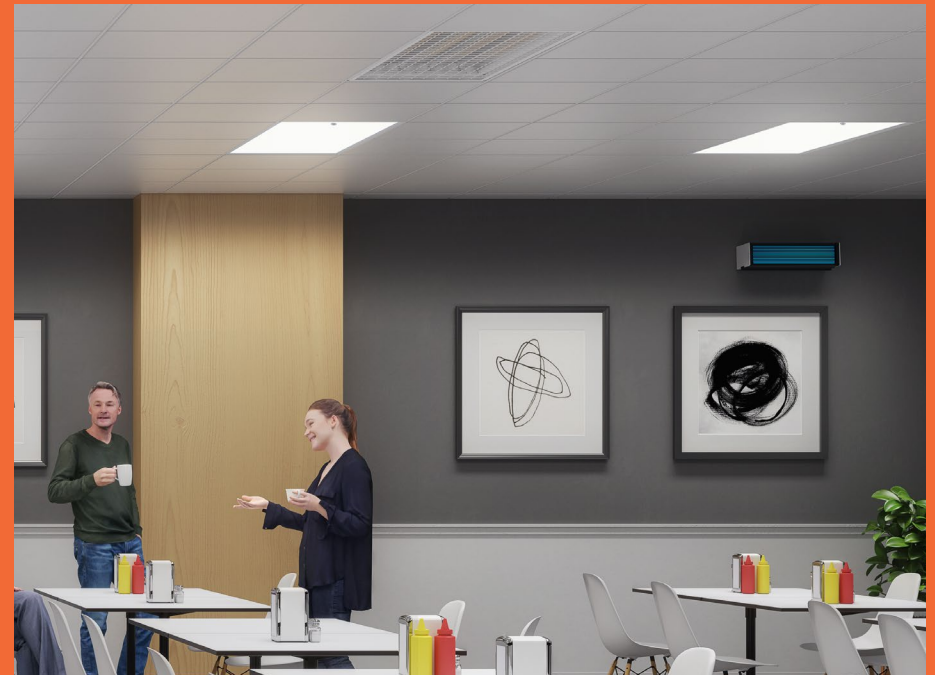
Save time and money

Installation costs are low because installation is simple and no control systems are required to operate Fail-Safe's UV-C Upper-Air Sanitation products. And because there's no additional demand on the HVAC system, Fail-Safe's UV-C Upper-Air Sanitation products cost less to use than other filter solutions.

Featured Air Products

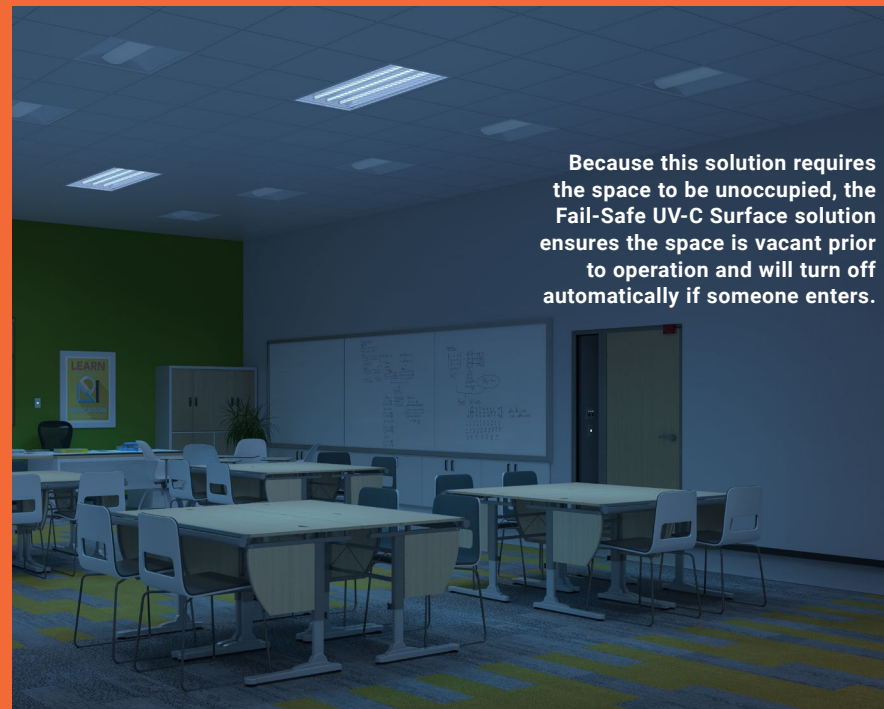
[Click on products to learn more](#)

LIGHTING			
	Fail-Safe GAW	Fail-Safe GAC	Neo-Ray Define UV-C
	<ul style="list-style-type: none">• Germicidal UV Air Wall Mount• Air sanitation fixture with UL 1598 listing• Provides air sanitation for large areas• Horizontal distribution keeps UV-C in the upper air• Can be used in occupied spaces	<ul style="list-style-type: none">• Germicidal UV Air Ceiling Mount• Air sanitation fixture with UL 1598 listing• Symmetrical coverage area• Horizontal distribution keeps UV-C in upper air• Can be used in occupied spaces	<ul style="list-style-type: none">• Direct LED + Indirect UV-C enabled• Suspended and wall mount family in 5" housing sizes• Upper Air UV-C enabled, safe operation while space is occupied• UV-C and ambient LED light are controlled separately• 2700K, 3000K, 3500K, 4000K, and 5000K correlated color temperatures available





Our lighting control solutions work unobtrusively in your school. Product details are at the bottom of this page.



Because this solution requires the space to be unoccupied, the Fail-Safe UV-C Surface solution ensures the space is vacant prior to operation and will turn off automatically if someone enters.

Surface Disinfection with UV-C Control System – Tested and Trusted

We developed the first and only UL8802 Safety Certified Controls Solution for UV-C Fixtures. Designed to meet UL1598 standards for safer disinfection than systems without an equivalent control system in place.

Featured Surface Products

Click on products to learn more

LIGHTING



UV-C GTR Troffer Recessed

- Provides maximum germicidal disinfection in grid or hard ceiling applications
- Available in 2' x 4' with 4- and 6-source options
- Compatible with standard grid ceilings
- Optional drywall kit
- Optional door with wireguard



UV-C GSL Striplight

- Available in 4' lengths with 1 or 2 UV-C sources
- Ideal for surface mounted or suspended
- Optional wireguard to protect sources from damage
- Optional reflectors for symmetric and asymmetric control

CONTROLS SOLUTIONS



UV-C Control Panel

- Manages the UV-C Control System based on inputs received from UV-C Clearance Pushbuttons and UV-C Magnetic Access Sensors
- Each UV-C Control Panel can have 1 UV-C User Station and up to 24 UV-C Clearance Pushbuttons connected to it



UV-C User Station

- An information center and user interface to the UV-C Control System
- Houses a keyed activation switch to ensure only authorized personnel can operate the system
- Three LED indicators
- ON/OFF selector switch



UV-C Magnetic Access Sensor

- Composed of an actuator and read head
- Ensures all doors, windows, and other access points are closed
- To be activated, all of these sensors must be in the closed position
- Opening a door or window will stop the UV-C session



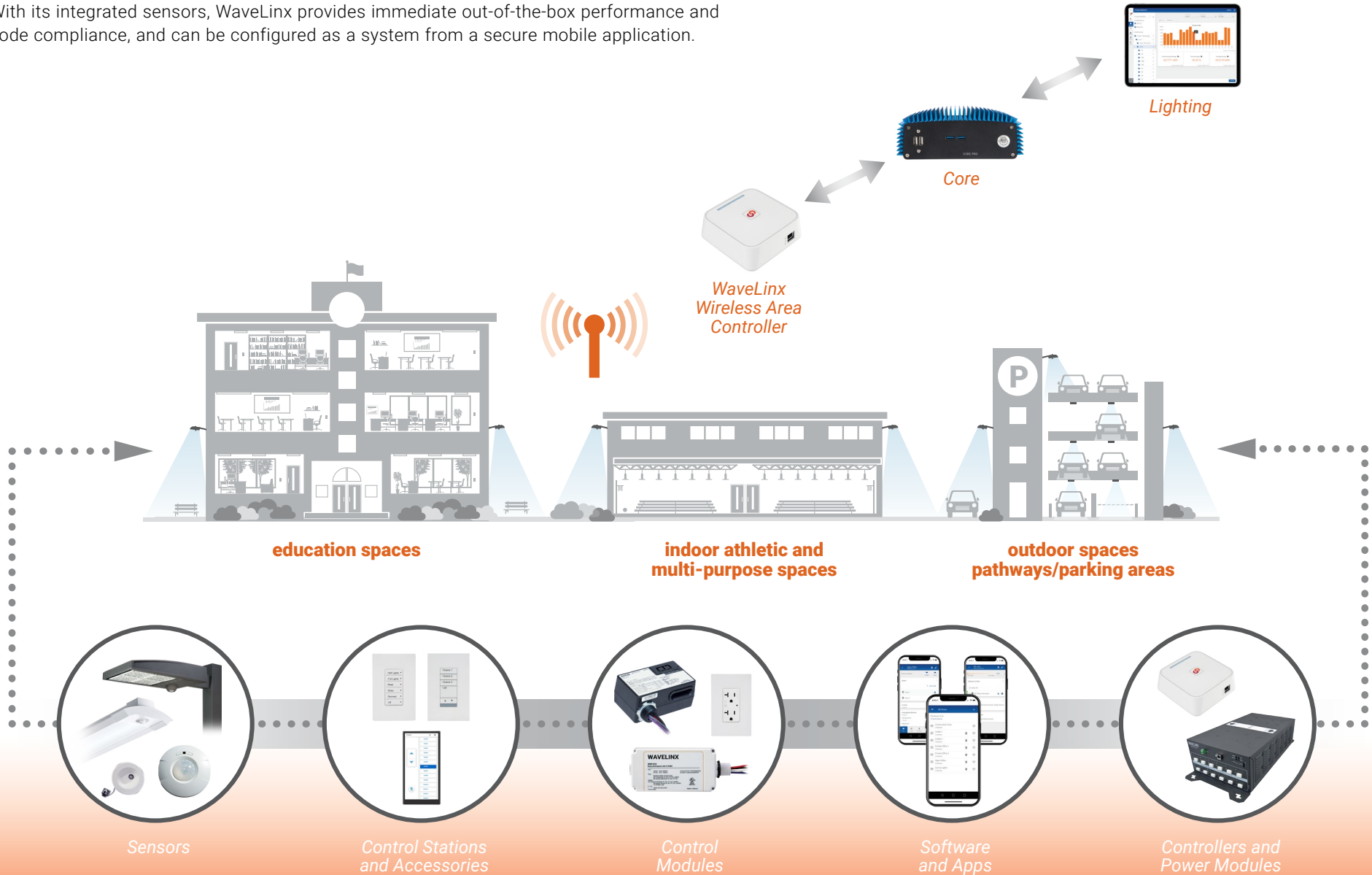
UV-C Clearance Pushbutton

- Used to verify that no one is within the space prior to the UV-C session
- Pushbutton will light up when the button is pressed letting the user know it is active

Connected lighting

The right lighting at the right time. Good for students and your bottom line.

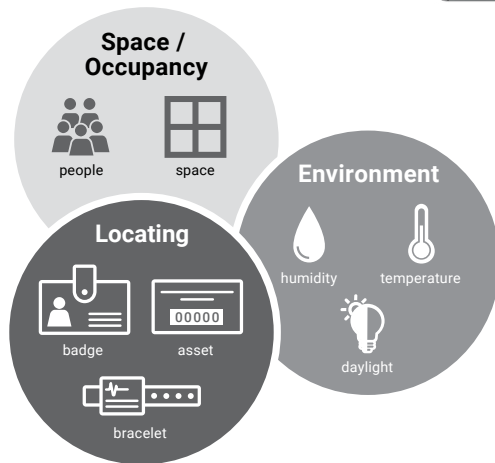
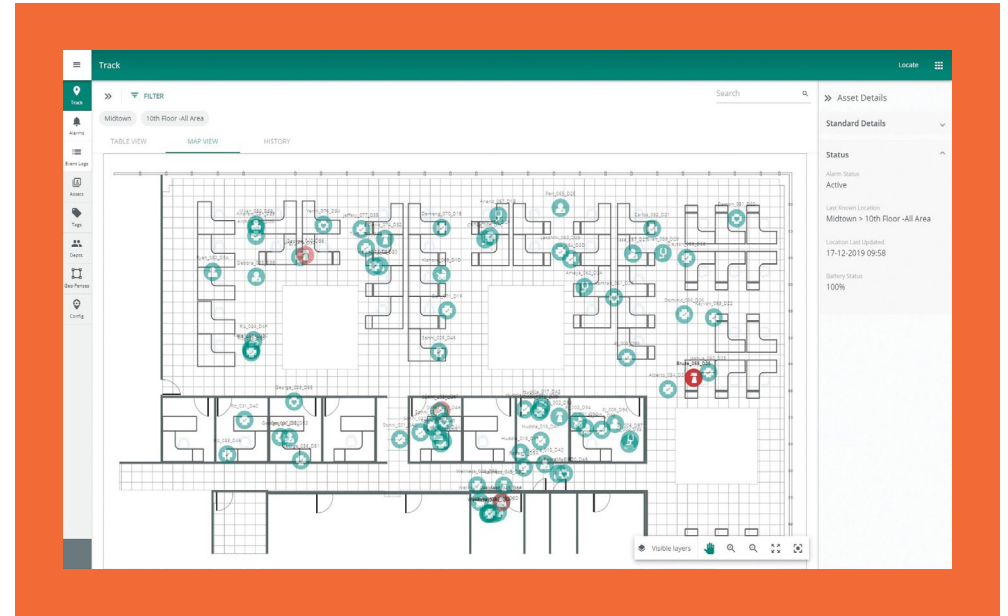
Our WaveLinX connected system provides you with complete control over your lighting solutions, so you can optimize the student benefits – and energy savings – of your lighting system. With its integrated sensors, WaveLinX provides immediate out-of-the-box performance and code compliance, and can be configured as a system from a secure mobile application.



Smart Spaces platform and apps

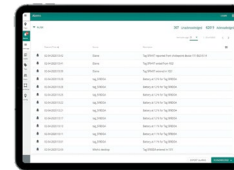
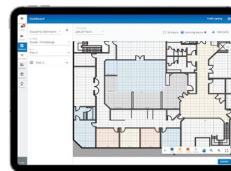
Digitalization – with our smart spaces platform and apps – allows you to analyze facility data in real time, then put it to work with a suite of education-minded applications that improve efficiency, enhance occupant experience, and promote wellbeing.

Valuable real-time facility data and ready-to-use tools are at your fingertips.



Sensing and Locating

The WaveLinX sensor and transmission network are optimally positioned to collect facility data.



OPTIMIZED facilities

- Increased productivity
- Improved safety and security
- Better asset utilization
- Data-informed business decisions
- Maintenance and operational savings
- Real-time device status

Platform and Applications

Leveraging BACnet and APIs (REST), Cooper Lighting Solutions empowers you to put your data to work.

Lighting for a brighter tomorrow:

The right lighting can help each space better serve students

Metalux - Perceive

From lobbies, to classrooms, to indoor athletics and the parking lot, Cooper Lighting Solutions offers the lighting fixtures and connected solutions that meet the individual needs of the widely varied spaces of a school campus.

Click on key areas
to learn more



Key Areas

Classroom

Cafetorium & Multi-purpose

Theater & Auditorium

Library

Higher Education

Hallway & Stairway

Administration & Office

Exit & Emergency

Natatorium

Indoor Athletic

Outdoor Athletic

Campus Pedestrian Space

Walkways & Building Exterior

Parking

Incentives

Find your utility incentive for Cooper Lighting Solutions energy products listed on the DesignLights Consortium and ENERGY STAR Qualified Product Lists. We also offer Buy American Act (BAA) and Trade American Act (TAA) compliant products.



Classroom

Space Overview

Classrooms and other learning environments should foster student engagement and improve academic performance. Traditional fluorescent lighting generates glare that can lead to eye strain, visual fatigue, and headaches. LEDs can be combined with color tuning and daylight harvesting, for example, to support learning and help decrease students' stress levels.

Design Features

Fixtures

- Troffer, cylinders, adjustable, track, multi-Head, and linear
- Variety of shapes, sizes, textures, and colors to complement any design
- Exit & Emergency: options include edge-lit exit signs and EBPs installed in luminaires

Light Quality

- Tunable color temperature 2700K-6500K (VividTune)
- Recommended 80 or 90 CRI

Light Level

- 50Fc, 500Lx

Solutions

- WaveLinX
- DLVP
- VividTune
- MWS - Modular Wiring Systems
- Fifth Light
- UV-C



Featured Products

Click on products
to learn more

LIGHTING



Corelite Discreet

- Sleek architectural design and quality to meet the needs of general educational environments
- Low glare illumination with precision-engineered optical system
- Black (UGR less than 6) and White (UGR less than 13) baffle options
- Wide range of direct/indirect distributions plus independent up/down circuiting



Metalux FPX

- Meet the needs of both new construction and renovation projects
- Versatile, low-profile design
- Streamline code compliance
- Enable smart spaces integration with a variety of integrated control and emergency battery pack options



Metalux Cruze

- Latch-less design provides clean architectural look
- Ribbed, smooth, square and round perforated lens options
- Integrated sensor systems – occupancy, daylight, and smart spaces connectivity

TECHNOLOGY & CONTROLS SOLUTIONS



VividTune Technology

- Tunable white solutions from warm to cool white
- Achieve the right color temperature and light intensity
- Balance circadian rhythms as well provide the best lighting for improved student experience



WaveLinX Wallstation

- Multi-scene selection: Scene, Raise/Lower, Toggle On/Off
- Clean, elegant, and simple way to control lighting
- Settings programmable through software, no physical adjustments needed



Greengate Room Controller

- Code compliant automatic lighting, emergency & plug load control
- Click & Go ready, RJ45 connections
- Preconfigured for automatic functionality upon power-up
- Manual or automatic on, bi-level, trilevel, and dimming control
- Integral demand response input with four levels of energy reduction

Cafetorium & Multi-purpose

Space Overview

The lighting in cafeterias and other multi-purpose spaces has to be adaptable. Because a cafeteria may also serve as a school dance venue, PTA meeting room, and emergency shelter during an extreme weather event.

Design Features

Fixtures

- Downlights, cylinders, adjustable, track, multi-head, linear, acoustic, troffer, and decorative
- Variety of shapes, sizes, textures, and colors to complement any design
- Exit & Emergency: options include die-cast exit signs and EBPs installed in luminaires

Light Quality

- Precision optics maximize uniformity and glare control
- Fixed color temperature 3500K (recommended) and 4000K

Light Level

- 30Fc, 300Lx

Solutions

- WaveLinx
- Fifth Light
- MWS - Modular Wiring Systems
- UV-C



Featured Products

Click on products to learn more

LIGHTING



Shaper Sense Drum Duo

- Acoustic lighting with industry-leading noise reduction coefficient
- Comes in 4 different styles, with various texture and design pattern options
- Substrate material can be steam-cleaned up to 200°F ensuring that bacteria and viruses don't live on these surfaces



Corelite Discreet

- Sleek architectural design and quality to meet the needs of general educational environments
- Low glare illumination with precision-engineered optical system
- Black (UGR less than 6) and White (UGR less than 13) baffle options
- Wide range of direct/indirect distributions plus independent up/down circuiting



Portfolio LD4

- LED 4" Round Recessed Downlight or lensed wall wash
- W2N Tunable White 2700K-6500K or 2000K-5000K
- Lumens: 1,000-6,000; 0-10V dimming down to 1%
- WaveLinx and DLVP connected lighting systems compatibility

TECHNOLOGY & CONTROLS SOLUTIONS



Locate Tags

- Ideal for asset management, enhanced student security, workflows, and staff duress and infection prevention
- Multiple form factors
- Long battery life



Field Selectable Technology

- Choose from a range of color temperatures and/or lumens with a simple slide on the product.
- Multiple products in one, saving money by carrying less inventory



MWS Modular Wiring Systems

- No bending, cutting, or assembly is needed
- Reduce construction cycle time with less labor and faster installation
- Easily configure the system for future additions and renovations
- Saves an average of 50% off labor and project expenses



Theater & Auditorium

Space Overview

Theater and auditorium lighting must be flexible enough to accommodate a range of events. Moreover, the controls should be intuitive enough for staff or students to operate with minimal training.

Design Features

Fixtures

- Cylinders, downlights, recessed, adjustable, and decorative complement any design
- Exit & Emergency: options include black exit signs and EBPs installed in luminaires

Light Quality

- Functional lighting uniformity for theater, room, and stage benefits staff and visitors
- Low-glare side and wall lighting add to safety and overall ambiance
- Variable light levels are achieved via switching or dimming
- D2W dim to warm color tuning (recommended)
- 3500K or 4000K fixed color temperature

Light Level

- 30Fc, 300Lx

Solutions

- WaveLinX
- DMX solutions with WaveLinX Wired
- VividTune
- UV-C

Featured Products

Click on products
to learn more

LIGHTING



Portfolio LER6/LESQ6 Cylinders

- Designed with a two-stage optical system producing smooth distribution with excellent light control and low aperture brightness
- 6 color temperatures from 2400K to 5000K CCT, Tunable White
- 0-10V dimming down to 1% option
- Round and square forms
- DMX control



HALO Commercial HCC4, HCC6, HCC8

- Distributions include precision-formed reflectors in Narrow, Medium and Wide
- Wall wash distribution includes exclusive rotatable linear spread lens
- Lumens: 500-6,000
- 0-10V analog dimming down to 1%



Neo-Ray Define

- Gain precision and flexibility with 2", 3", 4", and 5" widths, specifiable to the nearest inch
- Removable flush or drop satin lens design allows staff to easily clean and wipe down
- Precision trims accommodate a variety of ceiling types

TECHNOLOGY & CONTROLS SOLUTIONS



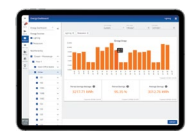
WaveLinX Wired Wallstation

- Easily reprogram the system to accommodate changes within your flexible spaces
- Adapt room light levels and energy savings based on occupancy
- Enhance occupant experiences as data is shared with other systems for ventilation and shade control



Fail-Safe GAW

- Germicidal UV Air Wall Mount
- Air sanitation fixture with UL 1598 listing
- Provides air sanitation for large areas of coverage
- Horizontal distribution keeps UV-C in the upper air
- Can be used in occupied spaces



Lighting App

- Get insights about your spaces' occupancy and energy usage
- Manage recurring light schedules for your buildings
- Use your computer, smartphone or tablet

Library

Space Overview

Library lighting should include shelf lighting that helps students find the books they need. It should also create a comfortable atmosphere that's conducive to reading and working. Incorporating daylight contributes to creating a pleasant environment as well as saves energy.

Design Features

Fixtures

- Downlights, suspended, cylinders, adjustable, track, multi-head, linear, acoustic, troffer, and decorative
- Variety of shapes, sizes, textures, and colors to complement any design
- Exit & Emergency: options include EUX edge-lit exit signs and EBPs installed in luminaires

Light Quality

- Precision optics maximize uniformity
- Tunable color temperature 2700K-6500K (VividTune)

Light Level

- 30Fc, 300Lx


Solutions

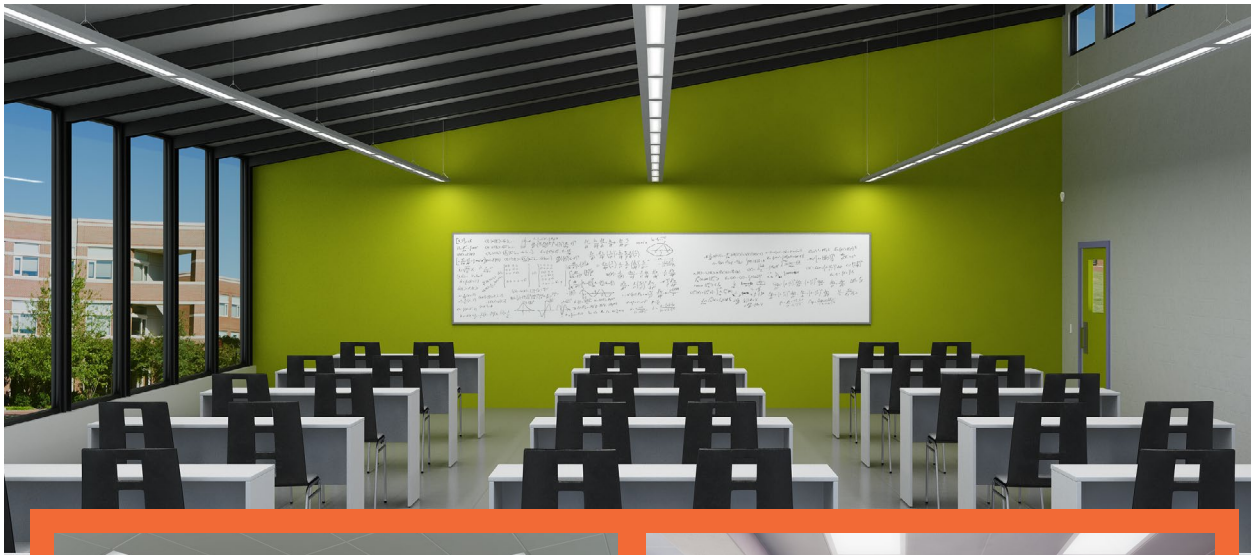
- WaveLinx
- MWS - Modular Wiring Systems
- 3D Printing Technology
- UV-C



Featured Products

Click on products
to learn more

LIGHTING	 <p>Corelite Continua</p> <ul style="list-style-type: none"> • Available in 4', 8', 12', and continuous runs • Continuous line of light via single-piece luminous roll lens • 500 to 1,500 delivered lumens per foot • Multiple lumen packages with efficacies up to 147 lumens per watt 	 <p>Corelite SQ4</p> <ul style="list-style-type: none"> • Available in 2', 4', 6', 8', 12', and continuous runs • Continuous line of light via single-piece luminous roll lens • 450 to 3,700 delivered lumens per foot • Perceive Technology includes 5 differentiated lens aesthetics: PARAmid, Prism, Waves, Ripple, and Honeycomb 	 <p>HALO Commercial HC6</p> <ul style="list-style-type: none"> • Distributions include precision-formed reflectors in Narrow, Medium, and Wide • Wall wash distribution with exclusive rotatable linear spread lens • Lumens 500-6,000 • Universal Voltage 120V-277V; 0-10V analog dimming down to 1% 	 <p>Shaper 845 Loop Series</p> <ul style="list-style-type: none"> • Decorative and high-performing acrylic and metal pendant • 2 fixture sizes, 27" and 36" ceiling pendant mount • 6 standard painted metallic finishes and custom color available 	 <p>Shaper Sense Box</p> <ul style="list-style-type: none"> • Acoustic lighting with industry-leading noise reduction coefficient • Comes in 4 different styles, with various color, texture, and pattern options. • Substrate material can be steam-cleaned up to 200°F ensuring that bacteria and viruses don't live on these surfaces 	<div>TECHNOLOGY & CONTROLS SOLUTIONS</div>  <p>Fail-Safe GAC</p> <ul style="list-style-type: none"> • Germicidal UV Air Ceiling Mount • Air sanitation fixture with UL 1598 listing • Symmetrical coverage area • Horizontal distribution keeps UV-C in upper air • Can be used in occupied spaces
----------	--	---	--	--	---	---



Higher Education

Space Overview

Networked lighting controls are helping colleges and universities better serve their students while also containing costs and conserving energy. Today's connected LED-based lighting systems can include sensors and controllers that allow the devices to even collect and process data.

Design Features

Fixtures

- Cylinders, troffers, suspended, adjustable, track, Multi-head, and linear
- Exit & Emergency: options include EUX edge-lit series and inverters for emergency lighting

Light Quality

- Elevated light levels at the tables
- Multiple color temperature and lumen options
- Fixed color temperature 3500K (recommended) and 4000K
- Recommended 80 or 90 CRI

Light Level

- 50Fc, 500Lx

Solutions

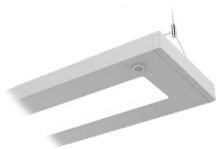
- WaveLinx
- Fifth Light
- DLVP
- D2W
- VividTune
- UV-C



Featured Products

Click on products
to learn more

LIGHTING



Corelite Jaylum

- Architectural design and quality
- Highly efficient LED
- Wide array of distribution options with J2 and J3 series
- Multiple lumen packages (up to 127 lumen per watt)
- Individual or continuous mounting
- Integral emergency battery packs available



Metalux CGTS

- Selectable lumens with Low, Medium, and High settings from 2500-6800 lumens
- Selectable CCT offered in 3500K, 400K, and 5000K settings
- Shallow, less than 2" fixture height, ideal for shallow plenums
- Minimalist design for visual aesthetics



HALO - 808 HP LED Flatback Track Luminaire

- Lumens 1,300 and 1,800 (3") and 3,000 (4")
- 3 field-interchangeable optics (spot, narrow flood, and flood)
- Holds 2 pieces of standard 2" MR16 media filters or lenses
- Smooth dimming down to 5% at 120V

TECHNOLOGY & CONTROLS SOLUTIONS



Locate App

- Quickly locate people in case of emergency
- View real-time location and movement of assets with map visualization
- Use real-time location APIs to exchange data with 3rd-party solutions



Shaper 3D Printing Pentalux

- 3D printed products ranging from 8"x8"x8" to 17"x17"x17"
- 16 or 18 neutral color options and 3 inner and 3 outer textures
- Lumen output ranges from 1000-7000



WaveLinx Dimming Switchpack

- Output control loads up to 20 amps or 1.5 HP and 0-10V dimming control with easy junction box mounting
- Universal voltage input (120V-347V)
- Models for normal and emergency (UL924) compliant applications

Hallway & Stairway

Space Overview

Lighting in hallways and stairwells should be bright enough to feel safe and comfortable and to make a quick evacuation during an emergency possible. With the addition of sensors, the lighting in hallways and stairwells can also conserve energy by dimming when no people are present.

Design Features

Fixtures

- Linear, surface, suspended, and recessed
- Exit & Emergency: options include die-cast exit signs and EBPs installed in luminaires

Light Quality

- Precision optics maximize uniformity
- Fixed color temperature 3000K, 3500K (recommended)

Light Level

- 10Fc, 100Lx

Solutions

- WaveLinx
- Fifth Light
- D2W
- DLVP
- MWS - Modular Wiring Systems
- UV-C



Featured Products

Click on products
to learn more

LIGHTING



Metalux RBG

- 4" aperture, 6" grid width provides sleek lines of light
- 2', 4', and 8' sizes available
- Switch tamper cover included
- High-performance efficacy up to 115 lumens per watt
- Flexible with recessed, drywall, surface, and suspension mount



Metalux NWS

- Offered in 2' and 4' lengths at 2 1/8" depth
- Selectable CCT in 3500K, 4000K, 5000K at 80 CRI
- 0-10V dimming with 120-277V (UNV) standard
- Suitable for ceiling, wall, or suspension mounting



Metalux SWLED

- 4' and 2' product configurations for mounting versatility
- Standard 0-10V driver with optional DALI, 1%, and step dimming options
- Available with 80 CRI and three CCT: 3500K, 4000K, 5000K
- Ideal for surface, suspended, and wall applications



Metalux Perceive

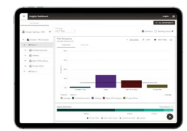
- Uses patent pending Perceive™ Technology based on cognitive science
- Efficacy up to 137 lumens per watt
- 80CRI and 90CRI options in 3000K, 3500K, 4000K, 5000K CCT
- Available in 2x2, 2x4, and 1x4 sizes

TECHNOLOGY & CONTROLS SOLUTIONS



WaveLinx Integrated Sensors

- For indoor ambient, outdoor, and industrial luminaires
- Sensing, daylighting, and wireless
- Out-of-the-box functionality



Insights App

- Ready-to-use space occupancy dashboards and reports
- Space occupancy trends and comparison
- Real-time occupancy status



Administration & Office

Space Overview

Lighting can help employees focus and improve their productivity. It sets the tone and mood of the area. Human-centric lighting can make a meaningful difference in the health and wellbeing of employees.

Design Features

Fixtures

- Downlights, adjustable, track, multi-head, linear, troffer, and decorative
- Variety of shapes, sizes, textures, and colors are available to complement any design
- Exit & Emergency: options include edge-lit exit signs and EBPs installed in luminaires

Light Quality

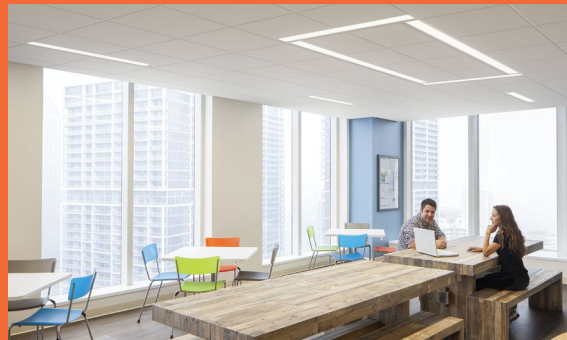
- Precision optics maximize uniformity
- High CRI lighting for wall decoration and frames
- Fixed color temperature 3500K (recommended) and 4000K

Light Level

- 50Fc, 500Lx

Solutions

- WaveLinX
- Fifth Light
- D2W
- DLVP
- MWS - Modular Wiring Systems
- UV-C



Featured Products

Click on products to learn more

LIGHTING



Metalux Cruze

- Latch-less design provides clean architectural look
- Ribbed, smooth, square, and round perforated lens options
- Integrated sensor systems includes occupancy, daylight, and smart spaces connectivity



Metalux RBG

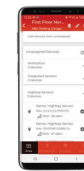
- 4" aperture, 6" grid width providing sleek lines of light
- 2', 4', and 8' sizes available
- Switch tamper cover included
- High-performance efficacy up to 115 lumens per watt
- Flexible, with recessed, drywall, surface, and suspension mount



HALO Commercial HC4

- Distributions include precision-formed reflectors in Narrow, Medium, and Wide
- Wall wash distribution includes exclusive rotatable linear spread lens
- Lumens 500-6,000
- Universal Voltage 120V-277V; 0-10V analog dimming down to 1%

TECHNOLOGY & CONTROLS SOLUTIONS



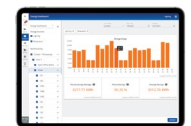
WaveLinX Lite Mobile App

- Create groups without additional hardware or IT support required for site set-up
- Empowers the installer to adjust the settings using a mobile app and Bluetooth
- Securely transfer the ownership of a system to the customer once the project is completed



WaveLinX Integrated Sensors

- For indoor ambient, outdoor, and industrial luminaires
- Sensing, daylighting, and wireless
- Out-of-the-box functionality



Lighting App

- Get insights about your spaces' occupancy and energy usage
- Manage recurring light schedules for your buildings
- Use your computer, smartphone, or tablet

Exit & Emergency

Space Overview

Life safety lighting is essential. Code compliance is legally mandatory. To help occupants find their way out of the building during an emergency or power outage, exits must be clearly marked and illuminated in accordance with requirements. During power loss, lighting is essential for illuminating classrooms and common areas and for providing continuous illumination to paths of egress from the building. Power for these applications can be provided through battery back up, inverters, or generators.

Design Features

Exit Lighting

- Size and color for code compliance
- Self-powered (battery) models have 90 minutes of emergency run time

Emergency Lighting

- Provides 90 minutes of emergency illumination when AC power fails

Solutions

- Self-diagnostic products eliminate manual testing
- Inverters provide large-scale emergency power options

Sure-Lites Compliance

- UL 924 listed, NFPA, NEC, OSHA compliant
- Battery-supplied models are Title 20 compliant



Featured Products

Click on products
to learn more

EXIT LIGHTING



Sure-Lites APX series

- High-impact thermoplastic housing
- Long-life LED illumination
- Can be configured as single- or double-face
- (APX7) No-maintenance sealed NiCad battery



Sure-Lites CX series

- Die-cast aluminum housing
- Field configurable red or green LED illumination
- (CX7) No-maintenance, sealed NiCad battery
- Self-diagnostics conduct NFPA required testing
- EZ-Key battery disconnects for install



Sure-Lites UX series

- Wet location, IP66, NEMA 4X-rated
- Die-cast aluminum housing, vandal-proof shield
- Field configurable red or green LED illumination
- (UX7) No-maintenance sealed NiCad battery
- Self-diagnostics conduct NFPA required testing



Sure-Lites EU series

- Edge-lit with long-life LED illumination
- Aluminum housing
- High-impact acrylic lens
- Surface and recessed mount versions
- (EUS7, EUR7) No-maintenance sealed NiCad battery



Sure-Lites EUX series

- Aluminum housing with universal mounting: standard surface, end and ceiling, recessed ceiling and wall
- High-impact acrylic lens with clear, mirror or white insert options included
- (EUX7) No-maintenance sealed NiCad battery
- Self-diagnostics conduct NFPA required testing
- EZ-Key battery disconnects for install



Achieve Full Brightness During Power Interruptions

Cooper Lighting Solutions delivers peace of mind with a complete line of life safety emergency lighting solutions that you can rely on. Our solutions are thoroughly tested to meet code compliance. They provide you with the assurance you need.

Featured Products

Click on products
to learn more

EMERGENCY LIGHTING



Sure-Lites APEL series

- Emergency egress coverage of 17ft
- UL 924 damp location listed
- High-impact thermoplastic housing
- Maintenance-free sealed NiCad battery
- Self-diagnostics conduct NFPA required testing



Sure-Lites SELD series

- Emergency egress coverage of 58ft
- UL 924 wet location, IP66, NEMA 4X, NSF Splash Zone rated
- Die-cast aluminum housing, vandal-resistant polycarbonate lens
- Maintenance-free sealed NiCad battery
- Self-diagnostics conduct NFPA required testing



Sure-Lites Inverter

- 20 watt to 50K watts of power
- Self-diagnostics conduct NFPA required testing
- Centralized emergency power source



Sure-Lites (EBP) Emergency Battery Pack

- Up to 2000 lumens per fixture
- Self-diagnostics conduct NFPA required testing
- Installs in most fixtures

CONNECTED & CONTROLS SOLUTIONS



Greengate - CEPC Emergency Power Control

- Eliminates energy waste by allowing emergency lighting to be switched
- Fail safe operation
- Visible emergency power LED
- Visible regular power LED



WaveLinx Wired - DAC Digital to Analog Converter

- Built-in latching relay and 0-10V current sinking interface
- Automatic detection of power loss for Emergency lighting control (UL924)
- Available for Class 1 or 2 configurations
- Ultra-low profile form factor
- Buy American Act requirements options

Natatorium

Space Overview

In spaces with indoor pools, the reflective properties of water require glare control strategies that are more sophisticated than usual. Because fixtures in natatoriums are difficult to access, long-life and reliability are very important to keep maintenance hours and costs at a minimum.

Design Features

Fixtures

- Architectural asymmetric and Ephesus Sports Lighting
- Variety of shapes, sizes, textures, and colors are available to complement any design
- Exit & Emergency: options include inverters, UX series signs, and SELDW60SD series emergency lighting

Light Quality

- Indirect lighting creates a more spacious feeling by illuminating the walls and ceiling rather than directly illuminating the floor
- Indirect lighting eliminates glare for swimmers, lifeguards, and spectators while improving visibility
- Precision optics maximize fixture spacing and deliver the desired illumination with the fewest number of fixtures
- Fixed-color temperatures 3500K and 4000K are recommended
- Sealed LEDs maintain lumen output and CCT over years of pool chemical exposure

Light Level

- 30Fc at water surface for recreational pools; higher values recommended for collegiate competition and broadcasting

Solutions

- WaveLinx
- UV-C
- Ephesus



Featured Products

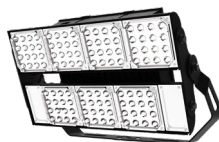
Click on products
to learn more

LIGHTING



Ametrix Asyx

- Lumen outputs from 6,000 lm to 68,000, depending upon size
- Can be used indoors, outdoors (IP66), or in natatoriums
- Standard 2700K, 3000K, 3500K, all at +80CRI, 4000K minimum 70 CRI
- AccuLED optics optimize optical distributions and fixture spacing
- Natatorium specialized protective coating on all metal components
- Natural finish option



Ephesus LumaVision 8

- White light LED luminaire
- Utilizes patented, industry-leading UV coated AccuLED Optics™ prevent yellowing and degradation over time
- Thermally managed driver and LED housing provides demonstrated reliability confidence
- Designed to last with a 90,000+ hour-rated life at greater than 90% lumen maintenance

TECHNOLOGY & CONTROLS SOLUTIONS



WaveLinx Wired Area Controller

- Modular design control panels with digital, 0-10V dimming, relay modules, bridge interface, and ethernet gateway
- Available in Small, Medium, and Large panel configurations



UV-C GSL Striplight

- Available in 4' lengths with 1 or 2 UV-C sources
- Ideal for surface mounted or suspended
- Optional wireguard to protect sources from damage
- Optional reflectors for symmetric and asymmetric control



Ephesus Wireless AirMesh Hub

- Install anywhere you need wireless, push-button control
- Five-button, pre-programmed switch provides easy control of all lights
- Five specified dimming levels: 0%, 25%, 50%, 75%, and 100%
- Hub can communicate via LAN, Wi-Fi, or through a cellular network

Indoor Athletic

Space Overview

Indoor sports facilities are typically used by several different types of sports, so the lighting has to be flexible enough to meet each sport's requirements. The spaces are large, with high ceilings, so the lighting must be bright enough to provide proper illumination. And, if there are windows, sensors can help with daylight harvesting and energy savings.

Design Features

Fixtures

- Troffer, high-bay, industrial, Fail-Safe (locker rooms), and Ephesus Sports Lighting
- Variety of shapes, sizes, textures, and colors are available to complement any design
- Exit & Emergency: options include UX series exit signs, SELDW60SD series emergency lighting, and emergency battery packs for lighting

Light Quality

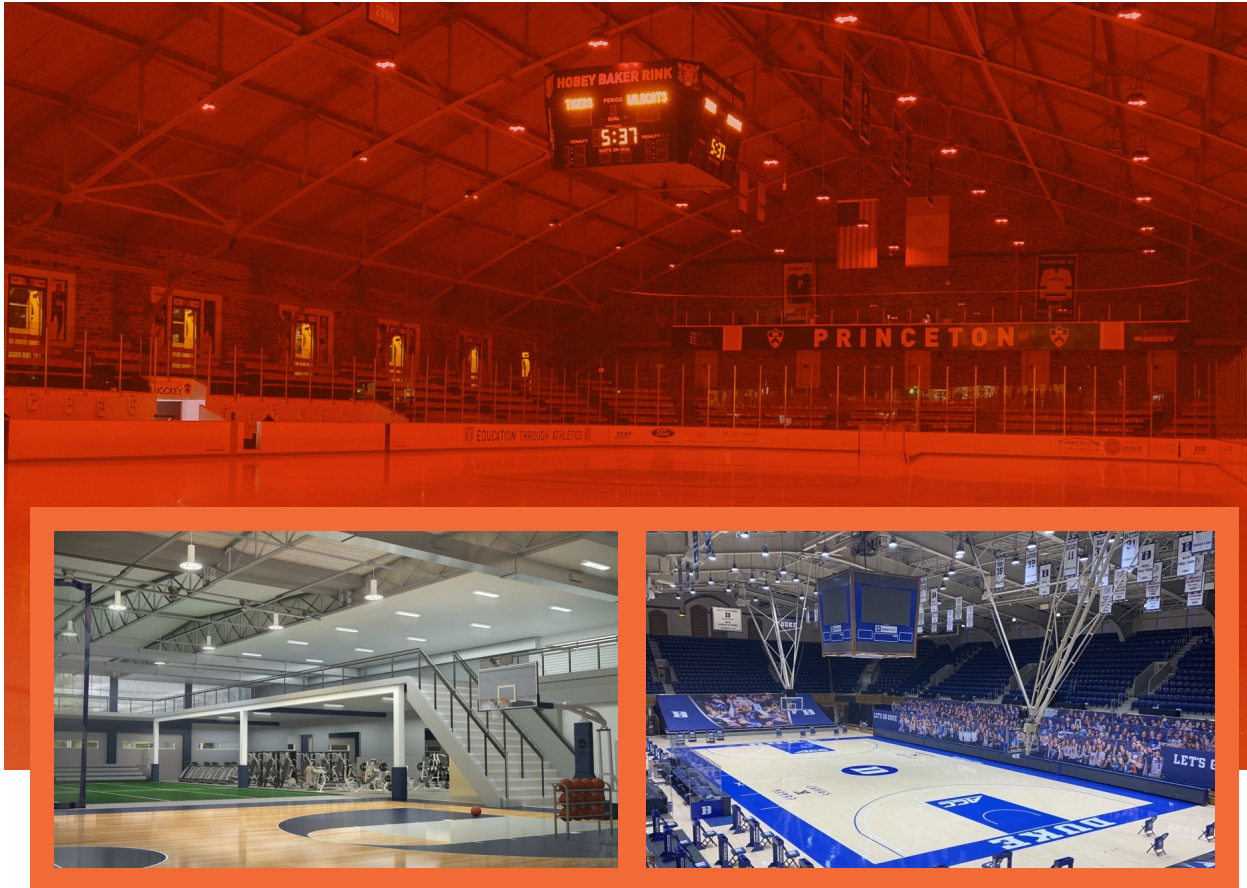
- Precision optics maximize uniformity
- Fixed color temperature 3500K and 4000K (recommended)

Light Level

- 30Fc, 300Lx

Solutions

- WaveLinx
- VividTune
- Ephesus
- Ephesus AirMesh Hub



Featured Products

Click on products
to learn more

LIGHTING



Metalux VHB High Bay

- Compact, lightweight design for ease of installation
- 5 lumen packages available (9,000, 12,000, 15,000, 18,000 and 24,000)
- High-performance efficacy up to 147 lumens per watt
- Precision optics in narrow and wide distribution
- 0-10V Dimming driver standard



Metalux Steeler High Bay

- Compact, lightweight design for ease of installation
- Available in 7 lumen packages up to 36,000 lumens
- High-performance efficacy up to 152 lumens per watt
- Industry-leading optics in Narrow, Medium, and Wide distribution
- 0-10V Dimming driver standard



Metalux HBLED High Bay

- Durable CRS and aluminum housing up to 170 LPW
- High-performance efficacy up to 170 LPW
- LEDs available in 3500K, 4000K, and 5000K at typical 85 CRI
- Rated for -40°C to 55°C ambient
- Precision optics in Narrow and Wide distribution
- Multiple lens options



Ephesus LumaSport 8

- White light LED luminaire
- Virtually eliminate maintenance and downtime with power redundancy and industry-leading light source reliability with Chip-On-Board LEDs
- Reduce installation time with pre-assembled two-piece assembly
- Wireless AirMesh or wired DMX and burst controls
- 55,000 or 90,000 lumen outputs

TECHNOLOGY & CONTROLS SOLUTIONS



WaveLinx Industrial Standalone Sensor

- Easily enable 0-10V luminaires to be controlled, 120-277VAC with 8 amp/zero cross relay
- Suitable for high bay (up to 40ft) and low bay (up to 15ft), coverage up to 5,000 square feet
- Integrated photocell for closed-loop daylight harvesting



Ephesus Wireless AirMesh Hub

- Install anywhere you need wireless, push-button control
- Five-button, pre-programmed switch provides easy control of all lights
- Five specified dimming levels: 0%, 25%, 50%, 75%, and 100%
- Hub can communicate via LAN, Wi-Fi, or through a cellular network

Outdoor Athletic

Space Overview

Outdoor sports field lighting requires special consideration for the benefits of both players and spectators. Controlling glare. Maintaining uniformity in light and shade. Minimizing spill light. LED technology puts most sports field lighting goals within reach.

Design Features

Fixtures

- Ephesus Sports Lighting White LED and RGBA LED
- Exit & Emergency: options include inverters

Light Quality

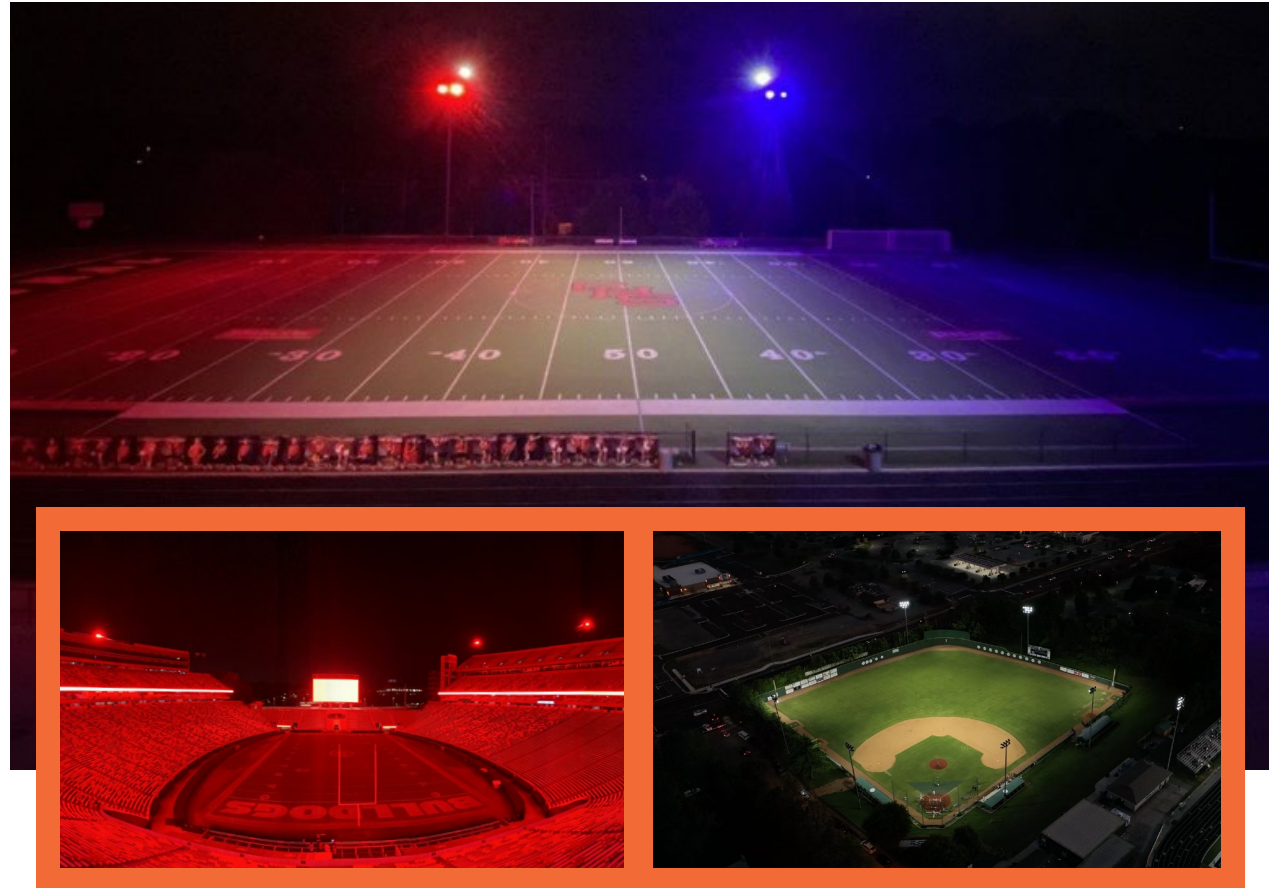
- Professional, collegiate, recreational / municipal, and K-12

Light Level

- 30Fc, 300Lx

Solutions

- Ephesus
- Ephesus AirMesh Hub
- Wireless
- Contactors



Featured Products

Click on products
to learn more

LIGHTING



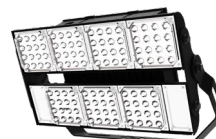
Ephesus LumaSport 16

- 150,000 lumen output
- Glare and cutoff control via reflector and lower optical system
- Reduce install time with pre-aimable two-piece assembly
- Virtually eliminate maintenance with power redundancy



Ephesus LumaSport 8

- White light LED luminaire
- Virtually eliminate maintenance and downtime with power redundancy and industry leading light source reliability with Chip-On-Board LEDs
- Reduce installation time with pre-aimable two-piece assembly
- Wireless AirMesh or wired DMX land burst controls
- 55,000 or 90,000 lumen outputs



Ephesus LumaVision 8

- White light LED luminaire
- Utilizes patented and industry leading UV coated AccuLED Optics™ that prevents yellowing and degradation over time
- Thermally managed driver and LED housing provide demonstrated reliability confidence
- Designed to last with a 90,000+ hour rated life (at greater than 90% lumen maintenance)



Ephesus Prism RGBA

- Custom-engineered optics precisely direct light while minimizing glare
- Control options provide flexibility and fan experience effects
- Rugged and weather-tight for use even in harsh environments
- Solid state design means no moving parts and maintenance-free operation

TECHNOLOGY & CONTROLS SOLUTIONS



Ephesus Wireless AirMesh Hub

- Install anywhere you need wireless, push-button control
- Five-button, preprogrammed switch provides easy control of all lights
- Five specified dimming levels: 0%, 25%, 50%, 75%, and 100%
- Hub can communicate via LAN, Wi-Fi, or through a cellular network



Sports & Entertainment Venue Spaces

We're committed to providing you with the right solution for every venue. But our work doesn't stop there. All our solutions are designed to evolve along with your needs. With advanced systems like Lumadapt 8, you can even update your system remotely, adding new features and functionality over time. These types of capabilities are why our full line of sports lighting products have been recognized for innovative design, superior efficiency, longer life, and better performance.

Stadiums | Arenas | Track & Ball fields | Diamonds | Courts | Gymnasiums | Fieldhouses & Athletic Complexes | Natatoriums

Campus Pedestrian

Space Overview

This lighting has primarily two goals: safety and security. Safety helps pedestrians and bikers see potential hazards such as uneven pavement, tree roots, and other tripping hazards. Security allows them to evaluate potential threats.

Design Features

Fixtures

- Bollard/pathway, landscape, area/site, and wall

Light Quality

- Multiple color temperature options

Solutions

- WaveLinx



Featured Products

Click on products to learn more

LIGHTING	 <p>McGraw-Edison BRT6 Bollard</p> <ul style="list-style-type: none"> • Pedestrian and Pathway luminaire • 4 optical distributions • Available in 30", 36", and 42" heights • Up to 4,400 lumens • Efficacy up to 122 lumens per watt 	 <p>Invue ARB Arbor Post Top</p> <ul style="list-style-type: none"> • Area and Site LED luminaire • Visual comfort optical configurations • Up to 9,500 lumens • Wall mount accessories available • Integrated connected and stand-alone controls 	 <p>Invue ClearCurve Wall</p> <ul style="list-style-type: none"> • Wall mount luminaire • Visual comfort and discrete optical configurations • Up to 12,000 lumens • 11 color temperature options • Integrated connected and stand-alone controls 	 <p>Invue ClearPath Bollard</p> <ul style="list-style-type: none"> • Simple yet elegant architectural form • 3 optical distributions • 3000K/80 CRI and 4000K/70 CRI available • Symmetric, asymmetric, and one-sided asymmetric distribution • 10kV/10VKA surge protection standard • 6 standard corrosion-resistant durable finishes 	TECHNOLOGY & CONTROLS SOLUTIONS	 <p>WaveLinx Outdoor Fixture Mount Sensor</p> <ul style="list-style-type: none"> • Photocell dusk-to-dawn control • Passive Infra-Red (PIR) for motion sensing • Hardware capable of Real-Time Location Services (RTLS) 	 <p>WaveStream™ Optics</p> <ul style="list-style-type: none"> • Provides visual comfort • Reduces glare • Particularly beneficial for low mounting height, pedestrian applications
----------	--	--	--	--	---------------------------------	--	---



Outdoor Walkways & Building Exterior

Space Overview

Lighting for these areas promotes safety and security for your staff and students. In addition, proper lighting provides a deterrent to theft and vandalism on your campus. Not only can lighting provide a safe environment for your staff and students, but it can also help your campus look its best with sleek and architectural designs that compliment the surroundings.

Design Features

Fixtures

- Area/site, wall mount, and bollard/pathway
- Exit & Emergency: options include die-cast emergency lights and inverters

Light Quality

- Precision optics maximize uniformity
- Multiple color temperatures

Solutions

- WaveLinX
- Telensa



Featured Products

Click on products to learn more

LIGHTING	 <p>Invue Mesa</p> <ul style="list-style-type: none"> • Wall, single, and dual-mount configurations available • Choice of 13 high-efficiency, patented AccuLED Optics™ • Stylish architectural design 	 <p>Lumark LAS Area & Site Luminaire</p> <ul style="list-style-type: none"> • 10-position lumen selectable • Twistlock NEMA photocontrol for dusk-to-dawn operation • Pole mount arm or adjustable slipfitter mounting arm included 	 <p>Lumark Prevail Petite Discrete Wall</p> <ul style="list-style-type: none"> • Low-profile, die-cast aluminum housing with full cutoff for zero uplight • Drop door for surface mounted wall installation • Optional integrated battery pack solutions for emergency egress 	 <p>Portfolio LD4 & LD6</p> <ul style="list-style-type: none"> • Narrow, Medium, and Wide distributions • Single, double, and corner wall wash • Fixed 2400-5000K or tunable white, 2000-5000K or 2700-6500K CCT • 250-12,000 delivered lumens • Supports a broad range of control and connected systems 	TECHNOLOGY & CONTROLS SOLUTIONS	 <p>Telensa</p> <ul style="list-style-type: none"> • Central Management System (CMS) for outdoor lighting • Up to 8 miles long range connectivity to base station • Revenue grade metering within <0.5% accuracy • Self-commissioning automatically connects to optimized base station • Integrated GPS plots fixture locations in management mapping system 	 <p>WaveStream™ Optics</p> <ul style="list-style-type: none"> • Provides visual comfort • Reduces glare • Particularly beneficial for low mounting-height, pedestrian applications
----------	--	--	---	---	---------------------------------	--	---

Parking

Space Overview

Parking areas are very busy spaces and it's important that students and staff can easily navigate them in a safe manner. High-performance and uniform lighting can help motorists and pedestrians identify risks, making sure both people and vehicles are easily visible, thus reducing the risk of injury.

Design Features

Fixtures

- Area/site, garage/canopy, wall mount, and pathway

Light Quality

- Precision optics maximize uniformity
- Multiple color temperatures

Solutions

- WaveLinx



Featured Products

Click on products
to learn more

LIGHTING



McGraw-Edison GALN Galleon II

- Area and Site LED luminaire
- 16 high-efficiency optical distributions
- Efficacy up to 159 lumens per watt
- Up to 73,500 lumens
- Integrated connected and stand-alone controls



Lumark Prevail Discrete Series

- Direct-mounted discrete light engine for uniformity and visual comfort
- Low profile, die-cast aluminum housing
- Versatile mount arm, with multiple drill patterns, round and square poles



McGraw-Edison TT TopTier

- Garage and canopy LED luminaire
- 5 optical distributions
- Up to 13,300 lumens
- Integrated, connected, and stand-alone controls



Lumark Axcnt LED

- Wall mount luminaire
- Inverted wall option
- Up to 17,000 lumens
- Integrated, connected, and stand-alone controls

TECHNOLOGY & CONTROLS SOLUTIONS



LumenSafe Security Camera

- Streamlined design Integrated Network Security Camera
- One-trip installation
- Flexible software integration – compatible with 3rd-party software
- Real-time, HD video surveillance
- Remote zoom and focus
- Multiple data-backhaul options – cellular, Wi-Fi, and fiber/Ethernet



WaveLinx Lite Outdoor Fixture Mount Sensor

- App-based, programmable for individual and group control
- Passive Infra-Red (PIR) for motion sensing
- Photocell dusk-to-dawn control and dimming

Why Cooper Lighting Solutions?

For more than 50 years, we've partnered with education facilities to unlock the power of lighting to improve wellbeing and sustainability while solving unique business problems. Our solutions are tailored to the complex needs of the industry, balancing application requirements with aesthetics to create spaces that are both hospitable and functional — from the parking lots and libraries, to special education classrooms and sports fields.

Our extensive luminaire portfolio includes brands that have long been trusted in Education applications, like McGraw, Metalux, and Fail-Safe. Paired with integrated sensors, the WaveLinX connected lighting system, these solutions provide a foundation for countless operational improvements through valuable facility data and insights.

Imagine having access to real-time data about your facility, assets, and occupants that not only keep people and assets secure, but can be mined to improve everything from workflows to asset utilization.

With the right lighting solution partner, these capabilities are just the beginning.



Our brands

Industry leading lighting and controls solutions



**Ametrix | AtLite | Corelite | Ephesus | Fail-Safe | Fifth Light | Greengate |
HALO Commercial | HALO | Invue | iO | IRiS | Lumark | Lumière | McGraw-Edison |
Metalux | Modular Wiring Systems (MWS) | Neo-Ray | Portfolio | RSA | Shaper |
Shaper PrentaLux | Streetworks | Sure-Lites | WaveLinX | Telensa**



Lighting Brands

Ametrix
AtLite
Corelite
Ephesus
Fail-Safe
HALO
HALO Commercial
Invue
iO
Iris
Lumark
Lumière
McGraw-Edison
Metalux
MWS
Neo-Ray
Portfolio
RSA
Shaper
Shaper PrentaLux - 3D Printed Lighting
Streetworks
Sure-Lites
Telensa

Controls Brands

Greengate
Fifth Light

Connected Lighting Systems and Smart Spaces Platform

WaveLinx



SCAN
for more
Education Solutions
information



Cooper Lighting Solutions
1121 Highway 74 South
Peachtree City, GA 30269
P: 770-486-4800
www.cooperlighting.com

Canada Sales
5925 McLaughlin Road
Mississauga, Ontario L5R 1B8
P: 905-501-3000
F: 905-501-3172

© 2023 Cooper Lighting Solutions
All Rights Reserved
Printed in USA
Publication No. BR50370422
February 2023

Cooper Lighting Solutions is a
registered trademark.

All other trademarks are property
of their respective owners.

Product availability, specifications,
and compliances are subject to
change without notice.