

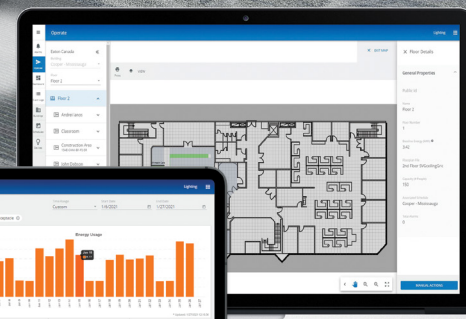
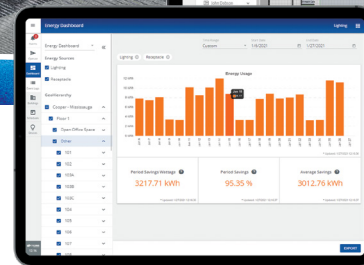
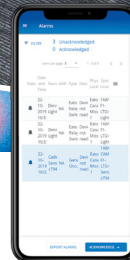


# WaveLinux CORE

Smart Spaces Platform for  
Office | Education | Healthcare

**Collect. Analyze. Exchange.**

 **COOPER**  
Lighting Solutions  
a  business



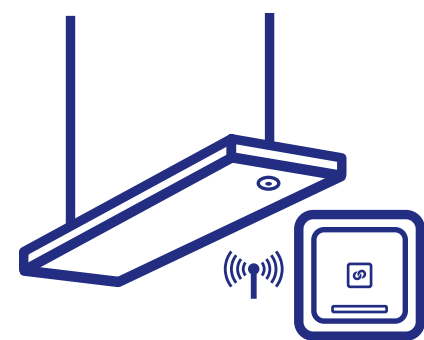
[cooperlighting.com](http://cooperlighting.com)



# WaveLinx CORE

## Collect. Analyze. Exchange.

WaveLinx is a smart spaces platform designed to help building owners improve operational efficiency, offer optimized experiences to the occupants, and create a healthy well-being environment.



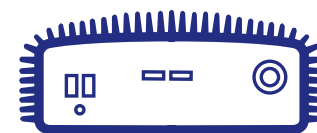
### CONNECTED LIGHTING & CONTROLS

Leverage the powerful WaveLinx PRO connected lighting infrastructure to unlock location-based services



### DATA ANALYSIS

Access real-time facility data through the secure on-premise hardware platform and put it to work using WaveLinx Smart Spaces applications



### DATA EXCHANGED

Use our APIs to integrate with a myriad of programs and harness your facility data in countless ways

## Smart Spaces Platform

No building infrastructure is better positioned to collect valuable data than your lighting system.

WaveLinx CORE collects and analyzes the real-time data to provide actionable information that is used to improve operational efficiency, enhance occupant experience and promote wellbeing.





# YOUR DIGITAL TRANSFORMATION STARTS HERE

## A Powerful Answer to Complex Challenges

Propel your operations into the here-and-now and stay on the leading edge. WaveLinX CORE is an investment that helps you not only modernize, but future-ready your facility.

### Operational Efficiency



**Energy Savings**  
Reduce energy consumption in underutilized areas



**Real-Time Notifications**  
Proactively manage equipment and device health



**Workplace Optimization**  
Monitor occupancy to improve space usage



**Real-Time Locating System (RTLS)**  
Improve security and efficiency by locating people and assets

### Occupant Experience



**Workspace Environment**  
Allow occupants to personalize lighting and more



**Enhanced Security**  
Detect intrusions by sending real-time data to your security system



**Space Management**  
Streamline conference room booking with apps and digital signage



**Tenant Experience**  
Help tenants connect to the spaces and services offered in a facility

# UNLOCK THE POWER OF REAL-TIME DATA

WaveLinX CORE transforms the WaveLinX PRO wireless connected lighting system into an open IoT infrastructure, allowing facilities to harness the data collected from integrated sensors for countless operational improvements — from saving energy to tracking equipment and assets. WaveLinX CORE also integrates seamlessly with a host of third-party applications, making potential use cases virtually limitless.

## Cybersecurity Listed Networked Lighting Controls

**WaveLinX CORE Pro, Enterprise and Virtual are IEC 62443-2 certified.**

*Certifications have been independently performed by Dekra, an IEC accredited cybersecurity lab.*





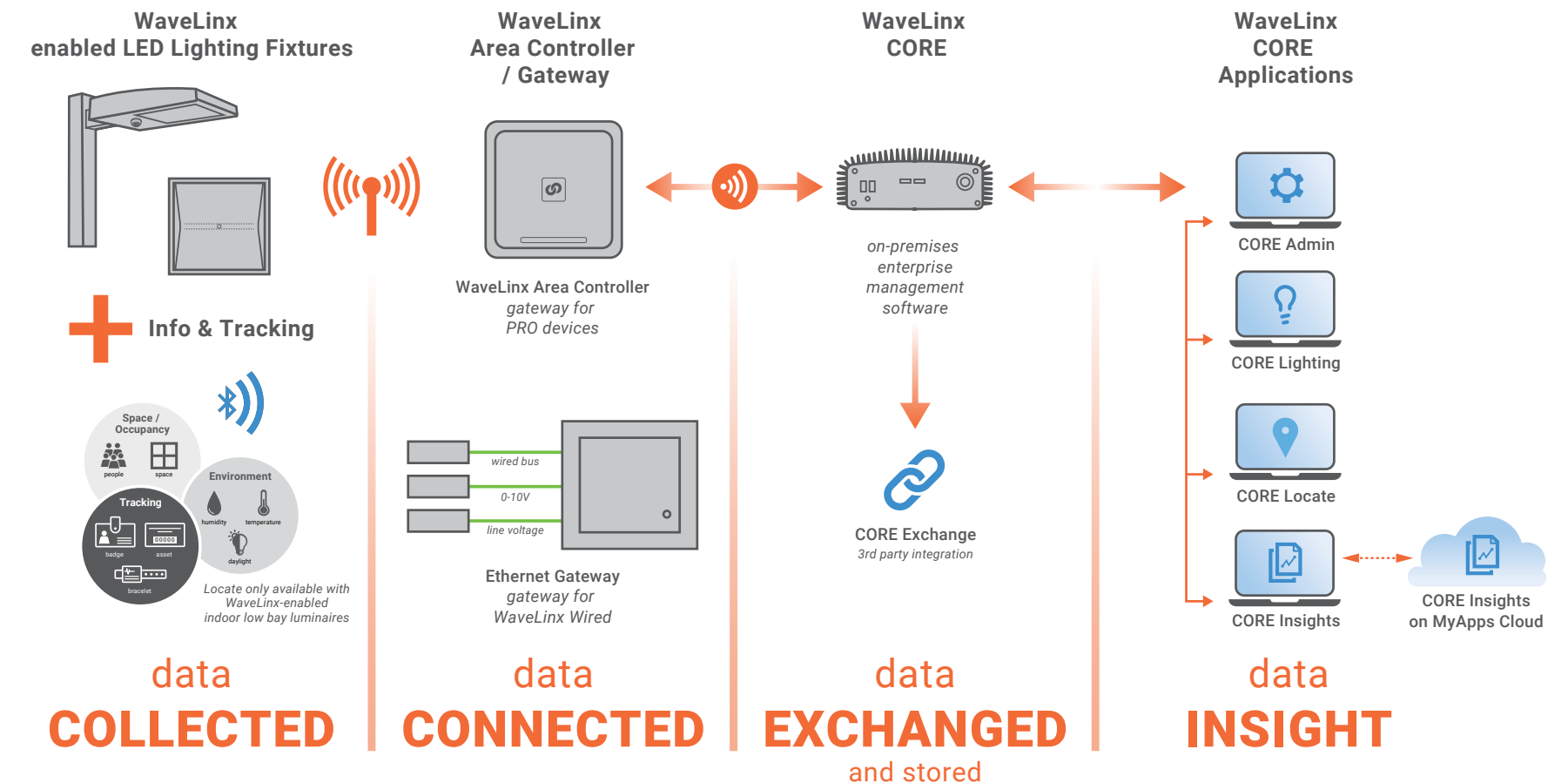
# COLLECT

- It takes many interconnected features to create a **secure, flexible, highly-functional smart spaces platform.**

WaveLinX CORE is an on-premises IoT appliance used for lighting devices management, data collection, processing and visualization for your smart space solution.

CORE edge offers a robust set of tools, applications and microservices including:

- Data visualization
- Device registry and management
- Data aggregation and data management
- Connectivity and message routing
- Event management
- User management
- Data security







# ANALYZE

With WaveLinX CORE, powerful information is at your fingertips and ready to use.

**Put your data to work with built-in applications:**

*For more information on the CORE apps, see pages 10-13*

## CORE Admin

Manage systems, users, licenses, and more

## CORE Lighting

Take control of your lighting to create energy-efficient spaces

## CORE Locate

Locate assets in real-time and analyze their movements

## CORE Insights

Monitor space usage to increase workplace effectiveness.



# EXCHANGE

WaveLinX CORE enables data exchange with third party system via industry standard IoT protocols and building automation interfaces. Developer and system integrators can use these interfaces to readily access the valuable data generated by the connected luminaires and the sensors.

## BACnet® / IP Interface

Enables the integration between the WaveLinX PRO systems and any BACnet compatible Building Automation System (BAS).

## Public (REST) API

Provides a secure programming interface that enables third-party IoT platforms to take control of WaveLinX PRO's connected devices.

## OpenADR Interface

Allows WaveLinX PRO users to take advantage of utility company incentives by automating Demand Response participation.

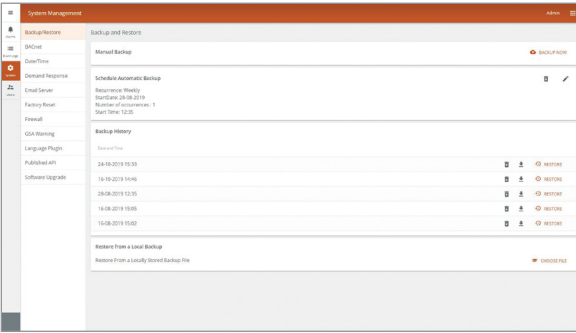
● **Leverage the data**  
gathered by WaveLinX CORE





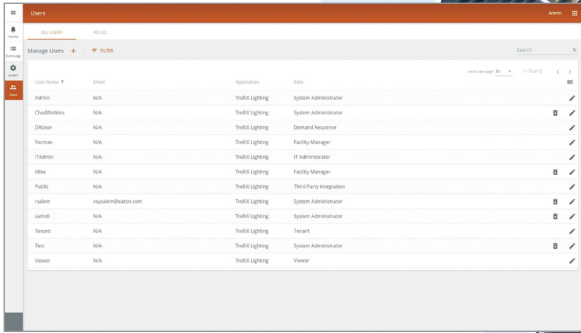
# CORE ADMIN

Manage the core components and microservices required for a fully functional smart spaces platform.



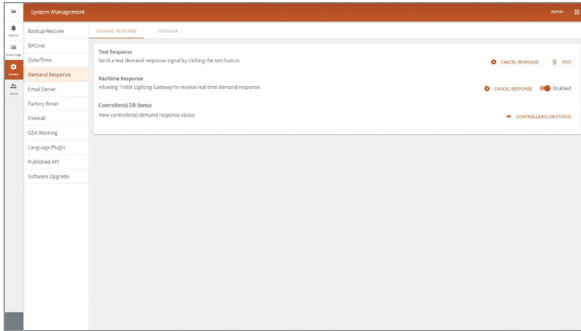
## Systems

Perform system back-ups, restore OS/services, manage your email server, and access firewall and interface settings – all from one location.



## Users

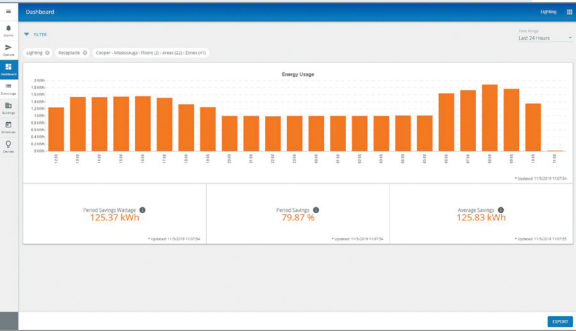
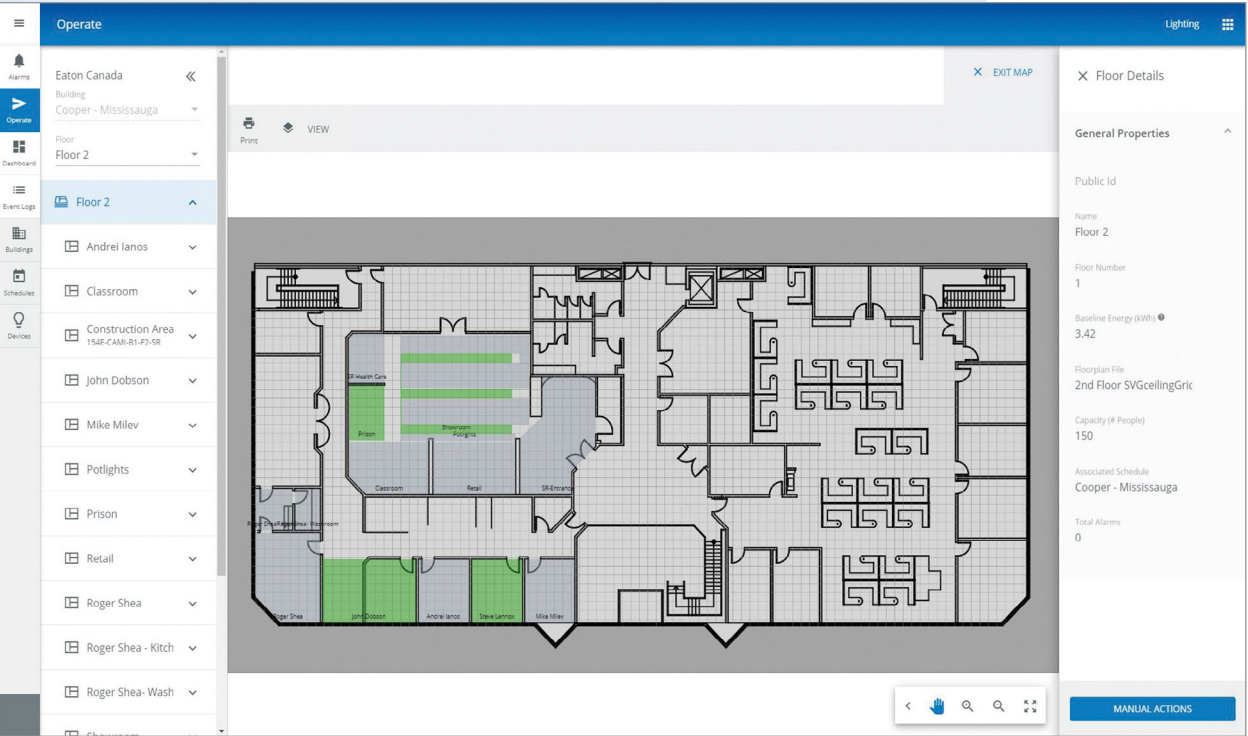
Manage user accounts, responsibility “zones” within the building, roles, and application permissions.



## Demand Response

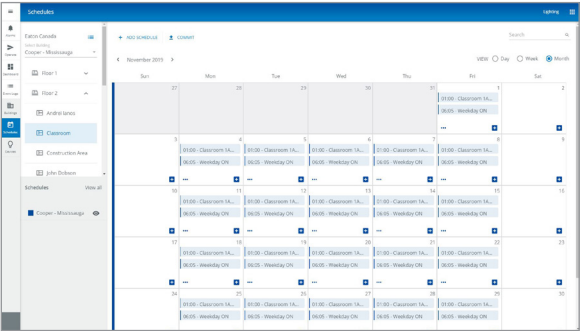
Take advantage of utility company incentives by participating in ongoing Demand Response (DR) programs.

## Manage multiple applications with CORE Admin.



## Streamlined Control

From one fixture to the entire building, lighting control is at your fingertips. Monitor devices, update dimming schedules, send light control commands, and much more.



## Schedules

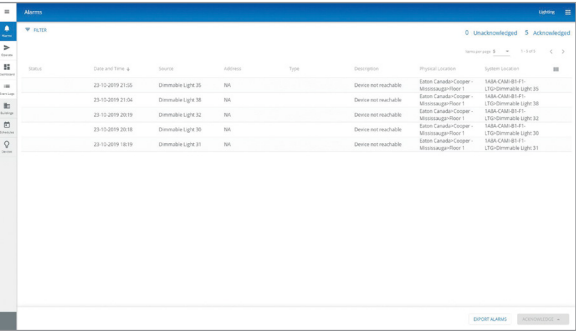
An intuitive scheduling interface lets you manage lighting and controlled receptacle schedules for one or more buildings, all from a central location.

# CORE LIGHTING

Take complete control of your lighting across multiple floors, buildings, and even multiple sites to save energy and ensure code compliance.

## Energy Dashboard

Robust historical data lets you visualize energy usage and identify areas for improvement using historical data.



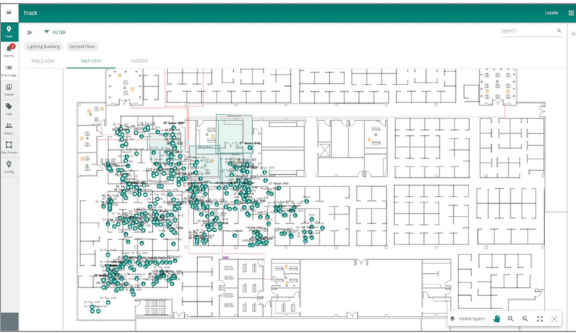
## Alarms and Events with Smart Tips

Receive alerts about outages and other system issues to minimize disruptions, automate routine health system checks, and get time-saving “Smart Tips.”



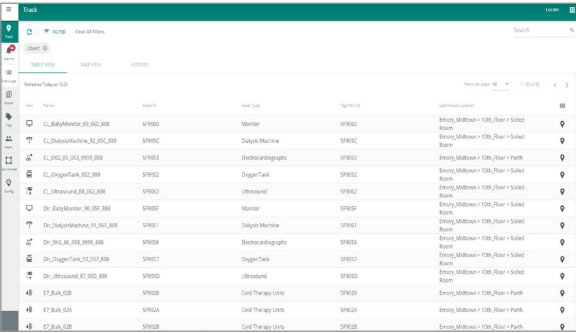
# CORE LOCATE

Monitor people, assets, and environments with precision using sensing and beacon technology and a powerful, user-friendly app.



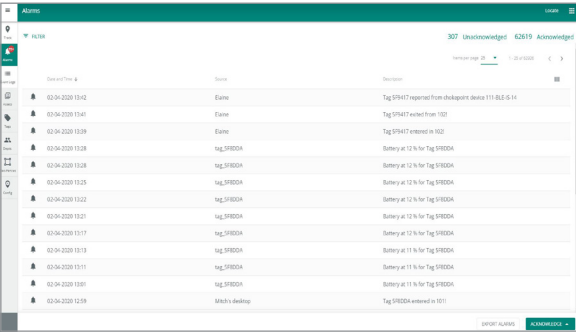
## Monitor, Track and Manage

Interactive maps and tables with rich search features allow users to locate assets or people quickly and view their status and conditions in real-time.



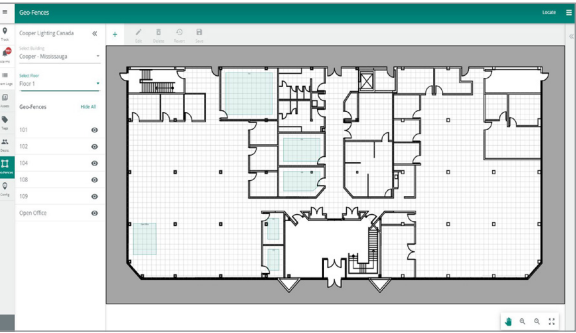
## Asset Tracking

With a map or tabular view, you can pinpoint assets’ exact locations in your building and drastically reduce time spent searching for them (by 90%).



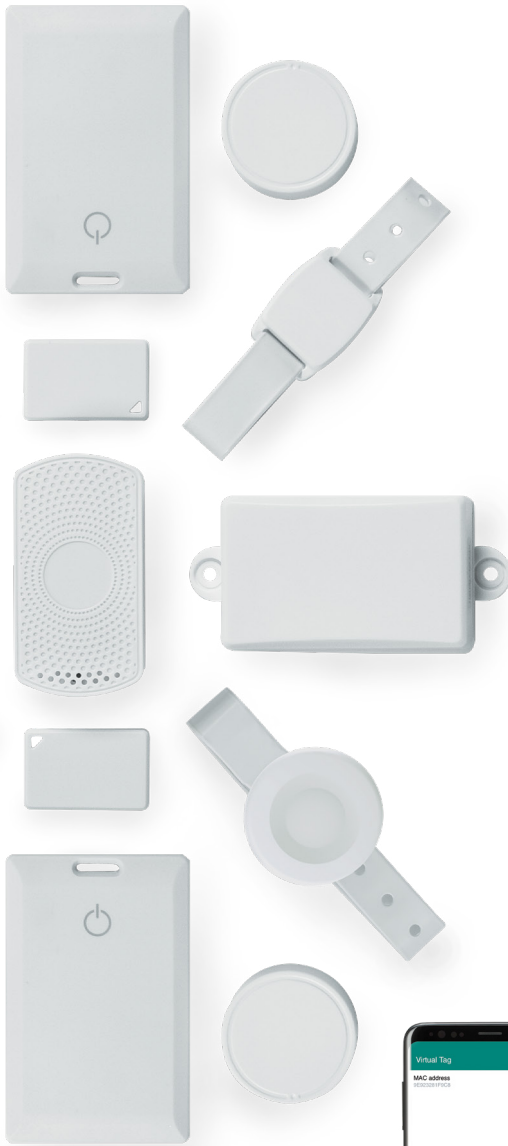
## Alarms

Set custom business rules to get instant alerts when something needs your attention—like a person in an unauthorized area or a temperature exceeding the limit.



## Geofencing

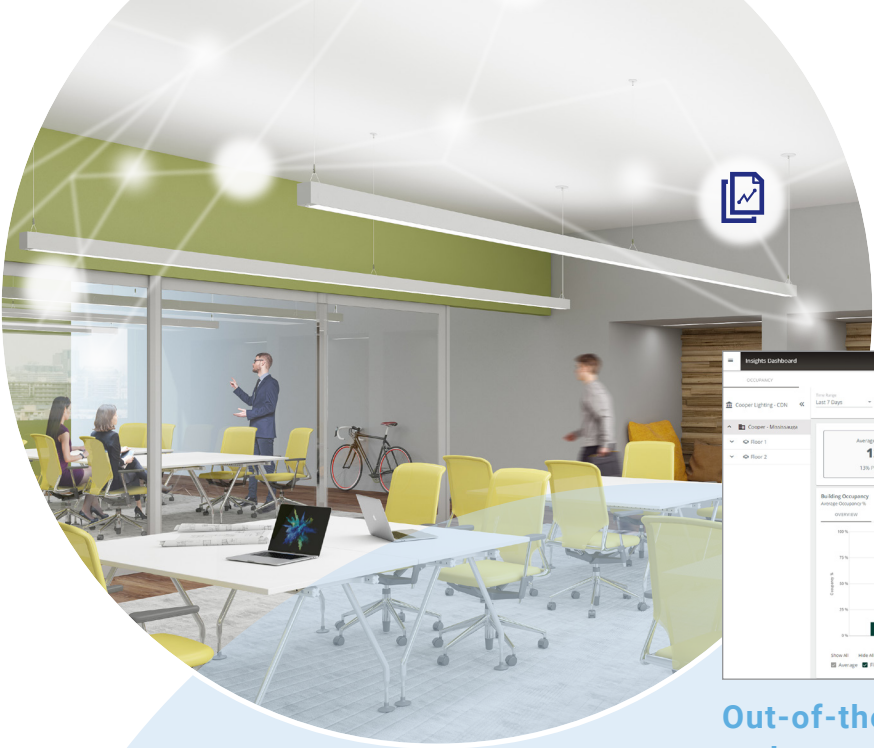
Create virtual boundaries (“geofences”) on your floor plan to set location-based rules and alerts.



For a complete list of CORE Locate Asset Tags, see: [www.cooperlighting.com](http://www.cooperlighting.com)

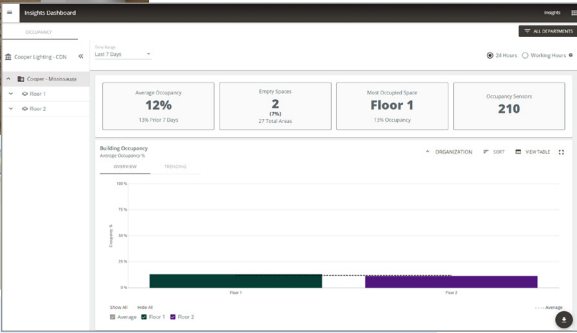


● The CORE Insights solution can lead to as much as **30% improvement in space utilization** and **15% increase in employee productivity.**



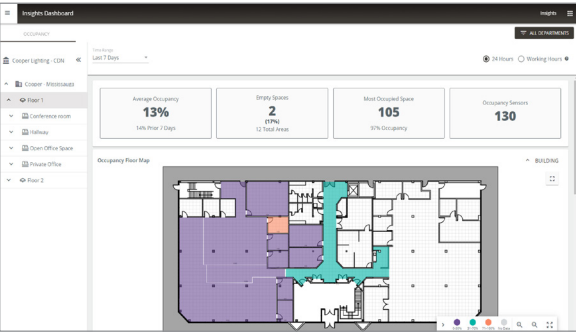
# CORE INSIGHTS

Analyze the data gathered from occupancy sensors to optimize the building space utilization with pre-configured dashboards.



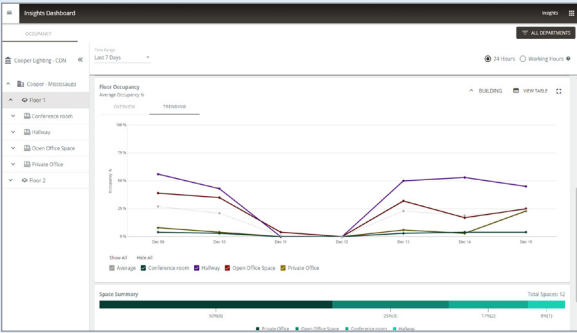
## Out-of-the-box dashboard and reports

Ready-to-use scalable multi-site dashboards available on-premises. The dashboard and reports provide aggregated and detailed occupancy metrics at enterprise, site, building, area, and room level.



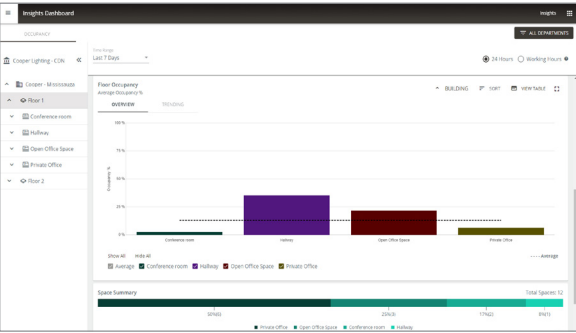
## Floorplan visualization

Along with enterprise hierarchy, charts, and other representation to quickly view average area occupancy, compare occupancy trends and real-time occupancy at site, building and floor level.



## Quickly navigate

From Enterprise level to site, area, and room level to monitor key performance indicator for real-time occupancy utilization and occupancy trends. Desktop, mobile and kiosk compatible and intuitive chart views – bar/line.



## Identify your most and least used spaces

View area occupancy across your real-estate portfolio from most used (>70%) to least used (< 30%) by department, space type, building and floor.



# COMMERCIAL OFFICE solutions

Improving occupant experience and reducing operational costs may seem like competing goals, but with more robust facility data and the right tools, you can achieve both.

**Space Usage & Traffic Flow.** Improve workplace ergonomics and save energy with a complete view of how, when, and where people move throughout your office.

**Workplace Analytics.** Improve the employee experience and sharpen your customer focus by gaining a dynamic view of collaboration patterns.

**Asset Monitoring.** Safeguard valuable assets by pinpointing their exact locations in the building and receiving alerts when something's not right.

**Continuous Improvement.** The longer you collect and analyze real-time building data, the more you'll be able to optimize for the long term.

● Improve your workspace for today.  
*Future-ready for tomorrow.*



Real-time indoor location for mobile devices and equipment



Real-time room level occupancy and location of mobile devices



Monitor and maintain equipment in real-time



Workspace optimization and employee workflow based on occupancy



Long-term workplace analytics including space utilization and team dynamics



# EDUCATION solutions

When it comes to school safety, visibility is critical. Gain peace of mind with real-time data and immediate notifications of threats or irregularities.

**Facility Management:** Manage the lighting system through a single user interface.

- Respond to the change in light level requests quickly and easily
- Create area scenes and schedules to shift mood and perception of the space through the day
- Allows users to control, set levels for and tune individual lights from a graphical floor plan

**Staff, Student and Visitor Safety:** Know the exact location of staff, students and visitors at any point in the facility for easy evacuation

- Send custom emails and text notifications
- Know when students leave the building and view their location in parking lots and garages
- Get notified immediately when visitors enter unauthorized areas

**Asset & Environment Security:** Improve safety, wait times, quality of care and more by understanding your building's patterns.

- Ensure valuable equipment and electronics don't leave school property without authorization
- Get notified when refrigerator or medication cooler temperatures fall outside of ideal thresholds



Staff and student safety



Real-time notifications



Visitor location awareness



Environmental and compliance monitoring



● When it comes to school safety, **visibility is critical.**  
*That's where WaveLinx comes in.*



# HEALTHCARE solutions

Offering wearable IoT tags and devices, intuitive web-based software, and a robust location engine, WaveLinx CORE is ideal for medical settings.

**Manage Medical Equipment.** Time spent searching for equipment is time that should be spent with patients. Find it fast using CORE Locate.

**Monitor Lab Temperatures & Conditions.** Manual temperature logging is time-consuming and costly. Instead, set custom alerts around storage facility temperatures and other environmental conditions.

**Optimize Patient Flow.** Improve safety, wait times, quality of care and more by understanding your building's patterns.

**Improve Hygiene.** Reduce costly, hospital-acquired infections with better tracking and real-time hygiene reminders for staff and caregivers.



Real-time tracking for mobile hospital equipment



Patient wait times and peak facility usage



Monitor and maintain equipment in real time



Staff workflow and staff availability



Patient safety and patient / staff interaction



Asset utilization



● *Did you know...*  
**Nurses lose up to 15% productivity searching for equipment**



**WaveLinx CORE Pro**  
Enterprise | BACnet | API Integration

The WaveLinx CORE Pro is an on-premise hardware platform hosting CORE software applications. It networks up to twenty (20) WaveLinx Area Controllers or 3000 devices, collecting data that can be shared with third party system via BACnet and Public API (REST).

catalog number:  
**TRX-TCPR02** - WaveLinx CORE Pro (supports 20 WACs)  
Includes: 250 nodes

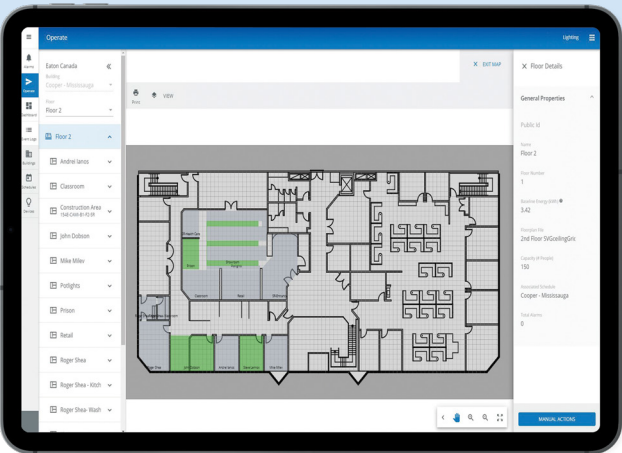


**WaveLinx CORE Enterprise / WaveLinx Virtual CORE Enterprise**

The WaveLinx CORE Enterprise is an on-premise hardware platform hosting CORE software applications. They network up to three-hundred (300) WaveLinx Area Controllers or 32,500 devices, collecting data that can be shared with third party system via BACnet and Public API (REST).

catalog number:  
**TRX-TCENT2** - WaveLinx CORE Enterprise  
Includes: 250 nodes  
**TRX-TCVRT2** - WaveLinx Virtual CORE Enterprise  
Includes: 250 nodes

# WAVELINX CORE SOFTWARE & ON-PREMISES APPLIANCES



**WaveLinx CORE Smart Spaces Platform applications**

Lighting | Asset Tracking | API | BACnet

The CORE lighting management software application helps facility/property managers take full advantage of IoT by connecting WaveLinx PRO with other building systems using BACnet and Public API (REST). WaveLinx CORE solutions include alarms with smart tips, system events, demand response, platform flexibility and future proofing.

For a complete list of compatible products, see:  
[www.cooperlighting.com](http://www.cooperlighting.com)



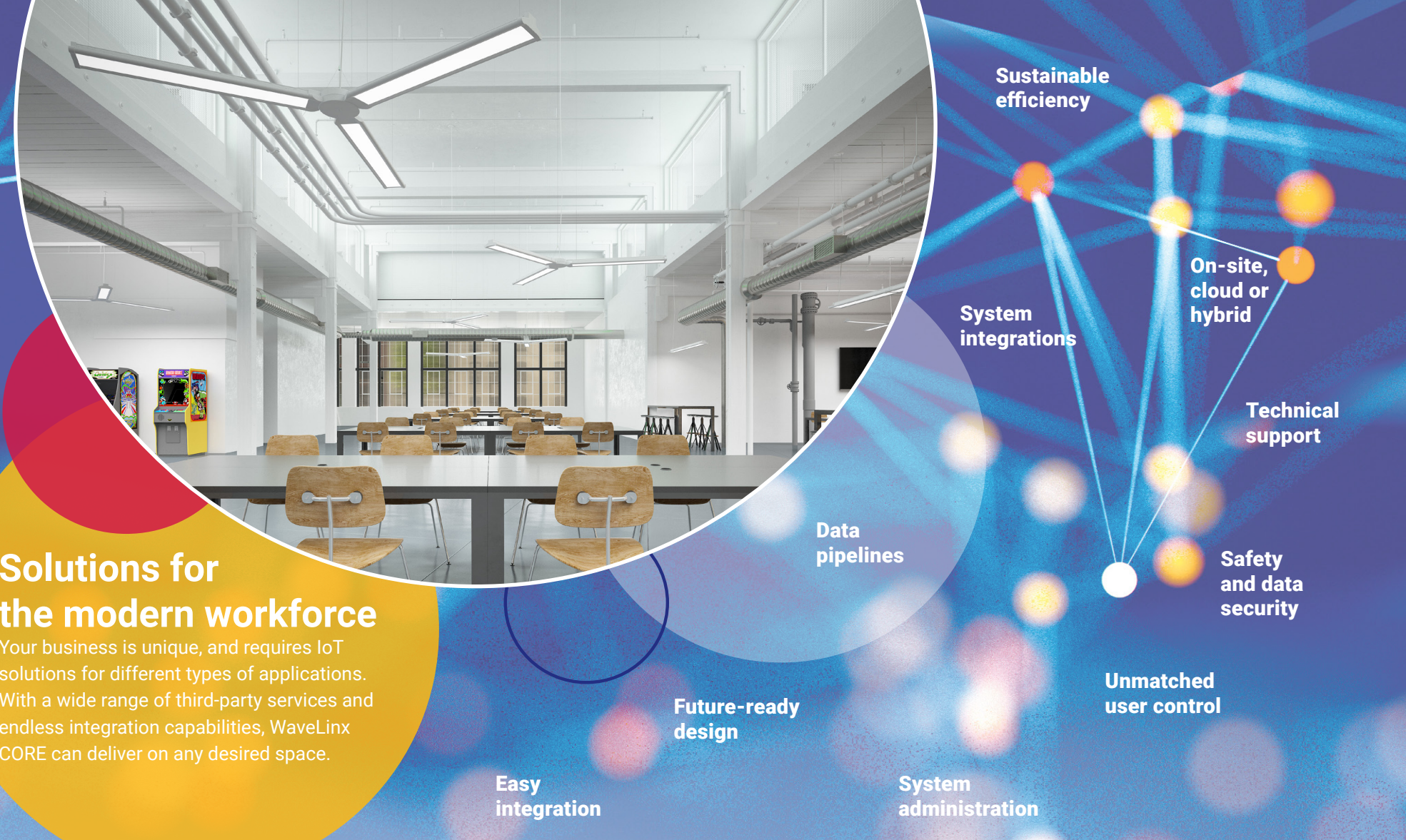
# WAVELINX PRO

Flexible. Connected. Secure.



## Solutions for the modern workforce

Your business is unique, and requires IoT solutions for different types of applications. With a wide range of third-party services and endless integration capabilities, WaveLinx CORE can deliver on any desired space.



WaveLinx PRO is a distributed wireless lighting control system that eliminates the need to run control wires to each device, lowering installation costs by up to 40%.

Its flexible design, embedded sensors, and comprehensive portfolio of wireless and low-voltage luminaires, controls, and accessories make it the ideal solution for a host of indoor and outdoor applications, from light commercial to demanding, complex industrial settings.

Easy to spec, design, install, and operate, WaveLinx PRO reduces energy consumption significantly. And when connected, the system can share the aggregated sensor data with the WaveLinx CORE platform and other building systems to improve operations, environment, and tenant experience.

## WaveLinx CORE Professional Services

We're here to help you make the most of your WaveLinx system, and ensure successful implementations. Turn to our team for knowledge, expertise and assistance – from working with the CORE Exchange APIs and interfaces to developing data pipelines and making systems talk.

visit [WaveLinx Developer Portal](#)



### Lighting Brands

Ametrix  
AtLite  
Corelite  
Ephesus  
Fail-Safe  
HALO  
HALO Commercial  
Invue  
iO  
Iris  
Lumark  
LumarkAP  
Lumière  
McGraw-Edison  
Metalux  
MWS  
NeoRay  
Portfolio  
PrentaLux - 3D Printed Lighting  
RSA  
Shaper  
Streetworks  
Sure-Lites

### Controls Brands

Greengate  
Fifth Light  
Intelligent Lighting Controls

### Connected Lighting Systems and Smart Spaces Platform

WaveLinx  
Trellix Infrastructure



**SCAN**  
for more  
WaveLinx  
information



**Cooper Lighting Solutions**  
1121 Highway 74 South  
Peachtree City, GA 30269  
P: 770-486-4800  
[www.cooperlighting.com](http://www.cooperlighting.com)

Canada Sales  
5925 McLaughlin Road  
Mississauga, Ontario L5R 1B8  
P: 905-501-3000  
F: 905-501-3172

© 2025 Cooper Lighting Solutions  
All Rights Reserved  
Printed in USA  
Publication No. BR50381823  
March 2025

Cooper Lighting Solutions is a  
registered trademark.

All other trademarks are property  
of their respective owners.

Product availability, specifications,  
and compliances are subject to  
change without notice.