

Project		Catalog #		Type	
Prepared by		Notes		Date	



Ephesus

Lumadapt 8

Integrated RGBA LED Sports Luminaire

Typical Applications
Pro Arenas • University & Collegiate Arenas • Multi-Event & Convention Centers • Gymnasiums & Field Houses

- Interactive Menu**
- Order Information [page 2](#)
 - Performance & Optical Performance Data [page 3](#)
 - Required Mounting Options and Accessories [page 4](#)
 - Example System Topology [page 5](#)

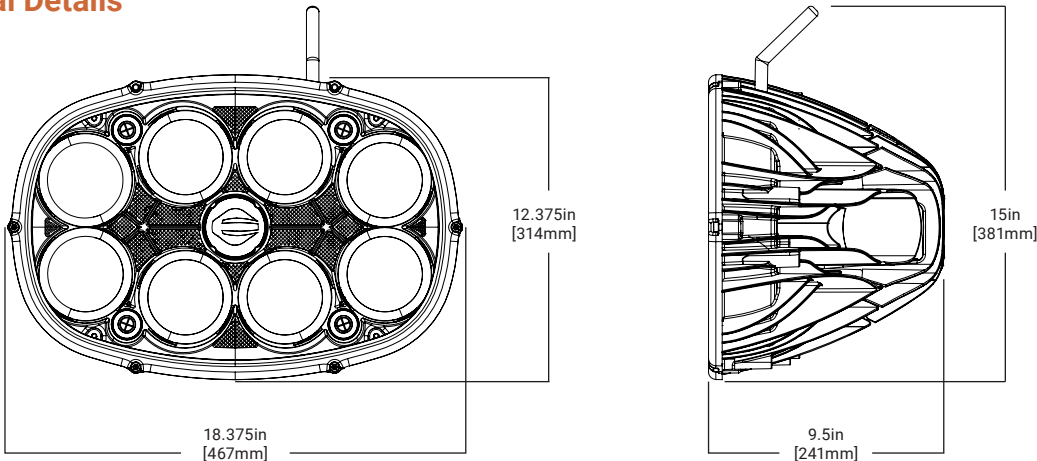
Product Certification



Top Product Features

- Wireless AirMesh lighting control options to accommodate varying venue needs
- Flexible and upgradeable to meet your facility's changing needs
- Optional integrated RGBA color for color flooding, scenes and effects
- Beam tuning optics control light to create wider and narrower beams
- Color temperature tuning for different sports and events
- Near Field Communication allows for easy commissioning on the job site
- Solid state design means no moving parts - maintenance-free operation
- Options to meet Trade Agreements Act requirements

Dimensional Details



Unit features flexible antenna

 **Installation Instructions**

Order Information

NOTE: A complete accessory order requires a selection entry for **Brand, Product, Voltage, Optics, LED, Fixture Color and Controls**.

SAMPLE ORDER NUMBER: **EPH-G8-HV-N-PC-BLK-AM**

Brand	Product	Voltage	Optics	LED	Fixture Color	Controls
Brand	Product	Voltage	Optics	LED	Fixture Color	Controls
EPH = Ephesus, Standard TAA =Trade Agreements Act ¹	G8 = Lumadapt 8	HV = High Voltage LV = Low Voltage	N =Narrow W =Wide	PC =Color Tunable White & RGBA	BLK = Black	AM = Wireless AirMesh IP = sACN
Notes: (1) Only product configurations with this designated prefix are built to be compliant with the Trade Agreements Act of 1979 (TAA). Please refer to DOMESTIC PREFERENCES website for more information. Components shipped separately may be separately analyzed under domestic preference requirements.						

Product Specifications

Multiple Control Options

- Wireless AirMesh lighting control options address varying venue needs and functionality. Contact Ephesus for options for UL924 compliant configurations.

Beam Tuning Optics

- Controls light distribution from fixture's light sources for wider and narrower beams

Color Temperature Tuning

- Can be adjusted between warmer and cooler tones for different sports and events

Integrated Color

- Optional integrated RGBA color capabilities for color flooding, scenes and effects

Feedback and Monitoring

- Individual fixture and system level data is stored securely in the data cloud for review of performance and health

Easy Field Commissioning

- Integrated Near Field Communication (NFC) in each fixture allows for communication to unpowered fixtures to set CCT, beam angle and other parameters on the job site

Mounting Options

- A variety of mounting options combined with 360 degree mounting orientation provides flexibility for any installation

Construction

- Solid state design means no moving parts to wear out or replace, providing maintenance-free operation

Performance Data

Lumen output	up to 50,000 lumens
Input wattage / power supply output wattage	440 watts / 400 watts
Input voltage (high voltage)	277-480VAC, 50/60 Hz
Input voltage (low voltage)	120-240VAC, 50/60 Hz
CCT Range ⁵	5000K nominal (3500K-5600K optional)
Color lighting	Integrated RGBA
Lumen Output by Color ⁵	
Red	325
Green	1950
Blue	277
Amber	1395
CRI ⁵	>= 85 CRI

NOTES:

(1) For proper functionality, Lumadapt 8 fixtures must be sold with other Lumadapt system components.

(2) Higher TLCI fixtures available upon request.

TLCI ⁵	70 min/75 typical TLCI ⁽²⁾
Dimming range	Full range; 1-100%
Beam angle	NEMA 4 nominal (3-5 optional)
Operating temperature range	-40 degrees C to +50 degrees C
Usage	Indoor
Mounting options (3G rated)	Pendant, yoke
Mounting angle	360 degrees / full range
Electrical certifications	UL 8750, UL 1598
NEMA rating	NEMA 4X
Surge	6kV common mode / 4kV differential mode
Effective Projected Area	1.4 ft sq
Approximate Weight	28 lbs ⁽³⁾

(3) Mounting options and hardware may vary and affect final fixture weight.

(4) Specifications are subject to change without notice.

(5) Values are +/- 2%

Optical Performance Data

OPTIC	LED SOURCE COLOR	NEMA TYPE	CRI	CCT RANGE	LUMEN RANGE (Lm)	INPUT POWER (W) RANGE	Lm/W RANGE	BEAM ANGLE RANGE	FIELD ANGLE RANGE
NARROW	WHITE	NEMA RANGE 3-5	85	3500K - 5600K	41086-50562	393.7-407.4	110.5-116.8	21-55	36-83
	RED		N/A	N/A	285	35.7	8.0	39.8	91.5
	GREEN		N/A	N/A	2003	36.0	55.6	42.2	98.5
	BLUE		N/A	N/A	244	36.2	6.7	40.5	91.7
	AMBER		N/A	N/A	1,350	35.6	37.9	40.9	91.4
WIDE	WHITE	NEMA RANGE 3-5	85	3500K - 5600K	40593-49546	394.2-407.4	108.6-114.5	50-77	96-135
	RED		N/A	N/A	271	35.8	7.6	69.6	136.9
	GREEN		N/A	N/A	1907	36.0	53.0	70.1	137.0
	BLUE		N/A	N/A	230	36.2	6.4	74.0	140.8
	AMBER		N/A	N/A	1288	35.6	36.2	70.4	136.4

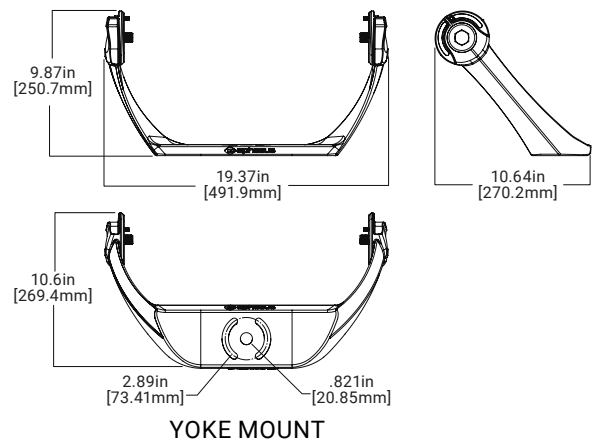
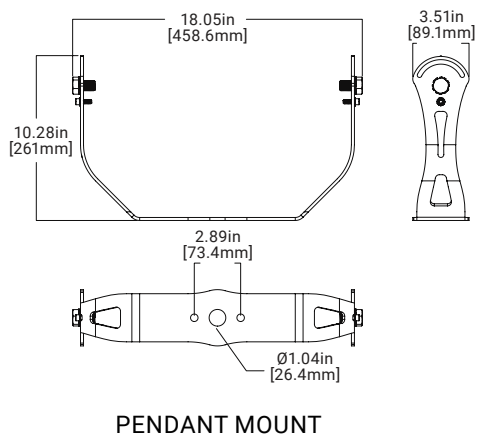
Ordering Information for required mounting options and accessories

NOTE: A complete accessory order requires a selection entry for **Brand, Product, Fixture, Fixture Color, Mounting and Junction Box Connection, Power Cable and Packaging.**

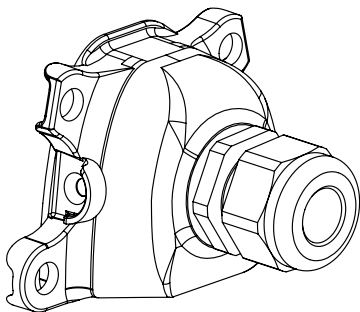
SAMPLE ORDER NUMBER: **EPH-G8-BLK-PC-NPC-BP**

Brand	Product	Fixture Color	Mounting and Junction Box Connection	Power Cable	Packaging
Brand	Product	Fixture Color	Mounting and Junction Box Connection ¹	Power Cable	Packaging
EPH=Ephesus	G8=Lumadapt 8	BLK=Black	PG=Pendant mount with cord grip PC=Pendant mount with conduit fitting YG=Yoke mount with cord grip YC=Yoke mount with conduit fitting	NPC=No power cable C10=10ft cable	BP=Bulk Packaging ¹
Notes				Notes	
(1) Junction box not shown. Ordering fixtures without accessories and junction box will result in loss of NEMA4X & IP66 rating				(1) Six items come in each bulk package	

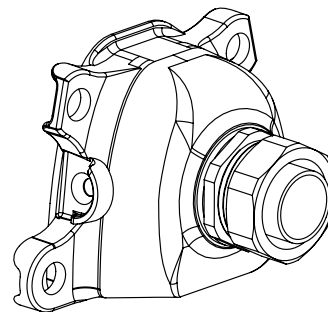
Dimensional and Mounting Details



JUNCTION BOX CONNECTION OPTIONS



WITH CORD GRIP



WITH CONDUIT FITTING

Ordering Information for Extension Plate (EXTPLT) Mounting Option and Accessories

NOTE: A complete accessory order requires a selection entry for **Brand, Accessory, Option**.

SAMPLE ORDER NUMBER: **EPH-HRDM58-025**

Brand	Accessory	Option	
Brand	Accessory	Option	Intended Use
EPH = Ephesus	EXTPLT = Extension Plate ¹	025 = .25in 050 = .5in 200 = 2.0in	Extension Plate Kit to mount to structures .25in, .5in, or 2.00in thick. Designed to be used with the LUMASPORT 8, LUMADAPT 8, PRISM RGBA & ALL FIELD luminaires only.
	HRDM58 = Mounting Hardware 5/8in diameter	050 = .375in - .50in Range of Clamping Thickness ² 200 = 2in Clamping Thickness ²	HRDM58-050: .375- .500in clamping thickness, Use for Extension Plate (EXTPLT) or other flat surfaces drilled for 5/8in hardware HRDM58-200: 2.00in clamping thickness, use for 2in x 4in Cross arms that are drilled for 5/8in hardware
	Notes: (1) Additional mounting fastener hardware kit needed to attach a fixture to the EXTPLT = Extension Plate	Notes: (2) Option only available for use with HRDM58	

HRDM58 Dimension and Part Details:

HRDM58-050:

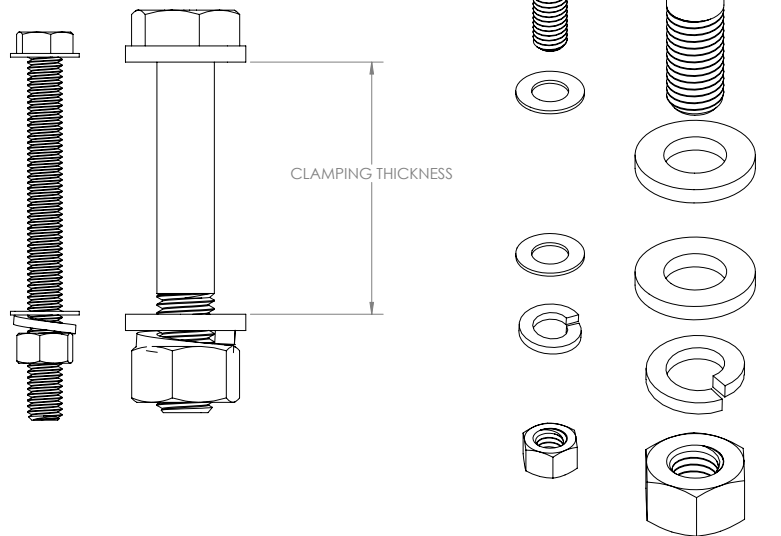
.375-.500in clamping thickness, Use for Extension Plate (EXTPLT) or other flat surfaces drilled for 5/8in hardware

HRDM58-200:

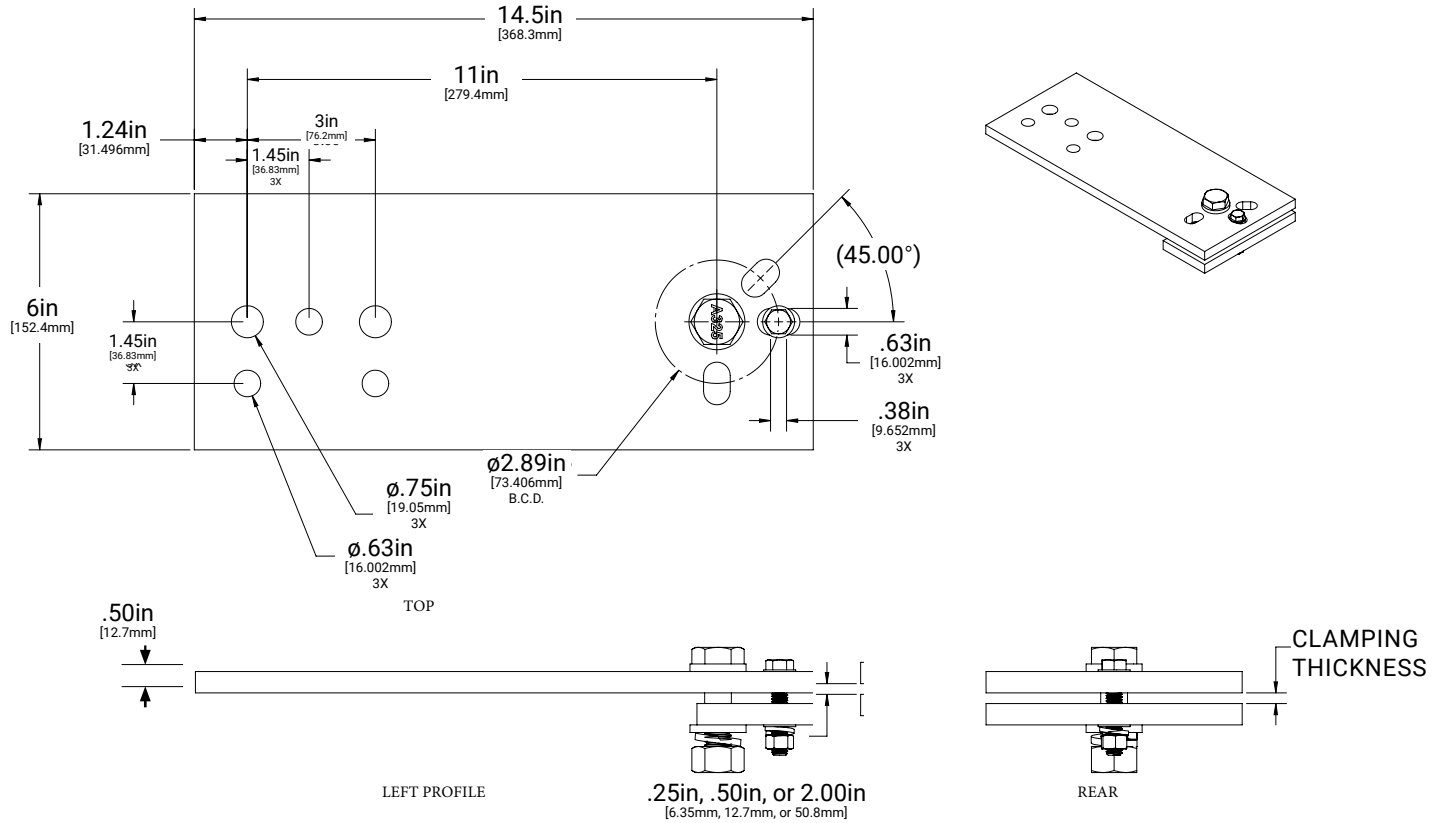
2.00in clamping thickness, use for 2in x 4in Cross arms that are drilled for 5/8in hardware

HRDM58 Data

MODEL #	WEIGHT (LBS)
HRDM58-050	.65
HRDM58-200	.84



Extension Plate (EXTPLT) Dimension and Part Details:



Extension Plate Data

MODEL #	WEIGHT (LBS)
EXTPLT	14.63
EXTPLT + HRDM58-050	15.28

Extension Plate Kit Parts

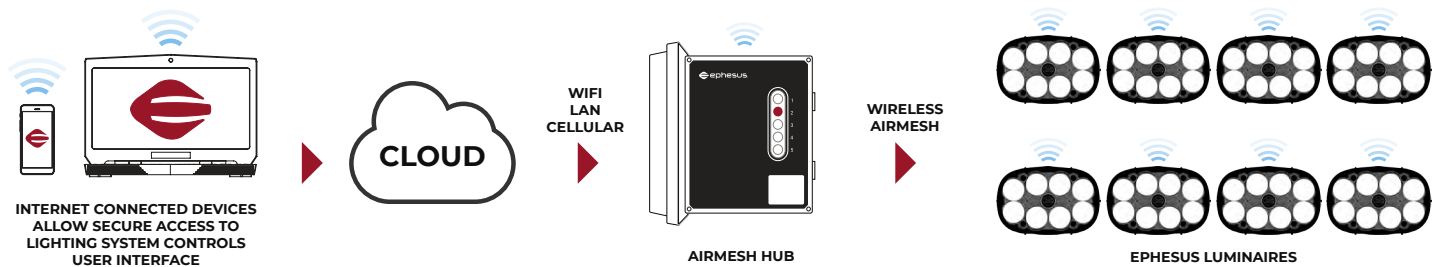
DESCRIPTION	QUANTITY
Extension Plate	1
Washer Plate	1
5/8in Hex Bolt	1
5/8in Washer	2
5/8in-11 Hex Nut	1
5/8in Split Washer	1
3/8in Washer	2
3/8in Hex Bolt	1
3/8in Split Washer	1
3/8in-16 Hex Nut	1

Example System Topology (Wireless AirMesh Controls)

Example system topology showing the LUMADAPT 8 System in a Wireless AirMesh Control Installation.

Note: Laptop and mobile device not included. A cellular network connection requires a cellular carrier network plan.

REMOTE ACCESS



ON SITE ACCESS



Example System Topology (Contactor Controls)

Example system topology showing the LUMADAPT 8 System in a Wired Contactor Controls Installation.

Note: Laptop and mobile device not included. A cellular network connection requires a cellular carrier network plan.

