

## DESCRIPTION

The Fail-Safe HVSL4 provides style with strength. Steel end caps and steel body provides strength while an extruded linear ribbed polycarbonate lens with a lifetime warranty obscures the LED image and spreads light evenly.

The HVSL4 is ideal for areas where the need for aesthetics and protection from vandalism are critical. Perfect for stairwells, schools, hospitals, corridors, dormitories, public restrooms, common areas, and transit stations.

## SPECIFICATION FEATURES

### Housing

Heavy duty, 18 ga. steel housing and end caps provide rigid construction. Stainless-steel and die-formed aluminum available. End caps provided with 7/8" knockouts for continuous row mounting. Pendant mount standard with (2) 7/8" in the housing back (all lengths except 1' and 2'). Stem sets ordered separately as accessory item. Finished in matte white paint standard. Optional architectural colors available.

### Fasteners

White painted Hex-head screws (4) secure the lens to the housing. Stainless steel TORX®T20 (SF1) with center reject pin and allen head with center pin reject screws (SF3) optional. Optional flush side screws (FSS or FSSPT) painted matte white.

### Lens

One-piece extruded UV stabilized diffuse polycarbonate standard. Unique linear ribbed design provides even light distribution while obscuring lamp image and direct glare. Internal ribs reduce dirt build-up and facilitates cleaning. Nominal lens thickness = 0.085". **Lifetime Lens Warranty.**

### Reflector

18 ga. CRS with white high reflectance polyester powder coat finish. Reflector serves as driver and wireway cover.

### Mounting

Surface mount standard, wall or ceiling. Continuous row possible using end knock-outs.

### Light-Emitting Diode (LED)

LEDs available in 3000K, 3500K, 4000K and 5000K with minimum 80 CRI. Projected life is 50,000 hours at 70% lumen maintenance.

### Transformer/Driver

Electronic, 0-10V dimming standard.

### Compliance

cULus listed for damp locations standard. Wet location under covered ceiling available, wall or ceiling mount. NSF2 rated optional.

### Warranty

Five year warranty on the LEDs and electrical. Lifetime Warranty if fixture found to be inoperative due to physical abuse for the duration of the installation.



## HVSL4

### LD4 LED

4" Width  
Vandal Resistant Linear LED  
Steel Housing

Polycarbonate Lens



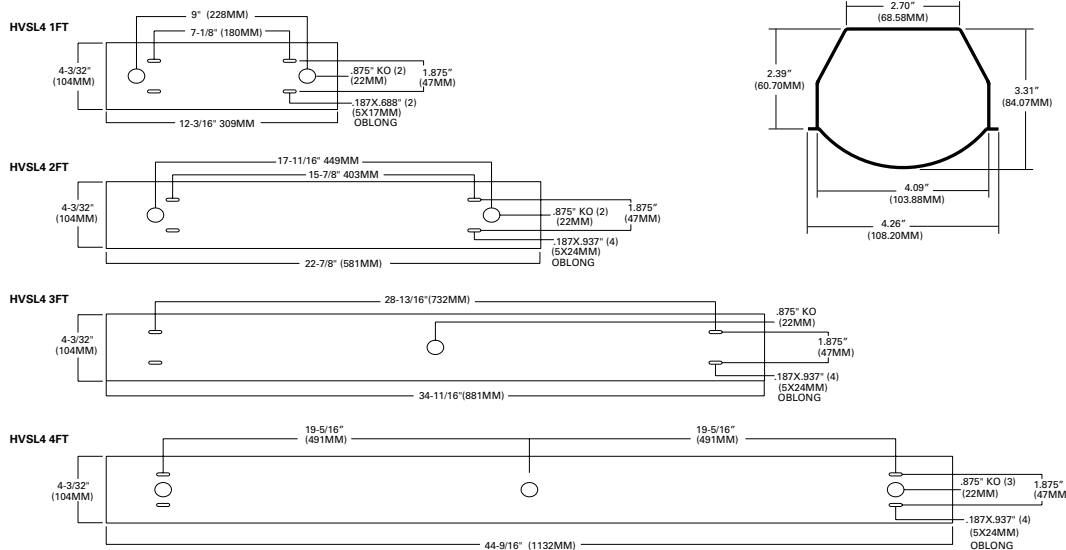
### 5 DAY QUICK SHIP SKU's Catalog Numbers

QS5-HVSL4-4-4200LM-35

QS5-HVSL4-4-4200LM-40

QS5-HVSL4-4-7900LM-35

QS5-HVSL4-4-7900LM-40



#### NOTE:

\* 8' Fixture incorporates (2) 4' fixtures, attached at the factory, and one single 8' length lens

## RATINGS

cULus

Damp location - standard

Wet location under covered ceiling - available

## ENERGY DATA

For Energy Management related technical data to support the performance of this fixture series, refer to the ordering information for input wattage.

## ORDERING INFORMATION

SAMPLE NUMBERS: HVSL4-4-LD4-2STD-40-UNV-O-EDC1  
HVSL4-4-LD4-2LO-35-UNV-O-EDC1-EL7W

Product Family	Length	LED Type	Number of LED Modules	Illumination Level	Color Temperature	Voltage	Lens Type	Driver	Options	Finish
<b>HVSL4</b>		<b>LD4</b>				<b>UNV</b>	<b>O</b>			
HVSL4=4" Wide HVSL Linear Steel		LD4=LED, Version 4.0		UNV=120 - 277V		O=Opal Polycarbonate		Blank=Matte White BK=Black DP=Dark Platinum BZ=Bronze		
1=1' Length <sup>6,7</sup> 2=2' Length <sup>6</sup> 3=3' Length 4=4' Length <sup>1</sup> 8=8' Length <sup>1</sup>		1=(1) LED Module in Cross-section 2=(2) LED Modules in Cross-section		EDC1=Single Circuit, Non-Dimming <sup>5</sup> EDC2=Dual Circuit, Non-Dimming <sup>5</sup> EDD1=Single Circuit, 0-10v 10% Dimming <sup>5</sup> EDD2=Dual Circuit, 0-10V 10% Dimming <sup>5</sup> ED1D1=Single Circuit, 0-10V 1% Dimming <sup>5</sup> ED1D2=Dual Circuit, 0-10V 10% Dimming		Custom colors available. Furnish RAL number or paint manufacturer/catalog number, or color chip. Consult Technical Support for proper catalog logic.				
		STD=Standard LO=Low HI=High								
		30=3000 Kelvin 35=3500 Kelvin 40=4000 Kelvin 50=5000 Kelvin								

## Notes:

- 8 ft. unit consists of (2) 4 ft. housings joined together at the factory with single 8 ft. lens.
- EL7W option is not available in the 1' or 2' lengths. EL7W is available in 3' & 4' lengths with 1LO, 1STD, 1HI, & 2LO, but not available in 2STD or 2HI. 2STD w/EL or 2HI w/EL are only available in 8' length. EL7W is available with PMSC or PMY options.
- na
- Specify voltage either 120 or 277.
- Purple and gray low voltage driver leads connected to driver for EDD1, EDD2. Not connected for EDC1, EDC2.
- No center KO.
- 1ft. fixture, single circuit only.
- na
- EL10W & EL14W are only available in the 4' & 8' lengths. The 4' length w/EL is available with 1LO, 1STD, 1HI, & 2LO, but not available in 2STD or 2HI. 2STD w/EL or 2HI w/EL is only available in the 8' length. EL10W & EL14W are not available with PMSC or PMY.
- Not available 1' & 2' lengths, or other lengths with either EM or dual circuit.
- Adds 4" to fixture length. May cause objectionable dark area behind lens on one end.
- Does not include stem, chain, or y-toggle.
- na
- Available in 4' and 8' only.
- FM105 sensor operates at 5.8GHz and may interfere with wireless network signals if they are operating on that same frequency.
- na
- GSKLNS option is standard with WL option so it is not needed in catalog logic.
- External occupancy sensor (OSE) is damp location listed only.

OS1=Internal Occupancy Sensor (behind lens), connected to <sup>4,10,11,15</sup> 1 row of LED modules.  
OS2=Internal Occupancy Sensor (behind lens), connected to <sup>4,10,11,15</sup> 2 rows of LED modules.  
OSE1=Occupancy Sensor Mounted in End External Box, Connected to One LED Module (box attached to end plate) (FS305) <sup>4,10,18</sup>  
OSE2=Occupancy Sensor Mounted in End External Box, Connected to Two LED Modules (box attached to end plate) (FS305) <sup>4,10,18</sup>  
OSES1=Occupancy Sensor Mounted in Side External Box, Connected to One LED Module (FS505) <sup>4,10,18</sup>  
OSES2=Occupancy Sensor Mounted in Side External Box, Connected to Two LED Modules (FS505) <sup>4,10,18</sup>  
EL7W=7W Emergency Pack <sup>2</sup>  
EL10W=10W Emergency Pack <sup>9</sup>  
EL14W=14W Emergency Pack <sup>9</sup>  
SF1=TORX® T20 Tamper Proof side screws  
SF3=Allen-head center pin reject Tamper Proof side screws  
SHP=Stainless Steel Painted Housing  
SHPA=Stainless Steel Painted, all Fabricated Components  
ALH=Aluminum Painted Housing  
ALHA=Aluminum Painted, all Fabricated Components  
GSKLNS=Gasket to Lens - Side and Ends <sup>17</sup>  
WL=Wet Location Under Covered Ceiling  
PMSC=Pendant Mount, Stem/Canopy using standard knockouts in back of housing, <sup>2,9,12</sup> (4' & 8' length only) - damp location rated only, (no wet location)  
PMY=Pendant Mount, AYC Chain or Y-Toggle, uses (4) 0.187"x 0.937" holes, (2) each end, <sup>2,9,12</sup> (4' & 8' length only) - damp location rated only, (no wet location)  
NSF=NSF2 Listed (non-food, splash zone)  
AM=Anti-microbial matte white paint  
FSS=Flush side screws (secure lens, non tamper proof)  
FSSTP=Flush side screws (secure lens, tamper proof)

Accessories  
(Order Separately)

VRSD=T20 Center Pin  
Tamperproof  
TORX®-head bit  
SCF-XX-B=Fixed Stem Set  
XX=Length (6, 8, 12, 24, 36, 48, 60, 72)  
Used with all surface fixtures as stem sets. One set consists of one stem assembly. Minimum of two sets required per fixture.  
Not rated WL under covered ceiling.  
HVSL4-X-CM/BKT=HVSL4 Corner Mount bracket, specify length (X=length=1,2,3,4,8)  
HVSL4-CRNR/CONN=Corner Connector, 90 degree.  
HVSL4-X-WMAB45=Wall Mount angle bracket, 45 degree, specify length (X=length=1,2,3,4,8)

5 Day Quick Ship Catalog Logic (QS5)					
SPEED (DAYS)	PRODUCT	LENGTH	LUMENS	COLOR TEMP	CATALOG NUMBER
5	HVSL4	4	4200	35	QS5-HVSL4-4-4200LM-35
5	HVSL4	4	4200	40	QS5-HVSL4-4-4200LM-40
5	HVSL4	4	7900	35	QS5-HVSL4-4-7900LM-35
5	HVSL4	4	7900	40	QS5-HVSL4-4-7900LM-40
NOTES: Opal Lens, Single Circuit, LD4 LEDs, No Options, Voltage UNV, Matte white standard 5 days from receipt of PO from factory Max order size = 50					

## NOMINAL INPUT WATTS/DELIVERED LUMENS - 4000K

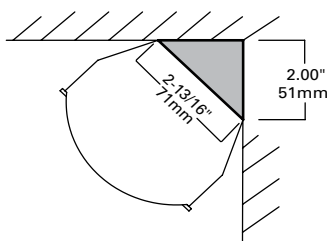
Fixture	Length	# Modules in Cross-Section	Illumination Level	Nominal Input Watts	Nominal Delivered Lumens
HVSL4	2'	1	LO	13.1	1350
			STD	18.3	1900
			HI	22.1	2112
			LO	23.5	2432
			STD	33.5	3230
			HI	44.5	3911
	4'	1	LO	23.6	2615
			STD	33.5	3484
			HI	44.2	4255
			LO	47.5	4924
			STD	67.6	6541
			HI	89.3	7883

• Nominal input wattage values include LED voltage, drive currents and typical driver efficiency. Refer to LM79 data/photometric files for exact delivered lumen values and input wattage. Values in table are nominal values only.

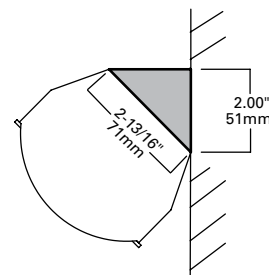
• For 8' fixture delivered lumens, multiply 4' unit by a factor of 2.

**CORNER MOUNT BRACKET (Accessory)**

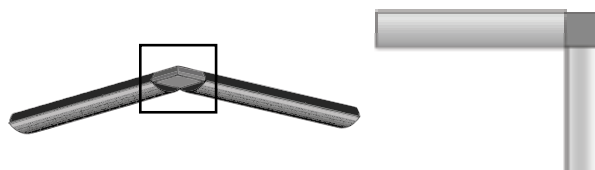
**HVSL4-X-CM/BKT**=HVSL4 Corner Mount Bracket, specify length, (X=1,2,3,4,8)

**WALL MOUNT ANGLE BRACKET (Accessory)**

**HVSL4-X-WMAB45**= HVSL4 Wall Mount Angle Bracket, 45 degree, specify length, (X=1,2,3,4,8)

**HVSL4 - CORNER CONNECTOR (Accessory)**

**HVSL4-CRNR/CONN** = HVSL4 Corner Connector, 90 degree.

**PENDANT MOUNT: Suspension Sets - Stem Sets (Option)**

**XX** = Length ( 6, 8, 12, 24, 36, 48, 60, 72)

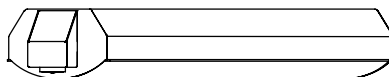
**SCF-XX-B** = Fixed Stem Set

Used with all surface fixtures as stem sets. One set consists of one stem assembly. Minimum of two sets required per fixture. Not rated WL under covered ceiling.

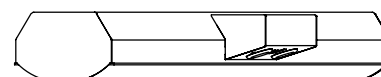
**NOTE:** Coupler, 3/8" IPS Pipe Coupler to join lengths. Coupler is standard baked white enamel or special order of black. Must specify pendant mount (PMSC or PMY) option on luminaire.

**EXTERNAL OCCUPANCY SENSORS (Option)**

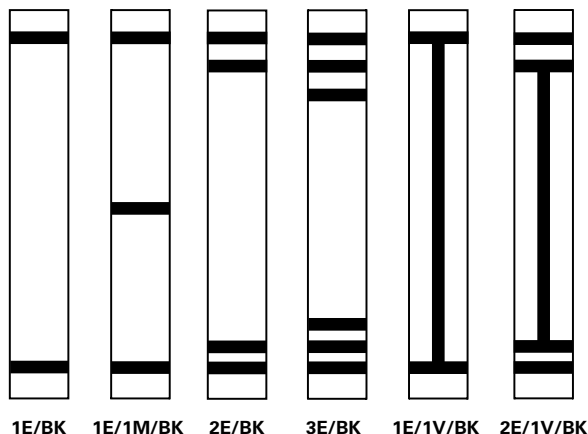
**OSE**= Occupancy Sensor mounted in external box, (box attached to fixture end plate).



**OSSES**= Occupancy Sensor mounted in external box on side of fixture (box attached to side of fixture).



\* Internal occupancy sensor available behind lens, positioned at fixture end. Internal sensor adds 4" to the fixture length. (OS1,OS2).

**DECORATIVE LENS/BANDS (Option)****Ordering Logic (Add to end of fixture catalog #)**

Example: HVSL4-4-LD4-1STD-40-UNV-O-EDC1-1E/BK

No of HORIZONTAL BANDS and LOCATION	VERTICAL BAND	BAND COLOR
<b>1E</b> =1 Band on End <b>2E</b> =2 Bands on End <b>3E</b> =3 Bands on End <b>1M</b> =1 Band in Middle <b>2M</b> =2 Bands in Middle <b>3M</b> =3 Bands in Middle	<b>1V</b> =1 Band Vertical	<b>BK</b> =Black <b>BR</b> =Bronze <b>BL</b> =Blue

**Notes:**

- \*Bands are 3/4" thick
- \*Bands are high durability paint finish
- \*For custom colors, please furnish RAL# or paint manufacturer/catalog number
- \*For other variations or colors not shown, please issue PDR