

DESCRIPTION

The UCL and UCLV provide effective LED task lighting in most any demanding environment. Heavy gauge cold rolled steel, finished with powder coat white paint, encloses and protects the linear LED module. Stainless steel brushed or painted is available for extreme environments. The LED module is available in color temperatures from 3000K to 5000K. UCL and UCLV are available in acrylic or polycarbonate lenses. Available in 1' to 4' lengths, in 1' increments.

SPECIFICATION FEATURES

Housing/Cover

UCL - 20 gauge cold-rolled steel housing. K.O. on back and each end. Keyhole slots for mounting.

UCLV - 20 gauge cold-rolled steel housing with keyhole slots for mounting. K.O. on back and ends for power. Seam-welded cover fits over housing (lens between housing cover). Four counter-sunk holes allow counter-sunk screws to attach cover to housing.

Finish

Gloss white polyester powder coat standard. Optional matte white anti-microbial powder coat white paint available. Stainless steel brushed or stainless steel painted powder coat white optional.

Fasteners

UCLV incorporates (4) stainless steel counter-sunk tamper proof TORX® T-20 screws which secure housing to back pan. Philips-head screws available.

Lens

Opal Acrylic and Opal Polycarbonate, 0.125" thick. Acrylic Pattern 12 and Polycarbonate Pattern 12, 0.125", 0.156" or 0.187" thick.

Electrical / LEDs

LED's are available in 3000K, 3500K, 4000K or 5000K with minimum 80 CRI. 90 CRI available. Nominal 750 lumens per linear foot. Replaceable LED / driver assembly. Life is 50,000 hours at 70% lumen maintenance. Electronic driver, 0-10V dimming standard.

Labels

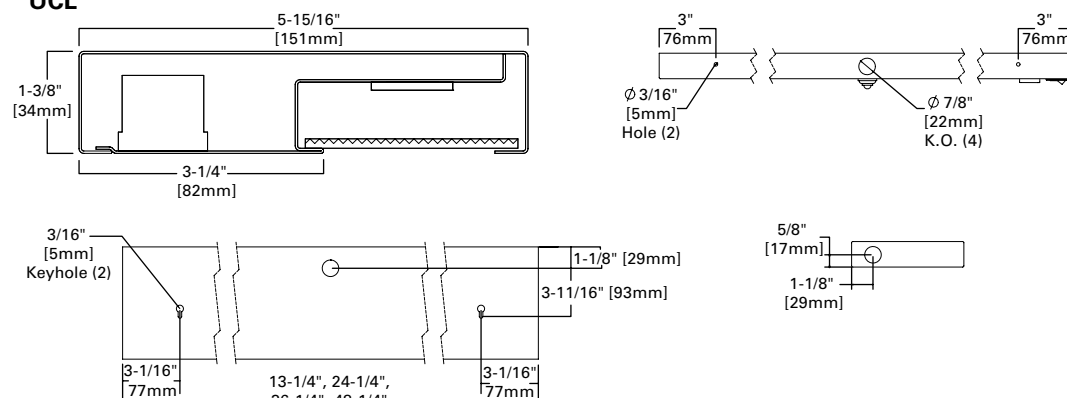
UL/cUL listed for damp locations. UCLV optional IP63 rated.

Warranty

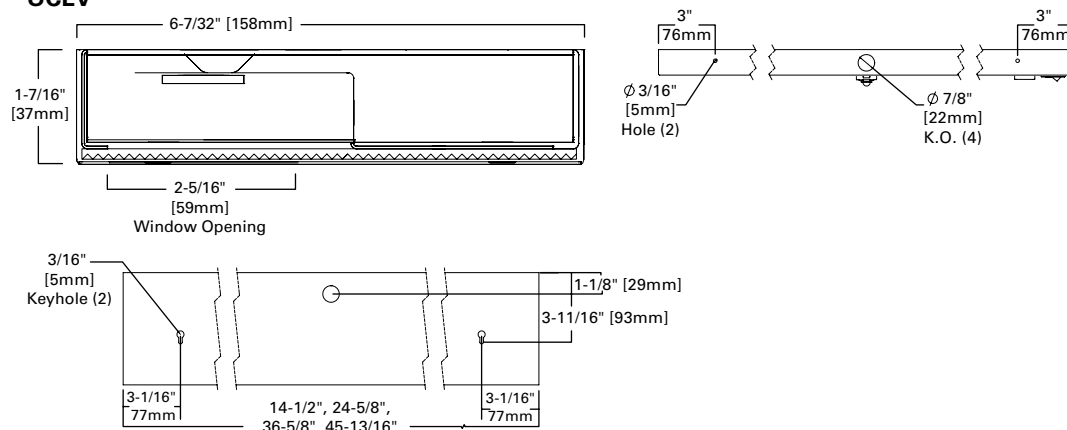
Five year warranty on LED's and electrical.

DIMENSIONS

UCL



UCLV



UCL



UCLV

UCL UCLV

LD4 LED
Undercabinet

Commercial
Medical
Vandal Resistant

Nominal Length	Nominal Input Watts
1' (300mm)	9.55
2' (600mm)	17.47
3' (900mm)	25.16
4' (1200mm)	49.15

Nominal Length	Nominal Delivered Lumens*
1' (300mm)	773.8
2' (600mm)	1622
3' (900mm)	2602
4' (1200mm)	4183

*A12125 Lens

PHOTOMETRICS

See website for IES/photometric files

ORDERING INFORMATION

SAMPLE NUMBERS: UCL-2-LD4-35-A12125-EDC1-UNV-ALH / UCLV-4-LD4-40-82-EDD1-UNV-NTP

Series	Fixture Length	LED Type	Color Temperature	Lens	Driver	Voltage	Options	
		LD4				UNV		
UCL =Undercabinet, LED UCLV =Undercabinet LED, Captive Lens	1 =1' Length 2 =2' Length 3 =3' Length 4 =4' Length		30 =3000K 35 =3500K 40 =4000K 50 =5000K	A12125 =Acrylic Pattern 12, 0.125" thick 89AH =Polycarbonate Pattern 12, 0.125" Thick 81 =Polycarbonate, Pattern 12, 0.156" thick 82 =Polycarbonate, Pattern 12, 0.187" thick 89BW =Acrylic, Opal Smooth, 0.125" thick 89AM =Polycarbonate, Opal Smooth, 0.125" thick	EDC1 =Electronic Driver, ⁵ Single Circuit, Non-Dimming EDD1 =Electronic Driver, Single Circuit, 0-10V Dimming, 10% ED1D1 =Electronic Driver, Single Circuit, 0-10V Dimming, 1%		UNV =120-277	GLR =Fuse and Holder ALH =Aluminum Housing and Reflector, Powder Coat Painted White SHN =Stainless Steel, Housing and Reflector, Brushed Natural Finish on Exterior SHP =Stainless Steel, Housing and Reflector, Powder Coat Painted White OS =Occupancy Sensor, Passive Infrared Technology (not available on 1' length) ⁶ RSW =Rocker Switch, White. Specify 120V or 277V. 277V RSW is compatible with 230V, 50/60 Hz. ^{1,2,4} AM =Anti-Microbial Paint, Matte White 6CP =6' Cord with Grounded Plug ² GCO =Grounded Convenience Outlet ^{1,3,4} NTP =Non Tamper Proof Screws (Philips Head Countersunk) - UCLV only GSK =Gasketing applied to lens, ⁷ and to cover (UCLV only) IP63 =IP63 rated (UCLV only) ⁷ 90 =90CRI

Notes:

- Consult factory for compatibility with other options.
- Must specify 120V or 277V. (277V RSW is compatible with 230V, 50/60hz.)
- 120V only.
- UCLV with RSW or GCO will not be available with the GSK or IP63.
Please note that the RSW or GCO option on the UCLV will compromise the full vandal resistant feature.
- Standard "EDC1" driver, low voltage leads not connected to driver.
"EDD1" and "ED1D1" driver, low voltage leads connected to driver.
- Occupancy Sensor is positioned on the front cover on the UCL & UCLV, and maybe subject to abuse.
- GSK not available with IP63.



Product	Length		Color Temp	Lens	Driver / Circuits	Voltage	Option
QS-UCL	2	LD4	35	A12125	EDC1	UNV	RSW
	4		40		EDD1		
<p>Maximum order quantity is 50 pieces</p> <p>15 days from receipt of Purchase Order at Cooper Lighting Solutions facility to shipment from Cooper Lighting Solutions facility Must specify 120 or 277 voltage when using RSW option</p> <p>Example Catalog #: QS-UCL-4-LD4-35-A12125-EDC1-UNV</p>							