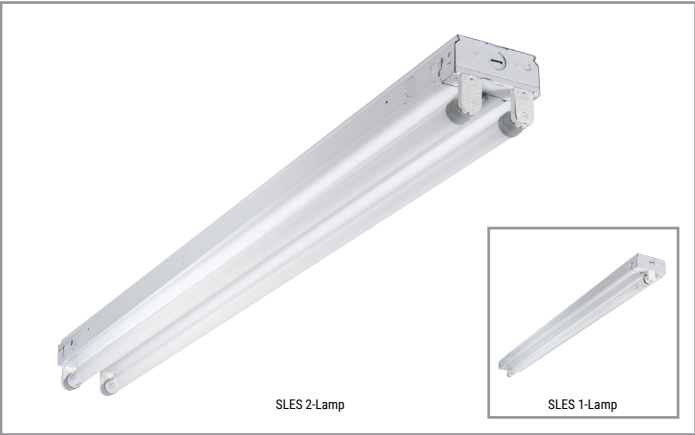


Project		Catalog #		Type	
Prepared by		Notes		Date	



Metalux

SLES

Socket-Fit Light Engine Striplight

Typical Applications

Retail • Office • Education • Warehouse

Interactive Menu

- Order Information page 2
- Energy and Performance Data page 3
- Product Warranty

Product Certification



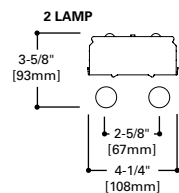
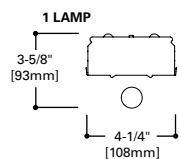
Product Features



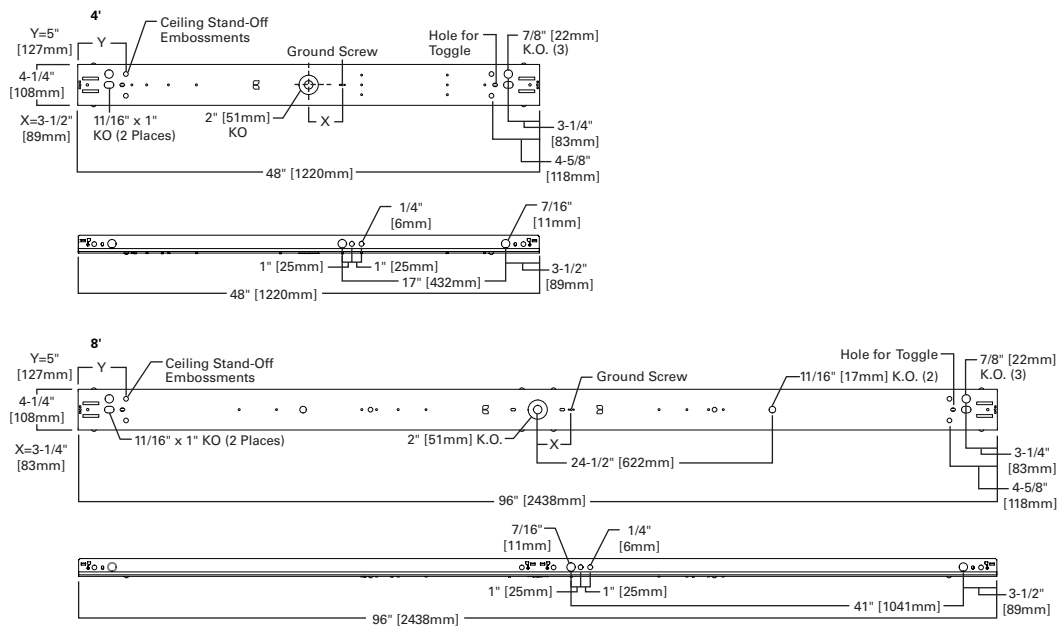
Top Product Features

- Flip-up sockets, snap-on aligner and tool-less cover reduce fixture installation time
- Replaceable TLED lamps lower maintenance cost without removing fixture
- DLC compliant lamps maximize energy savings and rebates
- TLEDs are 4ft long and come in 3500, 4000 or 5000K CCT
- Fixtures come in 4ft or 8ft lengths; T8 TLED lamps included (lamps shipped separately)

Dimensional Details



Note: Shape of lamp may not be exactly as depicted in line art.



Order Information

Fixture and Lamp Ordering Logic
SAMPLE ORDER NUMBER: 4SLES-2-T8-2G-B835-U

Length	Series	Lamp Rows	Emergency and Fuse Options	Lamp Spec		Options	Packaging
Length	Series	Lamp Rows	Emergency and Fuse Options	Wattage, Material, CCT/CRI ^{(5), (6)}		Options	Packaging
4=4 ft. Length 8T=8 ft. long Tandem	SLES=Socket-fit Light Engine Striplight	1=1 Lamp/4 ft. 2=2 Lamps/4 ft.	[Blank]=None GL=Single Element Fuse GM=Double Element Fuse EL12=12.5W Inverter ^{(1), (2)} GTR=Bodine Transfer Relay ^{(3), (4)}	Type B Glass TLED T8-1G-B=9.9 watts T8-2G-B=12 watts T8-3G-B=14.5 watts	CRI / CCT 835=80CRI, 3500K 840=80CRI, 4000K 850=80CRI, 5000K	PAF=Paint after fabrication 6-3/18 SJT-C&P-515P=Cord & Plug (120V) (15 AMP) ⁽⁷⁾ 6-3/18 SJT-C&P-L715P=Cord & Plug (277V) (15 AMP) ⁽⁷⁾ PI/CPI=Plug-In Option ^{(7), (8)}	U=Unit Pack
			Notes (1) Factory installed with integral test switch/indicator/laser test. For approximate delivered lumens multiply the lumens per watt of the desired fixture by the wattage of the emergency inverter (152 lm/W x 10 = 1520 lumens). (2) 12.5W inverter works for TLEDs up to 15W. (3) Used to bypass local control during outage. Must be used in conjunction with UL 1008 device (provided by others). (4) Must specify voltage as 120V or 277V when ordering these devices.	Notes (5) TLEDs are shipped separately from luminaire. (6) TLED Philips lamps are standard.		Notes (7) Socket brackets left uninstalled. (8) Refer to Strip Accessories Guide for PI/CPI ordering guide.	

Accessories

Accessories (order separately)
A-1-B/SPACER-B=Spacer 1-1/2" to 2-1/2" from ceiling (Use 2 Per Fixture) GRP-SSF-U=Gripper Hanger (Use 2 Per Fixture) AYC-CHAIN/SET-U=36" Chain Hanger (Use 1 Set Per Fixture) SCF=Fixed Stem Set (Specify Length) SCS=Swivel Stem Set (Specify Length) SCA=Adjustable 48" Stem Set CCA-xx-NPF/PFS/PFC=Adjustable cable set - 48" or 120" ⁽⁹⁾ CLC-SSF-B=Long Channel Connector SSF SSF-ASY-4-B=Asymmetric Reflector (4' long) SSF-SYM12-4-B =12" Symmetric Reflector WG/SSF-4FT-B=4' Wire Guard TOGGLE-10=Single Toggle No. 2 10FT long Y-TOGGLE-__-2PK=(2) Y-Toggle Cable Kits (Specify 10 or 30 for length in feet)
Notes (9) Specify Length, call out non-power feed (NPF), straight (PFS) or curly power feed (PFC)

Lamp Specification / Performance Table (Glass)

Lamp	Philips LED T8 lamp description	Watts	CRI	CCT (K)	Type	Lumens	Lens Material	Efficacy (lm/W)	Philips 12NC	DLC ID
MainsFit Glass TLED - 4FT										
T8-1G-B835	9.9T8/COR/48-835/MF15/G 10/1	9.9	80	3500	B	1600	Glass	162	929002483704	PJWBAG7L
T8-1G-B840	9.9T8/COR/48-840/MF16/G 10/1	9.9	80	4000	B	1650	Glass	167	929002483804	P4GNLB60
T8-1G-B850	9.9T8/COR/48-850/MF16/G 10/1	9.9	80	5000	B	1650	Glass	167	929002483904	PNRHRC3T
T8-2G-B835	12T8/COR/48-835/MF17/G 10/1	12	80	3500	B	1700	Glass	136	929002484104	P81MG6WR
T8-2G-B840	12T8/COR/48-840/MF18/G 10/1	12	80	4000	B	1800	Glass	144	929002484204	PXKUDN50
T8-2G-B850	12T8/COR/48-850/MF18/G 10/1	12	80	5000	B	1800	Glass	144	929002484304	PVDPRFDJ
T8-3G-B835	14.5T8/COR/48-835/MF20/G 10/1	14.5	80	3500	B	2000	Glass	133	929002484504	PWUOJVW
T8-3G-B840	14.5T8/COR/48-840/MF21/G 10/1	14.5	80	4000	B	2100	Glass	140	929002484604	P7YG7OL7
T8-3G-B850	14.5T8/COR/48-850/MF21/G 10/1	14.5	80	5000	B	2100	Glass	140	929002484704	PDR4QQZ

Fixture Performance Data

Ordering Information/Performance

Catalog	Product Description	Lumen Output, 83 CRI			Efficacy			Wattage
		3500K	4000K	5000K	3500K	4000K	5000K	120-277V
4SLES-1-T8-1G-B8XX-U	4ft 1-lamp T8 SLES strip, 120-277V, 9.9W CorePro Type B TLED included, Glass TLED	1706	1760	1760	172	178	178	9.9
4SLES-2-T8-1G-B8XX-U	4ft 2-lamp T8 SLES strip, 120-277V, 9.9W CorePro Type B TLED included, Glass TLED	3323	3427	3427	168	173	173	19.8
4SLES-1-T8-2G-B8XX-U	4ft 1-lamp T8 SLES strip, 120-277V, 12W CorePro Type B TLED included, Glass TLED	1813	1920	1920	151	160	160	12
4SLES-2-T8-2G-B8XX-U	4ft 2-lamp T8 SLES strip, 120-277V, 12W CorePro Type B TLED included, Glass TLED	3531	3739	3739	147	156	156	24
4SLES-1-T8-3G-B8XX-U	4ft 1-lamp T8 SLES strip, 120-277V, 14.5W CorePro Type B TLED included, Glass TLED	2133	2240	2240	147	154	154	14.5
4SLES-2-T8-3G-B8XX-U	4ft 2-lamp T8 SLES strip, 120-277V, 14.5W CorePro Type B TLED included, Glass TLED	4154	4362	4362	143	150	150	29
8TSLES-1-T8-1G-B8XX-U	8ft Tandem 1-lamp T8 SLES strip, 120-277V, (2) 9.9W CorePro Type B TLED included, Glass TLED	3413	3519	3519	172	178	178	19.8
8TSLES-2-T8-1G-B8XX-U	8ft Tandem 2-lamp T8 SLES strip, 120-277V, (4) 9.9W CorePro Type B TLED included, Glass TLED	6647	6855	6855	168	173	173	39.6
8TSLES-1-T8-2G-B8XX-U	8ft Tandem 1-lamp T8 SLES strip, 120-277V, (2) 12W CorePro Type B TLED included, Glass TLED	3626	3839	3839	151	160	160	24
8TSLES-2-T8-2G-B8XX-U	8ft Tandem 2-lamp T8 SLES strip, 120-277V, (4) 12W CorePro Type B TLED included, Glass TLED	7062	7478	7478	147	156	156	48
8TSLES-1-T8-3G-B8XX-U	8ft Tandem 1-lamp T8 SLES strip, 120-277V, (2) 14.5W CorePro Type B TLED included, Glass TLED	4266	4479	4479	147	154	154	29
8TSLES-2-T8-3G-B8XX-U	8ft Tandem 2-lamp T8 SLES strip, 120-277V, (4) 14.5W CorePro Type B TLED included, Glass TLED	8309	8724	8724	143	150	150	58

Note: Lamps shipped separately from fixture.

Load Data

	4'	8'
PF	> .9	
THD%	< 20%	
Low Temp Start	-20° C	
Max Ambient Temp	45° C	
Weight lbs.	4.4	9.8

Shipping Data (SLES fixture only)

Catalog No.	Length	Wt.	Pallet Qty.	Pallet Weight
4SLES	4 ft.	5.1 lbs.	90	570 lbs.
8TSLES	8 ft.	10.2 lbs.	72	784 lbs.

Product Specifications

Construction

- Die formed white steel housing channel
- Multiple channel KOs fits standard trade size conduits
- Available in 4ft and 8ft lengths
- Lamp holder bracket (flip-up socket) rotates and locks in place
- Steel channel/wireway cover secured using 1/4-turn fasteners
- End plate converts to snap-on channel aligner for continuous row mounting

Electrical

- Fully tested electrical systems comply with UL TLED requirements
- TLED lamp sources are Type B:
 - Energized using direct wire to each TLED socket
- Universal voltage (120-277V)
- Dual ended lamps prevent damage if wrong type lamp is installed.

Performance

- TLEDs provide easy maintenance and replacement similar to traditional fluorescent lamps
- Specialized sockets and electrical protection circuits ensure safety, durability and electrical code compliance
- Refer to lamp table for TLED lamp type, lens material and lumen data
- Performance will vary by lamp selection and type
- TLED lamps are rated to L70/50K life hours
- TLED lamp included with order. Shipped separately from fixture

Warranty

- Fixture = 5 years
- Glass lamp = 5 years

Finish

- Pre-treated with multi-stage iron phosphate
- Standard baked white enamel finish
- PAF option available

Compliance

- cULus listed for damp locations
- Rated for -20C to 45C ambient operation
- IESNA LM-79 and LM-80 compliant TLED lamps
- Meets FCC, part 15 Class A requirements
- DesignLights Consortium (R) qualified and classified under DLC Standard
- Suitable for use in closet storage spaces when installed in accordance with NFPA-70 and NEC 410.16 spacing requirements

Emergency Options

- Integrated factory installed EL12 inverter option for TLED fixture emergency backup use
- Only ONE lamp will be powered by EL inverter emergency backup

Mounting

- SLES can be installed using various mounting methods. Numerous options and accessories are available.
- SLES should not be vertically mounted on the wall