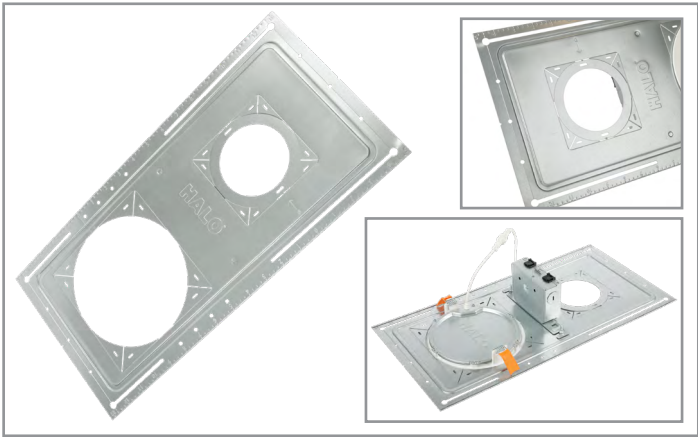


Project		Catalog #		Type	
Prepared by		Notes		Date	




# HALO

## Canless New Construction Smash Plate

The HALO Smash Plate easily reserves space in new construction installations of 3", 4", or 6" HALO Canless LED Lighting and provides drywall cutout guidance. Used to meet local code requirements by attaching the canless remote driver/ junction box to the smash plate during the rough-in phase. The durable galvanized steel plate is designed with multiple alignment features to enable consistent placement and full-coverage between 12- and 24-inch joists.

**Typical Applications** Residential

- 
**Interactive Menu**
  - Order Information page 2
  - Product Specifications page 2
  - Product Warranty

### Product Certification



### Product Features

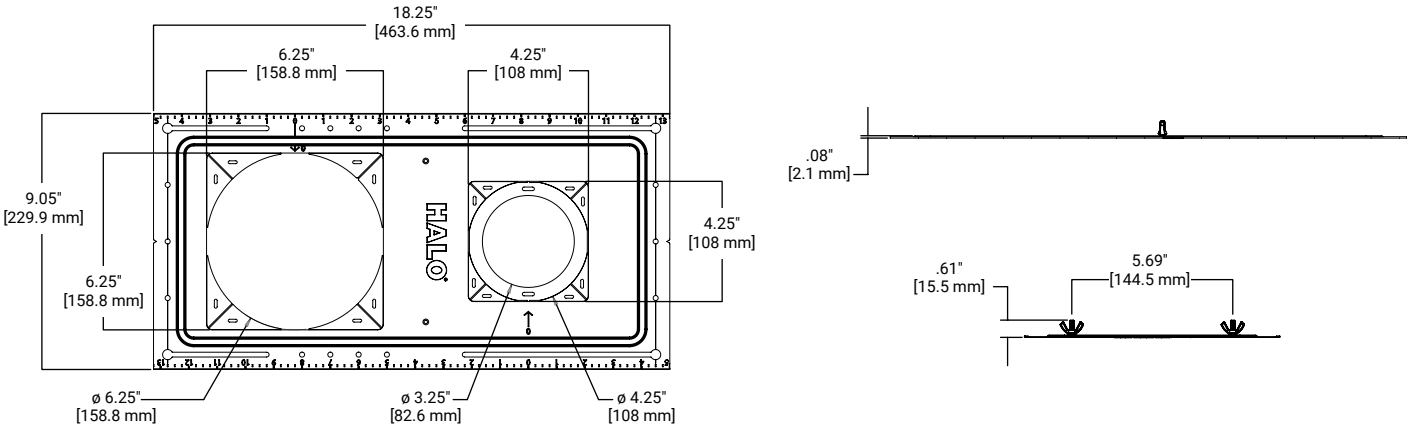


1. Can be used in wet locations with wet location LED trim or surface mount fixture.

### Top Product Features

- For 3", 4", and 6" HALO Canless LED Adjustables and Downlights
- Corner knockouts convert 4" and 6" openings from round to square
- Use to reserve fixture placement and meet local code requirements where install from below fixtures must be supported directly by building structure
- Economical canless mounting frame alternative when a drywall collar is not required
- V notches, tape measure retention slots and imprinted measurement scale for consistent placement and alignment
- Provides toolless attachment of canless fixture's remote driver/junction box during rough-in wiring

### Dimensional and Mounting Details

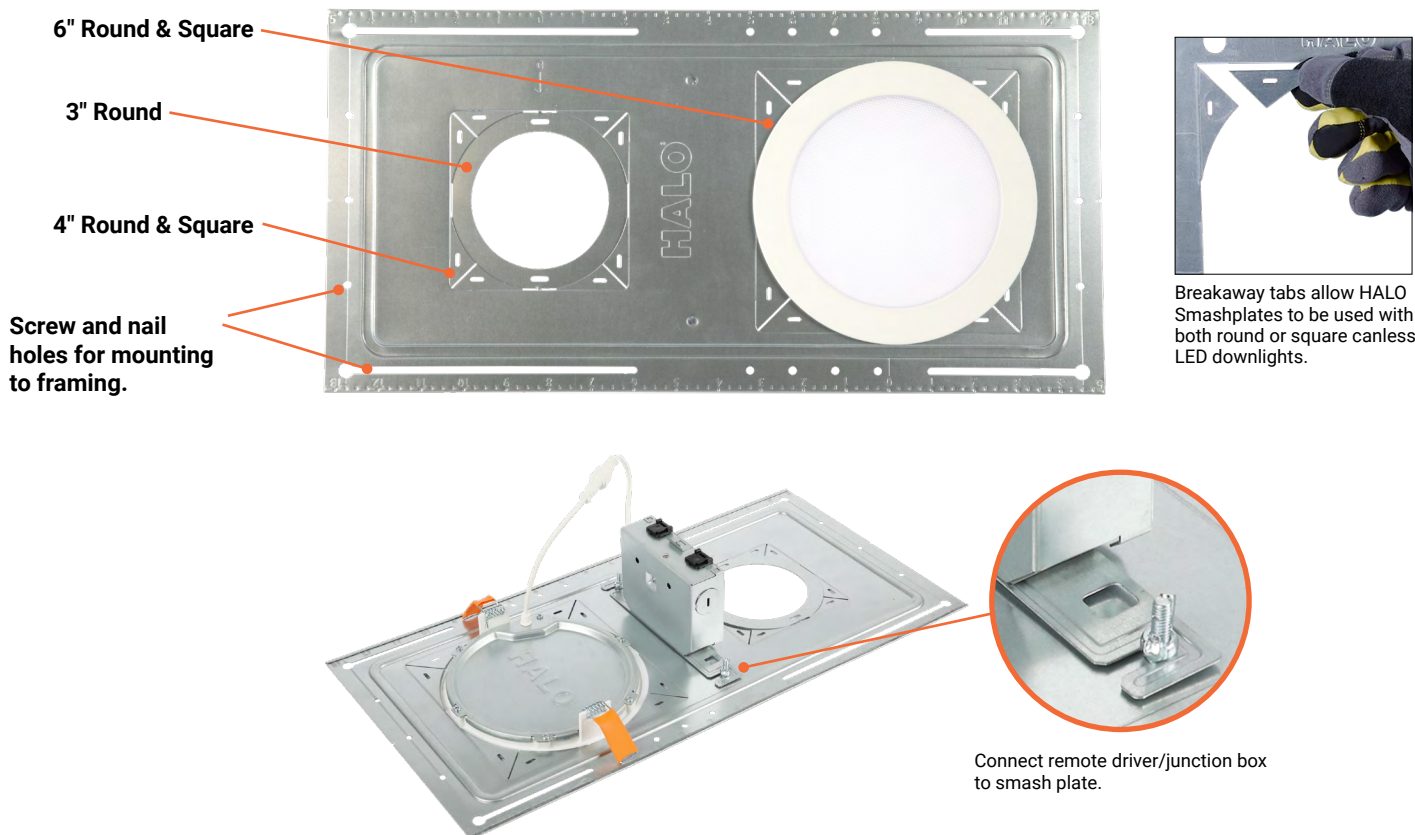


## Order Information

Catalog Number	Description
SP346RS	3", 4", and 6" Canless New Construction Smash Plate

## Compatible Canless Fixtures

3" Canless Fixtures	LT3-DM, HLA3, HLB3
4" Canless Fixtures	RA4-DM, CJB4, HLA4, HLBC4, HLB4, HLBE4, RL4-DM, RLNL4, LT4-DM, ML4, LCR4, SMD4-DM
6" Canless Fixtures	RA6-DM, CJB6, HLBC6, HLB6, HLBE6, RL6-DM, RLNL6, LT6-DM, LCR6, SMD6-DM



## Specification Features

### Plate Frame

- Galvanized steel plate with rolled edges for improve safety and structure
- Fits 3", 4", and 6" canless LED fixtures
- Corner knockouts convert 4" and 6" openings from round to square
- Wingnuts provide toolless attachment of the canless fixture's remote driver/junction box to the smash plate for wiring during the rough-in phase
- Size: 18.25" x 9.05"

### Mounting

- Mounting holes and slots enable full coverage between 12- and 24-inch joists
- For precise positioning, V notches facilitate the use of laser lines or guide strings
- Imprinted measurement scale for consistent placement

### Compliance

- Can be used to meet local code requirements where install from below fixtures must be supported directly by building structure
- Contains no mercury or lead and is RoHS-compliant

### Warranty

- Five year limited warranty, consult website for details. [www.cooperlighting.com/warranty](http://www.cooperlighting.com/warranty)