

Project		Catalog #		Type	
Prepared by		Notes		Date	



HALO

New Construction Mounting Frames with Drywall Collar

4" & 6" New Construction Mounting Frames with 1/2" drywall collar for round canless LED downlights

Typical Applications

Office • Healthcare • Hospitality • Institutional • Mixed-Use/Retail • Residential

Interactive Menu

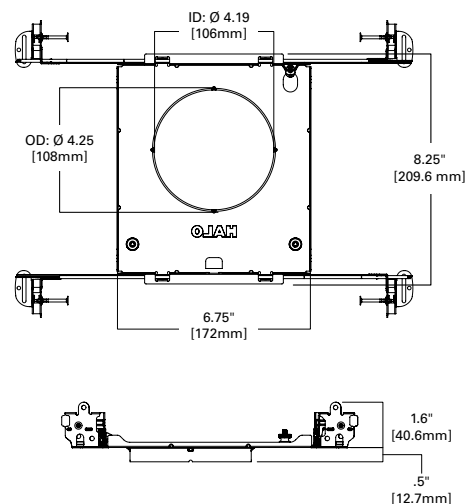
- Order Information page 2
- Photometric Data page 2
- Connected Systems
- Product Warranty

Top Product Features

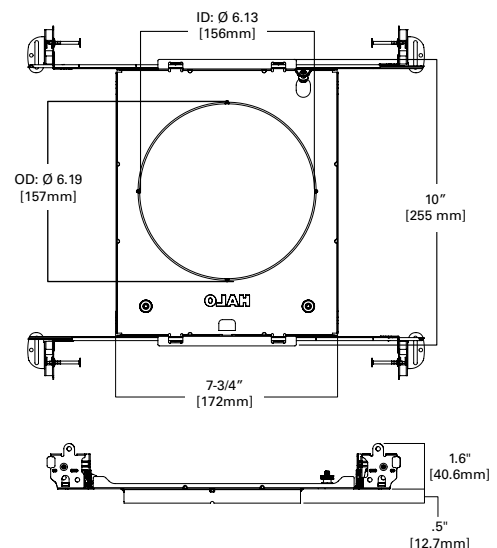
- Use in New Construction/Remodeling projects where round "install from below" canless LED downlights are installed
- 1/2" collar for easier locating and cutting - notched at 90° intervals for laser centering
- Reserve the fixture's location in the ceiling with 8" to 24" wide screw-locking hanger bars
- Captive integrated thumbscrews hold HALO canless junction boxes to the frame during the rough-in phase
- Use to meet local code requirements where canless fixtures need to be supported by building structure

Dimensional and Mounting Details

4" - MF4RC



6" - MF6RC



Order Information

Mounting Frame	Compatible Canless HALO Fixtures (Sold Separately)
MF4RC = 4" round mounting frame with drywall collar	HALO HLA4 = 4" Slim Round Canless Adjustable HLA4S = 4" Slim Square Canless Adjustable HLB4 = 4" Slim Round Canless Downlight (Including HLBE4, HLBSL4, HLBPH4, HLB4-WIZ) HLB4SP = 4" Slim Square Canless Downlight (w/ Round Cutout) HLBC4 = 4" Slim Round Recessed Canless Downlight HLB4S = 4" Slim Square Canless Downlight LT4-DM = 4" Round Recessed Canless Downlight RL4-DM = 4" Round Recessed Canless Downlight RLS4 = 4" Regressed Sloped Ceiling Canless Adjustable Downlight CJB4 = 4" Round Integrated JBox Downlight ML4 = 4" Round Canless Wall Wash and Downlight LCR4 = 4" Round LED Wall Wash and Downlight H245RICAT = 4" Remodel Housing HALO Commercial PR4R* HC4R*
MF6RC = 6" round mounting frame with drywall collar	HALO HLB6 = 6" Slim Round Canless Downlight (Including HLBE6, HLBSL6, HLBPH6, HLB6-WIZ) HLBC6 = 6" Slim Round Recessed Canless Downlight LT6-DM = 6" Round Recessed Canless Downlight RL6-DM = 6" Round Recessed Canless Downlight RA6-DM = 6" Round Recessed Adjustable Canless Gimbal RLS6 = 6" Regressed Slope Ceiling Canless Adjustable Downlight CJB6 = 6" Round Integrated JBox Downlight LCR6 = 6" Round LED Wall Wash and Downlight HALO Commercial PR6R* HC56R*

Product Specifications

Mounting Frame

- Galvanized steel mounting frame with offset aperture and integral bar hanger receivers
- Locking screws provide positive horizontal locking
- Captive thumbscrews provide toolless attachment of the fixture's remote driver / junction box to the mounting frame for wiring during rough-in phase
- 1/2" drywall collar included to improve hole locating and drywall cutting process
- Collar is notched at 90° intervals for laser centering

Bar Hangers

- GOT NAIL! Gen 3 bar hangers adjust from 8" to 24" wide
- Pass thru feature allows shortening without removal
- Captive nail penetrates standard and engineered lumber
- Mounting flange levels platform with ceiling
- Integral clip attaches directly to tee-bar.

Compliance

- Can be used to meet local code requirements where install from below fixture fittings must be supported directly by building structure

Warranty

- One year limited warranty, consult website for details.
www.cooperlighting.com/global/warranty