

E26 6" Trim Series

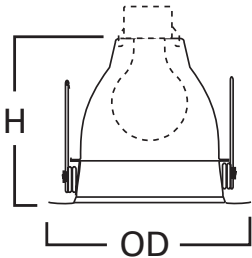
DESCRIPTION

Self flanged Air-Tite™ reflector trim in the 6" trim family for use in recessed downlighting. Compatible for use in Halo and other housings.

Catalog #		Type
Project		
Comments		Date
Prepared by		

SPECIFICATION FEATURES

- Self-flanged reflector with torsion spring retention
- Accepts a wide range of lamps
- Makes installation Air-Tite regardless of housing used
- Socket support reflector



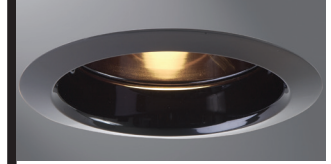
Dimensions:

H: 5" [127mm]

OD: 7-1/4" [184mm]

Housings		Max Lamp Compatibility
H7ICT	H7ICAT	40W A19, 50W PAR30S, 75W PAR30L, 65W BR38, 65W BR30, 75W R30, 65W BR40
H7RICT	H7RICAT	40W A19, 50W PAR30S, 75W PAR30L, 65W BR38, 45W BR30, 65W BR40, 50W R30, 65W R40
E7ICAT	E7RICAT	40W A19, 50W PAR30S, 75W PAR30L, 65W PAR38, 65W BR30, 65W BR40
H7UICAT		60W A19, 75W PAR30S, 75W PAR30L, 75W PAR38, 85W BR30, 100W R30,
H7ICTNB		40W A19, 50W PAR30S, 75W PAR30L, 65W PAR38, 65W BR30, 75W R30, 65W, BR40
H7ICATNB		40W A19, 50W PAR30S, 75W PAR30L, 65W PAR38, 65W BR30, 65W BR40
E7ICATNB		100W A19, 150W A21, 50W PAR30S, 75W PAR30L, 150W PAR38, 85W BR30, 100W R30
H7T		150W A21, 50W PAR30S, 75W PAR30L, 65W BR30, 75W R30, 150W PAR38
H7RT		100W A19, 150W A21, 75W PAR30S, 75W PAR30L, 150W PAR38, 65W BR30
E7TAT		100W A19, 150W A21, 50W PAR30S, 75W PAR30L, 150W PAR38, 65W BR30
E7RTAT		100W A19, 150W A21, 50W PAR30S, 75W PAR30L, 150W PAR38, 65W BR30
H7TNB		100W A19, 150W A21, 75W PAR30S, 150W PAR38, 85W BR30, 100W R30
H7TATNB		100W A19, 150W A21, 75W PAR30S, 75W PAR30L, 150W PAR38, 65W BR30

Compatible with Halogen, Incandescent, LED* or CFL* lamps.



30SBAT

Black Specular Trim,
Black Specular Reflector

30SBAT

6-Inch Super Trim™
Air-Tite™ Reflector

ORDERING INFORMATION

SAMPLE NUMBER: 30SBAT

Trim	Finish
30SBAT= 6" Specular Black Reflector, Black Trim	BK=Black

HALO HOUSING COMPATIBILITY

Trim #	Style	H7ICT	H7ICAT	H7RICT	H7RICAT	E7ICAT	E7RICAT	H7UICAT	H7ICTNB
30SBAT	Reflector	•	•	•	•	•	•	•	•
		H7ICATNB	E7ICATNB	H27ICAT	H27RICAT	E27ICAT	E27RICAT		
		•	•						
		H7T	H7TCP	H7RT	E7TAT	E7RTAT	H7TNB	E7TATNB	H27T
		•		•	•	•	•		
		H27RT	E27TAT	E27RTAT					

For use in select other's housings, refer to U.L. classification list at www.cooperlighting.com.

*UL1993 listed LED & CFL equivalent lamps permitted. Consult lamp manufacturer for conditions of use. Cooper Lighting Solutions does not warranty the lamp.

airtite™

UL US
LISTED

For use in Halo listed housings.

CLASSIFIED
UL US

Select trims are classified for use in others housings.
See www.cooperlighting.com.