



HALO Commercial

HC8

8-inch LED Downlight & Wall Wash

HC8

8-inch LED Downlight and Wall Wash

Versatile 8-inch commercial downlight optimized for lumen efficiency and optical performance. Reflectors offered in narrow, medium, wide distribution for efficiency in lumen delivery. Value priced and contractor installation friendly with connected lighting options available.





LED Modules



HM8 Low Lumen LED Module

1500 lumens | 2000 lumens

HM8 Mid Lumen LED Module

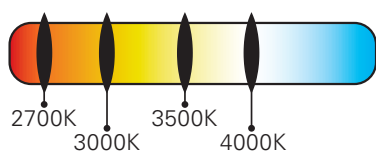
3000 lumens | 4000 lumens

HM8 High Lumen LED Module

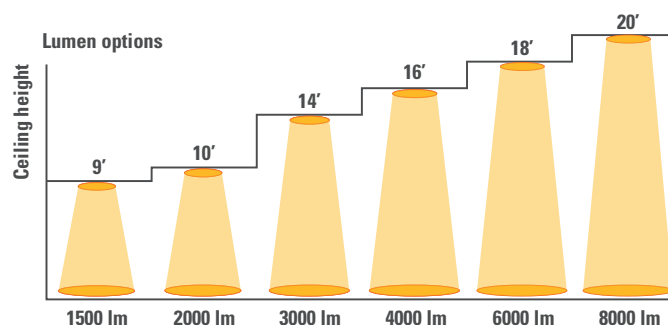
6000 lumens | 8000 lumens

Color temperature

The HCC8 LED modules are available in a discrete selection of correlated color temperatures (CCT). The user can choose color temperatures 2700K, 3000K, 3500K and 4000K in 80 or 90 CRI.



Lumen options



Nominal values for 15 - 20 footcandles at nadir.

Reflectors



Specular Clear



Semi-Specular (Haze)



Black Baffle



White Baffle



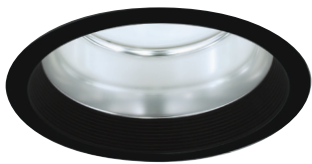
White



Wall Wash



White Polymer
(Dead Front)



Black Baffle
with Black Flange

Beam distribution options*



narrow
13°



medium
37°



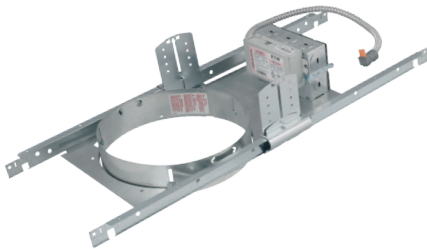
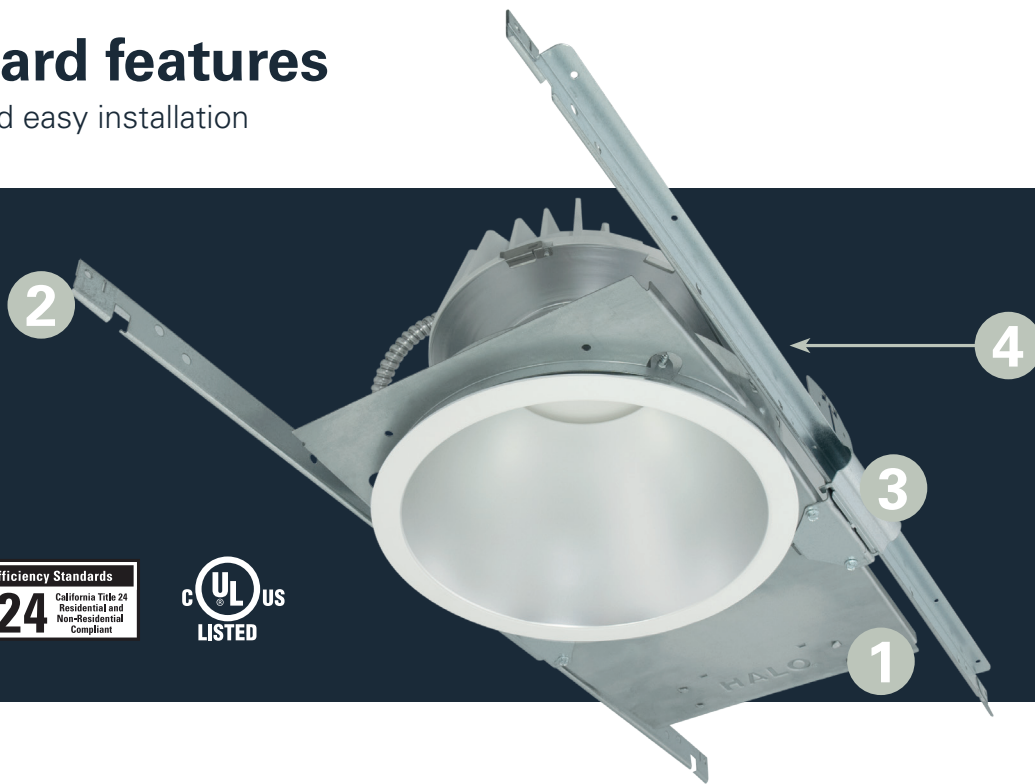
wide
71°

Beam Distribution*			
Code	Distribution	Spacing Criteria	Beam Angle
ND	Narrow	0.24	13°
MD	Medium	0.59	37°
WD	Wide	1.08	71°

* Nominal values may vary depending on selected CRI/CCT and reflector finish.

Standard features

for quick and easy installation



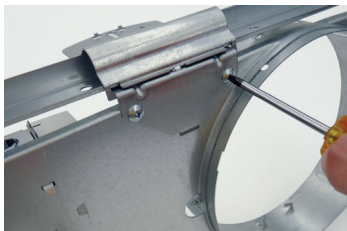
1. Housing Frame

- a. Boat-shaped galvanized steel frames with die-formed aperture
- b. New construction or remodeling installation with boat shaped frame
- c. Plaster lip collar pre-set to 1/2" and adjusts for ceilings up to 1-1/2" thick



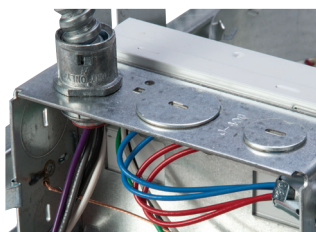
2. No Fuss Bar Hangers™

- a. Pre-installed and centered mounting bars
- b. Bars lock to tee grid with screwdriver or pliers
- c. Centering marks on the bar bracket



3. Adjustable Mounting Brackets

- a. Bar brackets adjust 2" vertically from above the ceiling or through the aperture
- b. Brackets for use with the included "No Fuss" mounting bars or with 1/2" EMT
- c. Brackets are removable for remodel installation from below the ceiling



4. Junction box

- a. Listed for (8) #12 AWG 90° C conductors (4-in/4-out)
- b. Listed for feed through branch wiring
- c. (3) 1/2" and (2) 3/4" trade size pry-outs
- d. Low voltage barrier section for 0-10V dimming wires
- e. (3) 4-port push wire nuts (1-port is fixture connection)

8" HC8 LED Downlight & Wall Wash

8-inch aperture LED downlight offered in narrow, medium, wide, and wall wash distributions ideal for general area lighting. Lumen options range from 1500 to 8000 lumens in color temperatures of 2700K, 3000K, 3500K, and 4000K; in 80 or 90CRI. Luminaire is airtight and can be installed in new construction or below the finished ceiling in remodeling applications. Intended for office spaces, healthcare, hospitality, and institutional uses.

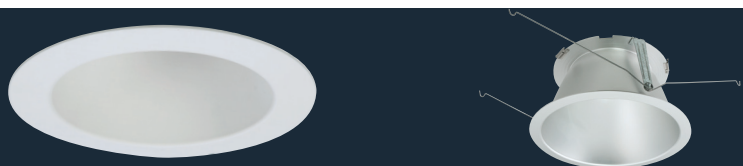
Order Information

SAMPLE ORDER NUMBER: HC820D010REM7 – HM81520835 - 81MDC

A complete luminaire consists of a mounting frame, LED module, and reflector; ordered separately

Mounting Frame	Lumens (nominal)	Input / Control	Options	Accessories
HC8 = 8" new construction and remodeler housing HC8CP = 8" new construction and remodeler housing, CCEA Chicago Plenum rated	15 = 1500 lumens 20 = 2000 lumens 30 = 3000 lumens 40 = 4000 lumens 60 = 6000 lumens ⁽¹⁾ 80 = 8000 lumens ⁽¹⁾	D010 = 120-277VAC 50/60Hz, 0-10V analog, 1%-100% dimming Canada option D010347 = 347VAC 50/60Hz 0-10V analog, 1%-100% dimming LED driver; for 1500, 2000, 3000, 4000 lumen models only (Canada only) ⁽²⁾ D010X347 = step down transformer factory installed with the standard "D010" 120V-277V LED driver, for 6000 and 8000 lumen models only (Canada only) ⁽²⁾ DLV = Distributed low voltage dimming (1%-100%) driver. For use with Cooper Lighting Solutions' DLVP system only. Refer to DLVP low-voltage power module and DLVP specifications for details. ⁽²⁾	REM7 = 7 watt emergency battery backup with remote test / indicator light, use with D010 only ^{(2) (4)} REM14 = 14 watt emergency battery backup with remote test / indicator light, use with D010 only ^{(2) (4)} IEM7 = integral 7 watt emergency battery backup with integral test / indicator light, use with D010 only ^{(2) (4)} IEM14 = integral 14 watt emergency battery backup with integral test / indicator light, use with D010 only ^{(2) (4)} B0D7ST = 7.5 watt Bodine self-test diagnostic emergency module with remote test / indicator light, use with D010 only ⁽²⁾ WTA = Factory installed WaveLinX Sensor Kit ^{(2) (8)} WTK = Factory installed WaveLinX Lite Sensor Kit ⁽⁹⁾ REM7V = 7 watt emergency battery backup with remote test / indicator light, use with DLV only ^{(2) (3) (4)} REM14V = 14 watt emergency battery backup with remote test / indicator light, use with DLV only ^{(2) (3) (4)} IEM7V = integral 7 watt emergency battery backup with integral test / indicator light, use with DLV only ^{(2) (3) (4)} IEM14V = integral 14 watt emergency battery backup with integral test / indicator light, use with DLV only ^{(2) (3) (4)}	HB128APK = L channel hanger bar, 26", pair (replacement part kit) RMB22 = adjustable wood joist mounting bars, pair, extend to 22" WTA = Field installed WaveLinX Sensor Kit ^{(2) (8)} WTK = Field installed WaveLinX Lite Sensor Kit ⁽⁹⁾
Notes	Notes (1) Marked Spacing: Center to Center of Adjacent Luminaires = 36" Center of Luminaire to Building Member = 18" Minimum overhead = 0.5"	Notes (2) Not available with CP version	Notes (2) Not available with CP version (3) ULus for U.S. only (4) Emergency battery backup options are Non-IC only. (8) WTA = WaveLinX tile mount sensor kit for daylight dimming, PIR motion sensing, and optional RLTS - Real Time Location Services, use with D010 only (Refer to WaveLinX system specifications) (9) WTK = WaveLinX Lite tile mount sensor kit for daylight dimming, PIR motion sensing, use with D010 only (Refer to WaveLinX Lite system specifications)	Notes (2) Not available with CP version (8) WTA = WaveLinX tile mount sensor kit for daylight dimming, PIR motion sensing, and optional RLTS - Real Time Location Services, use with D010 only (Refer to WaveLinX system specifications) (9) WTK = WaveLinX Lite tile mount sensor kit for daylight dimming, PIR motion sensing, use with D010 only (Refer to WaveLinX Lite system specifications)

Module	Lumens (nominal)	CRI / CCT (minimum)	
HM8 = 8" module	1520 = 1500, 2000 lumens 3040 = 3000, 4000 lumens 6080 = 6000, 8000 lumens	827 = 80 CRI, 2700K CCT 830 = 80 CRI, 3000K CCT 835 = 80 CRI, 3500K CCT 840 = 80 CRI, 4000K CCT	927 = 90 CRI, 2700K CCT 930 = 90 CRI, 3000K CCT 935 = 90 CRI, 3500K CCT 940 = 90 CRI, 4000K CCT



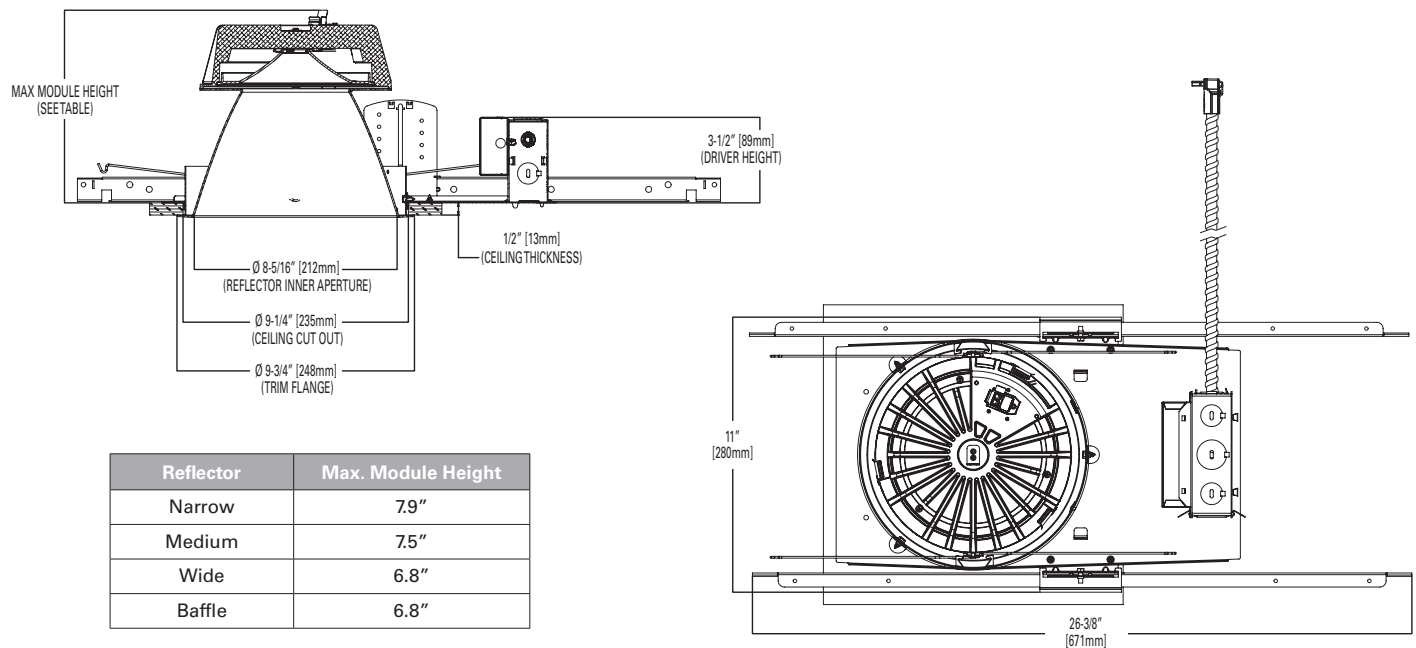
Precision formed 8-inch reflectors designed to deliver narrow, medium and wide beam distributions. A non-conductive polymer reflector may be used to meet 'dead-front' requirements.

Reflector	Distribution ⁽⁶⁾	Finish	Flange	Accessories
81 = 8" conical reflector	ND = narrow reflector 13° beam angle, 0.24 SC MD = medium reflector 37° beam angle, 0.60 SC WD = wide reflector 71° beam angle, 1.08 SC RWW = rotatable wall wash with linear spread lens	C = Specular clear H = Semi-specular clear W = White (white flange)	Blank = Polished flange standard with C & H reflectors Blank = White flange standard with W reflector WF = White flange option available with C & H reflectors	81RWWPK = Rotatable wall wash replacement kit ⁽⁷⁾
81 = 8" baffle reflector	WD = wide baffle 71° beam angle, 1.08 SC RWW = rotatable wall wash with linear spread lens (wide beam baffle with lens wall wash)	BB = Black baffle WB = White baffle	Blank = White flange standard with BB & WB BF = Black Flange option with BB	
81PS = 8" non-conductive polymer conical reflector ⁽⁵⁾	MD = medium reflector 37° beam angle, 0.60 SC	W = White (white flange)	Blank = White flange standard with W reflector	
Integral Emergency				
81 = 8" conical reflector for integral emergency only	ND = narrow reflector 13° beam angle, 0.24 SC MD = medium reflector 37° beam angle, 0.60 SC WD = wide reflector 71° beam angle, 1.08 SC	C = Specular clear H = Semi-specular clear W = White (white flange)	Blank = Polished flange standard with C & H reflectors Blank = White flange standard with W reflector WF = White flange option available with C & H reflectors	IEM = Reflector for IEM only
81 = 8" baffle reflector for integral emergency only	WD = wide baffle 71° beam angle, 1.08 SC	BB = Black baffle WB = White baffle	Blank = White flange standard with BB & WB BF = Black Flange option with BB	IEM = Reflector for IEM only
Notes	Notes	Notes	Notes	Notes
(5) 81PS reflector is for Non-IC environment only, and up to 4000 lumens only	(6) Values are nominal, based on specular clear reflector, other may vary.			(7) For use with 81RWW only.

Energy Data - HC8 Series

Nominal Lumens Housing Model Number	1500 lumen HCC8*15		2000 lumen HCC8*20		3000 lumen HCC8*30		4000 lumen HCC8*40		6000 lumen HCC8*60		8000 lumen HCC8*80	
LED Module	Low Lumen Module		Low Lumen Module		Mid Lumen Module		Mid Lumen Module		High Lumen Module		High Lumen Module	
Input Voltage 120-277VAC	120V	277V	120V	277V	120V	277V	120V	277V	120V	277V	120V	277V
Current (A)	0.119	0.055	0.176	0.082	0.228	0.102	0.345	0.15	0.5	0.22	0.636	0.29
Power (W)	14.2	14.9	21.1	21.4	27.2	27	41.3	40.7	59.7	59	75.8	75
In-rush (A)	0.212	0.85	0.588	0.624	0.898	1.7	1.05	2.23	5.4	10.8	4.9	9.8
In-rush Duration (ms)	0.28	0.32	0.3	0.38	0.36	0.38	0.32	0.34	0.12	0.154	0.13	0.156
THD (%)	7.8	16.3	8.8	11.2	9.7	9.3	10.06	14.01	12.4	10.8	7.2	12.8
PF ≥	≥ 0.90											
Minimum starting temperature	-40°C (-40°F)											

Dimensions - HC8 Series



8" HC8R LED Retrofit Downlight

8-inch aperture LED retrofit downlight is designed for installation into other 8.73" to 10.3" (HC8R) or 12" (HC812R) nominal aperture commercial housings. The retrofit reflector offered in medium distribution is ideal for general area lighting. Lumen packages range 1500 to 8000 lumens in color temperatures of 2700K, 3000K, 3500K, and 4000K; in 80 or 90CRI. Installs from below the ceiling into existing open frame recessed housings. Applications include office spaces, healthcare, hospitality, and other institutional uses.

Order Information

SAMPLE ORDER NUMBER: HC8R20D010 – HM81520835 - 81MDC

A complete luminaire consists of a retrofit kit, LED module, and reflector; ordered separately

Retrofit Kit	Lumens (nominal)	Input / Control	Options	Accessories
HC8R = 8" to 10" retrofit kit collar ring and junction box/driver pack fit 8.73" to 10.3" nominal ceiling cutout apertures with preinstalled 11.3" O.D. oversized matte white trim ring HC812R = 8" to 12" retrofit kit collar ring and junction box/driver pack fit 8.73" to 12" nominal ceiling cutout apertures with preinstalled 15.375" O.D. oversized matte white trim ring	15 = 1500 lumens 20 = 2000 lumens 30 = 3000 lumens 40 = 4000 lumens 60 = 6000 lumens ⁽¹⁾ 80 = 8000 lumens ⁽¹⁾	D010 = 120-277VAC 50/60Hz, 0-10V analog, 1%-100% dimming Canada option D010347 = 347VAC 50/60Hz 0-10V analog 1%-100% dimming LED driver; for 1500, 2000, 3000, 4000 lumen models only (Canada only) ⁽²⁾ D010X347 = step down transformer factory installed with the standard "D010" 120V-277V LED driver, for 6000 and 8000 lumen models only (Canada only) ⁽²⁾	REM7 = 7 watt emergency battery backup with remote test / indicator light, use with D010 only ⁽³⁾ REM14 = 14 watt emergency battery backup with remote test / indicator light, use with D010 only ⁽³⁾ B0D7ST = 7.5 watt Bodine self-test diagnostic emergency module with remote test / indicator light, use with D010 only WTA = Factory installed WaveLinX wireless sensor kit ⁽⁷⁾ WTK = Factory installed WaveLinX Lite Sensor Kit ⁽²⁾	WTA = Field installed WaveLinX wireless sensor kit ⁽⁷⁾ WTK = Field installed WaveLinX Lite Sensor Kit ⁽²⁾
Notes	Notes	Notes	Notes	Notes
	(1) Marked Spacing: Center to Center of Adjacent Luminaires = 36" Center of Luminaire to Building Member = 18" Minimum overhead = 0.5"	(2) Not available with CP version	(3) Emergency battery backup options are Non-IC only. (7) WTA = WaveLinX tile mount sensor kit for daylight dimming, PIR motion sensing, and optional RLTS - Real Time Location Services, use with D010 only (Refer to WaveLinX system specifications) (2) WTK = WaveLinX Lite tile mount sensor kit for daylight dimming, PIR motion sensing, use with D010 only (Refer to WaveLinX Lite system specifications)	(7) WTA = WaveLinX tile mount sensor kit for daylight dimming, PIR motion sensing, and optional RLTS - Real Time Location Services, use with D010 only (Refer to WaveLinX system specifications) (2) WTK = WaveLinX Lite tile mount sensor kit for daylight dimming, PIR motion sensing, use with D010 only (Refer to WaveLinX Lite system specifications)

Module	Lumens (nominal)	CRI / CCT (minimum)	
HM8 = 8" module	1520 = 1500, 2000 lumens 3040 = 3000, 4000 lumens 6080 = 6000, 8000 lumens	827 = 80 CRI, 2700K CCT 830 = 80 CRI, 3000K CCT 835 = 80 CRI, 3500K CCT 840 = 80 CRI, 4000K CCT	927 = 90 CRI, 2700K CCT 930 = 90 CRI, 3000K CCT 935 = 90 CRI, 3500K CCT 940 = 90 CRI, 4000K CCT



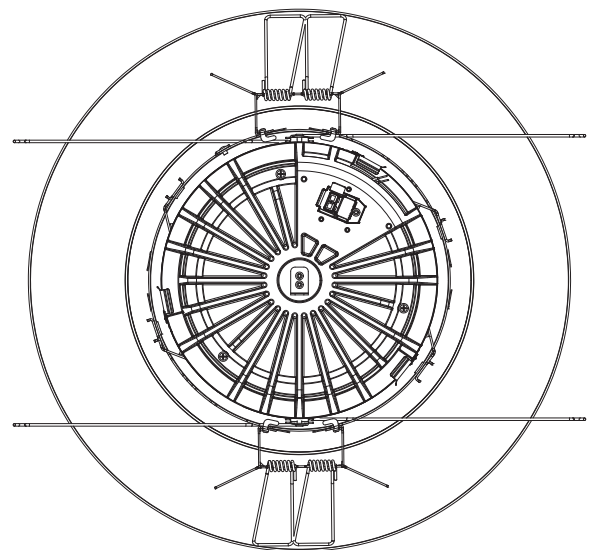
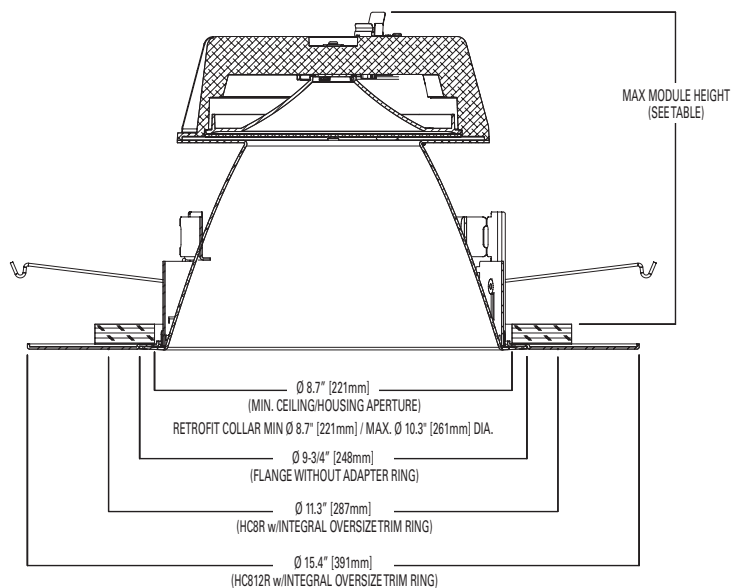
Precision formed 8-inch reflectors designed to deliver narrow, medium and wide beam distributions. A non-conductive polymer reflector may be used to meet 'dead-front' requirements.

Reflector	Distribution ⁽⁵⁾	Finish	Flange	Accessories
81 = 8" conical reflector	ND = narrow reflector 13° beam angle, 0.24 SC MD = medium reflector 37° beam angle, 0.60 SC WD = wide reflector 71° beam angle, 1.08 SC RWW = rotatable wall wash with linear spread lens	C = Specular clear H = Semi-specular clear W = White (white flange)	Blank = Polished flange standard with C & H reflectors Blank = White flange standard with W reflector WF = White flange option available with C & H reflectors	81RWWPK = Rotatable wall wash replacement kit ⁽⁶⁾
81 = 8" baffle reflector	WD = wide baffle 71° beam angle, 1.08 SC RWWW = rotatable wall wash with linear spread lens (wide beam baffle with lens wall wash)	BB = Black baffle WB = White baffle	Blank = White flange standard with BB & WB BF = Black Flange option with BB	
81PS = 8" non-conductive polymer conical reflector ⁽⁴⁾	MD = medium reflector 37° beam angle, 0.60 SC	W = White (white flange)	Blank = White flange standard with W reflector	
Notes	Notes	Notes	Notes	Notes
(4) 81PS reflector is for Non-IC environment only, and up to 4000 lumens only	(5) Values are nominal, based on specular clear reflector, other may vary.			(6) For use with 81RWW only.

Energy Data - HC8R Series

Nominal Lumens Housing Model Number	1500 lumen HCC8*15		2000 lumen HCC8*20		3000 lumen HCC8*30		4000 lumen HCC8*40		6000 lumen HCC8*60		8000 lumen HCC8*80	
LED Module	Low Lumen Module		Low Lumen Module		Mid Lumen Module		Mid Lumen Module		High Lumen Module		High Lumen Module	
Input Voltage 120-277VAC	120V	277V	120V	277V	120V	277V	120V	277V	120V	277V	120V	277V
Current (A)	0.119	0.055	0.176	0.082	0.228	0.102	0.345	0.15	0.5	0.22	0.636	0.29
Power (W)	14.2	14.9	21.1	21.4	27.2	27	41.3	40.7	59.7	59	75.8	75
In-rush (A)	0.212	0.85	0.588	0.624	0.898	1.7	1.05	2.23	5.4	10.8	4.9	9.8
In-rush Duration (ms)	0.28	0.32	0.3	0.38	0.36	0.38	0.32	0.34	0.12	0.154	0.13	0.156
THD (%)	7.8	16.3	8.8	11.2	9.7	9.3	10.06	14.01	12.4	10.8	7.2	12.8
PF ≥	≥ 0.90											
Minimum starting temperature	-40°C (-40°F)											

Dimensions - HC8R Series



HC8R



HC812R



HALO Commercial

Energy Efficiency + Value

Halo Commercial achieves the perfect balance of optical control and efficiency to deliver lower watts per square foot in meeting commercial lighting energy codes and provide uniform beam distributions.

Design/build, tenant improvement, hospitality and institutional projects will appreciate the Halo Commercial balance of performance and budget-minded design.

Contractor and Distributor Friendly

- Housings ship complete with No-Fuss bar hangers (no additional bars or C-channel to assemble)
- No-Fuss bars lock to T-grid by quick bend of a screwdriver or pliers (no screws to secure to grid)
- Boat-shaped plaster frame offers versatility in new construction and "old-work" remodeling
- Oversized junction box with 1/2" and 3/4" trade size pry-outs ships with quick wiring connectors
- Junction box low voltage section provides code-required barrier for 0-10V dimmer wiring
- Plaster lip collar is preset for 1/2" ceiling material, and adjusts up to 1-1/2"

Performance and Efficiency

- Reflector designs optimized for greater optical efficiency (lumen delivery) and beam distribution
- Greater efficiency allows maximized fixture spacing with good uniformity
- Maximized spacing achieves desired watts per square foot (fewer fixtures = less power)
- Control from industry standard 120V-277V, 0-10V 1% dimmable LED driver (optional 347V available where noted)
- Optional connected lighting control with Distributed Low Voltage Power system (DLVP), WaveLinx, and LumaWatt Pro - Enlighted*

Product Mix

- Mainstream offering meets market demand in 4-inch, 6-inch, and 8-inch downlights
- PR series offers contractors versatility of lumen and LED color select-ability on-site
- HC series offers discrete selection of lumen and LED color for design/build and tenant improvement projects

Connected Systems



WaveLinX Lite - WTK Tilemount Sensor

- Intuitive Android™ or Apple® iOS® app for basic system code compliant set up and configuration via Bluetooth
- Up to 28 unique areas per project site (WaveLinX Lite Bluetooth network)
- Up to 50 devices for an area, any one of 16 control zones, up to 6 occupancy sets, and custom lighting scenes
- Automatic occupancy or vacancy, sensor sensitivity, daylight dimming, etc. configurable through the app
- Refer to the WaveLinX system specifications for details



Device Security



Manual Dimmer



Occupancy Sensor



Daylighting Control



Manually Switched ON/OFF



Tuning Control

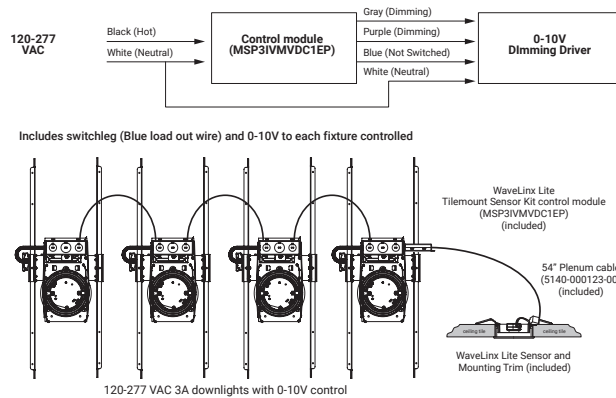


Lumen Maintenance Control

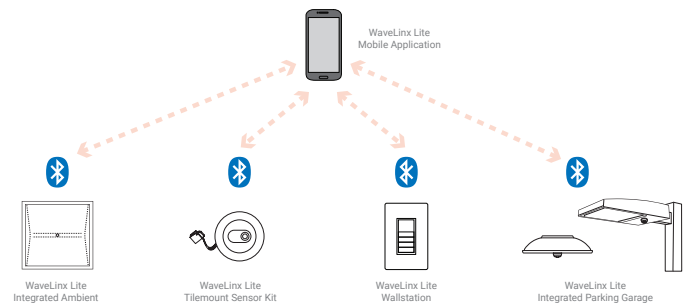


Scenes

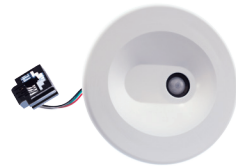
WaveLinX Lite WTK Tilemount Wiring Diagram



WaveLinX Lite Bluetooth Enabled System



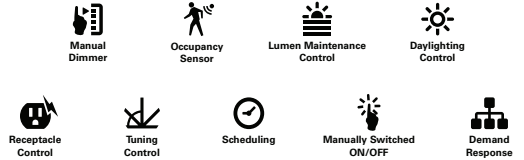
WaveLinX Wireless – WTA Tilemount Sensor



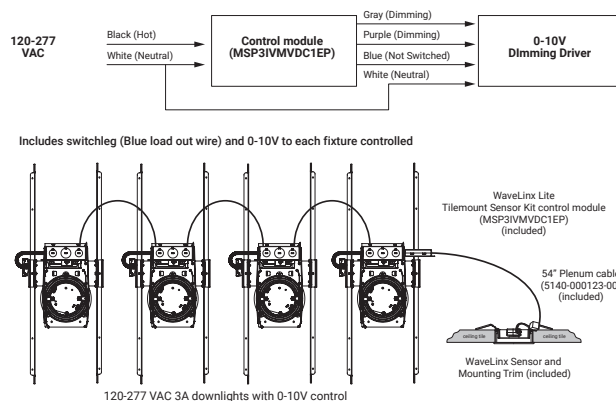
- WaveLinX Wireless functionality configures zones and customizes settings from one secure mobile app
- Automatic code commissioning that meets the strictest codes
- Fixtures and sensors integrate with Wireless Area Controller, Wall Stations, and Control Devices
- Stand-Alone Offices or Entire Building Network Installations



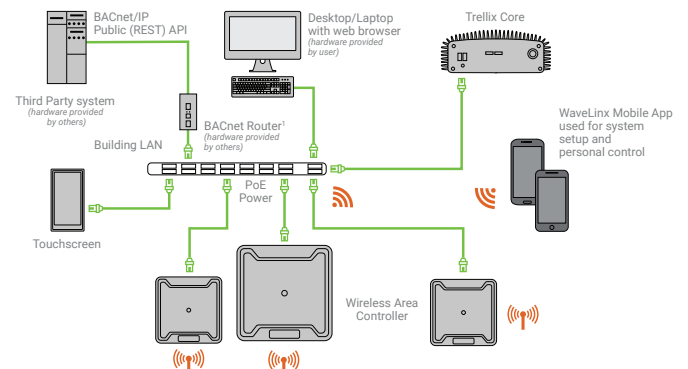
WaveLinX mobile app settings



WaveLinX Lite WTA Tilemount Wiring Diagram



WaveLinX Wireless Trellix Building Management Integration



Lighting Product Lines

Ametrix
AtLite
Corelite
Ephesus
Fail-Safe
HALO
HALO Commercial
Invue
io
IRiS
Lumark
Lumière
McGraw-Edison
Metalux
MWS
Neo-Ray
Portfolio
RSA
Shaper
Streetworks
Sure-Lites

Controls Product Lines

Fifth Light Technology
Greengate
iLight (International Only)
iLumin
Zero 88

Connected Lighting Systems

Distributed Low-Voltage Power
HALO Home
iLumin Plus
LumaWatt Pro
WaveLinx



Cooper Lighting Solutions
1121 Highway 74 South
Peachtree City, GA 30269
P: 770-486-4800
www.cooperlighting.com

Canada Sales
5925 McLaughlin Road
Mississauga, Ontario L5R 1B8
P: 905-501-3000
F: 905-501-3172

© 2020 Cooper Lighting Solutions
All Rights Reserved
Printed in USA
Publication No. BR517014EN
April 2021

All other trademarks are property of their respective owners.

Product availability, specifications, and compliances are subject to change without notice.