



# HALO Commercial

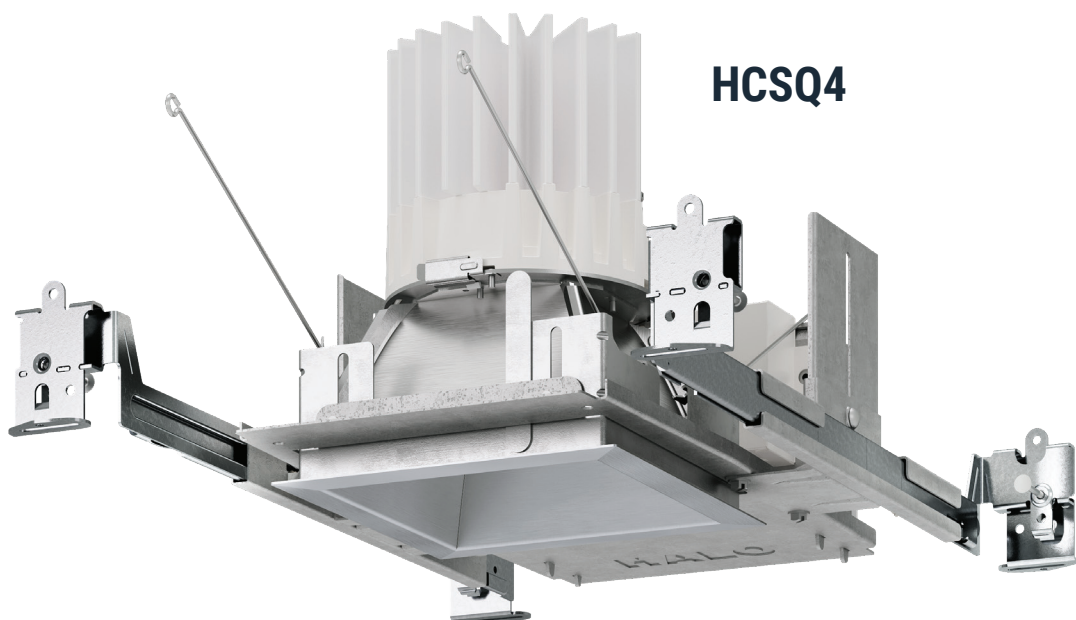
## HCSQ Series

4-inch & 6-inch Square  
LED Downlight & Wall Wash



# HCSQ Series

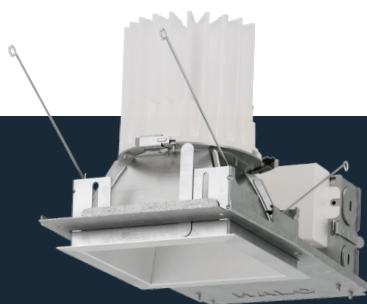
## Square Recessed Downlights



HCSQ4



HCSQ6



### Retrofit

Quickly convert HCSQ fixtures from new construction to retrofit with their boat-shaped mounting frame and removable hanger bars.

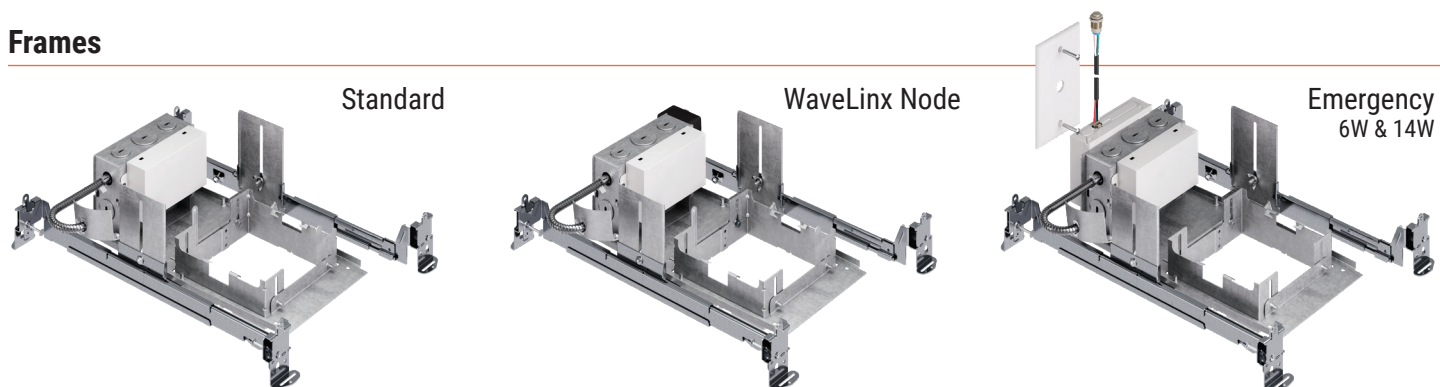


Choose the HCSQ Square Downlight Series for a comprehensive lighting solution that is sure to elevate any commercial space.

The HCSQ Square Downlight Series offers a comprehensive solution for the commercial professional. The sleek 4- and 6-inch square fixtures perfectly complement the popular HC Round Downlight Series. The HC/HCSQ Series share the same high-quality LED light engines to create consistency and reliable performance along with simplified ordering and stocking. Our precision-formed medium distribution aluminum reflectors have been expertly designed to minimize glare, providing unparalleled visual comfort. The HC/HCSQ Series offers complete fixture flexibility, with options from 500 to 6000 lumens in 5 distinct color temperatures at 80 or 90 CRI.



## Frames



## Features

- **Housing Frame** - Boat-shaped galvanized steel frame is designed to install in new construction or from below the finished ceiling.
- **Adjustable Bar Hangers** - Gen 3 bar hangers adjust from 10.5–24" with 2" of vertical play. Our grid clip and captive nail work in T-grid or framing.
- **Junction Box** - Listed for (8) #12 AWG 90° C conductors and feed through branch wiring with low voltage barrier section for 0–10V dimming wires.

LED Modules



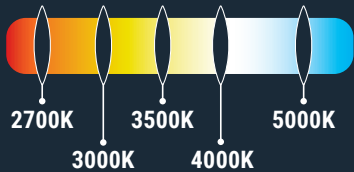
**HM4/HM6 Low Lumen LED Module**  
Lumens  
500 | 750 | 1000 | 1500 | 2000 | 2500



**HM4/HM6 Mid Lumen LED Module**  
Lumens  
3000 | 3500 | 4000



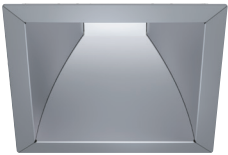
**HM4/HM6 High Lumen LED Module**  
Lumens  
4500 | 5000 | 5500 | 6000



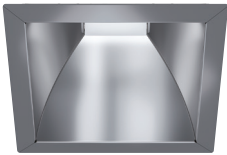
Our HM LED modules for the HC Series are available in 5 correlated color temperatures (CCT): 2700K, 3000K, 3500K, 4000K, and 5000K at 80 or 90 CRI.

Reflectors

Reflectors are precision formed aluminum in rigid square frames for corner stability. Plated and painted finishes meet commercial downlight requirements in specular clear, semi-specular (haze), matte white, and matte black.



semi-specular  
(haze)



specular clear



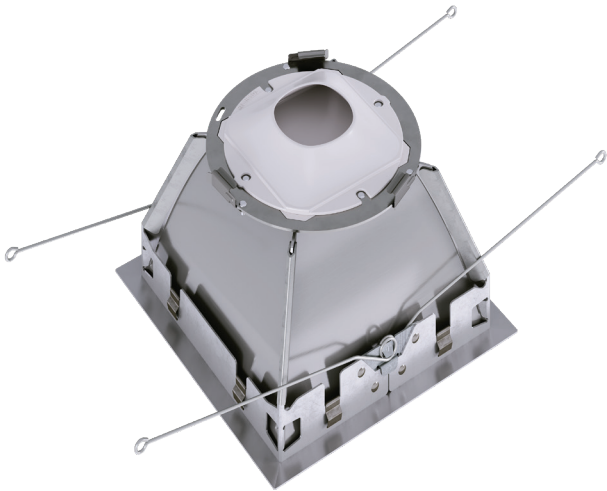
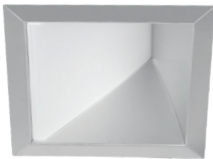
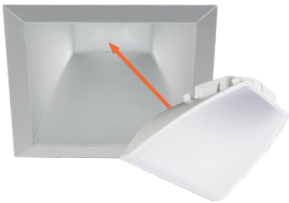
matte white



matte black

Wall Wash Inserts

Field-installed rotatable spread lensed wall wash accessory kits available.



Optical Design

Reflector geometry delivers medium distribution with nominal 55° beam angle and 1.0 spacing criteria. Reflectors feature deep regressed lens that balances maximum transmittance with shielding of LED pixelation.



HCSQ4  
54°

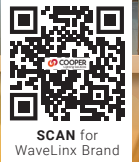


HCSQ6  
53°



# WaveLinx

- Digital Lighting  
Control  
Solutions



SCAN for  
WaveLinx Brand

## SIMPLE. SCALABLE. INSIGHTFUL.

### WaveLinx LITE



WaveLinx LITE is a cost effective, wireless digital lighting control system, with out-of-the-box functionality, that saves energy and meets code. Customize installations using the secure, simple WaveLinx mobile app.



SCAN for  
WaveLinx LITE

### WaveLinx PRO



WaveLinx PRO is a wireless lighting control solution, for connected spaces, that significantly reduces a building's energy consumption. From a single floor to an entire campus, WaveLinx PRO connects more than lighting assets; it shares aggregated sensor data with the WaveLinx CORE platform and other building systems, so building owners can improve operations, spaces environment, and tenants' experience using a desktop or mobile app.



SCAN for  
WaveLinx PRO



#### LITE Tilemount Sensor

The WLST tilemount sensor kit provides occupancy/vacancy sensing and daylight dimming capabilities as part of the innovative WaveLinx Bluetooth enabled system.



#### LITE Node

The WaveLinx LITE Node (OEM-WLN) is a wireless to 0-10V control module designed to be integrated into the luminaire. The LITE Node offers two continuous 0-10V output channels that can be used to control dim-to-off 0-10V LED drivers with auxiliary power.



#### PRO Tilemount Sensor

The WPST tilemount sensor kit provides occupancy/vacancy sensing and daylight dimming capabilities as part of the innovative WaveLinx Bluetooth enabled system.



#### PRO Node

The WaveLinx PRO Node (OEM-WPN) is a wireless to 0-10V control module designed to be integrated into the luminaire. The adapter offers two continuous 0-10V output channels that can be used to control dim-to-off 0-10V LED drivers with auxiliary power.

### Lighting Brands

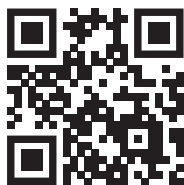
Ametrix  
AtLite  
Corelite  
Ephesus  
Fail-Safe  
HALO  
HALO Commercial  
Invue  
iO  
Iris  
Lumark  
LumarkAP  
Lumière  
McGraw-Edison  
Metalux  
MWS  
NeoRay  
Portfolio  
PrentaLux - 3D Printed Lighting  
RSA  
Shaper  
Streetworks  
Sure-Lites

### Controls Brands

Greengate  
Fifth Light  
Intelligent Lighting Controls

### Connected Lighting Systems and Smart Spaces Platform

WaveLinx  
Trellix Infrastructure



**SCAN**  
for more  
HALO Commercial  
information



**Cooper Lighting Solutions**  
1121 Highway 74 South  
Peachtree City, GA 30269  
P: 770-486-4800  
www.cooperlighting.com

Canada Sales  
5925 McLaughlin Road  
Mississauga, Ontario L5R 1B8  
P: 905-501-3000  
F: 905-501-3172

© 2024 Cooper Lighting Solutions  
All Rights Reserved  
Printed in USA  
Publication No. BR51719624  
September 2024

Cooper Lighting Solutions is a  
registered trademark.

All other trademarks are property  
of their respective owners.

Product availability, specifications,  
and compliances are subject to  
change without notice.