



HALO Commercial

PRS

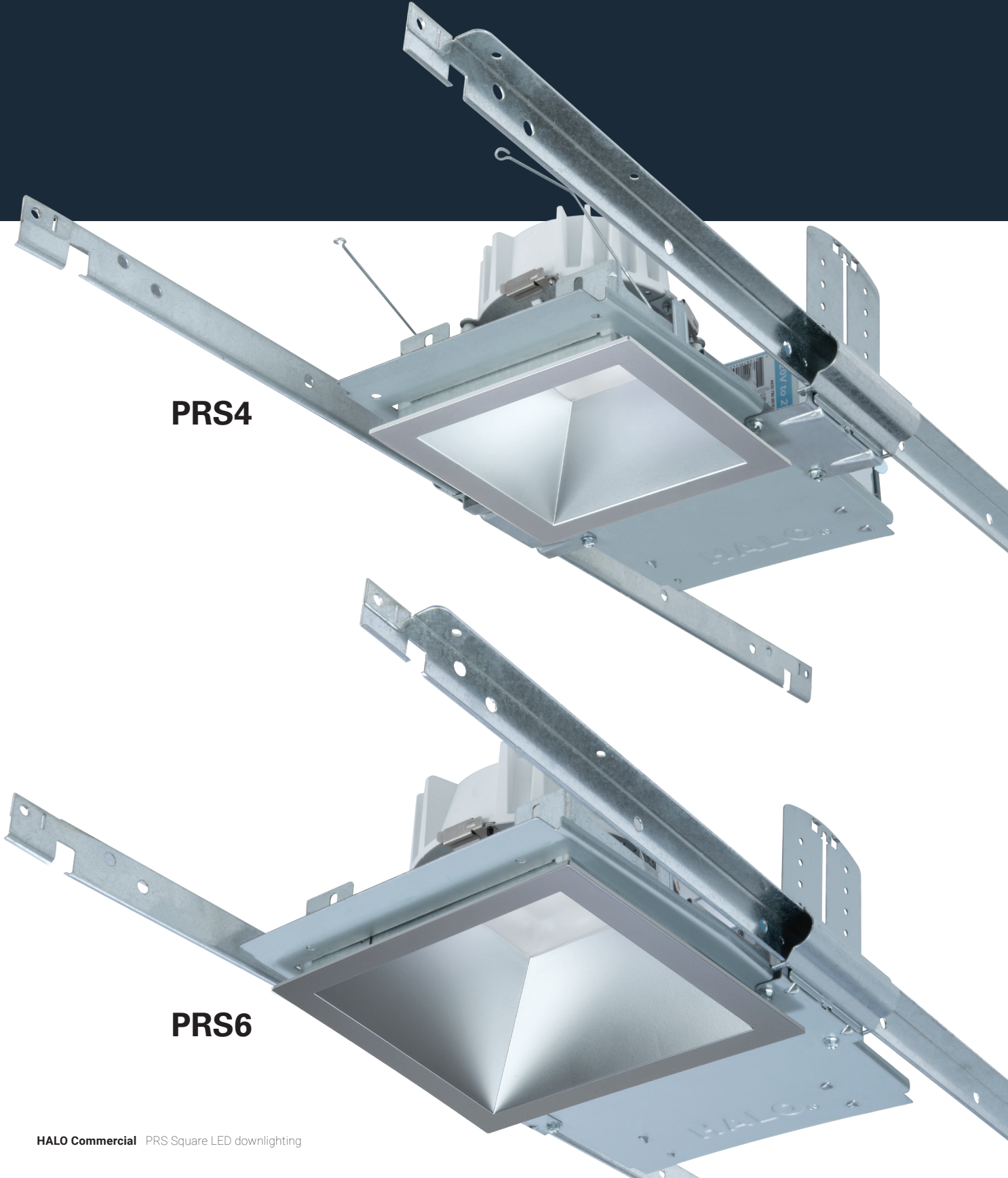
4-inch & 6-inch Square LED Downlight

PRS

4-inch and 6-inch Square LED Downlighting

PRS4

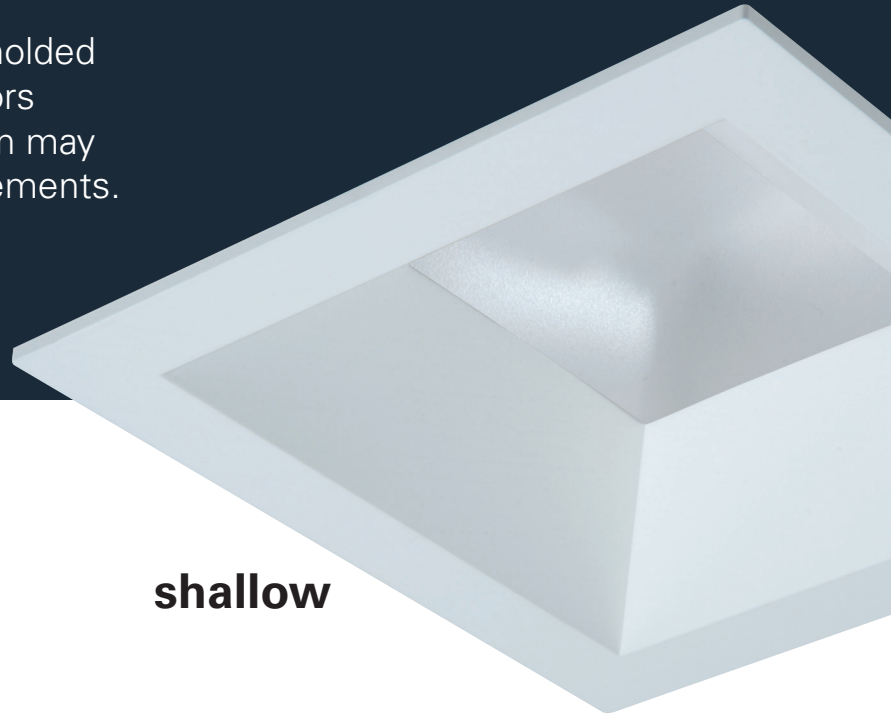
PRS6



Precision formed square reflectors

for refined corner detail

PRS series reflectors are injection molded for refined corner detail. The reflectors non-conductive polymer construction may be used to meet 'dead-front' requirements.

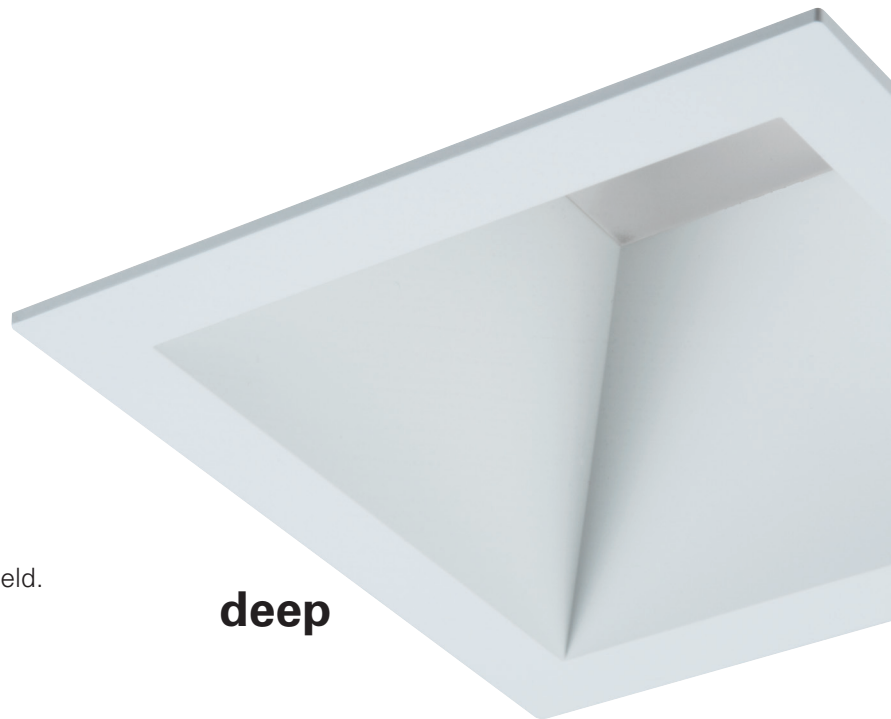


shallow



TIR* lens optics deliver a square beam in narrow, medium and wide distributions. Lenses are interchangeable allowing change if needed in the field.

**Total Internal Reflection*



deep

Nominal beam distribution options



narrow



medium

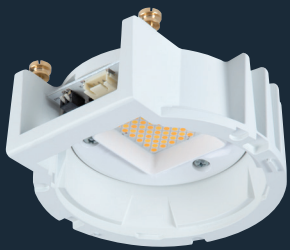


wide

Selectable lumens and SeleCCTable color temperature

Modular tool-less design

SM4

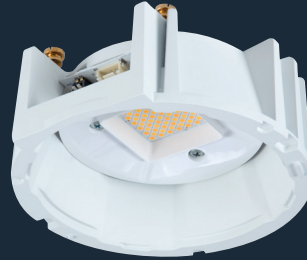


4-inch Low Lumen Module

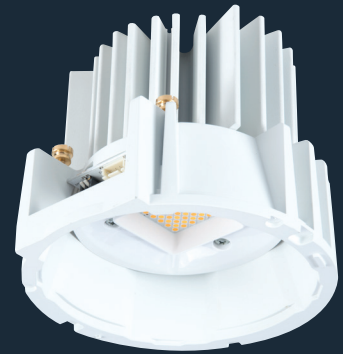


4-inch High Lumen Module

SM6



6-inch Low Lumen Module



6-inch High Lumen Module

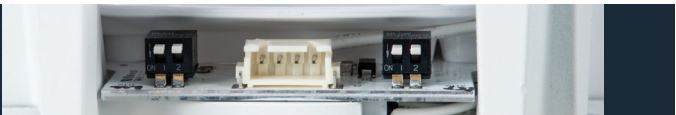
4-Inch LED modules

- Low lumen module selectable range
 - 1000-1500-2000 lumen
- High lumen module selectable range
 - 3000-4000 lumen
- Factory pre-sets for CCT and lumen
 - 3500K
 - low lumen module 2000 lumen
 - high lumen module 4000 lumen

6-Inch LED modules

- Low lumen module selectable range
 - 1000-1500-2000 lumen
- High lumen module selectable range
 - 2000-3000-4000 lumen
- Factory pre-sets for CCT and lumen
 - 3500K
 - low lumen module 2000 lumen
 - high lumen module 4000 lumen

Dip switch selection settings for color temperature & lumens



4-Inch Low Lumen Module			
4000K	<input type="checkbox"/>	2000 lm	<input type="checkbox"/>
3500K <i>(2 options)</i>	<input type="checkbox"/>	1500 lm <i>(2 options)</i>	<input type="checkbox"/>
3000K	<input type="checkbox"/>	1000 lm	<input type="checkbox"/>
SeleCCTable		Selectable Lumen	

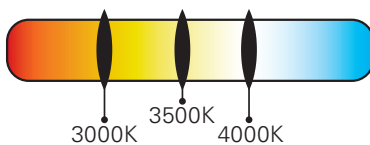
4-Inch High Lumen Module			
4000K	<input type="checkbox"/>	4000 lm	<input type="checkbox"/>
3500K <i>(2 options)</i>	<input type="checkbox"/>	3000 lm	<input type="checkbox"/>
3000K	<input type="checkbox"/>		
SeleCCTable		Selectable Lumen	

6-Inch Low Lumen Module			
4000K	<input type="checkbox"/>	2000 lm	<input type="checkbox"/>
3500K <i>(2 options)</i>	<input type="checkbox"/>	1500 lm <i>(2 options)</i>	<input type="checkbox"/>
3000K	<input type="checkbox"/>	1000 lm	<input type="checkbox"/>
SeleCCTable		Selectable Lumen	

6-Inch High Lumen Module			
4000K	<input type="checkbox"/>	4000 lm	<input type="checkbox"/>
3500K <i>(2 options)</i>	<input type="checkbox"/>	3000 lm <i>(2 options)</i>	<input type="checkbox"/>
3000K	<input type="checkbox"/>	2000 lm	<input type="checkbox"/>
SeleCCTable		Selectable Lumen	

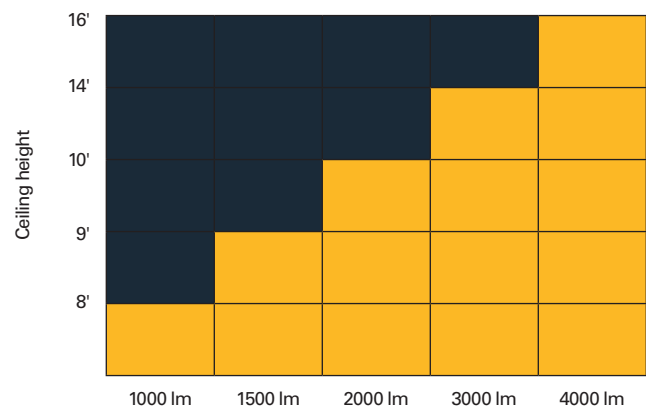
Field SeleCCTable color temperature

The HALO Commercial SeleCCTable products include the PRS4 and PRS6 square LED downlights. This SeleCCTable technology puts flexibility at your fingertips. By using the switches located on the LED module, the user can choose from a range of three 80 CRI color temperatures 3000K, 3500K and 4000K.



seleCCTable™

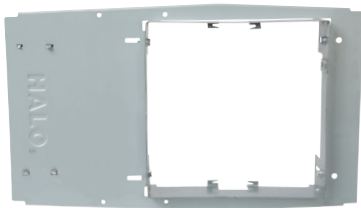
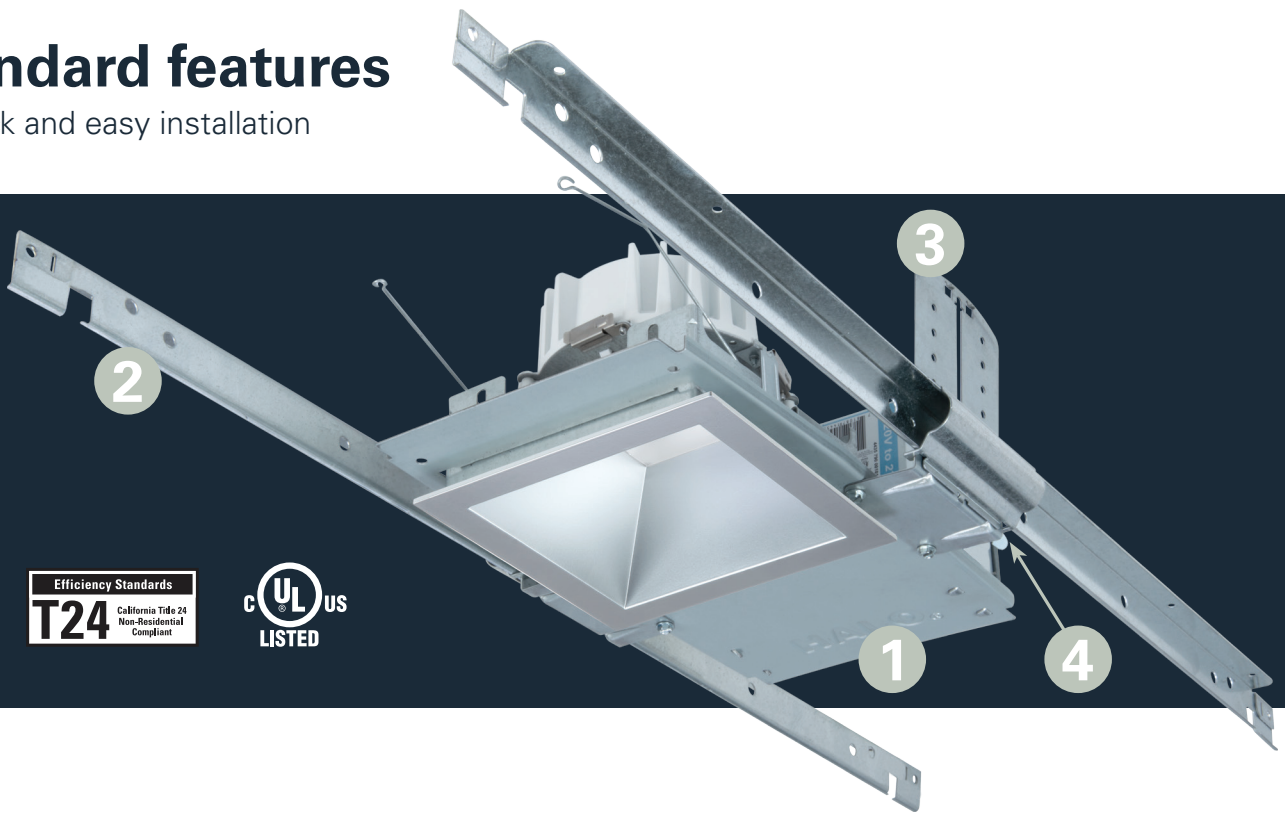
Field selectable lumens



Nominal values for 15 - 20 footcandles at nadir.

Standard features

for quick and easy installation



1. Housing Frame

- a. 4" and 6" Boat-shaped galvanized steel frames with square aperture
- b. New construction or remodeling installation with boat shaped frame
- c. Plaster lip collar pre-set to 1/2" and adjusts for ceilings up to 1-1/2" thick



2. No Fuss Bar Hangers™

- a. Pre-installed and centered mounting bars
- b. Bars lock to tee grid with screwdriver or pliers
- c. Centering marks on the bar bracket



3. Adjustable Mounting Brackets

- a. Bar brackets adjust 2" vertically from above the ceiling or through the aperture
- b. Brackets for use with the included "No Fuss" mounting bars or with 1/2" EMT
- c. Brackets are removable for remodel installation from below the ceiling



4. Junction box

- a. Listed for (8) #12 AWG 90° C conductors (4-in/4-out)
- b. Listed for feed through branch wiring
- c. (3) 1/2" and (2) 3/4" trade size pry-outs
- d. Low voltage barrier section for 0-10V dimming wires
- e. (3) 4-port push wire nuts (1-port is fixture connection)

4" Square LED Downlight & Wall Wash



4-inch square aperture LED downlight offered in tall and shallow reflectors. Reflectors feature TIR* lens optics delivering narrow, medium or wide beam distribution options. Linear spread lens wall wash delivers asymmetric vertical illumination for a cohesive lighting design. SeleCCTable color temperatures and selectable lumens provide ultimate flexibility for the installer and distributor in fine-tuning project requirements.

*TIR – Total Internal Reflection

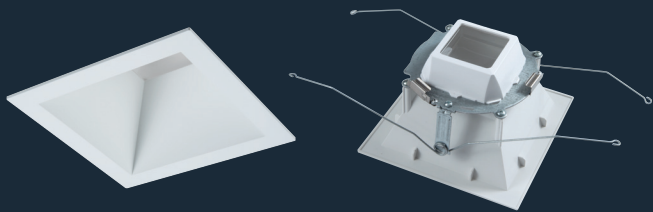
SAMPLE NUMBER: PRS4FS34D010REM7 - SM4348FS - 41SMDH

A complete luminaire consists of a mounting frame, LED module, and reflector (ordered separately)

Ordering Information, 120-277VAC, 0-10V analog dimming			
Housing Frame	Lumens	Input / Control	Factory Installed Options
PRS4 = 4" square new construction and remodeler housing	Field Selectable FS12 = field selectable 1000, 1500 and 2000 lumens (nominal), use with SM4128FS LED module FS34 = field selectable 3000 and 4000 lumens (nominal), use with SM4348FS LED module Fixed, Factory Set 10 = 1000 lumens (nominal), use with SM4128FS LED module (Type IC rated) 15 = 1500 lumens (nominal), use with SM4128FS LED module (Type IC rated) 30 = 3000 lumens (nominal), use with SM4348FS LED module	D010 =120-277VAC, 50/60Hz, 0-10V analog 1% dimming	REM7 =7 watt emergency module with remote test / indicator light, Use with D010 only REM14 =14 watt emergency module with remote test / indicator light, use with D010 only BOD7ST = 7.5 watt Bodine self-test diagnostic emergency module with remote test / indicator light, use with D010 only WTA =Factory installed WaveLinX sensor kit ⁽³⁾ WTK = Factory installed WaveLinX Lite Sensor Kit ⁽⁴⁾
Notes			
(3) WTA = WaveLinX tile mount sensor kit for daylight dimming, PIR motion sensing, and optional RLTS - Real Time Location Services, use with D010 only (Refer to WaveLinX system specifications)			
(4) WTK = WaveLinX Lite tile mount sensor kit for daylight dimming, PIR motion sensing, use with D010 only (Refer to WaveLinX Lite system specifications)			

Ordering Information, Distributed Low Voltage Power - for use with DLVP system only			
Housing Frame	Lumens	Input / Control	Options
PRS4 = 4" square new construction and remodeler housing	Fixed, Factory Set 10 = 1000 lumens (nominal), use with SM4128FS LED module (Type IC rated) 15 = 1500 lumens (nominal), use with SM4128FS LED module (Type IC rated) 20 = 2000 lumens (nominal), use with SM4128FS LED module 30 = 3000 lumens (nominal), use with SM4348FS LED module 40 = 4000 lumens (nominal), use with SM4348FS LED module	DLV = Distributed low voltage driver, 1%-100% dimming, DLV for use with DLVP system only. Refer to DLVP low-voltage power module and DLVP specifications for details.	REM7 = 7W emergency module with remote test / indicator light, use with DLV only REM14 = 14W emergency module with remote test / indicator light, use with DLV only
Notes			
(3) WTA = WaveLinX tile mount sensor kit for daylight dimming, PIR motion sensing, and optional RLTS - Real Time Location Services, use with D010 only (Refer to WaveLinX system specifications)			
(4) WTK = WaveLinX Lite tile mount sensor kit for daylight dimming, PIR motion sensing, use with D010 only (Refer to WaveLinX Lite system specifications)			

LED Module	Lumens	CRI/CCT	Accessories
SM4 = 4" LED module	12 =Field selectable 1000, 1500 and 2000 lumens (nominal), preset for 2000 lumens, use with PRS4FS12*, PRS410*, PRS415*, PRS420* housings 34 =Field selectable 3000 and 4000 lumens (nominal), preset for 4000 lumens, use with PRS4FS34*, PRS430*, PRS440* housings	8FS =80 CRI (minimum), field selectable 3000, 3500 and 4000 CCT, preset for 3500K	HB128APK =L channel hanger bar, 26", pair (replacement) RMB22 =Adjustable wood joist mounting bars, pair, extend to 22" long H347 =347 to 120V step down transformer, 75VA H347200 =347 to 120V step down transformer, 200VA WTA =Field installed WaveLinX sensor Kit ⁽³⁾ WTK = Field installed WaveLinX Lite Sensor Kit ⁽⁴⁾
Notes			
(3) WTA = WaveLinX tile mount sensor kit for daylight dimming, PIR motion sensing, and optional RLTS - Real Time Location Services, use with D010 only (Refer to WaveLinX system specifications)			
(4) WTK = WaveLinX Lite tile mount sensor kit for daylight dimming, PIR motion sensing, use with D010 only (Refer to WaveLinX Lite system specifications)			



Precision formed 4-inch square reflectors for refined corner detail. Reflectors non-conductive polymer construction may be used to meet 'dead-front' requirements. TIR lens optics deliver square beam in narrow, medium and wide distributions. Lenses are interchangeable allowing change if needed in the field.

Reflector - Deep	Distribution ⁽²⁾	Finish	Flange	Accessories
41S = 4" square reflector, non-conductive polymer, use with SM4 modules only.	ND = narrow, TIR lens included (58° beam angle, 0.8 SC) MD = medium, TIR lens included (63° beam angle, 1.0 SC) WD = wide, TIR lens included (70° beam angle, 1.25 SC) WW = linear spread lens wall wash, insert included	Vacuum Metallized C = Specular clear H = Semi-specular clear (haze) Painted MB = Matte black MW = Matte white	Blank = Vacuum Metallized flange standard on C, H reflectors Blank = White flange on MW reflectors Blank = Black flange on MB reflectors WF = White flange option available with C, H, MB reflectors	TIR4SND = narrow distribution TIR lens for 4" reflectors ⁽¹⁾ TIR4SMD = medium distribution TIR lens for 4" reflectors ⁽¹⁾ TIR4SWD = wide distribution TIR lens for 4" reflectors ⁽¹⁾ S4DWW = wall wash replacement insert for 4" wall wash reflector

Reflector - Shallow	Distribution ⁽²⁾	Finish	Flange	Accessories
44S = 4" square shallow reflector, non-conductive polymer, use with SM4 modules only.	ND = narrow with TIR lens included (61° beam angle, 0.88 SC) MD = medium with TIR lens included (74° beam angle, 1.04 SC) WD = wide with TIR lens included (98° beam angle, 1.30 SC)	Vacuum Metallized C = Specular clear H = Semi-specular clear (haze) Painted MB = Matte black MW = Matte white	Blank = Vacuum Metallized flange standard on C, H reflectors Blank = White flange on MW reflectors Blank = Black flange on MB reflectors WF = White flange option available with C, H, MB reflectors	TIR4SND = narrow distribution TIR lens for 4" reflectors ⁽¹⁾ TIR4SMD = medium distribution TIR lens for 4" reflectors ⁽¹⁾ TIR4SWD = wide distribution TIR lens for 4" reflectors ⁽¹⁾

Notes

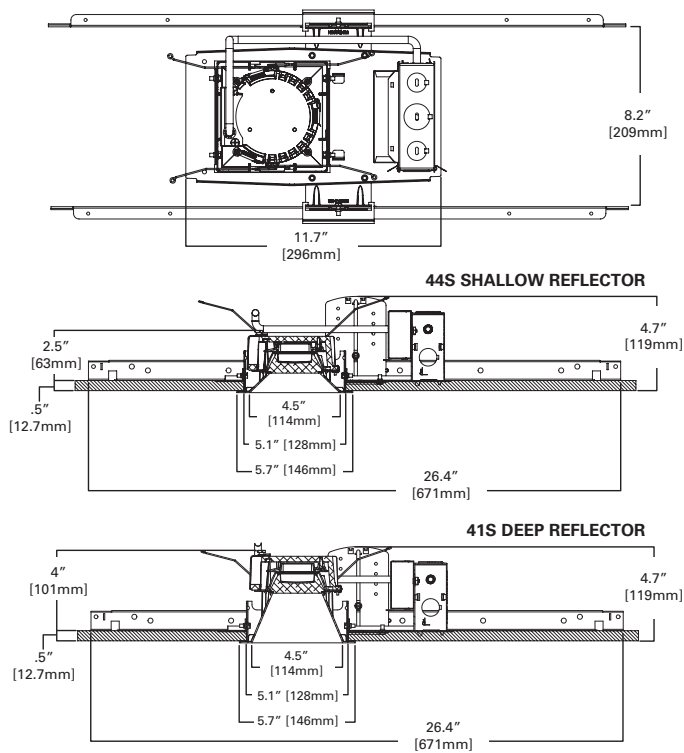
- (1) TIR lenses for replacement - field interchangeable
- (2) Values are nominal for white reflectors, others may vary.

Energy Data - PRS4 Series

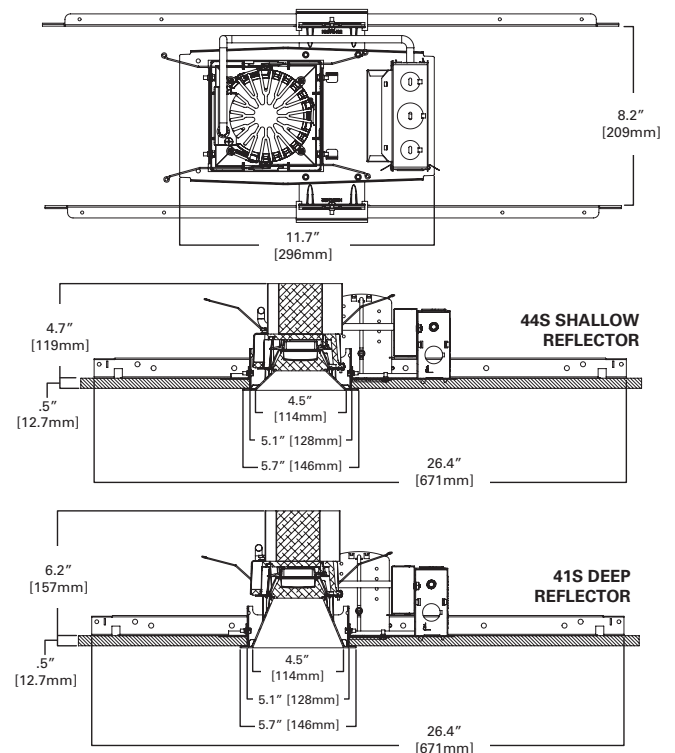
Nominal Lumens Model Number	1000 lumen SM4128FS		1500 lumen SM4128FS		2000 lumen SM4128FS		3000 lumen SM4348FS		4000 lumen SM4348FS	
LED Module	Low Lumen Module		Low Lumen Module		Low Lumen Module		High Lumen Module		High Lumen Module	
Input Voltage 120-277VAC	120V	277V	120V	277V	120V	277V	120V	277V	120V	277V
Current (A)	0.089	0.043	0.112	0.052	0.178	0.079	0.225	0.101	0.332	0.145
Power (W)	10.5	11	13.4	13.8	21.3	21.4	26.9	27	39.8	39.4
In-rush (A)	8.9	22.2	9.9	24.8	8	19.1	11.6	27.9	12.8	27.5
In-rush Duration (ms)	0.145	0.118	0.198	0.107	0.185	0.133	0.187	0.081	0.211	0.107
THD (%)	<15.1	<16.7	<13.3	<15.5	<8.2	<10.6	<9.05	<11.8	<5.9	<8.8
PF ≥	≥ 0.98	≥ 0.92	≥ 0.98	≥ 0.94	≥ 0.99	≥ 0.97	≥ 0.99	≥ 0.96	≥ 0.99	≥ 0.98
Minimum starting temperature	-40 C (-40 F)									

Dimensions - PRS4 Series

4", LOW LUMEN MODULE (1000 - 1500 - 2000 LUMEN)



4", HIGH LUMEN MODULE (3000 - 4000 LUMEN)



PRS4 LED Module	Low Lumen 1000-1500-2000	Low Lumen 1000-1500-2000	High Lumen 3000-4000	High Lumen 3000-4000
Reflector	41S Deep	44S Shallow	41S Deep	44S Shallow
Trim Height*	4.5"	3.0"	6.7"	5.2"
Frame Height**	4.7"	4.7"	4.7"	4.7"

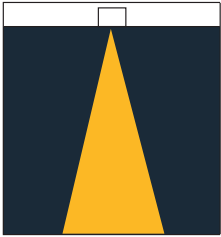
*Trim height includes LED module

**Frame Height is lower if vertical bar bracket is removed when installing frame from below the ceiling in remodel construction



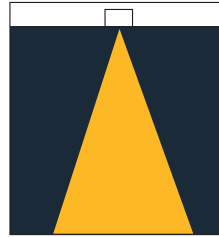
41S PRS4 Deep Reflectors

Photometric Data Summary



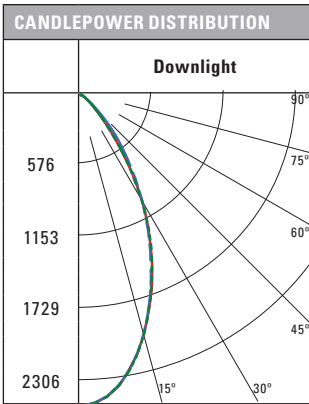
Narrow Distribution*

PRS4FS12D010-SM4128FS-41SNDC
 Beam Angle: 58°
 Efficacy: 90.9 Lm/W
 Spacing Criteria 0.8
 Test No. P241955

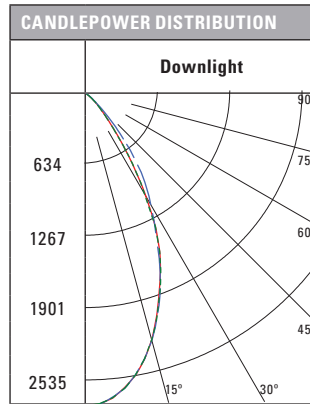


Medium Distribution*

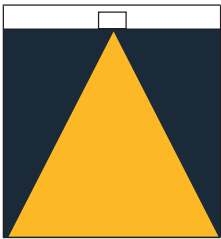
PRS4FS12D010-SM4128FS-41SMDC
 Beam Angle: 63°
 Efficacy: 100.7 Lm/W
 Spacing Criteria 0.82
 Test No. P241970



Zone	Lumens	% Fixture
0-30	1273	70
0-40	1654	91
0-60	1818	100
0-90	1818	100
90-180	0	0
0-180	1818	100

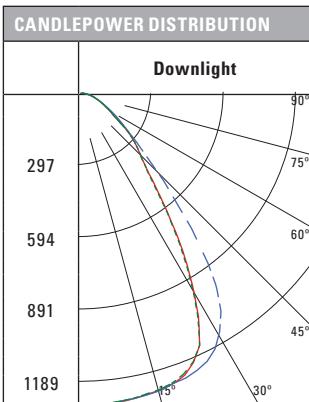


Zone	Lumens	% Fixture
0-30	1445	71.8
0-40	1857	92.2
0-60	2012	99.9
0-90	2013	100
90-180	0	0
0-180	2013	100



Wide Distribution*

PRS4FS12D010-SM4128FS-41SNDC
 Beam Angle: 70°
 Efficacy: 90.9 Lm/W
 Spacing Criteria 1.12
 Test No. P241955



Zone	Lumens	% Fixture
0-30	936	48.9
0-40	1375	71.9
0-60	1785	93.3
0-90	1913	100
90-180	0	0
0-180	1913	100

Photometric Multipliers (nominal lumen values)

1000 Lumen	1500 Lumen	2000 Lumen	3000 Lumen	4000 Lumen
0.47	0.62	1.00	1.27	1.83

Multipliers for relative lumen values with other series models.

CCT Multipliers – 80CRI

3000K	3500K	4000K
0.90	1.00	0.95

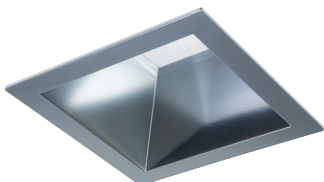
Multipliers for relative lumen values with other series color temperatures.

Color Finish Multipliers

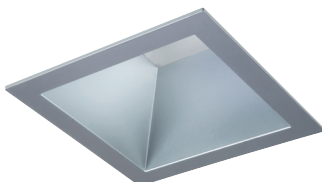
Finish code	C	H	MB	MW
Finish	Specular Clear	Semi-Specular	Matte Black	Matte White
Narrow Multiplier	1.00	0.96	0.74	0.99
Medium Multiplier	1.00	0.95	0.71	0.97
Wide Multiplier	1.00	0.93	0.63	0.96

Multipliers for relative lumen values with other reflector color finishes.

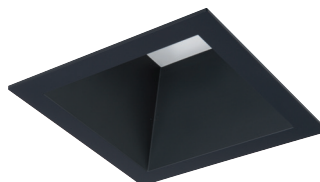
*Values are for specular clear reflectors, others may vary.



C = specular clear



H = semi-specular (haze)



MB = matte black

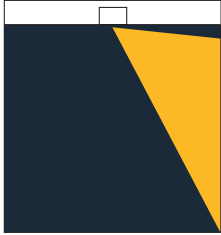


MW = matte white



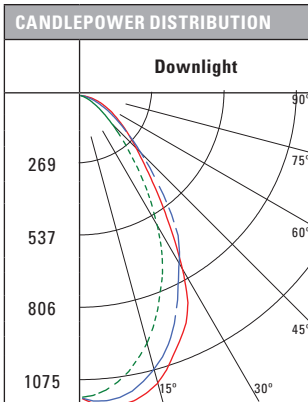
41S PRS4 Wall Wash Reflectors

Photometric Data Summary



Wall Wash Distribution*

PRS4FS12D010-SM4128FS-41SWWC
 Efficacy: 64.4 Lm/W
 Spacing Criteria 0.94
 Test No. P24200



ZONAL LUMEN SUMMARY		
Zone	Lumens	% Fixture
0-30	658	51.1
0-40	937	72.8
0-60	1222	94.9
0-90	1287	100
90-180	0	0
0-180	1287	100

SINGLE UNIT FOOTCANDLES								
2.5' from wall (distance from fixture along wall)								
1	11.1	7.9	3	1	0.3	0.1	0	
2	16.2	13.3	6.7	2.6	1	0.4	0.2	
3	16.5	14	8.6	3.9	1.7	0.7	0.3	
4	15.2	13.2	9	4.7	2.2	1.1	0.5	
5	11.8	10.6	7.8	4.8	2.6	1.3	0.7	
6	8.2	7.5	5.9	4.1	2.5	1.4	0.8	
7	5.8	5.4	4.5	3.3	2.3	1.4	0.9	
8	4.2	4	3.4	2.7	2	1.3	0.9	
9	3.1	3	2.6	2.2	1.7	1.2	0.8	
10	2.4	2.3	2.1	1.7	1.4	1.1	0.8	

Photometric Multipliers (nominal lumen values)

1000 Lumen	1500 Lumen	2000 Lumen	3000 Lumen	4000 Lumen
0.47	0.62	1.00	1.27	1.83

Multipliers for relative lumen values with other series models.

CCT Multipliers – 80CRI

3000K	3500K	4000K
0.90	1.00	0.95

Multipliers for relative lumen values with other series color temperatures.

Color Finish Multipliers

Finish code	C	H	MB	MW
Finish	Specular Clear	Semi-Specular	Matte Black	Matte White
Wall Wash Multiplier	1.00	0.96	0.76	0.99

Multipliers for relative lumen values with other reflector color finishes.

MULTIPLE UNIT FOOTCANDLES										
2.5' from wall (distance from fixture along wall)						2.5' from wall (distance from fixture along wall)				
1	12	10.3	12	11.4	6	11.4				
2	18.9	19.9	18.9	17.2	13.5	17.2				
3	20.4	23	20.4	18.2	17.1	18.2				
4	19.9	22.3	19.9	17.4	18	17.4				
5	16.6	18.6	16.6	14.4	15.5	14.4				
6	12.4	13.5	12.4	10.7	11.7	10.7				
7	9.1	10	9.1	8.1	8.9	8.1				
8	6.9	7.5	6.9	6.2	6.8	6.2				
9	5.3	5.7	5.3	4.8	5.3	4.8				
10	4.1	4.4	4.1	3.8	4.1	3.8				

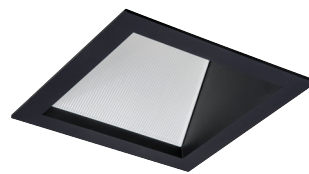
*Values are for specular clear reflectors, others may vary.



C = specular clear



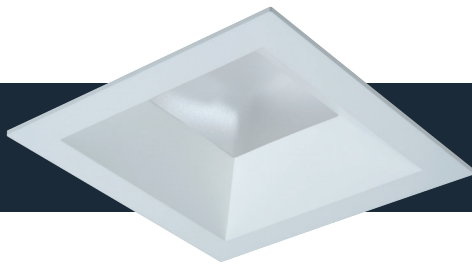
H = semi-specular (haze)



MB = matte black

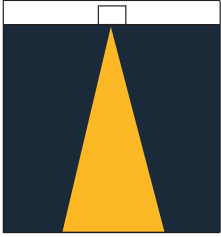


MW = matte white



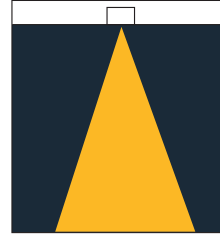
44S PRS4 Shallow Reflectors

Photometric Data Summary



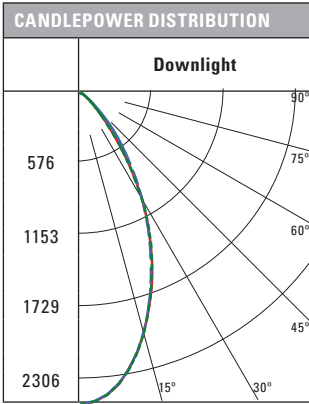
Narrow Distribution*

PRS4FS12D010-SM4128FS-44SNDC
 Beam Angle: 61°
 Efficacy: 96.1 Lm/W
 Spacing Criteria 0.9
 Test No. P241775

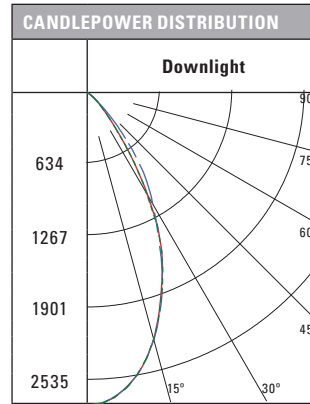


Medium Distribution*

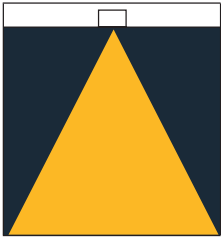
PRS4FS12D010-SM4128FS-44SMDC
 Beam Angle: 63°
 Efficacy: 108.5 Lm/W
 Spacing Criteria 1.03
 Test No. P241790



Zone	Lumens	% Fixture
0-30	1273	70
0-40	1654	91
0-60	1818	100
0-90	1818	100
90-180	0	0
0-180	1818	100

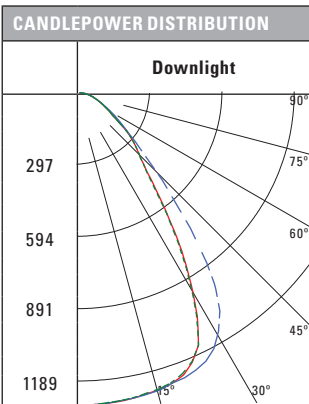


Zone	Lumens	% Fixture
0-30	1445	71.8
0-40	1857	92.2
0-60	2012	99.9
0-90	2013	100
90-180	0	0
0-180	2013	100



Wide Distribution*

PRS4FS12D010-SM4128FS-44SWDC
 Beam Angle: 98°
 Efficacy: 104.0 Lm/W
 Spacing Criteria 1.30
 Test No. P252875



Zone	Lumens	% Fixture
0-30	936	48.9
0-40	1375	71.9
0-60	1785	93.3
0-90	1913	100
90-180	0	0
0-180	1913	100

Photometric Multipliers (nominal lumen values)

1000 Lumen	1500 Lumen	2000 Lumen	3000 Lumen	4000 Lumen
0.53	0.72	1.00	1.38	1.87

Multipliers for relative lumen values with other series models.

CCT Multipliers – 80CRI

3000K	3500K	4000K
0.90	1.00	0.95

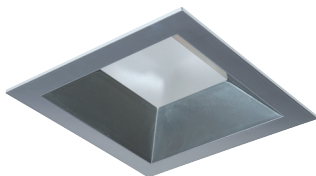
Multipliers for relative lumen values with other series color temperatures.

Color Finish Multipliers

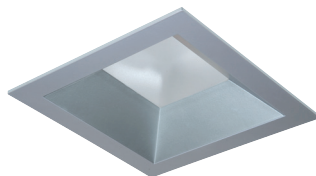
Finish code	C	H	MB	MW
Finish	Specular Clear	Semi-Specular	Matte Black	Matte White
Narrow Multiplier	1.00	0.96	0.74	0.99
Medium Multiplier	1.00	0.95	0.71	0.97
Wide Multiplier	1.00	0.93	0.63	0.96

Multipliers for relative lumen values with other reflector color finishes.

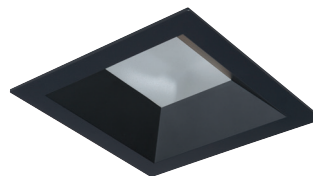
*Values are for specular clear reflectors, others may vary.



C = specular clear



H = semi-specular (haze)



MB = matte black



MW = matte white

Chromaticity Data - PRS4 Series

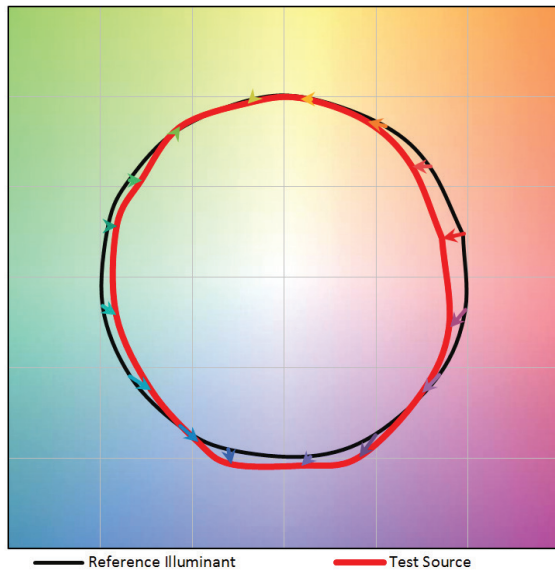
Summary Color metrics

80 CRI	Color Rendering Index		IES TM-30-18 Color Rendition	
	CRI (Ra)	CRI (R9)	Fidelity Index (Rf) Metric 0-100	Gamut Index (Rg) Metric 60 – 140 if Rf >60
3000K	82.2	7.2	82.9	95.3
3500K	83	10	82.9	94.9
4000K	81.9	3.9	81.9	93.9

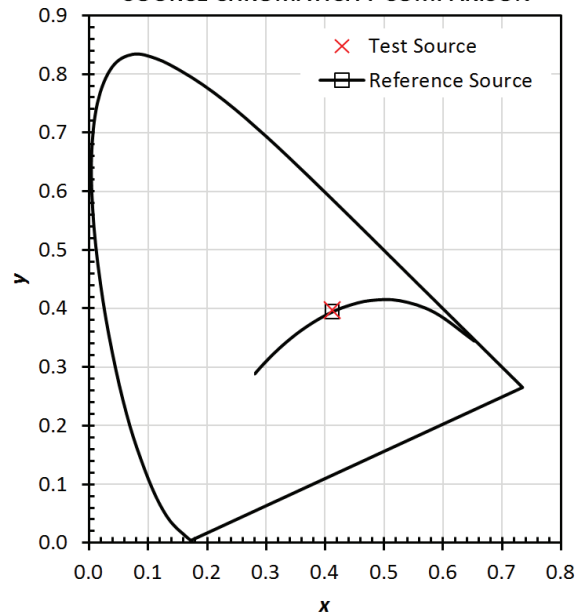
80 CRI - 3500K

TM-30-15 Vector Graphic and CIE 1931 Chromaticity Diagram

COLOR VECTOR GRAPHIC



SOURCE CHROMATICITY COMPARISON



80 CRI - 3500K

TM-30-15 Data Summary

Metric	Test	Reference	Notes
R_f	83	100	IESTM-30-15 Fidelity Index
R_g	95	100	IESTM-30-15 Gamut Index
CIE R_a	83	100	CIE Test Color Method General Index
R_9	10	100	CIE Test Color Method Sample Nine Score
LER	328	176	Luminous Efficacy of Radiation
$R_{f,skin}$	88	100	Average of CES15 and CES18 (skin)

Test Source Data

R_f	83
R_g	95
CCT (K)	3354
D_{uv}	0.0013
x	0.4153
y	0.3985
CIE R_a	83

6" Square LED Downlight & Wall Wash

6-inch square aperture LED downlight offered in tall and shallow reflectors. Reflectors feature TIR* lens optics delivering narrow, medium or wide beam distribution options. Linear spread lens wall wash delivers asymmetric vertical illumination for a cohesive lighting design. SeleCCTable color temperatures and selectable lumens provide ultimate flexibility for the installer and distributor in fine-tuning project requirements.

*TIR – Total Internal Reflection

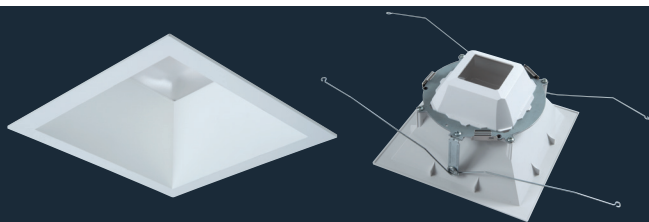
SAMPLE NUMBER: PRS6FS24D010REM7 - SM6248FS - 61SMDH

A complete luminaire consists of a mounting frame, LED module, and reflector (ordered separately)

Ordering Information, 120-277VAC, 0-10V analog dimming			
Housing Frame	Lumens	Input / Control	Factory Installed Options
PRS6 = 6" square new construction and remodeler housing	Field Selectable FS12 = field selectable 1000, 1500 and 2000 lumens (nominal), use with SM6128FS LED module FS24 = field selectable 2000, 3000 and 4000 lumens (nominal), use with SM6248FS LED module Fixed, Factory Set 10 = 1000 lumens (nominal), use with SM6128FS LED module (Type IC rated) 15 = 1500 lumens (nominal), use with SM6128FS LED module (Type IC rated) 30 = 3000 lumens (nominal), use with SM6248FS LED module	D010 =120-277VAC, 50/60Hz, 0-10V analog 1% dimming	REM7 =7 watt emergency module with remote test / indicator light, use with D010 only REM14 =14 watt emergency module with remote test / indicator light, use with D010 only BOD7ST = 7.5 watt Bodine self-test diagnostic emergency module with remote test / indicator light, use with D010 only WTA =Factory installed WaveLinX sensor Kit ⁽³⁾ WTK = Factory installed WaveLinX Lite Sensor Kit ⁽⁴⁾
Notes			
(3) WTA = WaveLinX tile mount sensor kit for daylight dimming, PIR motion sensing, and optional RLTS - Real Time Location Services, use with D010 only (Refer to WaveLinX system specifications)			
(4) WTK = WaveLinX Lite tile mount sensor kit for daylight dimming, PIR motion sensing, use with D010 only (Refer to WaveLinX Lite system specifications)			

Ordering Information, Distributed Low Voltage Power - for use with DLVP system only			
Housing Frame	Lumens	Input / Control	Options
PRS6 = 6" square new construction and remodeler housing	Fixed, Factory Set 10 = 1000 lumens (nominal), use with SM6128FS LED module (Type IC rated) 15 = 1500 lumens (nominal), use with SM6128FS LED module (Type IC rated) 20 = 2000 lumens (nominal), use with SM6128FS LED module 30 = 3000 lumens (nominal), use with SM6248FS LED module 40 = 4000 lumens (nominal), use with SM6248FS LED module	DLV = Distributed low voltage driver, 1%-100% dimming. DLV for use with DLVP system only. Refer to DLVP low-voltage power module and DLVP specifications for details.	REM7 = 7 watt emergency module with remote test / indicator light, use with DLV only REM14 = 14 watt emergency module with remote test / indicator light, use with DLV only
Notes			
(3) WTA = WaveLinX tile mount sensor kit for daylight dimming, PIR motion sensing, and optional RLTS - Real Time Location Services, use with D010 only (Refer to WaveLinX system specifications)			
(4) WTK = WaveLinX Lite tile mount sensor kit for daylight dimming, PIR motion sensing, use with D010 only (Refer to WaveLinX Lite system specifications)			

LED Module	Lumens	CRI/CCT	Accessories
SM6 = 6" LED module	12 =Field selectable 1000, 1500 and 2000 lumens (nominal), preset for 2000 lumens, use with PRS6FS12*, PRS610*, PRS615*, PRS620* housings 24 =Field selectable 2000, 3000 and 4000 lumens (nominal), preset for 4000 lumens, use with PRS6FS24*, PRS620*, PRS630*, PRS640* housings	8FS =80 CRI (minimum), field selectable 3000, 3500 and 4000 CCT, preset for 3500K	HB128APK -L channel hanger bar, 26", pair (replacement) RMB22 =Adjustable wood joist mounting bars, pair, extend to 22" long H347 =347 to 120V step down transformer, 75VA H347200 =347 to 120V step down transformer, 200VA WTA =Field installed WaveLinX sensor Kit ⁽³⁾ WTK = Field installed WaveLinX Lite Sensor Kit ⁽⁴⁾
Notes			
(3) WTA = WaveLinX tile mount sensor kit for daylight dimming, PIR motion sensing, and optional RLTS - Real Time Location Services, use with D010 only (Refer to WaveLinX system specifications)			
(4) WTK = WaveLinX Lite tile mount sensor kit for daylight dimming, PIR motion sensing, use with D010 only (Refer to WaveLinX Lite system specifications)			



Precision formed 6-inch square reflectors for refined corner detail. Reflectors non-conductive polymer construction may be used to meet 'dead-front' requirements. TIR lens optics deliver square beam in narrow, medium and wide distributions. Lenses are interchangeable allowing change if needed in the field.

Reflector - Deep	Distribution ⁽²⁾	Finish	Flange	Accessories
61S = 6" square reflector, non-conductive polymer, use with SM6 modules only	ND = narrow, TIR lens included (58° beam angle, 0.8 SC) MD = medium, TIR lens included (68° beam angle, 1.0 SC) WD = wide, TIR lens included (80° beam angle, 1.3 SC) WW = linear spread lens wall wash, insert included	Vacuum Metallized C = Specular clear H = Semi-specular clear (haze) Painted MB = Matte black MW = Matte white	Blank = Vacuum Metallized flange standard on C, H reflectors Blank = White flange on MW reflectors Blank = Black flange on MB reflectors WF = White flange option available with C, H, MB reflectors	TIR6SND = narrow distribution TIR lens for 6" reflectors ⁽¹⁾ TIR6SMD = medium distribution TIR lens for 6" reflectors ⁽¹⁾ TIR6SWD = wide distribution TIR lens for 6" reflectors ⁽¹⁾ S6DWW = wall wash replacement insert for 6" wall wash reflector

Reflector - Shallow	Distribution ⁽²⁾	Finish	Flange	Accessories
64S = 6" square shallow reflector, non-conductive polymer, use with SM6 modules only	ND = narrow with TIR lens included (59° beam angle, 0.84 SC) MD = medium with TIR lens included (70° beam angle, 0.98 SC) WD = wide with TIR lens included (103° beam angle, 1.35 SC)	Vacuum Metallized C = Specular clear H = Semi-specular clear (haze) Painted MB = Matte black MW = Matte white	Blank = Vacuum Metallized flange standard on C, H reflectors Blank = White flange on MW reflectors Blank = Black flange on MB reflectors WF = White flange option available with C, H, MB reflectors	TIR6SND = narrow distribution TIR lens for 6" reflectors ⁽¹⁾ TIR6SMD = medium distribution TIR lens for 6" reflectors ⁽¹⁾ TIR6SWD = wide distribution TIR lens for 6" reflectors ⁽¹⁾

Notes

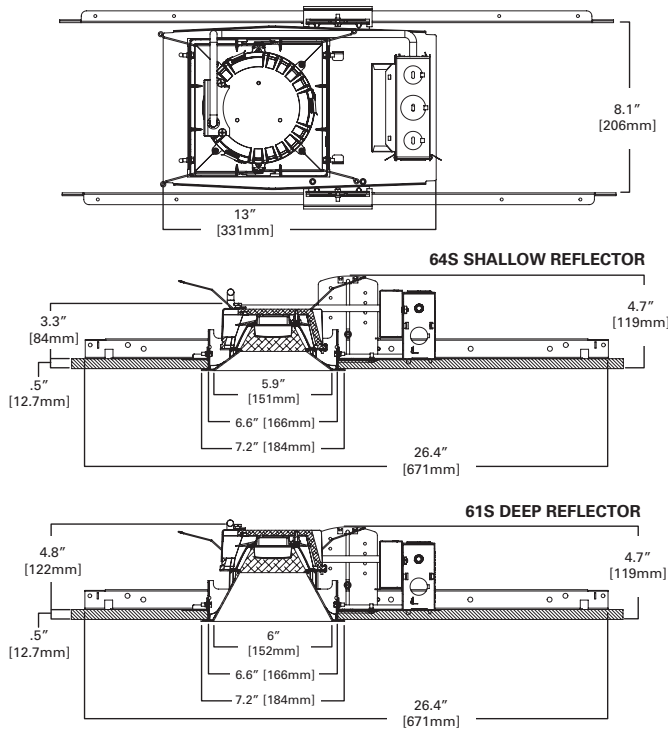
(1) TIR lenses for replacement - field interchangeable
(2) Values are nominal for white reflectors, others may vary.

Energy Data - PRS6 Series

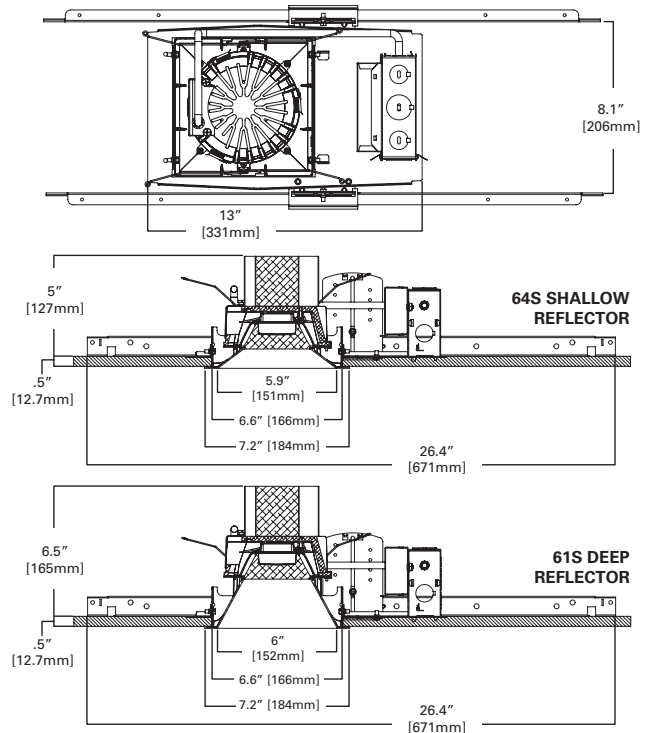
Nominal Lumens Model Number	1000 lumen SM6128FS		1500 lumen SM6128FS		2000 lumen SM6128FS		2000 lumen SM4348FS		3000 lumen SM4348FS		4000 lumen SM4348FS	
LED Module	Low Lumen Module		Low Lumen Module		Low Lumen Module		High Lumen Module		High Lumen Module		High Lumen Module	
Input Voltage 120-277VAC	120V	277V	120V	277V	120V	277V	120V	277V	120V	277V	120V	277V
Current (A)	0.089	0.043	0.112	0.052	0.178	0.079	0.176	0.081	0.225	0.101	0.332	0.145
Power (W)	10.5	11.0	13.4	13.8	21.3	21.4	11.0	13.6	26.9	27.0	39.8	39.4
In-rush (A)	8.9	22.2	9.9	24.8	8.0	19.1	15.3	32.1	11.6	27.9	12.8	27.5
In-rush Duration (ms)	0.145	0.118	0.198	0.107	0.1185	0.133	0.237	0.12	0.187	0.081	0.211	0.107
THD (%)	15.1	16.7	13.3	15.5	8.2	10.6	11.0	13.6	9.05	11.8	5.9	8.8
PF ≥	0.98	0.92	0.98	0.94	0.99	0.97	0.99	0.94	0.99	0.96	0.99	0.98
Minimum starting temperature	-40 C (-40 F)											

Dimensions - PRS6 Series

6", LOW LUMEN MODULE (1000 - 1500 - 2000 LUMEN)



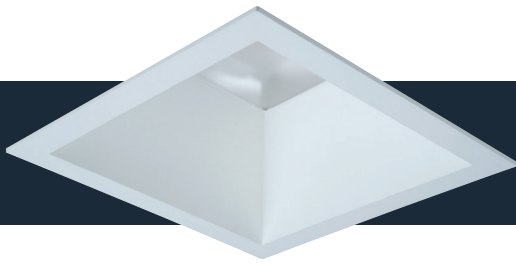
6", HIGH LUMEN MODULE (2000 - 3000 - 4000 LUMEN)



PRS6 LED Module	Low Lumen 1000-1500-2000	Low Lumen 1000-1500-2000	High Lumen 2000-3000-4000	High Lumen 2000-3000-4000
Reflector	61S Deep	64S Shallow	61S Deep	64S Shallow
Trim Height*	4.8"	3.3"	7.0"	5.5"
Frame Height**	4.7"	4.7"	4.7"	4.7"

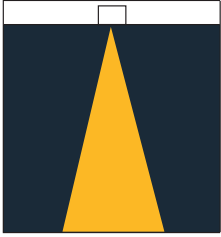
*Trim height includes LED module

**Frame Height is lower if vertical bar bracket is removed when installing frame from below the ceiling in remodel construction



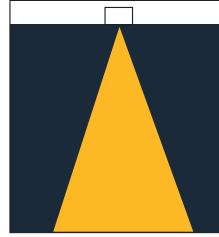
61S PRS6 Deep Reflectors

Photometric Data Summary



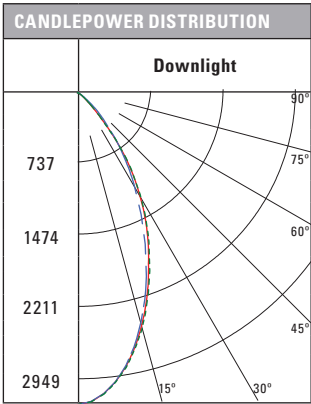
Narrow Distribution*

PRS6FS12D010-SM6128FS-61SNDC
 Beam Angle: 58°
 Efficacy: 119.4 Lm/W
 Spacing Criteria 0.79
 Test No. P238270



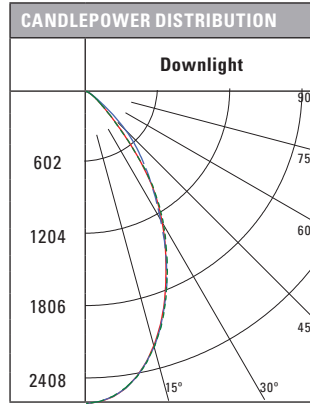
Medium Distribution*

PRS6FS12D010-SM6128FS-61SMDC
 Beam Angle: 62°
 Efficacy: 1015.8 Lm/W
 Spacing Criteria 0.86
 Test No. P238285



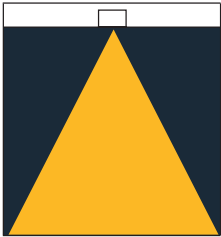
ZONAL LUMEN SUMMARY

Zone	Lumens	% Fixture
0-30	1608	67.3
0-40	2123	88.9
0-60	2383	99.8
0-90	2388	100
90-180	0	0
0-180	2388	100



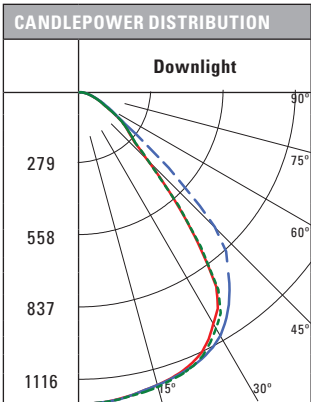
ZONAL LUMEN SUMMARY

Zone	Lumens	% Fixture
0-30	1452	62.7
0-40	1996	86.2
0-60	2311	99.8
0-90	2316	100
90-180	0	0
0-180	2316	100



Wide Distribution*

PRS4FS12D010-SM4128FS-41SWDC
 Beam Angle: 75°
 Efficacy: 105.4 Lm/W
 Spacing Criteria 1.26
 Test No. P253055



ZONAL LUMEN SUMMARY

Zone	Lumens	% Fixture
0-30	890	42.2
0-40	1436	68.1
0-60	1976	93.7
0-90	2109	100
90-180	0	0
0-180	2109	100

Photometric Multipliers (nominal lumen values)

1000 Lumen	1500 Lumen	2000 Lumen	3000 Lumen	4000 Lumen
0.46	0.61	1.00	1.27	1.82

Multipliers for relative lumen values with other series models.

CCT Multipliers – 80CRI

3000K	3500K	4000K
0.90	1.00	0.95

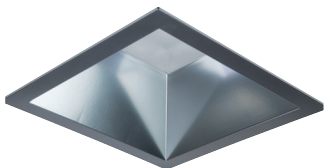
Multipliers for relative lumen values with other series color temperatures.

Color Finish Multipliers

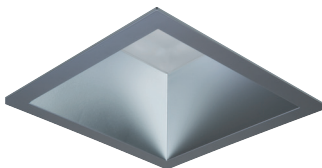
Finish code	C	H	MB	MW
Finish	Specular Clear	Semi-Specular	Matte Black	Matte White
Narrow Multiplier	1.00	0.99	0.88	1.00
Medium Multiplier	1.00	0.98	0.82	1.00
Wide Multiplier	1.00	0.96	0.70	1.00

Multipliers for relative lumen values with other reflector color finishes.

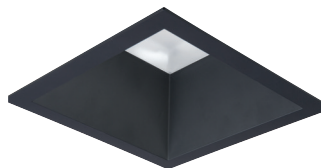
*Values are for specular clear reflectors, others may vary.



C = specular clear



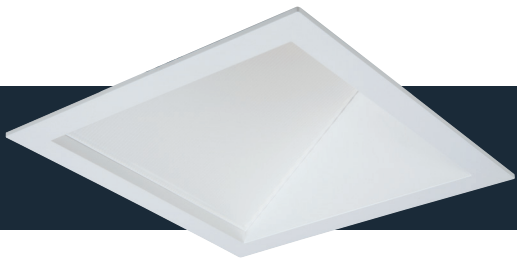
H = semi-specular (haze)



MB = matte black

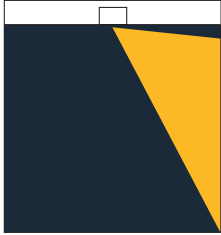


MW = matte white



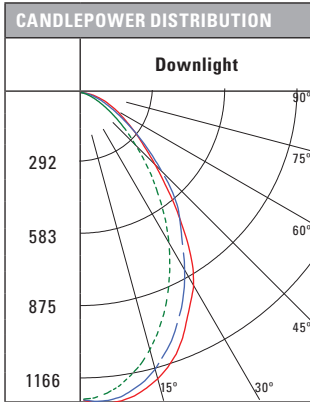
61S PRS6 Wall Wash Reflectors

Photometric Data Summary



Wall Wash Distribution*

PRS6FS12D010-SM6128FS-61SWWC
 Efficacy: 80.1 Lm/W
 Spacing Criteria 0.98
 Test No. P238330



ZONAL LUMEN SUMMARY		
Zone	Lumens	% Fixture
0-30	750	46.8
0-40	1100	68.7
0-60	1505	94
0-90	1602	100
90-180	0	0
0-180	1602	100

SINGLE UNIT FOOTCANDLES								
2.5' from wall (distance from fixture along wall)								
	1	2	3	4	5	6	7	8
1	13.9	9.8	4	1.4	0.5	0.2	0.1	
2	21.7	17.4	8.8	3.6	1.5	0.6	0.3	
3	22.9	19.2	11.8	5.5	2.4	1.1	0.6	
4	18.9	16.3	11.2	6.4	3.1	1.6	0.8	
5	12.9	11.6	8.7	5.7	3.3	1.8	1	
6	9	8.3	6.6	4.7	3.1	1.9	1.1	
7	6.4	6	5	3.8	2.7	1.8	1.2	
8	4.6	4.3	3.8	3	2.3	1.7	1.1	
9	3.4	3.2	2.9	2.4	1.9	1.4	1.1	
10	2.5	2.5	2.2	1.9	1.6	1.2	1	

Photometric Multipliers (nominal lumen values)

1000 Lumen	1500 Lumen	2000 Lumen	3000 Lumen	4000 Lumen
0.46	0.61	1.00	1.27	1.82

Multipliers for relative lumen values with other series models.

CCT Multipliers – 80CRI

3000K	3500K	4000K
0.90	1.00	0.95

Multipliers for relative lumen values with other series color temperatures.

Color Finish Multipliers

Finish code	C	H	MB	MW
Finish	Specular Clear	Semi-Specular	Matte Black	Matte White
Wall Wash Multiplier	1.00	0.98	0.91	1.00

Multipliers for relative lumen values with other reflector color finishes.

MULTIPLE UNIT FOOTCANDLES									
2.5' from wall (distance from fixture along wall)					2.5' from wall (distance from fixture along wall)				
	1	2	3	4		1	2	3	4
1	15.4	13.1	15.4		14.4	8	14.4		
2	25.2	26.3	25.2		23.1	17.7	23.1		
3	28.5	31.3	28.5		25.4	23.6	25.4		
4	25.2	27.8	25.2		22	22.4	22		
5	18.7	20.5	18.7		16.3	17.4	16.3		
6	13.7	15.1	13.7		12.1	13.2	12.1		
7	10.2	11	10.2		9.1	10	9.1		
8	7.6	8.2	7.6		6.9	7.5	6.9		
9	5.8	6.2	5.8		5.3	5.8	5.3		
10	4.5	4.7	4.5		4.1	4.5	4.1		

*Values are for specular clear reflectors, others may vary.



C = specular clear



H = semi-specular (haze)



MB = matte black

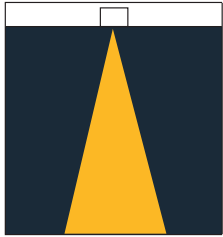


MW = matte white



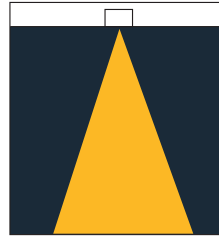
64S PRS6 Shallow Reflectors

Photometric Data Summary



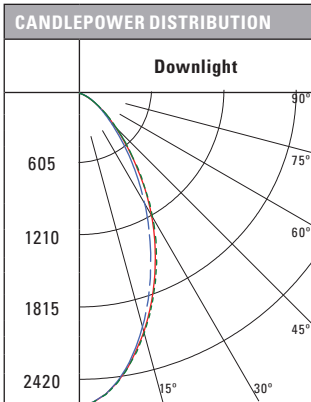
Narrow Distribution*

PRS6FS12D010-SM6128FS-64SNDC
 Beam Angle: 59°
 Efficacy: 123.5 Lm/W
 Spacing Criteria 0.82
 Test No. P228090

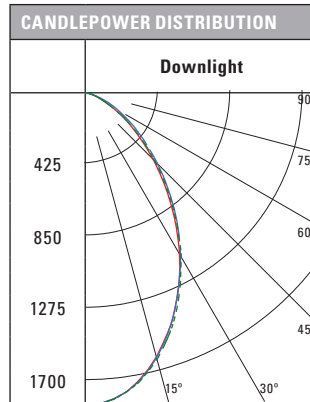


Medium Distribution*

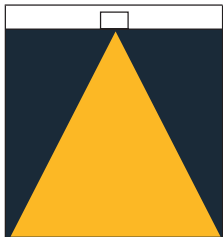
PRS6FS12D010-SM6128FS-64SMDC
 Beam Angle: 70°
 Efficacy: 121.3 Lm/W
 Spacing Criteria 0.96
 Test No. P238105



Zone	Lumens	% Fixture
0-30	1367	55.3
0-40	1878	76
0-60	2375	96.2
0-90	2470	100
90-180	0	0
0-180	2470	100

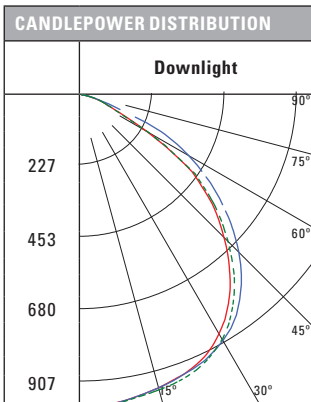


Zone	Lumens	% Fixture
0-30	1113	45.8
0-40	1637	67.4
0-60	2292	94.4
0-90	2427	100
90-180	0	0
0-180	2427	100



Wide Distribution*

PRS6FS12D010-SM6128FS-64SWDC
 Beam Angle: 103°
 Efficacy: 113.1 Lm/W
 Spacing Criteria 1.3
 Test No. P252995



Zone	Lumens	% Fixture
0-30	725	32.1
0-40	1202	53.2
0-60	2051	90.7
0-90	2261	100
90-180	0	0
0-180	2261	100

Photometric Multipliers (nominal lumen values)

1000 Lumen	1500 Lumen	2000 Lumen	3000 Lumen	4000 Lumen
0.47	0.62	1.00	1.27	1.83

Multipliers for relative lumen values with other series models.

CCT Multipliers – 80CRI

3000K	3500K	4000K
0.90	1.00	0.95

Multipliers for relative lumen values with other series color temperatures.

Color Finish Multipliers

Finish code	C	H	MB	MW
Finish	Specular Clear	Semi-Specular	Matte Black	Matte White
Narrow Multiplier	1.00	1.00	0.90	1.04
Medium Multiplier	1.00	0.99	0.95	1.01
Wide Multiplier	1.00	0.99	0.93	1.02

Multipliers for relative lumen values with other reflector color finishes.

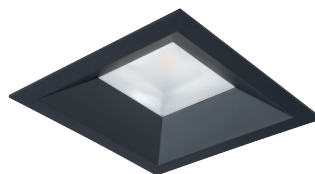
*Values are for specular clear reflectors, others may vary.



C = specular clear



H = semi-specular (haze)



MB = matte black



MW = matte white

Chromaticity Data - PRS6 Series

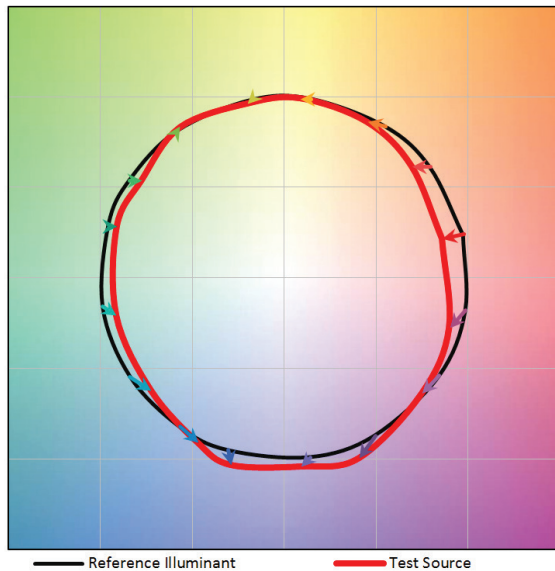
Summary Color metrics

80 CRI	Color Rendering Index		IES TM-30-18 Color Rendition	
	CRI (Ra)	CRI (R9)	Fidelity Index (Rf) Metric 0-100	Gamut Index (Rg) Metric 60 – 140 if Rf >60
3000K	82.4	8	83	95.5
3500K	83.3	10.9	83	95
4000K	82.4	6.3	82.3	94.2

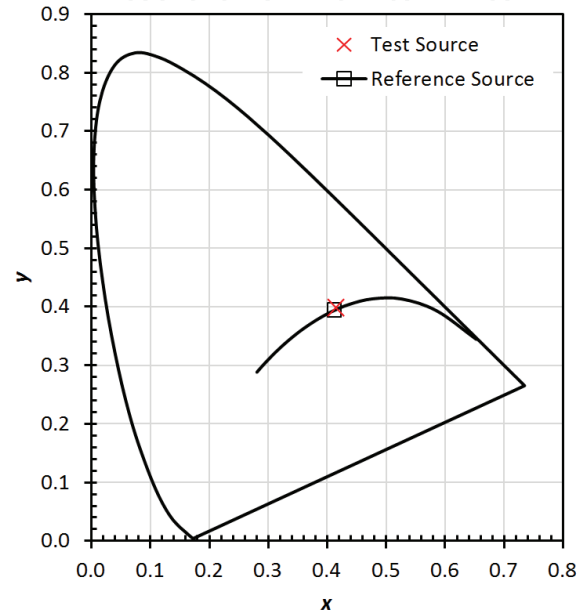
80 CRI - 3500K

TM-30-15 Vector Graphic and CIE 1931 Chromaticity Diagram

COLOR VECTOR GRAPHIC



SOURCE CHROMATICITY COMPARISON



80 CRI - 3500K

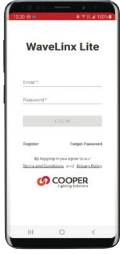
TM-30-15 Data Summary

Metric	Test	Reference	Notes
R_f	83	100	IESTM-30-15 Fidelity Index
R_g	95	100	IESTM-30-15 Gamut Index
CIE R_a	83	100	CIE Test Color Method General Index
R_9	11	100	CIE Test Color Method Sample Nine Score
LER	327	177	Luminous Efficacy of Radiation
$R_{f,skin}$	88	100	Average of CES15 and CES18 (skin)

Test Source Data

R_f	83
R_g	95
CCT (K)	3374
D_{uv}	0.0010
x	0.4137
y	0.3971
CIE R_a	83

Connected Systems

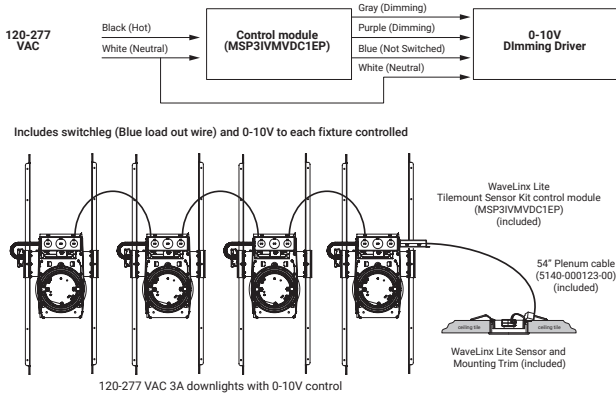


WaveLinX Lite - WTK Tilemount Sensor

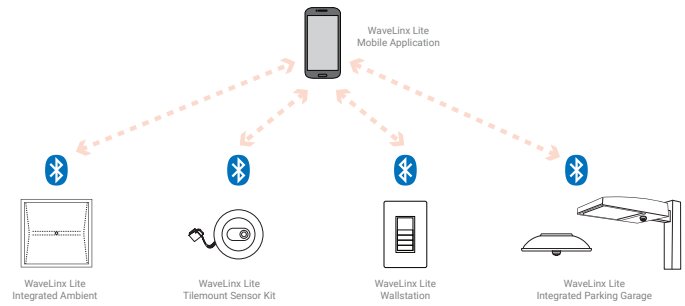
- Intuitive Android™ or Apple® iOS® app for basic system code compliant set up and configuration via Bluetooth
- Up to 28 unique areas per project site (WaveLinX Lite Bluetooth network)
- Up to 50 devices for an area, any one of 16 control zones, up to 6 occupancy sets, and custom lighting scenes
- Automatic occupancy or vacancy, sensor sensitivity, daylight dimming, etc. configurable through the app
- Refer to the WaveLinX system specifications for details



WaveLinX Lite WTK Tilemount Wiring Diagram



WaveLinX Lite Bluetooth Enabled System



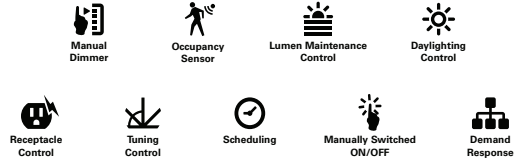
WaveLinX Wireless – WTA Tilemount Sensor



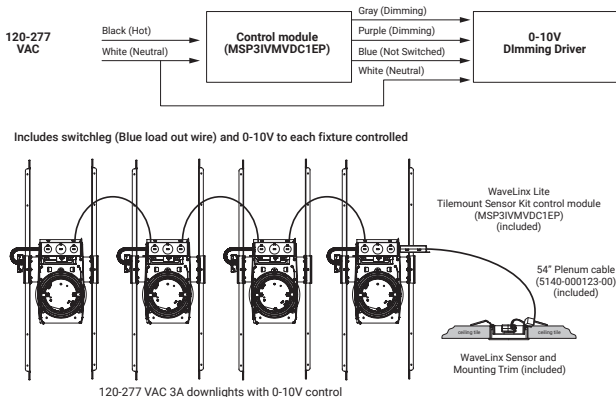
- WaveLinX Wireless functionality configures zones and customizes settings from one secure mobile app
- Automatic code commissioning that meets the strictest codes
- Fixtures and sensors integrate with Wireless Area Controller, Wall Stations, and Control Devices
- Stand-Alone Offices or Entire Building Network Installations



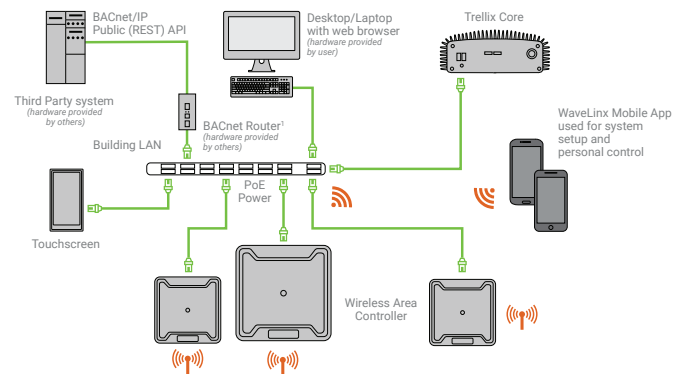
WaveLinX mobile app settings



WaveLinX Lite WTA Tilemount Wiring Diagram



WaveLinX Wireless Trellix Building Management Integration



HALO Commercial



Efficiency + Value

Halo Commercial achieves the perfect balance of optical control and efficiency to deliver lower watts per square foot in meeting commercial lighting energy codes and provide uniform beam distributions.

Design/build, tenant improvement, hospitality and institutional projects will appreciate the Halo Commercial balance of performance and budget-minded design.

Contractor and Distributor Friendly

- Housings ship complete with No-Fuss bar hangers (no additional bars or C-channel to assemble)
- No-Fuss bars lock to T-grid by quick bend of a screwdriver or pliers (no screws to secure to grid)
- Boat-shaped plaster frame offers versatility in new construction and "old-work" remodeling
- Oversized junction box with 1/2" and 3/4" trade size pry-outs ships with quick wiring connectors
- Junction box low voltage section provides code-required barrier for 0-10V dimmer wiring
- Plaster lip collar is preset for 1/2" ceiling material, and adjusts up to 1-1/2"

Performance and Efficiency

- Reflector designs optimized for greater optical efficiency (lumen delivery) and beam distribution
- Greater efficiency allows maximized fixture spacing with good uniformity
- Maximized spacing achieves desired watts per square foot (fewer fixtures = less power)
- Control from industry standard 120V-277V, 0-10V 1% dimmable LED driver
- Optional connected lighting control with Distributed Low Voltage Power system (DLVP) and WaveLinx

Product Mix

- Mainstream offering meets market demand in 4-inch, 6-inch, and 8-inch downlights
- PR series offers contractors versatility of lumen and LED color select-ability on-site
- HC series offers discrete selection of lumen and LED color for design/build and tenant improvement projects

Lighting Product Lines

Ametrix
AtLite
Corelite
Ephesus
Fail-Safe
HALO
HALO Commercial
Invue
io
IRiS
Lumark
Lumière
McGraw-Edison
Metalux
MWS
Neo-Ray
Portfolio
RSA
Shaper
Streetworks
Sure-Lites

Controls Product Lines

Greengate

Connected Lighting Systems

Fifth Light (Canada Only)
HALO Home
WaveLinx

IoT Platform

Trellix



Cooper Lighting Solutions
1121 Highway 74 South
Peachtree City, GA 30269
P: 770-486-4800
www.cooperlighting.com

Canada Sales
5925 McLaughlin Road
Mississauga, Ontario L5R 1B8
P: 905-501-3000
F: 905-501-3172

© 2020 Cooper Lighting Solutions
All Rights Reserved
Printed in USA
Publication No. BR517004EN
April 2021



All other trademarks are property of their respective owners.

Product availability, specifications, and compliances are subject to change without notice.