

## DESCRIPTION

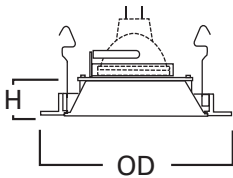
Reflector trim for 12V low voltage 4" H1499 family recessed housings. Die cast trim ring with metal reflector. Reflector and trim ring available in a variety of finishes. Three "cat's paw" springs secure trim in housing.

Catalog #		Type
Project		
Comments		Date
Prepared by		

## SPECIFICATION FEATURES

- Precision die cast metal trim ring with spun reflector cone
- Provides general illumination
- 35° Tilt
- Friction clip "cat paw" retention
- Clear cover glass included with each trim, for use with non-cover glass MR16 lamps

Housings	Max Lamp Compatibility
H1499TAT H1499RTAT	50W 12V MR16
H1499ICAT H1499TCP	
H1499T75	75W 12V MR16



## Dimensions

H: 1-3/8" [33mm]  
OD: 5" [129mm]

## ORDERING INFORMATION

SAMPLE NUMBER: 4001WB

Trim	Finish
1421= 4" Reflector	<b>MB</b> =Black Specular Reflector, White Trim <b>W</b> =White Reflector, White Trim <b>H</b> =Haze Reflector, White Trim <b>C</b> =Clear Specular Reflector, White Trim <b>RG</b> =Residential Gold Reflector, White Trim <b>CG</b> =Champagne Gold Reflector, White Trim <b>SN</b> =Satin Nickel Reflector and Trim <b>TBZ</b> =Tuscan Bronze Reflector and Trim



**1421C**  
Clear Specular Reflector with  
White Trim Ring



**1421CG**  
Champagne Gold Reflector  
with White Trim Ring



**1421RG**  
Residential Gold Reflector with  
White Trim Ring



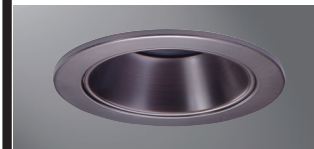
**1421H**  
Haze Reflector with  
White Trim Ring



**1421MB**  
Black Specular Reflector with  
White Trim Ring



**1421SN**  
Satin Nickel Reflector with  
Satin Nickel Trim Ring



**1421TBZ**  
Tuscan Bronze Reflector with  
Tuscan Bronze Trim Ring



**1421W**  
White Reflector,  
White Trim

## **1421** 4-Inch Reflector