

COURT-PERFECT LIGHTING, PRECISION ENGINEERED



GALN Galleon II

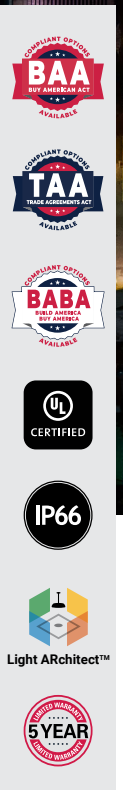
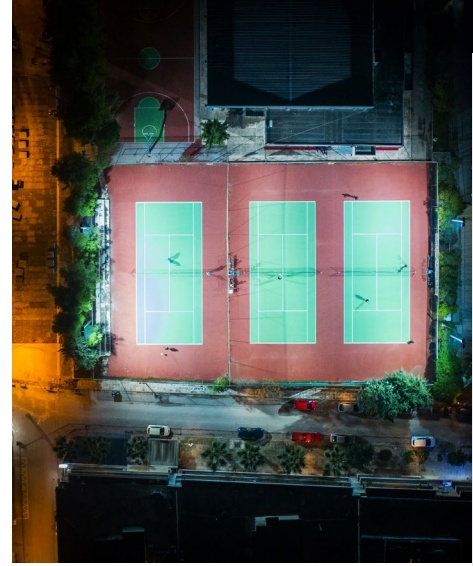
For *Tennis & Pickleball* Facilities

Whether it's fast-paced tennis or quick pickleball rallies, Galleon II provides uniform, low-glare lighting that meets tournament standards and improves player visibility. Precision optics focus light on the court, not nearby homes, delivering adaptable and energy-efficient solutions for single or multi-court designs.

Why It works:

- **For specifiers:** Covers uniformity metrics, IES RP-6 compliance, optical precision.
- **For facility managers:** Proven reliability, industry leading performance and easily serviceable electronics minimize operating and maintenance costs.
- **For players/visitors:** Enhanced visual clarity reduces response time and improves ball tracking, while minimizing glare for peak performance.



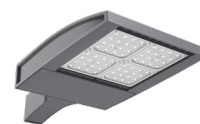


SPORT SPECIFIC LIGHTING SOLUTIONS

- CUSTOM OPTICS FOR PEAK PERFORMANCE**
 With 17 AccuLED distributions and multiple shielding options, Galleon II delivers crisp, uniform court lighting—vital for player performance on both tennis and pickleball courts.
- DESIGNED FOR COURT-SIDE VERSATILITY**
 Precise distribution and glare control are possible through arm adjustability and rotatable optics whether mounted on side- or corner-poles.
- ENERGY EFFICIENCY WITHOUT COMPROMISE**
 Maintain IES-recommended illuminance levels with outputs as high as 102,000 lumens, and efficacies up to 178 lm/W.
- LIGHT QUALITY PLAYERS DEMAND**
 Broad range of CCTs from 2200K to 6000K and CRI's up to 90; ideal for consistent ball tracking and player comfort.
- BUILT TO LAST, LOW MAINTENANCE**
 Robust construction includes IP66 and IK10 ratings, as well as a replaceable driver tray for fast and easy serviceability.
- CONTROLS THAT RAISE THE GAME**
 Wavelinx and Airmesh options enable facilities to take their lighting to the next level with grouping, scheduling, and dimming.

PRODUCT SPECIFICATIONS

- Lumen packages range from 3,300 – 102,700
- 17 optical distributions
- 3 shielding options to address glare and spill light
- 15 CCT/CRI options
- Fixed or Adjustable arm mount options
- WaveLinX and AirMesh controls options for stand-alone or connected platforms
- 6 standard finishes with custom finish options available
- 40°C to 40°C operation with optional 50°C rating
- Rugged die-cast aluminum construction with IK10 impact rating



GALLEON II - 4 SQUARE
Max Lumens: 45,000



GALLEON II - 6 SQUARE
Max Lumens: 68,000



GALLEON II - 9 SQUARE
Max Lumens: 102,000