



# HALO<sup>®</sup>

Recessed Downlighting  
LED/Halogen/Incandescent lamp

# Recessed Downlighting

## LED/Halogen/Incandescent lamp

---

### H36 Series

#### 3-inch housings and trims

|               |    |
|---------------|----|
| trims.....    | 6  |
| housings..... | 10 |

### E44 Series

#### 4-inch housings and trims

|               |    |
|---------------|----|
| trims.....    | 14 |
| housings..... | 24 |

### E26 Series

#### 4-, 5-, 6-inch housing and trims

|                      |    |
|----------------------|----|
| 4-inch housings..... | 28 |
| 4-inch trims .....   | 29 |
| 5-inch housings..... | 30 |
| 5-inch trims .....   | 31 |
| 6-inch housings..... | 37 |
| 6-inch trims .....   | 39 |



# HALO<sup>®</sup>

Recessed Downlighting

# H36

## 3-inch housings and trims

Recessed lighting has always been popular for its ability to deliver effective lighting while maintaining an unobtrusive ceiling appearance. The H36 is designed for small aperture lamps in low voltage MR16 and line voltage GU10. The Halo H36 trims deliver effective illumination, yet do not intrude on the main decorating elements in a space. The trims feature meticulous die-cast or machined detailing and they accommodate either low voltage or line voltage MR16 lamps depending on the housing used.

All H36 trims accept either 12V MR16 lamps or 120V GU10 LED lamps. Most trims allow lamp to tilt from 15° to 35° for precise aiming. The 3010 Super-Adjustable allows 0° up to 80° tilt for aiming in even tight distances.

- Die-cast adjustable gimbals with positive and negative aiming.
- Precision machined baffles with solid die-cast rings.
- Select wet location listed shower lights offered in die-cast or non-conductive and non-corrosive polymer trim rings with frosted glass edged lenses or regressed glass clear lenses.







## 3" baffles

### 3003

adjustable coilex® baffle



#### 3003WHWB

white coilex baffle, white trim



#### 3003SNB

satin nickel coilex baffle,  
satin nickel trim



#### 3003WHBB

black coilex baffle, white trim



#### 3003TBZB

tuscan bronze coilex baffle,  
tuscan bronze trim



#### 3003BKBB

black coilex baffle, black trim

### 3011

square adjustable baffle



#### 3011WHWB

white baffle, white trim



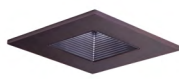
#### 3011SNBB

black baffle, satin nickel trim



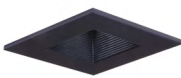
#### 3011WHBB

black baffle, white trim



#### 3011TBZBB

black baffle, tuscan bronze trim



#### 3011BKBB

black baffle, black trim

## 3" reflectors

### 3004

adjustable reflector



#### 3004WHW

white reflector, white trim



#### 3004SN

satin nickel reflector,  
satin nickel trim



#### 3004WHC

clear reflector, white trim



#### 3004TBZ

tuscan bronze reflector, tuscan  
bronze trim



#### 3004WHH

haze reflector, white trim

## 3" adjustable - eyeballs & gimbals

### 3009

adjustable gimbal - 35° tilt



**3009WHWB**

white baffle, white gimbal



**3009WHBB**

black baffle, white gimbal



**3009BKBB**

black baffle, black gimbal



**3009SNBB**

black baffle, satin nickel gimbal



**3009TBZBB**

black baffle, tuscan bronze gimbal

### 3010

super adjustable - 0-75° adjustment



**3010WH**

white baffle, white trim

**Pull Down / Adjustment**



### 3013

square adjustable gimbal - 35° tilt



**3013WH**

White



**3013TBZ**

Tuscan Bronze



**3013SN**

Satin Nickel



**3013BK**

Black

## 3" lenses & wet location showerlights

### 3007

regressed lens adjustable reflector



#### 3007WHC

specular clear reflector,  
white trim



#### 3007SN

satin nickel reflector,  
satin nickel trim



#### 3007PCC

specular clear reflector,  
polished chrome trim



#### 3007TBZ

tuscan bronze reflector, tuscan  
bronze trim

### 3008

frosted glass perimeter lens



#### 3008FG

white with frosted glass perim-  
eter lens

### 3012

square regressed lens adjustable baffle



#### 3012WHWB

white baffle, white trim



#### 3012SNBB

black baffle, satin nickel trim



#### 3012WHBB

black baffle, white trim



#### 3012SNBB

black baffle, satin nickel trim



#### 3012BKBB

black baffle, black trim



## 3" pinhole, slot & wall wash

### 3001

adjustable pinhole & baffle



#### 3001WHWB

White Baffle, White Trim



#### 3001BKBB

Black Baffle, Black Trim



#### 3001WHBB

Black Baffle, White Trim



#### 3001TBZBB

Black Baffle, Tuscan Bronze Trim



#### 3001SNBB

Black Baffle, Satin Nickel Trim

### 3002

adjustable pinhole reflector



#### 3002WHC

clear reflector, white trim

### 3006

adjustable slot aperture



#### 3006WHBB

black baffle, white trim

### 3020

wall wash downlight



#### 3020WW

wall wash downlight, white trim

### 3022

square lens wall wash



#### 3022WHWB

white trim, white baffle



#### 3022WHBB

white trim, black baffle

### 3021

angle cut conical reflector, lens wall wash



#### 3021WHW

white reflector, white trim



#### 3021WHC

clear reflector, white trim



#### 3021WHH

haze reflector, white trim



## H36 low voltage housings



### H36MR16ICAT

3" ICAT shallow, low voltage  
Gx5.3 base, new construction,  
120-277V



### H36MR16RICAT

3" ICAT shallow, low voltage  
Gx5.3 base, remodel, 120-277V



## H36 line voltage housings



### H36PAR16ICAT

3" ICAT shallow, GU10 base,  
new construction, 120V



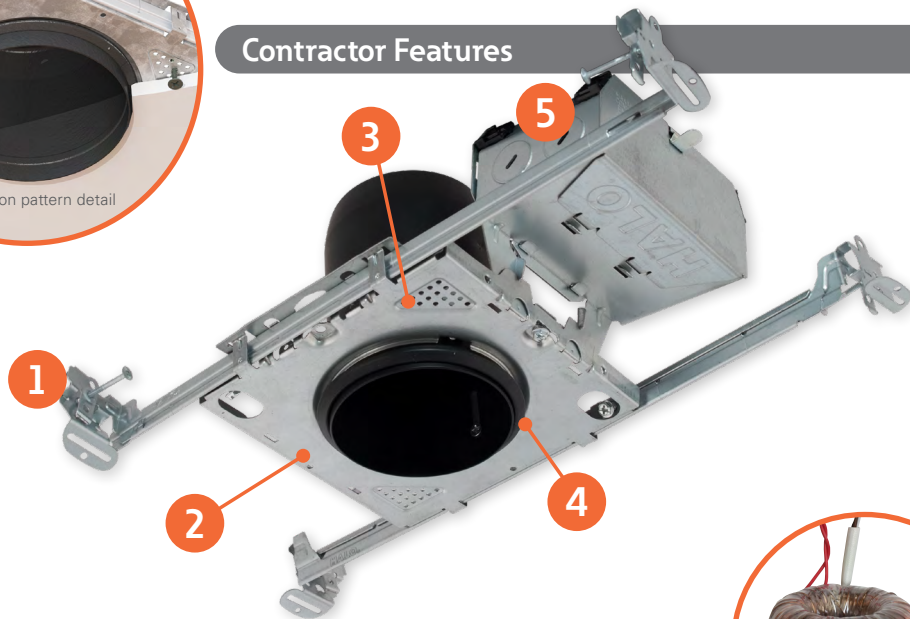
### H36PAR16RICAT

3" ICAT shallow, GU10 base,  
remodel, 120V



perforation pattern detail

## Contractor Features



H36 MR16 new construction housings feature a toroidal wound, magnetic step-down transformer with 120/277V input and 12V 10W nominal output that is highly efficient and low noise. The remodeler housing uses the same transformer with 120V input only. The transformer is integral to the junction box and can be serviced from below the ceiling through the aperture.



### 1. Got-Nail™ bar hangers

- Q-channel interlocking bars for secure adjustment
- Pass-N-Thru feature allows bars to pass through each other for adjustment and tool-less shortening without removal
- Housing can be positioned at any point within 24" joist span

### 2. Compact plaster frame

- (2) Locking screws maintain positioning
- Housing can be positioned anywhere along bar hanger and tight to joists

### 3. Perforation pattern

- Accepts wall board screws anchoring the housing to the ceiling
- Eliminates housing 'bounce' and trim gap to ceiling

### 4. AIR-TITE gasket

- Pre-installed compression gasket with a special can design that limits airflow and seals the can, frame & ceiling
- No additional gaskets or caulk required - saving installation time and money
- Tested to ASTM-E283-04 standard

### 5. Slide-N-Side junction box

- Hinged captive cover, box repositionable on the frame to clear obstructions
- Slide-N-Side wire traps and quick connects allow non-metallic sheathed cable to be installed outside the box, without tools and without removing knockouts.
- Accommodates standard non-metallic sheathed cable:
  - U.S.: #14/2, #14/3, #12/2, #12/3
  - Canada: #14/2, #14/3, #12/2

# E44

## 4-inch housings and trims

A family of 4-inch housings and trims optimized for use with LED lamps delivering longer life and energy savings. The ultra-shallow housings are available in new construction and remodel types suitable for 2x4 framing or shallow plenum installation. The compact plaster frame with repositionable junction box fits in tight spacing.

The line voltage housings with GU10 base are available in 10 or 20 watt ratings and can be used with LED or halogen lamp types. The low voltage housings with Gx5.3 base and integral 120-277V step down transformer is rated at 10 watts maximum, ideal for use with LED MR16 lamps.

Trims are also optimized for use with LED lamps and are available in round and square apertures in a range of finishes to match many decors. The E44 round and square pinhole trims match the appearance of the ML4 series allowing lamp and light engine based solutions to be combined while maintaining a consistent look.





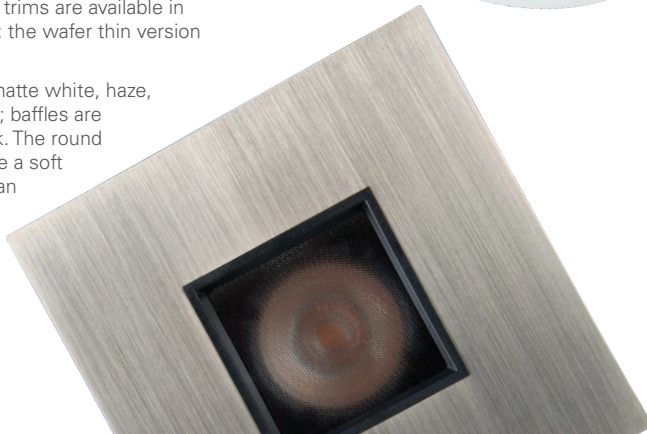


## E44 trims

The E44 trims are offered in open, lens and lens wall wash in both round and square apertures. They are adjustable and feature 360° rotation, 35° tilt and when combined with various distribution lamps provide a broad range of optical distributions providing accent, task, wall washing / grazing and general area illumination.

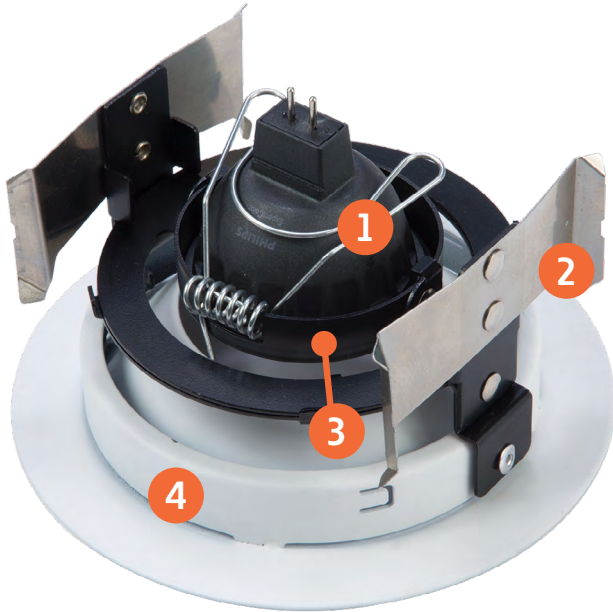
The conical reflectors are true 3-1/2" aperture and are full cutoff providing visually comfortable lighting. Pinhole trims are 2" nominal aperture and compliment the ML4 pinhole trims for a consistent appearance. All E44 series trims are available in full overlap and wafer thin flange styles; the wafer thin version provides minimal ceiling presence.

Most E44 series trims are available in matte white, haze, satin nickel and german bronze finishes; baffles are available in matte white and matte black. The round and square all acrylic glass trims provide a soft edge glow and distinctive appearance, an integral micro-prismatic lens softens the beam and obscures the lamp appearance.



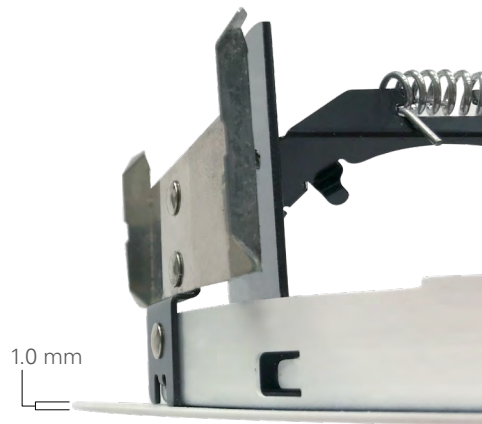
## Lamp Installation and adjustment

1. Coil spring holds lamp securely in position.
2. Friction blades hold trim securely to housing.
3. Accepts (1) lens or louver.
4. Rotates 360°.
5. Four prongs align the lamp and lens to aperture. Accommodates various lamp constructions.
6. Tilts up to 35°. Lever arm locks in at 2.5° increments.



## Wafer thin trims

The E44 wafer thin trims are used with the new construction housings. The 1.0 mm thin profile provides minimal ceiling presence.



### Directional open

#### 1430

conical reflector



**1430MWWF**  
matte white, white flange



**1430H**  
haze



**1430HWF**  
haze, white flange



**1430BN**  
brushed nickel



**1430GB**  
german bronze

#### 1431

conical baffle



**1431WBWF**  
white baffle, white flange



**1431BBWF**  
black baffle, white flange



**1431BN**  
brushed nickel



**1431GB**  
german bronze

#### 1434

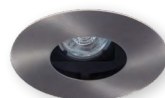
round pinhole



**1434MW**  
matte white



**1434MB**  
matte black



**1434BN**  
brushed nickel



**1434GB**  
german bronze



## 1435

round pinhole with oculus



**1435MWWB**

matte white, white baffle



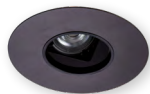
**1435MWBB**

matte white, black baffle



**1435BNBB**

brushed nickel, black baffle



**1435GBBB**

german bronze, black baffle

## 1464

square pinhole



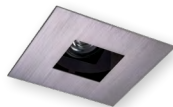
**1464MW**

matte white



**1464MB**

matte black



**1464BN**

brushed nickel



**1464GB**

german bronze

## 1465

square pinhole with oculus



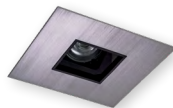
**1465MWWB**

matte white, white baffle



**1465MWBB**

matte white, black baffle



**1465BNBB**

brushed nickel, black baffle



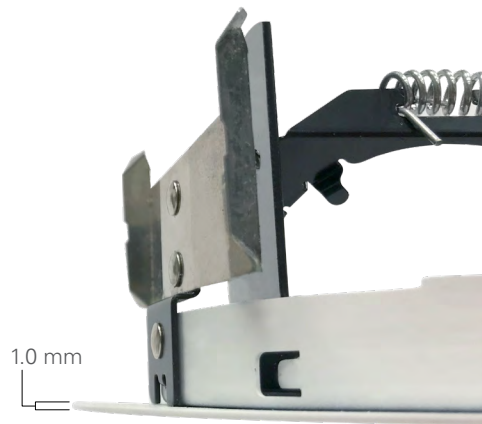
**1465GBBB**

german bronze, black baffle



## Wafer thin trims

The E44 wafer thin trims are used with the new construction housings. The 1.0 mm thin profile provides minimal ceiling presence.



### Directional lens

#### 1433

conical reflector, diffuse lens



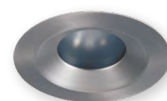
**1433MWWF**  
matte white, white flange



**1433H**  
haze



**1433HWF**  
haze, white flange



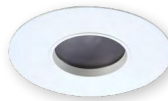
**1433BN**  
brushed nickel



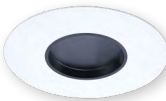
**1433GB**  
german bronze

#### 1437

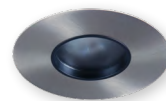
round pinhole, diffuse lens



**1437MWWB**  
matte white, white baffle



**1437MWBB**  
matte white, black baffle



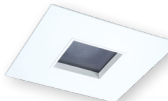
**1437BNBB**  
brushed nickel, black baffle



**1437GBBB**  
german bronze, black baffle

#### 1467

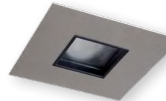
square pinhole, diffuse lens



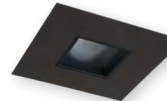
**1467MWWB**  
matte white, white baffle



**1467MWBB**  
matte white, black baffle



**1467BNBB**  
brushed nickel, black baffle



**1467GBBB**  
german bronze, black baffle

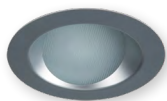
## 1432

angle cut conical reflector, lens wall wash



**1432MWWF**

matte white, white flange



**1432H**

haze

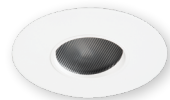


**1432HWF**

haze, white flange

## 1436

round pinhole, lens wall wash



**1436MWWB**

matte white, white baffle



**1436MWBB**

matte white, black baffle

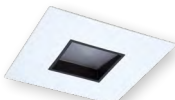
## 1466

square pinhole, lens wall wash



**1466MWWB**

matte white, white baffle



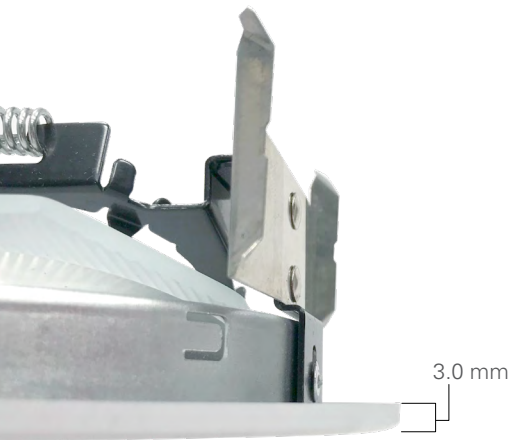
**1466MWBB**

matte white, black baffle



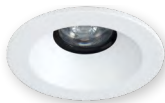
## Full overlap trims

The E44 full overlap trims are used with both new construction and remodeler housings. The full overlap flange style trims match the ML4 trim series.



Directional open

### 1440 conical reflector



**1440MWWF**  
matte white, white flange



**1440H**  
haze



**1440HWF**  
haze, white flange



**1440BN**  
brushed nickel



**1440GB**  
german bronze

### 1441 conical baffle



**1441WBWF**  
white baffle, white flange



**1441BBWF**  
black baffle, white flange



**1441BN**  
brushed nickel



**1441GB**  
german bronze

### 1444 round pinhole



**1444MW**  
matte white



**1444MB**  
matte black



**1444BN**  
brushed nickel



**1444GB**  
german bronze



## 1445

round pinhole with oculus



**1445MWWB**  
matte white, white baffle



**1445MWBB**  
matte white, black baffle



**1445BNBB**  
brushed nickel, black baffle



**1445GBBB**  
german bronze, black baffle

## 1484

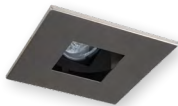
square pinhole



**1484MW**  
matte white



**1484MB**  
matte black



**1484BN**  
brushed nickel



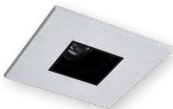
**1484GB**  
german bronze

## 1485

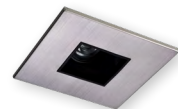
square pinhole with oculus



**1485MWWB**  
matte white, white baffle



**1485MWBB**  
matte white, black baffle



**1485BNBB**  
brushed nickel, black baffle



**1485GBBB**  
german bronze, black baffle



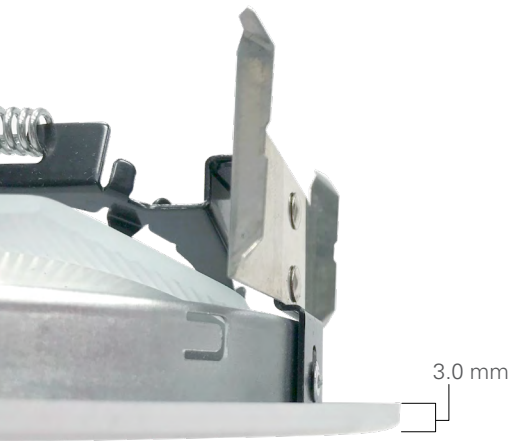
The full overlap flange style trims are supplied with E26 to GU10 adapters for use with Halo H99 or compatible housings.



Check [www.soraa.com](http://www.soraa.com) for compatibility.

## Full overlap trims

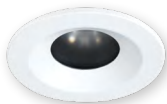
The E44 full overlap trims are used with both new construction and remodeler housings. The full overlap flange style trims match the ML4 trim series.



### Directional lens

#### 1443

conical reflector, diffuse lens



**1443MWWF**  
matte white, white flange



**1443H**  
haze



**1443HWF**  
haze, white flange



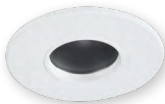
**1443BN**  
brushed nickel



**1443GB**  
german bronze

#### 1447

round pinhole, diffuse lens



**1447MWWB**  
matte white, white baffle



**1447MWBB**  
matte white, black baffle



**1447BNBB**  
brushed nickel, black baffle



**1447GBBB**  
german bronze, black baffle

#### 1449

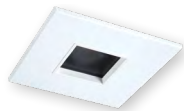
round "all acrylic-glass", diffuse lens



**1449AAG**  
round, all acrylic glass

**1487**

square pinhole, diffuse lens



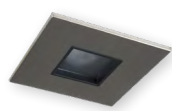
**1487MWBB**

matte white, white baffle



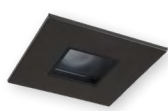
**1487MWBB**

matte white, black baffle



**1487BNBB**

brushed nickel, black baffle



**1487GBBB**

german bronze, black baffle

**1489**

square "all acrylic-glass", diffuse lens



**1489AAG**

square, all acrylic glass

lens wall wash

**1442**

angle cut conical reflector, lens wall wash



**1442MWWF**

matte white, white flange



**1442H**

haze

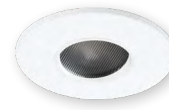


**1442HWF**

haze, white flange

**1446**

round pinhole, lens wall wash



**1446MWWB**

matte white, white baffle

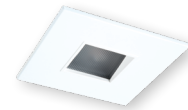


**1446MWBB**

matte white, black baffle

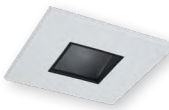
**1486**

square pinhole, lens wall wash



**1486MWWB**

matte white, white baffle



**1486MWBB**

matte white, black baffle



## E44 low voltage housings



### E44MR16ICAT

4" ICAT ultra-shallow,  
low voltage Gx5.3 base,  
new construction, 120-277V



### E44MR16RICAT

4" ICAT ultra-shallow,  
low voltage Gx5.3 base,  
remodel, 120-277V



## E44 line voltage housings



### E44PAR16ICAT

4" ICAT ultra-shallow,  
low voltage GU10 base,  
new construction, 20W 120V



### E44PAR16RICAT

4" ICAT ultra-shallow,  
low voltage GU10 base,  
remodel, 20W 120V

### E44PAR16ICATDR10

4" ICAT ultra-shallow,  
line voltage GU10 base,  
new construction, 10W 120V

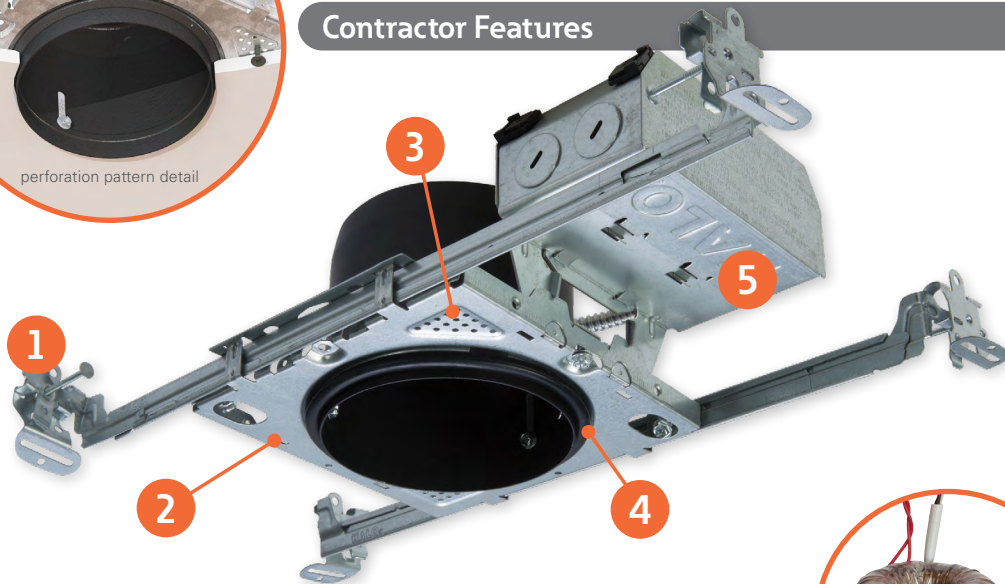
### E44PAR16RICATDR10

4" ICAT ultra-shallow,  
line voltage GU10 base,  
remodel, 10W 120V



perforation pattern detail

## Contractor Features



New construction housings feature a toroidal wound, magnetic step-down transformer with 120/277V input and 12V 10W nominal output that is highly efficient and low noise. The remodeler housing uses the same transformer with 120V input only. The transformer is integral to the junction box and can be serviced from below the ceiling through the aperture.



## 1. Got-Nail™ bar hangers

- Q-channel interlocking bars for secure adjustment
- Pass-N-Thru feature allows bars to pass through each other for adjustment and tool-less shortening without removal
- Housing can be positioned at any point within 24" joist span

## 2. Compact plaster frame

- (2) Locking screws maintain positioning
- Housing can be positioned anywhere along bar hanger and tight to joists

## 3. Perforation pattern

- Accepts wall board screws anchoring the housing to the ceiling
- Eliminates housing 'bounce' and trim gap to ceiling

## 4. AIR-TITE gasket

- Pre-installed compression gasket with a special can design that limits airflow and seals the can, frame & ceiling
- No additional gaskets or caulk required - saving installation time and money
- Tested to ASTM-E283-04 standard

## 5. Slide-N-Side junction box

- Hinged captive cover, box repositionable on the frame to clear obstructions
- Slide-N-Side wire traps and quick connects allow non-metallic sheathed cable to be installed outside the box, without tools and without removing knockouts.
- Accommodates standard non-metallic sheathed cable:
  - U.S.: #14/2, #14/3, #12/2, #12/3
  - Canada: #14/2, #14/3, #12/2

## E26

### expanded collection

Halo has expanded its Fit-All concept with a new collection of 4-Inch, 5-inch and 6-inch housings and trims designed for the new generation of E26 screwbase halogen, LED, and CFL lamps; with a focus on value, streamlined design, and exclusive installation-friendly features.

With continued nationwide adoption of new E26 screw base lamps in LED, CFL, and halogen technologies; Halo has expanded the line with compatible new trim and housing designs. The expanded E26 series is ideal for both residential and light commercial downlighting applications with its versatile installation, attractive design, universally accepted E26 screw base, and capability to employ new energy efficient lamps.

New trims feature a consistent design style in an all-inclusive offering of full-cone and half-cone reflectors and baffles; gimbal and eyeball directionals; open and lensed wet location with “dead-front” options.

Housings feature efficient installation capability in a compact-sized frame with an offering of socket-bracket and no-socket-bracket models. New installation features include a repositionable junction box with hinged door for flexibility in tight spaces; All Nail! bar hangers with new Q-Channel interlocking bars that pass-thru for increased stability and tool-less shortening. Remodels feature an exciting new retention method of speed clamps with locking tabs that adjust for ceilings from 3/8” – 2”.







## 4" housings



### E4ICATSB

4" ICAT new construction, air-tite



### E4TATSB

4" Non-IC new construction, air-tite



### E4RTATSB

4" Non-IC remodel, air-tite



## 4" trims

**4001**

step plastic baffle



**4001WB**

white baffle and trim



**4001BB**

black baffle, white trim

**4002**

eyeball, 30° tilt



**4002WH**

white eyeball

**4003**

reflector



**4003SC**

specular clear, white trim

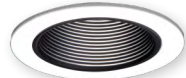
**4010**

metal baffle



**4010WB**

white baffle and trim



**4010BB**

black baffle, white trim

**4055**

glass lens



**4055WH**

glass lens, white trim

**4013**

full cone metal baffle



**4013WB**

white baffle and trim



**4013BB**

black baffle and white trim



## 5" housings



### **E5ICAT**

5" ICAT new construction

### **E5ICATNB**

5" ICAT new construction, no socket bracket



### **E5RICAT**

5" ICAT remodel

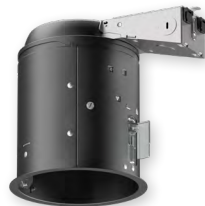


### **E5TAT**

5" Non-IC new construction

### **E5TATNB**

5" Non-IC new construction, no socket bracket



### **E5RTAT**

5" Non-IC remodel

## 5" reflectors

**5107**

specular reflector



**5107SC**

specular reflector, white trim

**5120**

full cone metal reflector



**5120WH**

white reflector and trim



**5120SN**

satin nickel reflector and trim



## 5" baffles

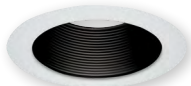
**5102**

tapered metal baffle



**5102WB**

white baffle and trim



**5102BB**

black baffle and white trim

**5109**

coilex® tapered plastic baffle



**5109WB**

white coilex baffle and trim



**5109BB**

black coilex baffle and white trim



**5109BKBB**

black coilex baffle and trim

**5110**

perftex™ plastic baffle



**5110WB**

white perftex baffle and trim



**5110BB**

black perftex baffle and white trim



**5110BKBB**

black perftex baffle and trim

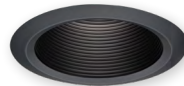
**5125**

full cone metal baffle



**5125WB**

white baffle and trim



**5125BKBB**

black baffle and trim

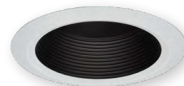
**5126**

shallow full cone metal baffle



**5126WB**

white baffle and trim



**5126BB**

black baffle and white trim



## 5" adjustables

### 5130

eyeball, 35° tilt, PAR30



### 5130WH

white eyeball and trim

### 5165

gimbal, 25° tilt, PAR30



### 5165WH

white gimbal and trim

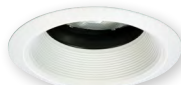


### 5165SN

satin nickel gimbal and trim

### 5222

regressed adjustable gimbal, 30° tilt, 360° rotation



### 5222WB

white baffle and white trim



### 5222SC

specular clear reflector and white trim

### 5135

eyeball, 35° tilt, PAR20



### 5135WH

white eyeball and trim



### 5165BK

black gimbal and trim



### 5165TBZ

tuscan bronze gimbal and trim



### 5222BB

black baffle and white trim



### 5222H

haze reflector and white trim

## 5" showerlights

**5145\***

open wet location shallow  
metal reflector



**5145WH**

white



**5145TBZ**

tuscan bronze

**5146\***

open wet location full  
metal reflector



**5146WH**

white

**5150**

frost glass lens



**5150WH**

frost lens, white plastic trim



**5150TBZ**

frost lens, tuscan bronze  
plastic trim



**5162**

drop opal plastic lens

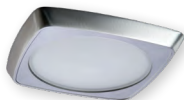


**5162WH**

drop opal plastic lens with upper reflector, white plastic trim

**5230**

squircle frost glass lens, metal trim



**5230AH**

frost glass lens, aluminum haze squircle trim



**5230SN**

frost glass lens, satin nickel squircle trim



**5230PN**

frost glass lens, polished nickel squircle trim



**5230TBZ**

frost glass lens, tuscan bronze squircle trim

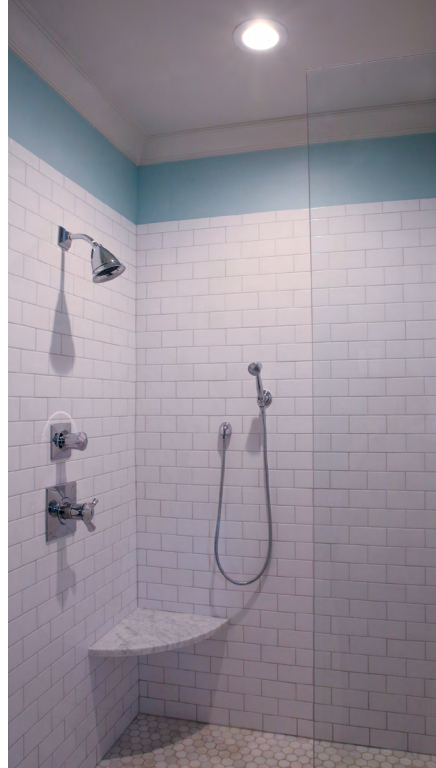
**5255**

soft square, frost glass lens



**5255SN**

frost glass lens, satin nickel plastic trim



## 5" open and splay

**5175**

open, wide metal trim



**5175WH**  
white

**5176** open, wide metal trim, socket supporting



**5176WH**  
white

**5185**

metal splay



**5185WH**  
white

**5186**

metal splay, socket supporting



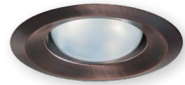
**5186WH**  
white



**5175TBZ**  
tuscan bronze



**5176SN**  
satin nickel



**5185TBZ**  
tuscan bronze



**5186SN**  
satin nickel



**5186TBZ**  
tuscan bronze

## 6" housings



### **E7ICAT**

6" ICAT new construction

### **E7ICATNB**

6" ICAT new construction, no socket bracket



### **E7RICAT**

6" ICAT remodel

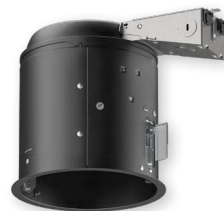


### **E7TAT**

6" Non-IC new construction

### **E7TATNB**

6" Non-IC new construction, no socket bracket



### **E7RTAT**

6" Non-IC remodel

## 6" shallow housings



**E27ICAT**

6" shallow ICAT new construction



**E27RICAT**

6" shallow ICAT remodel



**E27TAT**

6" shallow Non-IC new construction



**E27RTAT**

6" shallow Non-IC remodel

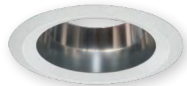




## 6" reflectors

### 6106

straight reflector



### 6106SC

specular reflector, white trim

### 6107

tapered reflector



### 6107SC

specular reflector, white trim

### 6120

full cone metal reflector



### 6120WH

white reflector and trim

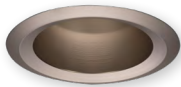
### 6121

shallow full cone metal reflector



### 6121WH

white reflector and trim



### 6120SN

satin nickel reflector and trim



### 6120TBZ

tuscan bronze reflector and trim



## 6" baffles

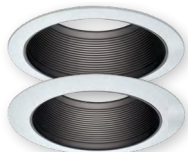
### 6100

tapered metal baffle



### 6100WB

white baffle and (2) white trims  
(wide and narrow included)



### 6100BB

black baffle and (2) white trims  
(wide and narrow included)

### 6101

straight metal baffle



### 6101WB

white baffle and (2) white trims  
(wide and narrow included)



### 6101BB

black baffle and (2) white trims  
(wide and narrow included)

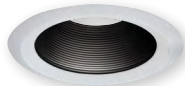
### 6102

tapered metal baffle



### 6102WB

white baffle and trim



### 6102BB

black baffle and white trim

### 6103

straight metal baffle



### 6103WB

white baffle and trim

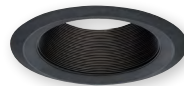


### 6103BB

black baffle and trim

### 6108

coilex® straight plastic baffle



### 6108BKBB

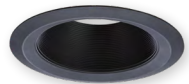
black coilex baffle and trim

**6109**

coilex® tapered plastic baffle

**6109BB**

black coilex baffle and white trim

**6109BKBB**

black coilex baffle and trim

**6110**

perftex™ plastic baffle

**6110WB**

white perftex baffle and trim

**6110BB**

black perftex baffle and white trim

**6110BKBB**

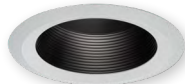
black perftex baffle and trim

**6125**

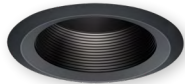
full cone metal baffle

**6125WB**

white baffle and trim

**6125BB**

black baffle and white trim

**6125BKBBB**

black baffle and trim

**6126**

shallow full cone metal baffle

**6126WB**

white baffle and trim

**6126BB**

black baffle and white trim

## 6" adjustables

**6130**

eyeball, 35° tilt PAR30



**6130WH**

white eyeball and trim

**6170**

gimbal, 25° tilt PAR38



**6170WH**

white gimbal and trim



**6170SN**

satin nickel gimbal and trim



**6170BK**

black gimbal and trim



**6170TBZ**

tuscan bronze gimbal and trim



## 6215

double gimbal 35°-50° tilt, PAR38



### 6215WH

white gimbal and trim



### 6215SN

satin nickel gimbal and trim



### 6215BK

black gimbal and trim



### 6215TBZ

tuscan bronze gimbal and trim

## 6222

regressed adjustable, 45° tilt, 360° rotation



### 6222WB

white baffle and white trim



### 6222H

haze reflector and white trim



## 6" showerlights

**6145\***

open wet location shallow  
metal reflector



**6145WH**  
white



**6145SN**  
satin nickel

**6146\***

open wet location full  
metal reflector



**6146WH**  
white



**6146SN**  
satin nickel



**6146TBZ**  
tuscan bronze

**6150**

frost glass lens



**6150WH**  
frost lens, white plastic trim



**6150SN**  
frost lens, satin nickel  
plastic trim



**6150TBZ**  
frost lens, tuscan bronze  
plastic trim

**6160**

drop opal plastic lens



**6160WH**  
drop opal plastic lens,  
white plastic trim

**6162**

drop opal plastic lens



**6162WH**  
drop opal plastic lens with upper  
reflector, white plastic trim



**6230**

squirle frost glass lens, metal trim



**6230SN**

frost glass lens,  
satin nickel squirle trim

**6255**

soft square, frost glass lens



**6255SN**

frost glass lens, satin nickel  
plastic trim



**6255TBZ**

frost glass lens, tuscan bronze  
plastic trim



## Lighting Product Lines

Ametrix  
AtLite  
Corelite  
Ephesus  
Fail-Safe  
Halo  
Halo Commercial  
Invue  
io  
Iris  
Lumark  
Lumière  
McGraw-Edison  
Metalux  
MWS  
Neo-Ray  
Portfolio  
RSA  
Shaper  
Streetworks  
Sure-Lites

## Our Controls Product Lines

Fifth Light Technology  
Greengate  
iLight (International Only)  
iLumin  
Zero 88

## Connected Lighting Systems

Distributed Low-Voltage Power  
HALO Home  
iLumin Plus  
Enlighted  
WaveLinx  
Trellix



### Cooper Lighting Solutions

1121 Highway 74 South  
Peachtree City, GA 30269  
P: 770-486-4800  
[www.cooperlighting.com](http://www.cooperlighting.com)

### Canada Sales

5925 McLaughlin Road  
Mississauga, Ontario L5R 1B8  
P: 905-501-3000  
F: 905-501-3172



© 2021 Cooper Lighting Solutions  
All Rights Reserved  
Printed in USA  
Publication No. BR51807621  
September 2021

Cooper Lighting Solutions is a registered trademark.

All other trademarks are property of their respective owners.

Product availability, specifications, and compliances are subject to change without notice.