

Project		Catalog #		Type	
Prepared by		Notes		Date	



Lumark

NFFLD-L Night Falcon Large

Floodlight Luminaire

Product Certifications & Features



Interactive Menu

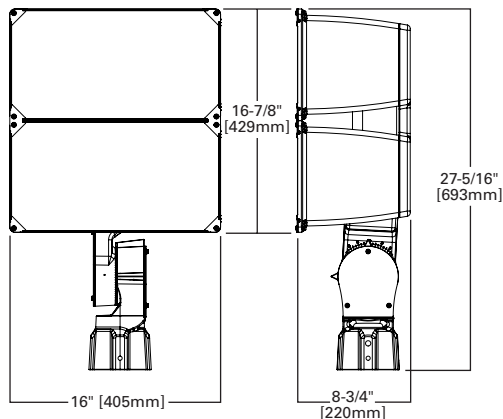
- Ordering Information page 2
- Product Specifications page 2
- Mounting Details page 3
- Energy and Performance Data page 4

Quick Facts

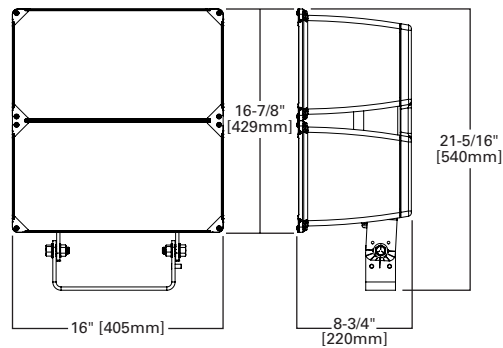
- Up to 163 lumens per watt
- Two optical distributions (wide and spot)
- 6 Lumen packages ranging from 28,000 - 57,900 nominal lumens (180 - 390W)
- Replaces 750 - (2) 1,000W HID

Dimensional Details

Slipfitter Mount



Trunnion Mount



Ordering Information

Sample Number: NFFLD-L-C100-D-UNV-66-S-CB-PER

Product Family ^{1,2}	Light Engine ³	Driver ⁴	Voltage	Distribution	Mounting	Color
NFFLD-L =Night Falcon Large BAA-NFFLD-L =Night Falcon Large, Buy American Act Compliant ¹³ TAA-NFFLD-L =Night Falcon Large, Trade Agreements Act Compliant ¹³ BABA-NFFLD-L =Night Falcon Large, Build America Buy America Act Compliant ¹⁵	C100 =33,900 Nominal Lumens C75 =25,900 Nominal Lumens C125 =38,000 Nominal Lumens C150 =43,000 Nominal Lumens C175 =48,000 Nominal Lumens	D =Dimming (0-10V)	UNV =120-277V 347 =347V 480 =480V ⁸	66 =NEMA 6H x 6V Wide 33 =NEMA 3H x 3V Spot ⁶	S =Slipfitter ⁷ T =Trunnion Y =Yoke	CB =Carbon Bronze (Standard) BK =Black BZ =Bronze AP =Grey WH =White WHT =Summit White DP =Dark Platinum GM =Graphite Metallic
Options (Add as Suffix)			Accessories (Order Separately) ^{10,14}			
7030 =70 CRI / 3000K ⁸ 7050 =70 CRI / 5000K ⁸ 7060 =70 CRI / 5700K ⁸ 8040 =80 CRI / 4000K PER =NEMA 3-PIN Twistlock Photocontrol Receptacle PER7 =NEMA 7-PIN Twistlock Photocontrol Receptacle ⁹ 10K =10kV/10kA UL 1449 Surge Protective Device			FA63 =3" O.D. Surface Mount Bracket RAB-X =Right Angle Bracket for Slipfitter SAB-X =Steel Angle Bracket for Trunnion TYS-XX =Slipfitter Adapter for 2-3/8", 3" or 3-1/2" O.D. Tenon OA1223 =10kV/10kA UL 1449 Surge Protective Device Replacement OA/RA1013 =Photocontrol Shorting Cap OA/RA1014 =NEMA Photocontrol - 120V OA/RA1016 =NEMA Photocontrol - Multi-Tap OA/RA1027 =NEMA Photocontrol - 480V OA/RA1201 =NEMA Photocontrol - 347V TS2HW/NFFLD-XX =Top and Side Visors ¹¹ VSHW/NFFLD =Vandal Shield ¹¹ WGHW/NFFLD =Wire Guard ¹¹ WOLC-7P-10A =WaveLinX Outdoor Control Module (7-pin) ¹²			

- NOTES:**
- DesignLights Consortium® Qualified. Refer to www.designlights.org Qualified Products List under Family Models for details.
 - Customer is responsible for engineering analysis to confirm pole and fixture compatibility for all applications. Refer to our pole white paper WP513001EN for additional support information.
 - Standard 4000K CCT and minimum 70 CRI. Consult IES file for actual lumen output.
 - Consult factory for driver surge protection values.
 - Only for use with 480V Wye systems. Per NEC, not for use with ungrounded systems, impedance grounded systems or corner grounded systems (commonly known as Three Phase Three Wire Delta, Three Phase High Leg Delta and Three Phase Corner Grounded Delta systems).
 - Only available in C75 and C100 light engines.
 - Fits 2-3/8" to 3" O.D. tenon, wire leads run through slipfitter.
 - Extended lead times apply. Use dedicated IES files for 3000K, 5000K and 5700K when performing layouts. These files are published on the Night Falcon large luminaire product page on the website.
 - Must order with dimming driver.
 - Replace XX with paint color.
 - Cannot combine TS2HW/NFFLD (Top and Side Visor), VSHW/NFFLD (Vandal Shield), or WGHW/NFFLD (Wire Guard), limited to one external guard per fixture.
 - Requires 7-pin NEMA twistlock photocontrol receptacle and Universal (120-277V) voltage operation. The WOLC-7 cannot be used in conjunction with additional sensors or controls.
 - Only product configurations with these designated prefixes are built to be compliant with the Buy American Act of 1933 (BAA) or Trade Agreements Act of 1979 (TAA), respectively. Please refer to DOMESTIC PREFERENCES website for more information. Components shipped separately may be separately analyzed under domestic preference requirements.
 - Accessories sold separately will be separately analyzed under domestic preference requirements. Consult factory for further information.
 - Only product configurations with these prefixes are built to be compliant with the Buy American Act of 1933 (BAA) or the Build America Buy America Act (BABA). BABA is the minimum Government compliance requirement for the Build America Buy America standards which is part of the Infrastructure and Investment Jobs Act (IIJA). Individual Government Agencies may have more stringent compliance standards. Please refer to the [DOMESTIC PREFERENCES](#) website or consult the CLS Domestic Preferences team for more information. Components shipped separately may be separately analyzed under domestic preference requirements.

Stock Ordering Information

Stock Sample Number: NFFLD-L-C100-S

Series	Light Engine	Mounting	Voltage
NFFLD-L =Night Falcon Large	C100 =33,900 Nominal Lumens C75 =25,900 Nominal Lumens	S =Slipfitter T =Trunnion	[Blank] =120-277V 347 =347V

NOTES: Options not available with stock products. Order accessories as separate items for field installation. Refer to standard ordering information to add options. Refer to In-Stock Guide for availability. Stock fixture is 4000K, non-dimming, 6x6 distribution, 120-277V or 347V, carbon bronze only. 347V only available with PC2.

Product Specifications

Construction

- Heavy-duty, die-cast aluminum housing, driver compartment, and driver housing door
- Driver compartment and optical chamber are IP66 rated
- Driver maintenance access via removable door using pan head screws
- One-piece silicone gasket seals the door to the fixture housing

Optics

- Vacuum-metallized reflector for high-efficiency illumination
- NEMA type 6H x 6V and 3H x 3V distributions available
- Clear, tempered glass lens with full circumference form-in-place silicone gasket protects optics from damage

Electrical

- LED driver is mounted to removable die-cast aluminum door
- Standard 0-10V dimming
- Integral 6kV surge is standard
- Ambient operating temperatures from -40°C to 40°C

- Greater than 93% lumen maintenance expected at 60,000 hours per IESNA TM-21

Mounting

- Suitable for mounting within 4' (1.2m) of the ground
- Heavy-gauge steel trunnion and yoke mounts are supplied with 3ft of pre-wired 14/3 SOW wet location rated cord
- Die-cast aluminum slipfitter with a tooth-lock adjustment that can be adjusted in 5" increments. Slipfitter mounts to 2-3/8" or 3" O.D. tenons
- Effective Projected Area: 2.5 sq. ft.

Compliance

- DLC and DLC Premium listed – visit designlights.org to confirm listed variations
- BAA domestic preference option meets BAA requirements. See [DOMESTIC PREFERENCES](#) website or consult the CLS Domestic Preferences team for more information
- FHWA and FTA agencies are utilizing their BAA rules for BABA compliance. Cooper's products with a BAA designation are manufactured in the US and utilize a BAA COTS exemption rule for compliance. To verify a configured product with specific accessories

and options meet BABA Domestic Preference Requirements; submit this catalog number to Cooper Lighting Quotation team for validation by our Engineering and Manufacturing teams. Please refer to the [DOMESTIC PREFERENCES](#) website or consult the CLS Domestic Preferences team for more information. Components shipped separately may be separately analyzed under domestic preference requirements

Finish

- Housing and cast parts finished in five-stage super TGIC polyester powder coat paint, 2.5 mil nominal thickness for superior protection against fade and wear

Shipping Data

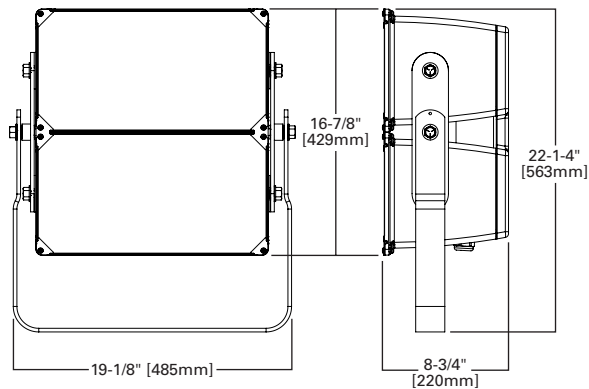
- Approximate net weight: 48 lbs. (22 kgs.)
- Approximate Net Weight: 55 lbs. (25 kgs.) - with Yoke

Warranty

- Five-year limited warranty. Consult website for details. www.cooperlighting.com/legal

Dimensional Details

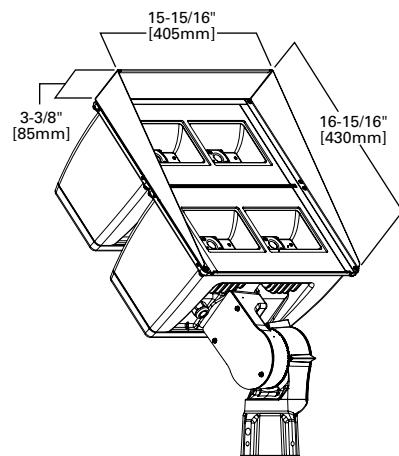
Yoke Mount Dimensions



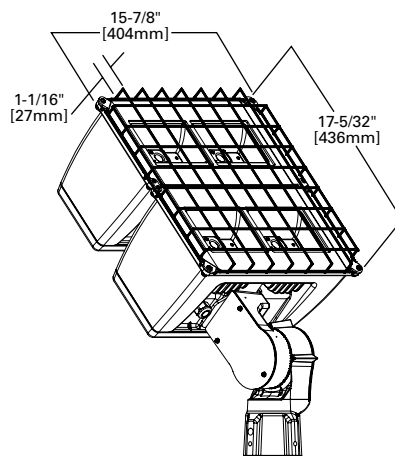
Mounting Details

Accessories

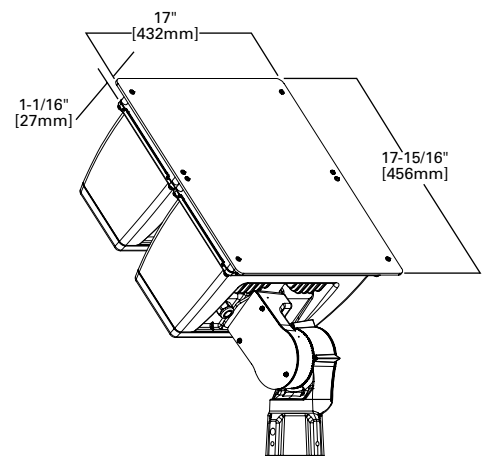
Top and Side Visors



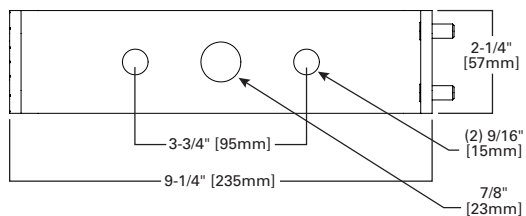
Wire Guard



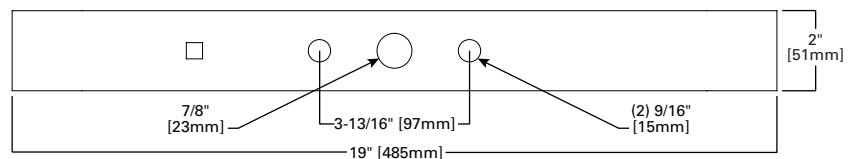
Vandal Shield



Trunnion Mount Drilling Patterns



Yoke Mount Drilling Patterns



Energy and Performance Data

Power and Lumens

	6x6				3x3			
C75 LED	NFFLD-L-C75	NFFLD-L-C75-7030	NFFLD-L-C75-7050	NFFLD-L-C75-7060	NFFLD-L-C75	NFFLD-L-C75-7030	NFFLD-L-C75-7050	NFFLD-L-C75-7060
Delivered Lumens	25,444	24,459	25,088	24,689	24,193	23,257	23,855	23,466
CCT (Kelvin)	4000K	3000K	5000K	6000K	4000K	3000K	5000K	6000K
CRI (Color Rendering Index)	70	70	70	70	70	70	70	70
Power Consumption (Watts)	179W	179W	179W	179W	236W	236W	236W	236W
C100 LED	NFFLD-L-C100	NFFLD-L-C100-7030	NFFLD-L-C100-7050	NFFLD-L-C100-7060	NFFLD-L-C100	NFFLD-L-C100-7030	NFFLD-L-C100-7050	NFFLD-L-C100-7060
Delivered Lumens	33,289	32,001	32,823	32,301	28,739	27,627	28,337	27,886
CCT (Kelvin)	4000K	3000K	5000K	6000K	4000K	3000K	5000K	6000K
CRI (Color Rendering Index)	70	70	70	70	70	70	70	70
Power Consumption (Watts)	252W	252W	252W	252W	284W	284W	284W	284W
C125 LED	NFFLD-L-C125	NFFLD-L-C125-7030	NFFLD-L-C125-7050	NFFLD-L-C125-7060				
Delivered Lumens	37,481	36,474	37,859	36,357				
CCT (Kelvin)	4000K	3000K	5000K	6000K				
CRI (Color Rendering Index)	70	70	70	70				
Power Consumption (Watts)	268W	268W	268W	268W				
C150 LED	NFFLD-L-C150	NFFLD-L-C150-7030	NFFLD-L-C150-7050	NFFLD-L-C150-7060				
Delivered Lumens	42,271	41,134	42,697	41,002				
CCT (Kelvin)	4000K	3000K	5000K	6000K				
CRI (Color Rendering Index)	70	70	70	70				
Power Consumption (Watts)	316W	316W	316W	316W				
C175 LED	NFFLD-L-C175	NFFLD-L-C175-7030	NFFLD-L-C175-7050	NFFLD-L-C175-7060				
Delivered Lumens	47,106	45,840	47,581	45,693				
CCT (Kelvin)	4000K	3000K	5000K	6000K				
CRI (Color Rendering Index)	70	70	70	70				
Power Consumption (Watts)	371W	371W	371W	371W				

Current Draw

Voltage (V)	6x6					3x3	
	NFFLD-L-C75	NFFLD-L-C100	NFFLD-L-C125	NFFLD-L-C150	NFFLD-L-C175	NFFLD-L-C75	NFFLD-L-C100
	Current (A)	Current (A)	Current (A)	Current (A)	Current (A)	Current (A)	Current (A)
120V	1.499	2.141	2.279	2.688	3.155	2.008	2.391
277V	0.661	0.923	0.991	1.155	1.341	0.859	1.039
347V	0.539	0.760	0.784	0.924	1.082	0.692	0.841
480V	0.398	0.548	0.565	0.666	0.772	0.509	0.639

Lumen Maintenance

Ambient Temperature	TM-21 Lumen Maintenance (50,000 Hours)	Theoretical L70 (Hours)
25°C	90.3%	>164,000
40°C	88.9%	>158,000

Lumen Multiplier

Ambient Temperature	Lumen Multiplier
10°C	1.03
15°C	1.02
25°C	1.00
40°C	0.97