

Project		Catalog #		Type	
Prepared by		Notes		Date	



HALO

RL56 | LED 900 Series

5"/6" LED Recessed Retrofit Module-Trim

Typical Applications

Residential

Interactive Menu

- Order Information [page 2](#)
- Product Specifications [page 3](#)
- Photometric Data [page 4](#)
- Energy & Performance Data [page 4](#)
- Product Warranty

Top Product Features

- ENERGY STAR® certified
- 90 CRI: 2700K, 3000K, 3500K, 4000K, or 5000K CCT
- Lumens: 600, 900, 1200
- Retrofits existing 5 or 6" housings with screwbase adapter included"
- Use with 5 and 6" LED housings – new construction and remodel"

Product Certification

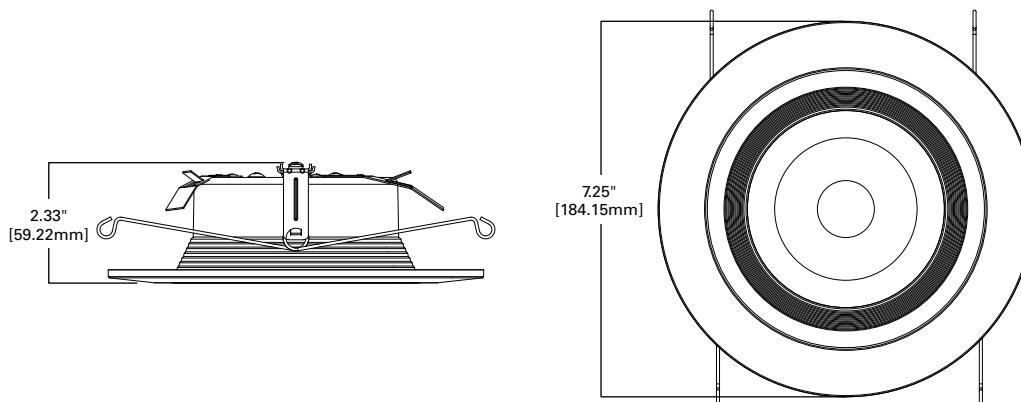


Refer to ENERGY STAR® Certified Products List.
Can be used to comply with California Title 24 High Efficacy requirements.
Certified to California Appliance Efficiency Database under JAB.

Product Features



RL56 Dimensions




[additional product diagrams](#)

Order Information

SAMPLE ORDER NUMBER: **RL560WH9927-RL56TRMSNB**

Complete unit includes a RL56 Baffle-Trim LED Module and a 5" or 6" compatible housing, ordered separately. Optional accessory designer trim ring ordered separately.

RL56 900 Series	Accessories (order separately)
<p>RL560WH9927= 5"/6" Retrofit Baffle - Trim LED Module, 90CRI, 2700K, Matte White</p> <p>RL560WH9930= 5"/6" Retrofit Baffle - Trim LED Module, 90CRI, 3000K, Matte White</p> <p>RL560WH9935= 5"/6" Retrofit Baffle - Trim LED Module, 90CRI, 3500K, Matte White</p> <p>RL560WH9940= 5"/6" Retrofit Baffle - Trim LED Module, 90CRI, 4000K, Matte White</p> <p>RL560WH9950= 5"/6" Retrofit Baffle - Trim LED Module, 90CRI, 5000K, Matte White</p>	<p>RL56TRMSNB= 5/6" Satin Nickel Trim Ring, Baffle</p> <p>RL56TRMTBZB= 5/6" Tuscan Bronze Trim Ring, Baffle</p> <p>RL56TRMWHB= 5/6" White Paintable Trim Ring, Baffle</p> <p>RL56TRMMBB= 5/6" Matte Black Trim Ring, Baffle</p> <p>RL56TRMSN= 5/6" Satin Nickel Trim Ring</p> <p>RL56TRMTBZ= 5/6" Tuscan Bronze Trim Ring</p> <p>RL56TRMWH= 5/6" White Paintable Trim Ring</p> <p>RL56TRMMB= 5/6" Matte Black Trim Ring</p> <p>OT400P= Oversize Flat White Metal Trim Ring 6" I.D. x 9-1/4" O.D. (ring slips behind RL56 ring, in stepped configuration)</p> <p>OT403P= Oversize White Plastic Trim Ring 6" I.D. x 8" O.D. (ring slips behind RL56 ring, in stepped configuration)</p> <p>TRM690WH= Oversize Matte White Metal Trim Ring. Designed for RL560 ring to inset into oversize ring for an even (non-stepped) trim surface</p> <p>HE26LED= Replacement screw base adapter (one included with unit)</p>  <p>E26 Screw base adapter for retrofit (included)</p>

Housing Compatibility

Compatible Halo LED Housings with LED luminaire connector (high-efficacy compliant)	
<p>Halo LED 5-inch</p> <p>H550ICAT= 5" LED, Insulated Ceiling, Air-Tite, New Construction Housing</p> <p>H550RICAT= 5" LED, Insulated Ceiling, Air-Tite, Remodel Housing</p> <p>E550ICAT= 5" LED, Insulated Ceiling, Air-Tite, New Construction Housing</p> <p>E550RICAT= 5" LED, Insulated Ceiling, Air-Tite, Remodel Housing</p>	<p>Halo LED 6-inch</p> <p>H750ICAT= 6" LED, Insulated Ceiling, Air-Tite, New Construction Housing</p> <p>H750RICAT= 6" LED, Insulated Ceiling, Air-Tite, Remodel Housing</p> <p>H750T= 6" LED, Non-IC, Air-Tite, New Construction Housing</p> <p>H750RINTD010= 6" LED, Non-IC, New Construction/Remodel Chicago Plenum Housing</p> <p>H750TCP= 6" LED, Non-IC, New Construction/Remodel Chicago Plenum Housing</p> <p>H2750ICAT= 6" LED, Shallow, Insulated Ceiling, Air-Tite, New Construction (use with 691X, 694X, 696X trims only)</p> <p>H2750RICAT= 6" LED, Shallow, Insulated Ceiling, Air-Tite, Remodel (use with 691X, 694X, 696X trims only)</p> <p>E750ICAT= 6" LED, Insulated Ceiling, Air-Tite, New Construction Housing</p> <p>E750RICAT= 6" LED, Insulated Ceiling, Air-Tite, Remodel Housing</p>

Housing Compatibility

Halo LED Retrofit Enclosures	
<p>Halo LED retrofit</p> <p>ML7BXRFK= 6" Retrofit Enclosure, Non-IC, BX Whip</p> <p>ML7E26RFK= 6" Retrofit Enclosure, Non-IC, E26 Screw base Interface</p>	

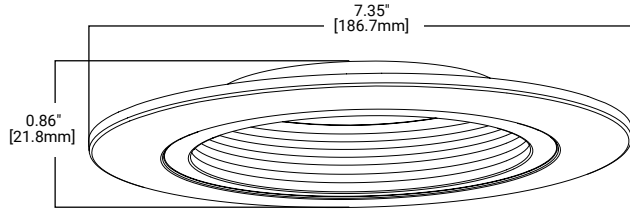
Housing Compatibility

Compatible Halo Incandescent E26 Screwbase Housings	
<p>Halo Standard Housings 5-inch</p> <p>H5ICAT= 5" Insulated Ceiling, Air-Tite New Construction Housing</p> <p>H5RICAT= 5" Insulated Ceiling, Air-Tite Remodel Housing</p> <p>H5ICATNB= 5" Insulated Ceiling, Air-Tite New Construction Housing, No Socket Bracket</p> <p>H5T= 5" Non-IC, New Construction Housing</p> <p>H5RT= 5" Non-IC, Remodel Housing</p> <p>H25ICAT= 5" Shallow, Insulated Ceiling, Air-Tite New Construction</p> <p>H25ICATNB= 5" Shallow, Insulated Ceiling, Air-Tite New Construction, No Socket Bracket</p> <p>E5TAT= 5" Non-IC, New Construction Housing</p> <p>E5RTAT= 5" Non-IC, Remodel Housing</p> <p>H5TNB= 5" Non-IC, New Construction Housing, No Socket Bracket</p> <p>E5TATNB= 5" Non-IC, New Construction Housing, No Socket Bracket</p> <p>E5ICAT= 5" Insulated Ceiling, Air-Tite New Construction Housing</p> <p>E5RICAT= 5" Insulated Ceiling, Air-Tite Remodel Housing</p> <p>E5ICATNB= 5" Insulated Ceiling, Air-Tite New Construction Housing, No Socket Bracket</p> <p>Halo Standard Housings 6-inch</p> <p>H7ICAT= 6" Insulated Ceiling, Air-Tite New Construction Housing</p> <p>H7RICAT= 6" Insulated Ceiling, Air-Tite Remodel Housing</p> <p>H7ICT= 6" Insulated Ceiling, New Construction Housing</p> <p>H7RICT= 6" Insulated Ceiling, Remodel Housing</p>	<p>H7ICATNB= 6" Insulated Ceiling, Air-Tite New Construction Housing, No Socket Bracket</p> <p>H7ICTNB= 6" Insulated Ceiling, New Construction Housing, No Socket Bracket</p> <p>H7T= 6" Non-IC, New Construction Housing</p> <p>H7RT= 6" Non-IC, Remodel Housing</p> <p>H7TNB= 6" Non-IC, New Construction Housing, No Socket Bracket</p> <p>H7TCP= 6" Non-IC, Chicago Plenum, New Construction/Remodel Housing</p> <p>H7UICAT= 6" Insulated Ceiling, Universal, Air-Tite, New Construction Housing</p> <p>H27ICAT= 6" Shallow, Insulated Ceiling, Air-Tite New Construction</p> <p>H27RICAT= 6" Shallow, Insulated Ceiling, Air-Tite Remodel Housing</p> <p>H27T= 6" Shallow, Non-IC, New Construction Housing</p> <p>H27RT= 6" Shallow, Non-IC, Remodel Housing</p> <p>E27ICAT= 6" Shallow, Insulated Ceiling, Air-Tite New Construction</p> <p>E27RICAT= 6" Shallow, Insulated Ceiling, Air-Tite Remodel Housing</p> <p>E27TAT= 6" Shallow, Non-IC, New Construction Housing</p> <p>E27RTAT= 6" Shallow, Non-IC, Remodel Housing</p> <p>E7ICAT= 6" Insulated Ceiling, Air-Tite New Construction Housing</p> <p>E7RICAT= 6" Insulated Ceiling, Air-Tite Remodel Housing</p> <p>E7TAT= 6" Non-IC, New Construction Housing</p> <p>E7RTAT= 6" Non-IC, Remodel Housing</p> <p>E7TATNB= 6" Non-IC, New Construction Housing, No Socket Bracket</p>

RL56 Series LED Retrofit is UL Classified for retrofit in the follow 5/6" recessed housings:

The RL Series LED light module - trim combination is UL Certified for use with any 5"/6" diameter recessed housing constructed of steel or aluminum with an internal volume that exceeds 107.9 in3 in addition to those noted above.

Designer Trim Dimensions



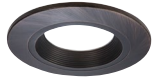
RL56TRMWHB
White (Paintable), Baffle



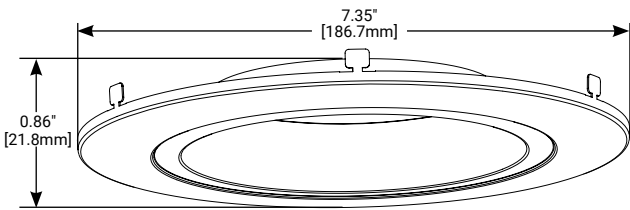
RL56TRMMBB
Matte Black, Baffle



RL56TRMSNB
Satin Nickel, Baffle



RL56TRMTBZB
Tuscan Bronze, Baffle



RL56TRMWH
White (Paintable), Splay



RL56TRMWB
Matte Black, Splay



RL56TRMSN
Satin Nickel, Splay



RL56TRMTBZ
Tuscan Bronze, Splay

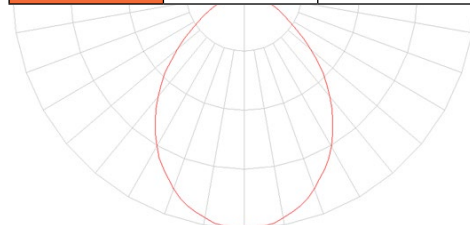
Product and Photometric Data

RL56 - 900 Series

Cat No.	CRI	CCT	Lumens	Power (W)	LPW
RL560WH9927	92	2700	940	12.6	75
RL560WH9930	91	3000	930	12.8	73
RL560WH9935	92	3500	940	12.7	74
RL560WH9940	90	4000	1000	13.2	76
RL560WH9950	90	5000	1015	12.9	79

RL56-900 Series Photometric*

RL560WH6930		
Luminaire lumens		930
Input watts		12.8
LER (LPW)		72.7
Spacing Criteria	0-180	1.16
	90-270	1.16
	Diagonal	1.22
Beam angle (degrees)		88.9
Field angle (degrees)		140
Zonal lumen	Lumens	% Lumens
0-30	341	36.7
0-40	535	57.5
0-60	829	89.1
0-90	930	100



* Tested in accordance with IES LM63. Field results may vary.

Energy Data

RL56 Series (Values at non-dimming line voltage)
Minimum Starting Temp: -30°C (-22°F)
EMI/RFI: FCC Title 47 CFR, Part 15, Class B (Consumer)
Sound Rating: Class A
Input Voltage: 120V
Power Factor: >0.90
Input Frequency: 60Hz
THD: <20%
Input Power: 7.6W – RL560WH6827 7.3W – RL560WH6830, RL560WH6835, RL560WH6840 9.7W – RL560WH6927 8.7W – RL560WH6930, RL560WH6940 9.0W – RL560WH6935
Input Current: 0.15A
Maximum IC (Insulated Ceiling) Ambient Continuous Operating Temperature: 25°C (77°F)
Maximum Non-IC Ambient Continuous Operating Temperature 40°C (104°F)

Product Specifications

Mechanical

Module - Trim

- Module construction includes LED, heat sink, reflector, lens, baffle and trim ring
- Regressed baffle
- Heat sink designed to conduct heat away from the LED keeping the junction temperatures below specified maximums, even when installed in insulated ceiling environments. L70 at 50,000 hours.
- Designer trim finish options (sold separately)
 - White (Paintable) Trim Ring
 - Satin Nickel Trim Ring
 - Tuscan Bronze Trim Ring

Lens

- Regressed lens
- Impact-resistant polycarbonate
- Convex form for lamp-like appearance
- High lumen transmission
- Diffusing for even illumination

Mounting

- Integral torsion springs and Push-N-Twist clips offer two mounting options
 - Torsion springs are pre-installed and adjust to fit 5" or 6" compatible housings
 - Push-N-Twist universal installation clips are pre-installed and designed to fit 5" or 6" compatible housings

Housing Compatibility

See Housing Compatibility

LED

- Color Temperature (CCT)† Options:
 - 90 CRI: 2700K, 3000K, 3500K, 4000K, and 5000K
- Can be used to comply with California Title 24 High Efficacy requirements. Certified to California Appliance Efficiency Database under JA8.

LED Chromaticity

- A tight chromaticity specification ensures LED color uniformity, sustainable Color Rendering Index (CRI) and Correlated Color Temperature (CCT) over the useful life of the LED
- LED chromaticity of 3 SDCM exceeds ENERGY STAR® color standards per ANSI C78.377-2008
- High color performance with R9 greater than 50
- Every Halo LED is quality tested, measured, and serialized in a permanent record to register lumens, wattage, CRI and CCT
- Halo LED serialized testing and measurement ensures color and lumen consistency on a per-unit basis, and validates long-term product consistency over time

Electrical

Power Connections

- LED connector is a non-screw base luminaire disconnect offering easy installation with the matching Halo 5" and 6" LED housings
- LED Connector meets California Title-24 high efficacy luminaire requirement for a non-screw base socket, and where required to qualify as a high efficacy luminaire
- The included E26 medium screw-base Edison adapter provides easy retrofit of incandescent housings (see Housing Compatibility)

Ground Connection

- Separate grounding cable included on the module for attachment to the housing during installation.

LED Driver

- Dimmable driver is a 120 Volt, high efficiency, electronic power supply providing DC power to the LED
- Driver meets FCC 47CFR Part 15 EMI/RFI consumer limits for use in residential and commercial installations
- Driver features high power factor and low THD and has integral thermal protection in the event of over temperature or internal failure

Dimming

- Designed for continuous dimming capability to nominally 5% with many 120V Leading Edge (LE) and Trailing Edge (TE) Phase Control dimmers. (Dimmers with low end trim adjustment offer greater assurance of achieving 5% level.)
- Consult dimmer manufacturer for compatibility and conditions of use

Note: some dimmers require a neutral in the wallbox.

Warranty

Eaton provides a five year limited warranty on RL56 LED.

Compliance Labels

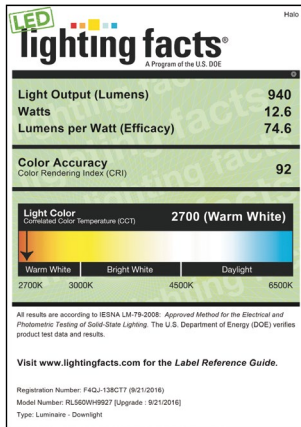
- UL Certified 1598 Luminaire with Halo housings and others – see Housing Compatibility
- UL Certified for Damp Location
- IP56 Ingress Protection rated
- May be installed in housings in direct contact with insulation** and combustible material

Compliance

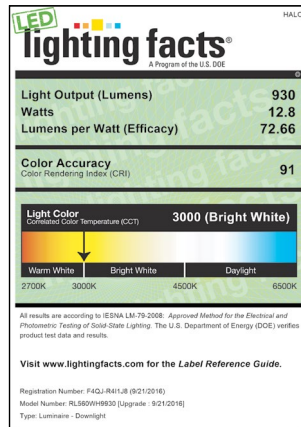
- Airtight certified per ASTM E283 (not exceeding 2.0 CFM under 75 Pascals pressure difference)
- 90 CRI: Can be used to comply with California Title 24 High Efficacy requirements. Certified to California Title 20 Appliance Efficiency Database.*
- 80 CRI: Can be used to comply with California Title 24 Non-Residential Lighting Controls requirements as an LED luminaire
- Can be used for International Energy Conservation Code (IECC) high efficiency luminaire compliance
- Can be used for Washington State Energy Code compliance
- ENERGY STAR® Certified luminaire – consult ENERGY STAR® Certified Product List*
- EMI/RFI per FCC 47CFR Part 15 Class B Consumer limits, suitable for use in residential and commercial installations
- Contains no mercury or lead and RoHS compliant.
- Photometric testing in accordance with IES LM-79
- Lumen maintenance projections in accordance with IES LM-80 and TM-21
- Suitable for use in closets. Compliant with NFPA 70, NEC Sec. 410.16 (A)(1) and 410.16 (C)(3).

Lighting Facts

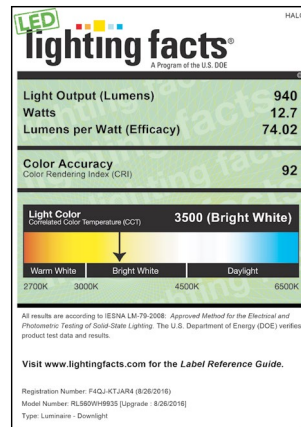
RL560WH9927
2700K Source



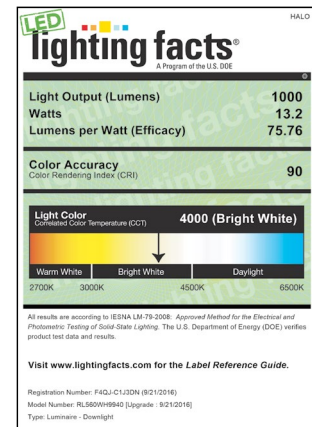
RL560WH9930
3000K Source



RL560WH9935
3500K Source



RL560WH9940
4000K Source



RL560WH9950
5000K Source

