



HALO[®]

L808
LED Track Lighting

L808 LED track lighting



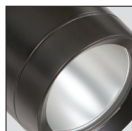
850 Lumen - 12W
1500 Lumen - 21W

2500 Lumen - 35W

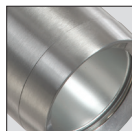
Finishes



White (P)



Black (MB)



Aluminum
Haze (AH)

The Halo LED luminaire family now offers a modern, low profile, tool-less track head in the L808 Series.

The Halo L808 is perfect for those applications where performance is required from a discreet source. This track head utilizes chip on board technology to create a point source design that removes the need for a separate driver box. The light source is regressed deep into the fixture to minimize side glare and increase cutoff. This design makes sure your customers' attention is on your products, and not the light source.

The L808 is a durable, die-cast aluminum construction traditional style flatback cylinder. Available in 3" and 4" diameters with a yoke mount design. It has three different lumen packages: 850lm (3"), 1500lm (3"), and 2500lm (4"). The three optical distributions (NF, FL, SP) can be interchanged in the field without a tool for maximum versatility. The L808 is high efficacy lamp replacement at low wattages (12W, 22W, & 35W). It has a CRI of 90 to ensure colors are viewed at their best and can be ordered in 2700K, 3000K, 3500K and 4000K.

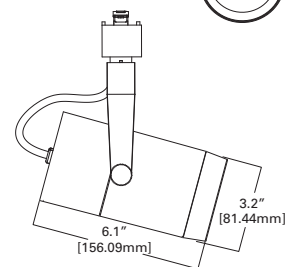
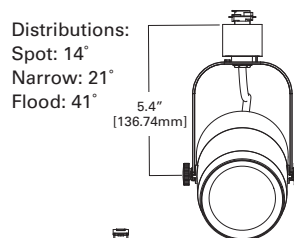
Installer Friendly features

- 3 configurable optics that can be field changed
- Tool-less optical removal
- Tool-less snoot with locking teeth
- Tool-less adjustment $\pm 180^\circ$ vertically and $\pm 350^\circ$ horizontally
- Fixture can hold up to 2 pieces of PAR20/PAR30 media

3-Inch Fixture

12W - 850 Lumen
21W - 1500 Lumen

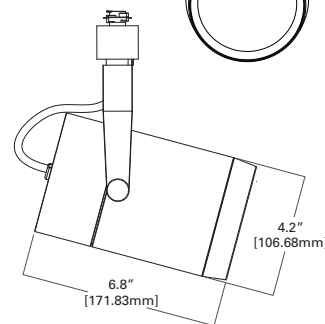
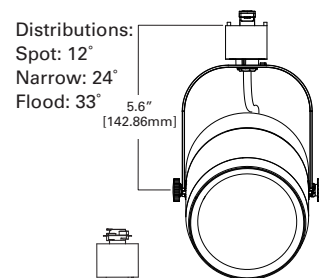
Distributions:
Spot: 14°
Narrow: 21°
Flood: 41°



4-Inch Fixture

35W - 2500 Lumen

Distributions:
Spot: 12°
Narrow: 24°
Flood: 33°



Features*

- Flat back 3" Cylinder (850lm and 1500lm)
- Flat back 4" Cylinder (2500lm)
- 850lm (12W), 1500lm (21W), 2500lm (35W)
- Full selection of 2700K, 3000K, 4000K color temperatures
- Optical distributions Narrow Flood, Flood, and Spot
- Finishes of Matte Black, White, and Aluminum Haze
- 90CRI
- 120V/60Hz
- Triac dimmable down to 5%
- Can hold up to 2 pieces of media (max .270" thick)
- L70 @50,000 hrs
- Five year warranty
- cULus
- DLC listed
- NSF/ANSI 2 (non-food zone)



Can be used to comply with California Title 24 High Efficacy requirements. Certified to California Title 20 Appliance Efficiency Database.



NSF/ANSI 2



* See spec sheet for ordering information.

Cooper Lighting Solutions

1121 Highway 74 South
Peachtree City, GA 30269
P: 770-486-4800
www.halolighting.com

Canada Sales
5925 McLaughlin Road
Mississauga, Ontario L5R 1B8
P: 905-501-3000
F: 905-501-3172

Our Lighting Product Lines

Ametrix
AtLite
Corelite
Ephesus
Fail-Safe
HALO
HALO Commercial
Invue
io
IRiS
Lumark
Lumière
McGraw-Edison
Metalux
MWS
Neo-Ray
Portfolio
RSA
Shaper
Streetworks
Sure-Lites

Our Controls Product Lines

Fifth Light Technology
Greengate
iLight (International Only)
iLumin
Zero 88

Connected Lighting Systems

Distributed Low-Voltage Power
HALO Home
iLumin Plus
LumaWatt Pro
WaveLinx

Cooper Lighting Solutions

1121 Highway 74 South
Peachtree City, GA 30269
P: 770-486-4800
cooperlighting.com

© 2021 Cooper Lighting Solutions
All Rights Reserved
Printed in USA
Publication No. BR518014EN
March 2021

Products, specifications and
compliances are subject to
change without notice.

Cooper Lighting Solutions is a
registered trademark.

All other trademarks are property
of their respective owners.

