



HALO[®]

HL3 3-inch LED downlight

HALO Architectural Lighting Solutions

HL3 3-inch new construction housings

LED recessed luminaires

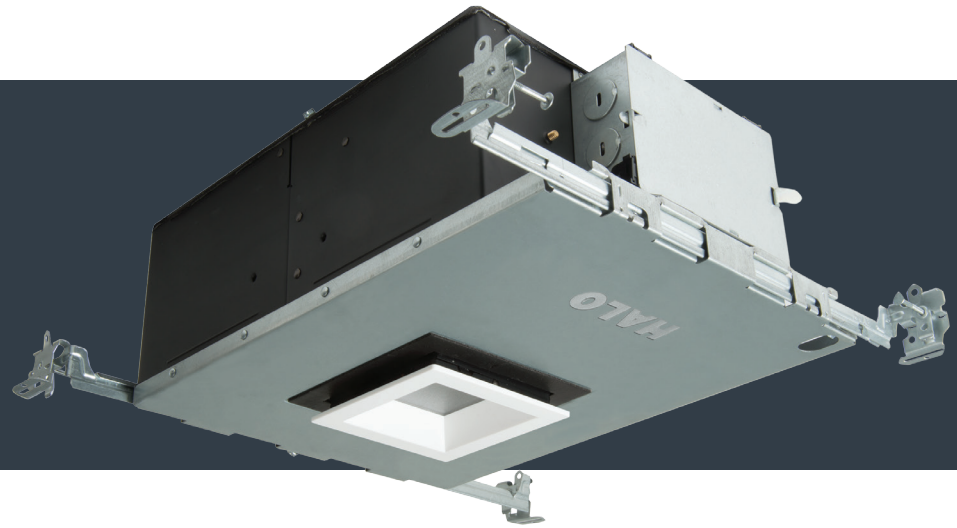
A 3-inch family of round and square aperture LED downlight / directional housings with field interchangeable optics where high efficiency, excellent light control and low aperture brightness are required. The HL3 is ideal for accent, task and general area lighting. Airtight housings, suitable for residential or shallow plenum commercial constructions and can be used in direct contact with insulation.



Seamless Ceiling Integration

Halo now offers a complete family of 3-inch LED recessed downlights ideal for your next demanding project. Choose from round or square apertures available in broad range of trim styles and optical distributions meeting demanding architectural factors including ceiling height, square footage and fixture spacing criteria.

Trims are available in a range of finishes to match many décors. Magnets pull trims tight to the ceiling eliminating gaps and light leaks. Trims maybe installed rimless with a true knife-edge interface creating a quiet ceiling appearance. Symmetrical trims can be used for both general area and accent lighting creating a consistent visual appearance.

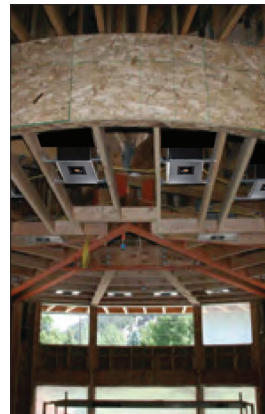




Ease of installation

High-end residential and prestige commercial ceiling construction is complex. Housings have numerous proprietary contractor features and install quickly saving time and money. The same housing type is used for task, accent, wall washing and general area illumination simplifying planning and installation. Optical distribution can be easily changed in the field to adapt to lighting requirements.

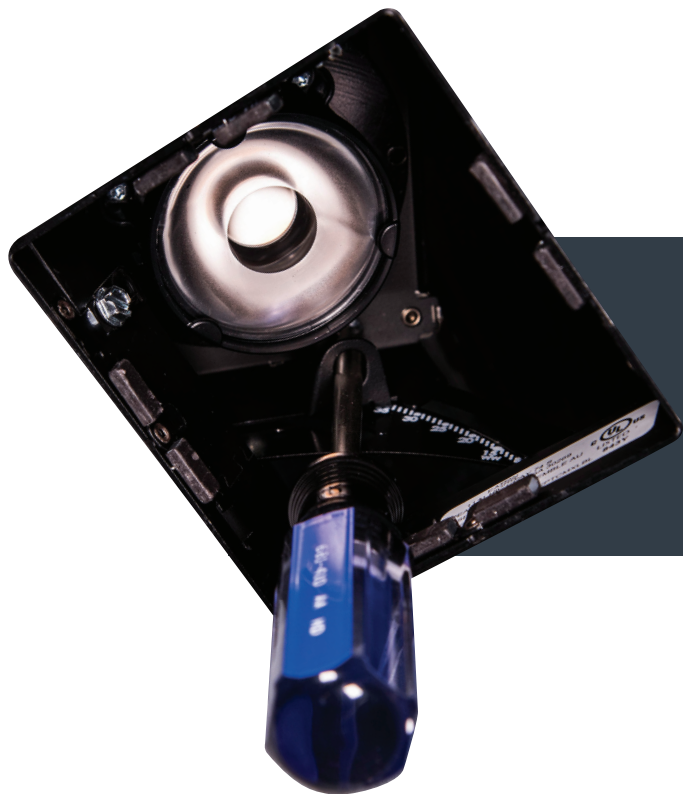
Whether a single accent fixture is installed in a new project to keep up with the homeowner's growing artwork collection or hundreds are used in the common areas of a hotel a unified design theme across all trim types and finishes creates a visually seamless installation allowing the architecture or other features to be the primary focus.



Trim installation

Each Halo HL3 housing is fitted with (8) rare earth Neodymium magnets that securely hold the trim in place. This allows for subtle repositioning to align apertures.





Aim and focus

The housings have a built-in adjustment mechanism that will rotate 365°, tilt 45° and locks in position maintaining any aiming angle - all above the ceiling. Angle markings assist in repeatable settings. The primary optics are field interchangeable and are available in spot, narrow flood, flood and wide flood distribution patterns.



TIR45SP15
Spot, 15°



TIR45NFL25
Narrow Flood, 25°



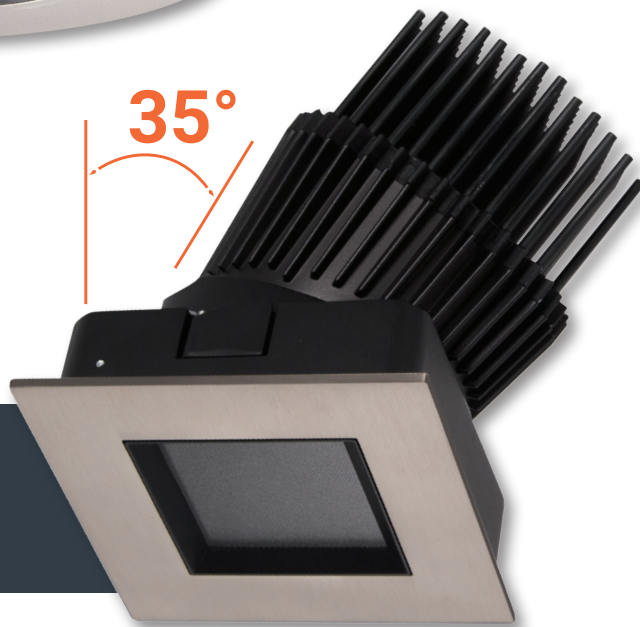
TIR45FL40
Flood, 40°



TIR45WFL55
Wide Flood, 55°

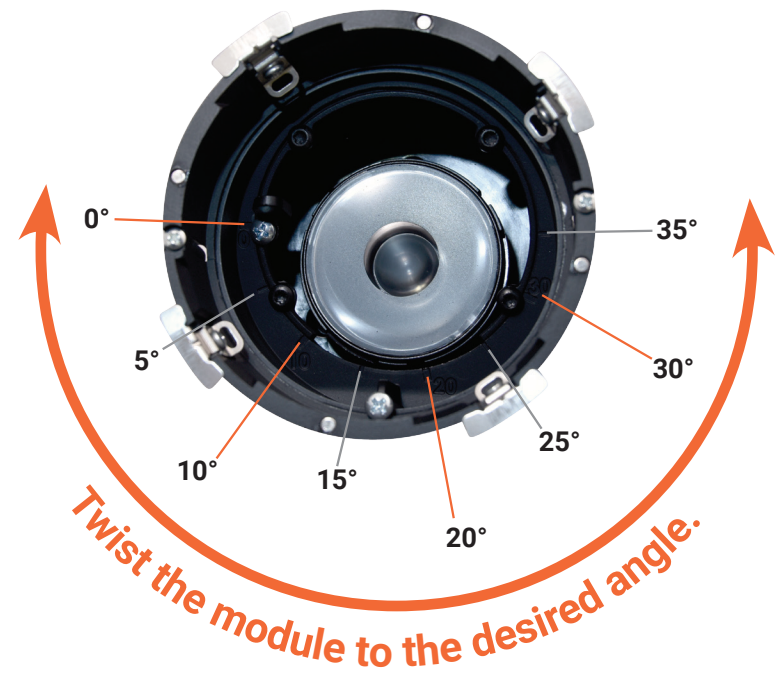


HL3 3-Inch Remodeler modules



Rotation and Tilt

The adjustment mechanism rotates 360°, tilts 35° and locks into position. Angle markings assist in repeatable settings.

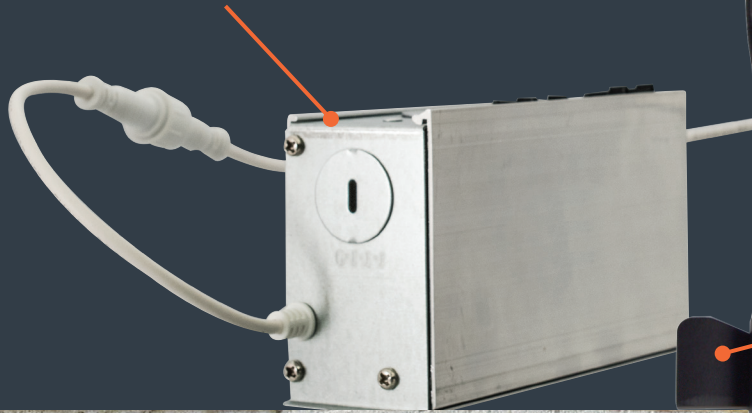


No housing required

fast and easy installation

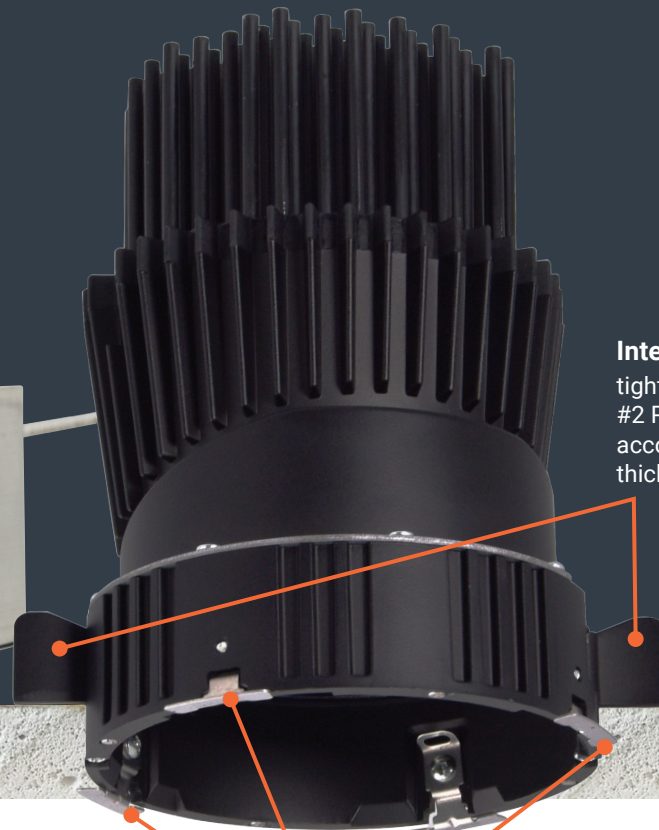
Driver/Junction Box

Wire below the ceiling, insert through hole in ceiling and mount using the available mounting holes.



Integral mounting clamps

tighten from below using a #2 Philips screwdriver and accommodate 1/2" to 1-1/4" thick ceilings.



- Module installs from below with the adjustment mechanism aimed at nadir and allows housing to be articulated
- Module can be removed for service or splice inspection
- Extension cables are available in varying lengths which allow for the driver/junction box to be mounted up to 20' away from the module. (Sold separately as an accessory.)

Trim Installation

(8) rare earth Neodymium magnets attached to the trim hold the trim securely to the module.



Twist the module to the desired angle.



Round New Construction and Remodel

Directional open

Pinhole w/oculus



TL3PINMWBB



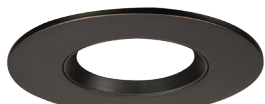
TL3PINMWBB



TL3PINMBBB



TL3PINBNBB



TL3PINORBBB

Conical reflector



TL3RMW



TL3RMB



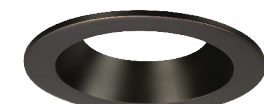
TL3RH



TL3RHWf



TL3RBN



TL3RORB

Conical baffle



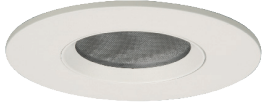
TL3RWBWF



TL3RBBWF

Directional lens

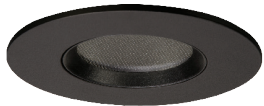
Pinhole w/oculus, lens



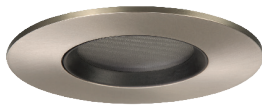
TL3PIN2GMWWB



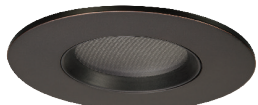
TL3PIN2GMWBB



TL3PIN2GMBBB



TL3PIN2GBNBB

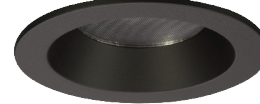


TL3PIN2GORBBB

Conical reflector, lens



TL3R2GMW



TL3R2GMB



TL3R2GH



TL3R2GHWF



TL3R2GBN



TL3R2GORB

Conical baffle, lens



TL3R2GWBWF



TL3R2GBBWF

Wall wash



TL3LWW6GMW

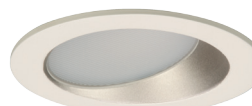


TL3LWW6GH

Conical polymer reflector, lens



TL3PR2GMW



TL3LWW6GHWF



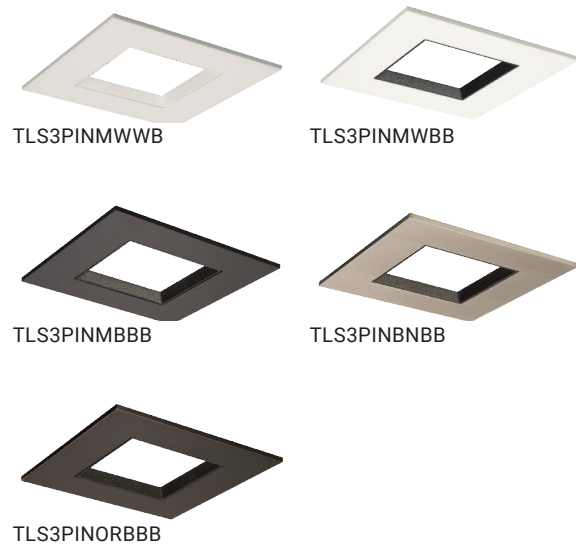


Square

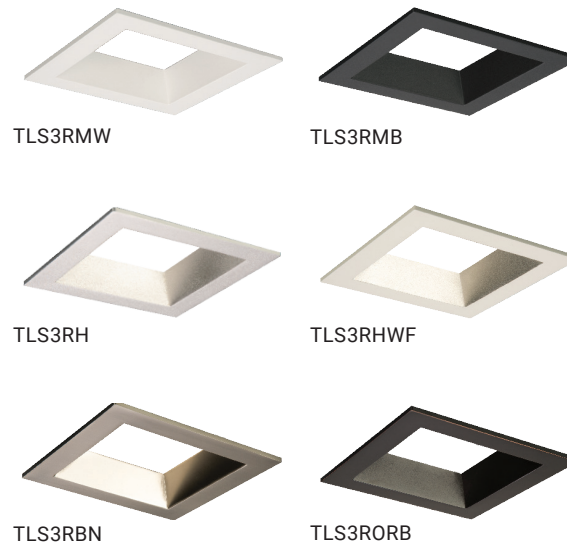
New Construction and Remodel

Directional open

Pinhole w/oculus



Conical reflector

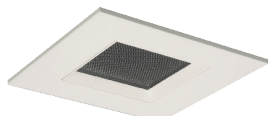


Conical baffle

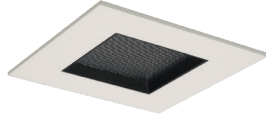


Directional lens

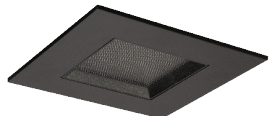
Pinhole w/oculus, lens



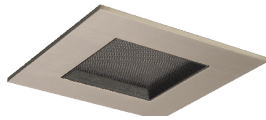
TLS3PIN2GMWWB



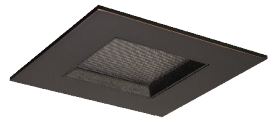
TLS3PIN2GMWBB



TLS3PIN2GMBBB

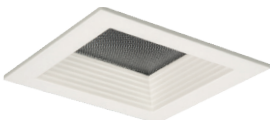


TLS3PIN2GBNBB

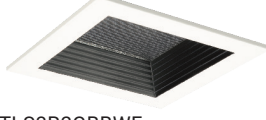


TLS3PIN2GORBBB

Conical baffle, lens

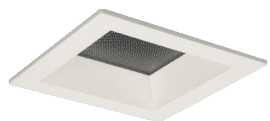


TLS3R2GWBWF



TLS3R2GBBWF

Conical polymer reflector, lens

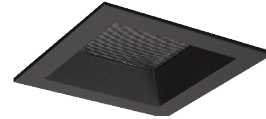


TLS3PR2GMW

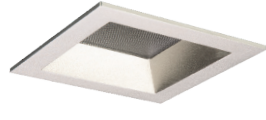
Conical reflector, lens



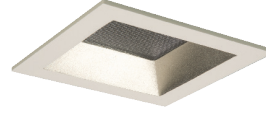
TLS3R2GMW



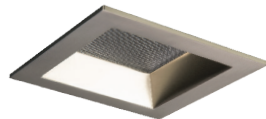
TLS3R2GMB



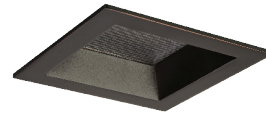
TLS3R2GH



TLS3R2GHWF



TLS3R2GBN

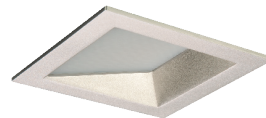


TLS3R2GORB

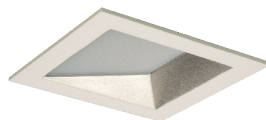
Wall wash



TLS3LWW6GMW



TLS3LWW6GH



TLS3LWW6GHWF





- Round and square housings can be converted to rimless using the rimless adapter in the field
- True knife-edge interface with the trim provides a 'quiet ceiling' appearance
- Lensed rimless trims have hinges on media to allow removal without tools for service or adjustment
- Only compatible with the HL3 new construction housings

Rimless

New Construction



Directional open

Pinhole



TL32GRMWRL

Reflector



TL3RMWRL

Directional lens

Pinhole, lens



TL3PIN2GMWWBRL

Reflector, lens



TL3PINMWBB

Wall wash



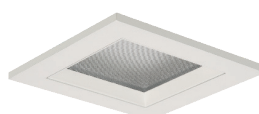
TL3LWW6GMWRL



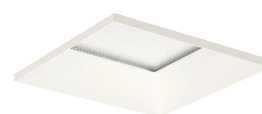
TLS32GRMWRL



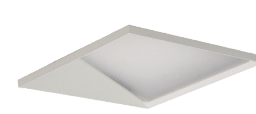
TLS3RMWRL



TLS3PIN2GMWWBRL



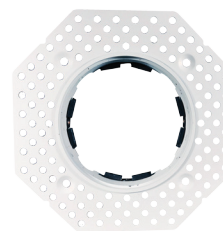
TLS3PINMWBB



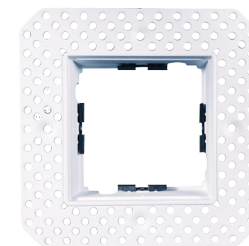
TLS3LWW6GMWRL

Rimless adapter

The rimless adapter replaces the standard collar and adjusts to level with the finished ceiling. The perforated pattern and tapered flange facilitates blending with the ceiling surface.

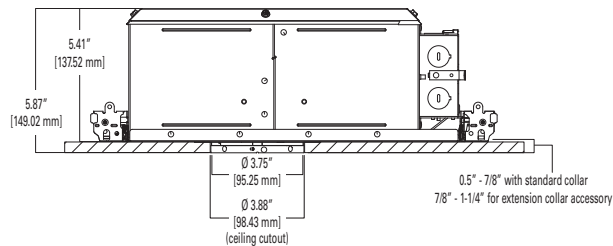
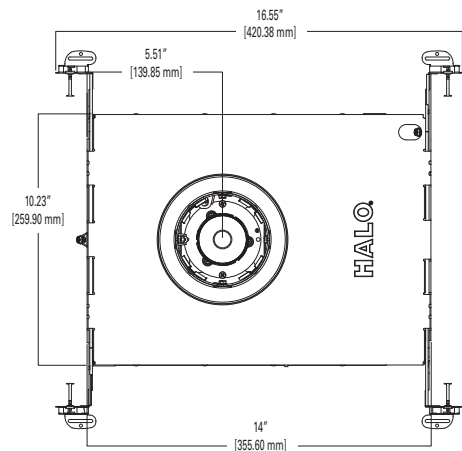


RA3R



RA3S

Rimless Adapter is only compatible with the HL3 new construction housings.



Note: For use in shallow ceilings with 2" x 6" joist construction.

Ordering Information

SAMPLE ORDER NUMBERS: HL36SA20SP927ED010ICAT, TIR45FL40, TL3RMW

Series

HL36A = 3-inch round shallow new construction directional housing

Wattage

- 10 = 10W (nominal)
- 15 = 15W (nominal)
- 20 = 20W (nominal)

Distribution

- [blank] = Purchase optic separately
- SP = 15° beam
- NFL = 25° beam
- FL = 40° beam
- WFL = 55° beam

Light Engine

- 927 = 90 CRI, 2700K
- 930 = 90 CRI, 3000K
- 935 = 90 CRI, 3500K
- 940 = 90 CRI, 4000K
- D2W = 90 CRI, 3000K CCT, dim to warm⁽¹⁾

Input/Control

- ED010 = UNV 120-277V, 50/60Hz leading or trailing edge phase cut 1% dimming at 120V only and UNV 120-277V 50/60Hz 0-10V 1% dimming
- 1ELTE = Lutron® Hi-Lume Forward Phase Dimming, 1% to 100%, 120V Only
- DE010 = 0-10V Dimming, 0% to 100%, 120V-277V

Housing Type

ICAT= insulation contact and airtight

Accessories

- RA3R = rimless adapter for HL36A housings and trims
- CE3R = collar extender for HL36A housings, adjusts from 7/8" to 1-1/4" thick ceilings

Optics & Media

- TIR45SP15 = 15° beam
- TIR45NFL25 = 25° beam
- TIR45FL40 = 40° beam
- TIR45WFL55 = 55° beam
- TIR45MH12PK = replacement media holder, package of 12
- L100 Series = 2.0" lens and filters, see spec sheet

Oversized Trim Ring

OTL3MW = oversized trim ring for TL3 trims

See page 18 for trim information.

(1) Only available in 10W and 15W

SAMPLE ORDER NUMBERS: HL36SA20SP927ED010ICAT, TIR45FL40, TLS3RMW

Series

HL36SA = 3-inch square shallow new construction directional housing

Wattage

10 = 10W (nominal)

15 = 15W (nominal)

20 = 20W (nominal)

Distribution

[blank] = Purchase optic separately

SP = 15° beam

NFL = 25° beam

FL = 40° beam

WFL = 55° beam

Light Engine

927 = 90 CRI, 2700K

930 = 90 CRI, 3000K

935 = 90 CRI, 3500K

940 = 90 CRI, 4000K

D2W = 90 CRI, 3000K CCT, dim to warm⁽¹⁾

Input/Control

ED010 = UNV 120-277V, 50/60Hz leading or trailing edge phase cut 1% dimming at 120V only and UNV 120-277V 50/60Hz 0-10V 1% dimming

1ELTE = Lutron® Hi-Lume Forward Phase Dimming, 1% to 100%, 120V Only

DE010 = 0-10V Dimming, 0% to 100%, 120V-277V

Housing Type

ICAT= insulation contact and airtight

Accessories

RA3S = rimless adapter for HL36A housings and trims

CE3S = collar extender for HL36A housings, adjusts from 7/8" to 1-1/4" thick ceilings

Optics & Media

TIR45SP15 = 15° beam

TIR45NFL25 = 25° beam

TIR45FL40 = 40° beam

TIR45WFL55 = 55° beam

TIR45MH12PK = replacement media holder, package of 12

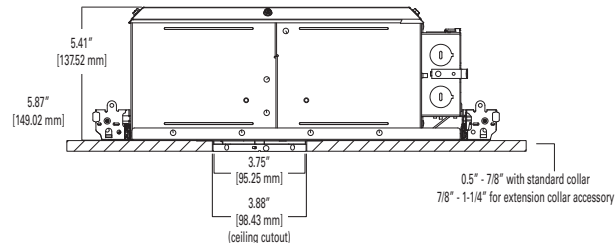
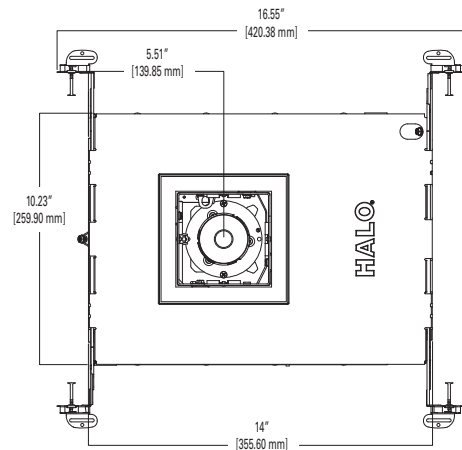
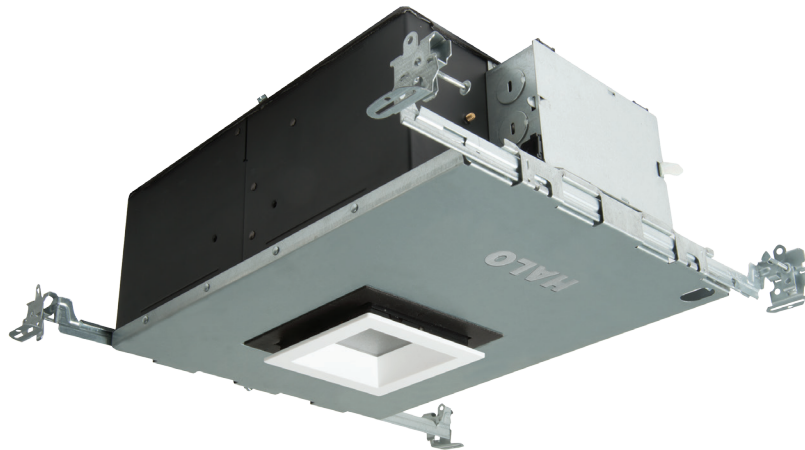
L100 Series = 2.0" lens and filters, see spec sheet

Oversized Trim Ring

OTL3MW = oversized trim ring for TL3 trims

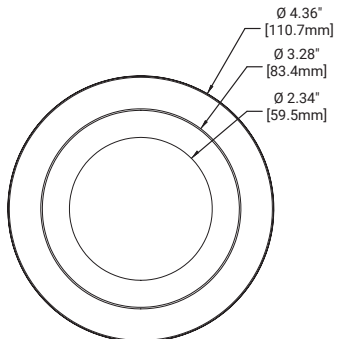
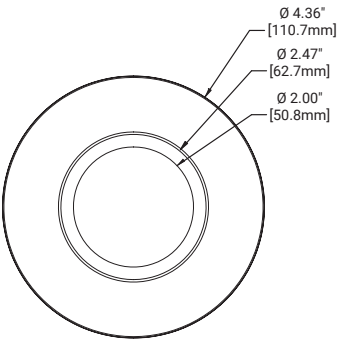
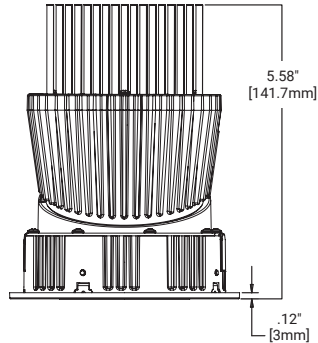
See page 19 for trim information.

(1) Only available in 10W and 15W



Note: For use in shallow ceilings with 2" x 6" joist construction.

HL36AR



Ordering Information

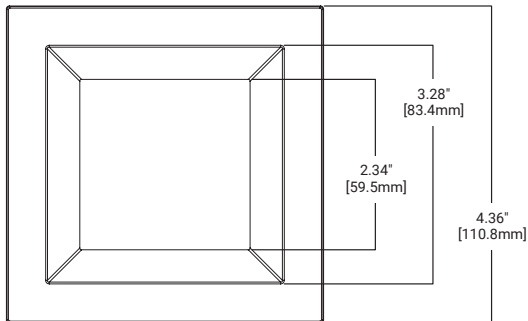
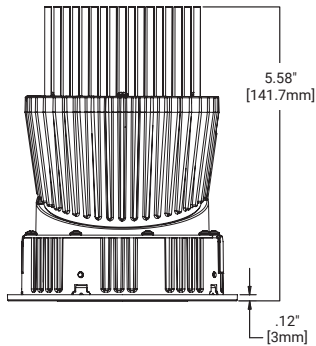
SAMPLE ORDER NUMBERS: HL36AR20930ED010TAT, TIR45FL40, TL3RMW

Series HL36AR = 3-inch round shallow directional remodeler housing
Wattage 13 = 13W ⁽¹⁾ 20 = 20W ⁽²⁾
Distribution [blank] = Purchase optic separately SP = 15° beam NFL = 25° beam FL = 40° beam WFL = 55° beam
Light Engine 927 = 90 CRI, 2700K CCT 930 = 90 CRI, 3000K CCT 935 = 90 CRI, 3500K CCT 940 = 90 CRI, 4000K CCT D2W = 90 CRI, 3000K CCT, dim to warm ⁽³⁾
Input/Control ED010 = UNV 120-277V 50/60Hz leading or trailing edge phase cut 1% dimming at 120V only and UNV 120-277V 50/60Hz 0-10V 1% dimming
Housing Type ICAT = insulation contact and airtight TAT = thermally protected and airtight ⁽³⁾
Accessories Optics & Media TIR45SP15 = 15° beam TIR45NFL25 = 25° beam TIR45FL40 = 40° beam TIR45WFL55 = 55° beam TIR45MH12PK = replacement media holder, package of 12 L100 Series = 2.0" lens and filters, see spec sheet Oversized Trim Ring OTL3MW = oversized round trim ring for TL3 trims Extension Cable SeleCC Table Driver/Jbox HLB06FSEC - 6 ft. extension cable HLB12FSEC - 12 ft. extension cable HLB20FSEC - 20 ft. extension cable

See page 18 for trim information.

(1) Only available with ICAT housing type.
(2) Only available with TAT housing type.
(3) Only available in 13W.

HL36SAR



Ordering Information

SAMPLE ORDER NUMBERS: HL36SAR20930ED010TAT, TIR45FL40, TLS3RMW

Series

HL36SAR = 3-inch square shallow directional remodeler housing

Wattage

13 = 13W ⁽¹⁾

20 = 20W ⁽²⁾

Distribution

[blank] = Purchase optic separately

SP = 15° beam

NFL = 25° beam

FL = 40° beam

WFL = 55° beam

Light Engine

927 = 90 CRI, 2700K CCT

930 = 90 CRI, 3000K CCT

935 = 90 CRI, 3500K CCT

940 = 90 CRI, 4000K CCT

D2W = 90 CRI, 3000K CCT, dim to warm ⁽³⁾

Input/Control

ED010 = UNV 120-277V 50/60Hz leading or trailing edge phase cut 1% dimming at 120V only and UNV 120-277V 50/60Hz 0-10V 1% dimming

Housing Type

ICAT = insulation contact and airtight

TAT = thermally protected and airtight ⁽³⁾

Accessories

Optics & Media

TIR45SP15 = 15° beam

TIR45NFL25 = 25° beam

TIR45FL40 = 40° beam

TIR45WFL55 = 55° beam

TIR45MH12PK = replacement media holder, package of 12

L100 Series = 2.0" lens and filters, see spec sheet

Oversized Trim Ring

OTLS3MW = oversized square trim ring for TLS3 trims

Extension Cable | SeleCC Table Driver/Jbox

HLB06FSEC - 6 ft. extension cable

HLB12FSEC - 12 ft. extension cable

HLB20FSEC - 20 ft. extension cable

See page 19 for trim information.

(1) Only available with ICAT housing type.

(2) Only available with TAT housing type.

(3) Only available in 13W.

HL3 Series Trims

Trim TL3R = 3.25" aperture conical reflector	Shielding [blank] = open 2G = micro-prismatic lens	Finishes H = semi-specular clear reflector and flange HWF = semi-specular clear reflector and matte white flange <u>Electroplated Finishes</u> BN = brushed nickel reflector and flange ORB = oil rubbed bronze reflector and flange <u>Painted Finishes</u> MW = matte white reflector and flange MB = matte black reflector and flange BBWF = matte black baffle, matte white flange WBWF = matte white baffle, matte white flange	Flange [blank] = full overlap self-flanged
TL3PR = 3.25" aperture conical polymer reflector, lens, self-flanged	2G = micro-prismatic lens	<u>Painted Finishes</u> MW = matte white reflector and flange	RL = rimless, must be used with rimless adapter ordered separately
Trim TL3LWW = 3.25" aperture conical lens wall wash	Shielding 6G = linear spread lens	Finishes H = semi-specular clear reflector and flange HWF = semi-specular clear reflector and matte white flange <u>Painted Finishes</u> MW = matte white reflector and flange	Flange [blank] = full overlap self-flanged
		<u>Painted Finishes</u> MW = matte white reflector and flange	RL = rimless, must be used with rimless adapter ordered separately
Trim TL3PIN = 2.00" aperture pinhole	Shielding [blank] = open 2G = micro-prismatic lens	Finishes BNBB = brushed nickel flange, black oculus ORBBB = oil rubbed bronze flange, black oculus <u>Painted Finishes</u> MWWB = matte white flange, white oculus MWBB = matte white flange, black oculus MBBB = matte black flange, black oculus	Flange [blank] = full overlap self-flanged
		<u>Painted Finishes</u> MWWB = matte white flange, white oculus	RL = rimless, must be used with rimless adapter ordered separately

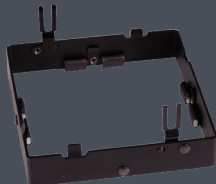
Accessories

Collar extender

Housing collars adjust vertically for 1/2" to 7/8" thick ceilings. Adding the collar extender allows the housings to work within a 7/8" to 1-1/4" ceiling thickness. Only compatible with the HL3 new construction housings.



CE3R



CE3S

Oversized trim ring

Housing collars adjust vertically for 1/2" to 7/8" thick ceilings. Adding the collar extender allows the housings to work within a 7/8" to 1-1/4" ceiling thickness.



OTL3MW



OTLS3MW

Extension Cables

Allows driver to be mounted remotely from fixture. Available in 6', 12' and 20' lengths. Only compatible with the HL3 Remodel module.



- HLB06FSEC - 6 ft. extension cable
- HLB12FSEC - 12 ft. extension cable
- HLB20FSEC - 20 ft. extension cable

Trim TLS3R = 3.25" square aperture conical reflector	Shielding [blank] = open 2G = micro-prismatic lens	Finishes H = semi-specular clear reflector and flange HWF = semi-specular clear reflector and matte white flange <u>Electroplated Finishes</u> BN = brushed nickel reflector and flange ORB = oil rubbed bronze reflector and flange <u>Painted Finishes</u> MW = matte white reflector and flange MB = matte black reflector and flange BBWF = matte black baffle, matte white flange WBWF = matte white baffle, matte white flange	Flange [blank] = full overlap self-flanged
TLS3PR = 3.25" aperture conical polymer reflector, lens, self-flanged	2G = micro-prismatic lens	<u>Painted Finishes</u> MW = matte white reflector and flange	RL = rimless, must be used with rimless adapter ordered separately [blank] = full overlap self-flanged
Trim TLS3LWW = 3.25" square aperture conical lens wall wash	Shielding 6G = linear spread lens	Finishes H = semi-specular clear reflector and flange HWF = semi-specular clear reflector and matte white flange <u>Painted Finishes</u> MW = matte white reflector and flange	Flange [blank] = full overlap self-flanged
TLS3PIN = 2.00" square aperture pinhole	Shielding [blank] = open 2G = micro-prismatic lens	Finishes BNBB = brushed nickel flange, black oculus ORBBB = oil rubbed bronze flange, black oculus <u>Painted Finishes</u> MWWB = matte white flange, white oculus MWBB = matte white flange, black oculus MBBB = matte black flange, black oculus	Flange [blank] = full overlap self-flanged
		<u>Painted Finishes</u> MWWB = matte white flange, white oculus	RL = rimless, must be used with rimless adapter ordered separately

Optics

Primary optics are field interchangeable and are available in Spot (SP), Narrow Flood (NFL), Flood (FL) and Wide Flood (WFL) distribution patterns.



TIR45SP15
Spot, 15°



TIR45NFL25
Narrow Flood, 25°



TIR45FL40
Flood, 40°



TIR45WFL55
Wide Flood, 55°



TIR45MH12PK

The integral lens holder accepts up to (2) 2" diameter, 3.0 mm thick color filters or lens.



Lighting Product Lines

Ametrix
AtLite
Corelite
Ephesus
Fail-Safe
HALO
HALO Commercial
Invue
io
IRiS
Lumark
Lumière
McGraw-Edison
Metalux
MWS
Neo-Ray
Portfolio
RSA
Shaper
Streetworks
Sure-Lites

Controls Product Lines

Fifth Light Technology
Greengate
iLight (International Only)
iLumin
Zero 88

Connected Lighting Systems

Distributed Low-Voltage Power
HALO Home
iLumin Plus
LumaWatt Pro
WaveLinx



Cooper Lighting Solutions
1121 Highway 74 South
Peachtree City, GA 30269
P: 770-486-4800
www.cooperlighting.com

Canada Sales
5925 McLaughlin Road
Mississauga, Ontario L5R 1B8
P: 905-501-3000
F: 905-501-3172

© 2020 Cooper Lighting Solutions
All Rights Reserved
Printed in USA
Publication No. BR518096EN
July 16, 2020 4:22 PM

All other trademarks are property
of their respective owners.

Product availability, specifications,
and compliances are subject to
change without notice.