

Project		Catalog #		Type	
Prepared by		Notes		Date	



Fail-Safe

HVSL8 | HVSL12 | HVSL8/B

Vandal Resistant / High Abuse
Steel Housing
Polycarbonate Lens

Typical Applications

Stairwells • Schools • Gymnasium • Hospitals • Corridors • Dormitories • Public restrooms • Common areas • Transit stations • Behavioral health facilities

Interactive Menu

- Order Information [page 2](#)
- Product Specifications [page 2](#)
- Nominal Input Watts/Delivered Lumens [page 3](#)
- Product Warranty

Product Certification



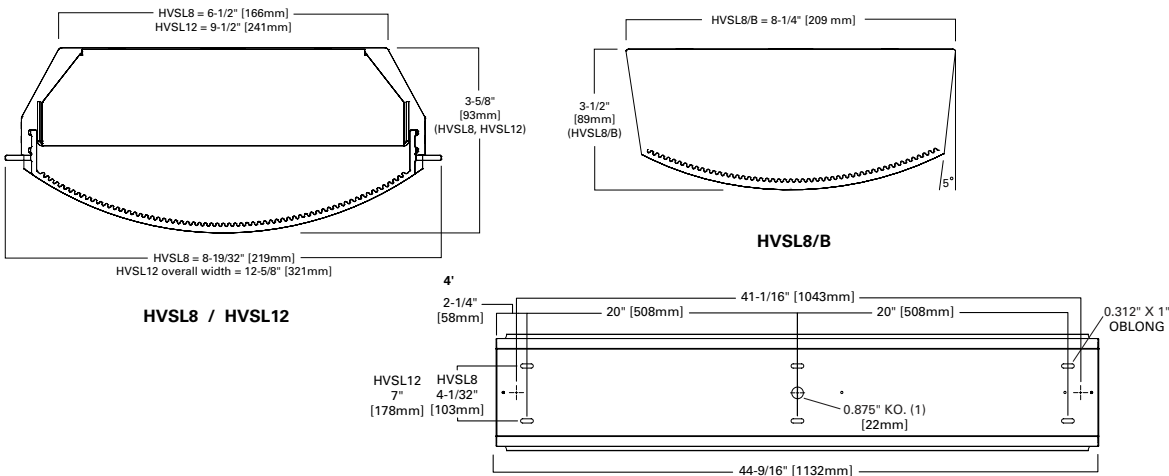
Product Features



Top Product Features

- Opal or clear high impact polycarbonate lens
- 8" and 12" width
- 2', 4', and 8' lengths
- Continuous row utilizing end KOs
- Integral occupancy sensor or external occupancy sensor
- Options to meet Buy American Act requirements
- 10-Day Quick Spec available

Dimensional and Mounting Details



(8' unit consists of (2) 4' units, attached at the factory)

Order Information

SAMPLE NUMBER: **HVSL8-4-LD4-2STD-40-UNV-C-EDC1**SAMPLE NUMBER: **HVSL8/B-2-LD4-2LO-35-UNV-C-EDD1**10-DAY QUICK SPEC SAMPLE NUMBER: **QS-HVSL8-4-LD4-3STD-40-UNV-O-EDC1**

Gray bar denotes available with 10-Day Quick Spec

Domestic Preferences ⁽¹⁾	Product Family	Length	LED Type	Number of LED Modules	Illumination Level	Color Temperature	Voltage	Lens Type	Driver
[Blank] =Standard BAA =Buy American Act	HVSL8 =8" Wide HVSL Linear Steel 2', 4' & 8' Lengths QS-HVSL8 =8" Wide HVSL Linear Steel 2', 4' & 8' Lengths, Quick Spec ⁽¹³⁾ HVSL8/B =8" Wide Behavioral Health, 2', 4' & 8' Lengths HVSL12 =12" Wide HVSL Linear Steel 2', 4' & 8' Lengths	2 =2' Length 4 =4' Length 8 =8' Length ⁽²⁾	LD4 =LED, Version 4.0	1 =(1) LED Module in Cross Section 2 =(2) LED Modules in Cross Section 3 =(3) LED Modules in Cross Section	LO =Low STD =Standard HI =High ⁽³⁾	30 =3000K Kelvin 35 =3500K Kelvin 40 =4000K Kelvin 50 =5000K Kelvin	UNV =120V-277V ⁽⁴⁾	O =Opal Polycarbonate (ribbed inside) C =Clear Polycarbonate (ribbed inside)	EDC =Electronic Driver, Non-Dimming ⁽⁵⁾ EDD =Electronic Driver, 0-10V Dimming, 10% ⁽⁵⁾ ED1D =Electronic Driver, 0-10V Dimming, 1% ⁽⁵⁾
Notes (1) Only product configurations with this designated prefix are built to be compliant with the Buy American Act of 1933 (BAA). Please refer to DOMESTIC PREFERENCES website for more information. Components shipped separately may be separately analyzed under domestic preference requirements.	Notes (13) 10 day ship, from date of receipt of clean PO to ship date. 25 unit maximum per PO. QS option only available with shaded options. EL14W with QS is only available in 4ft length, 2STD or 2HL.	Notes (2) 8 ft. unit consists of (2) 4 ft. housings joined together at the factory with single 8 ft. lens.			Notes (3) HVSL8 & HVSL8/B 3HI option not available with emergency battery pack.		Notes (4) Sensor options are voltage specific, 120 or 277.		Notes (5) Purple and gray low voltage driver leads connected to driver for EDD1, ED1D1, EDD2, ED1D2, EDD3, ED1D3. Not connected for EDC1, EDC2, EDC3.

No. of Circuits	Options	Finish	Accessories (Order Separately) ⁽¹²⁾
1 =1 Circuit 2 =2 Circuits 3 =3 Circuits	OS1 =Integrated Motion/Occupancy Sensor (within lens) connected to 1 LED module ^{(6),(9)} OS2 =Integrated Motion/Occupancy Sensor (within lens) connected to 2 LED modules ^{(6),(9)} OSE1 =Occupancy Sensor Mounted in End External Box, Connected to One LED Module (box attached to end plate) (FS305) ^{(6),(8)} OSE2 =Occupancy Sensor Mounted in End External Box, Connected to Two LED Modules (box attached to end plate) (FS305) ^{(6),(8)} OSES1 =Occupancy Sensor Mounted in Side External Box, Connected to One LED Module (FS505) ^{(6),(8)} OSES2 =Occupancy Sensor Mounted in Side External Box, Connected to Two LED Modules (FS505) ^{(6),(8)} EL7W =7W EM Battery Pack ⁽⁷⁾ EL10W =10W EM Battery Pack ⁽⁷⁾ EL14W =14W EM Battery Pack ^{(7),(13)} ETRD =Iota Emergency Transfer Relay with dimming control ⁽¹¹⁾ SF1 =TORX® T20 Center Pin, Tamper Proof Screws ⁽¹⁴⁾ SF3 =Allen-Head Center Pin, Tamper Proof Screws ⁽¹⁴⁾ SHP =Stainless Steel Painted Housing SHPA =Stainless Steel Painted, all Fabricated Components ALH =Aluminum Painted Housing ALHA =Aluminum Painted, all Fabricated Components IP63 =IP63 Compliant ⁽¹⁰⁾	Blank =Matte White BK =Black DP =Dark Platinum BZ =Bronze Custom colors available, with customer provided RAL number. Consult Technical Support for proper catalog logic.	VRSD =T20 Center Pin Tamper Proof TORX®-head bit
	Notes (6) Sensor options are voltage specific, 120 or 277. (7) HVSL8 & HVSL8/B 3HI option not available with emergency battery pack. (8) External occupancy sensor is damp location listed only. (9) The FM105 occupancy sensor operates at 5.8GHz which may interfere with wireless network signals if they are operating on that same frequency. (10) IP63 not available on HVSL8/B. (11) Used to bypass local control during outage. Must be used in conjunction with UL 1008 device (provided by others). Devices are universal voltage (UNV). 347 not available. (14) SF1 and SF3 are options for the HVSL8; The HVSL8/B is standard with TORX® T25 center pin tamper screws only. HVSL8/B not available with the SF1 or SF3 screw options.		Notes (12) Accessories sold separately will be separately analyzed under domestic preference requirements. Consult factory for further information.

Product Specifications

Housing

- Heavy duty, 18 ga. steel housing and end caps. Stainless-steel and die-formed aluminum available
- End caps with 7/8" KO for continuous row mounting
- Pendant mount standard with (2) 7/8"KOs in the housing back (all lengths except 1' and 2'). Stem sets ordered separately as accessory item
- Finished in matte white paint standard. Optional architectural colors available

Fasteners

- HVSL: (4) Hex-head screws secure the lens to the housing is standard. Optional: (SF1) stainless steel TORX®T20 center pin and (SF3) stainless steel allen head with center pin.
- HVSL/B: (10) Countersunk stainless steel TORX®T25 center pin tamper screws secure the lens to the housing.

Lens

- One-piece extruded UV stabilized, opal polycarbonate is standard.
- Optional clear ribbed polycarbonate
- Unique linear ribbed design provides even light distribution while obscuring lamp image and direct glare
- Internal ribs and smooth exterior reduce dirt build-up and facilitates cleaning
- Nominal lens thickness = 0.135"

Reflector

- 20 ga. CRS with white high reflectance polyester powder coat finish
- Reflector serves as driver and wireway cover

Light-Emitting Diode (LED)

- LEDs available in 3000K, 3500K, 4000K and 5000K with minimum 80 CRI.

Transformer/Driver

- Electronic driver. 0-10V dimming standard

Compliance

- UL listed for damp locations, wall or ceiling mount
- Wet location under covered ceiling

Warranty

- Five-year warranty on LEDs and electrical
- Fail-Safe will repair or replace any vandal resistant / high abuse luminaire, that is deemed non-functional due to physical damage to the luminaire exterior housing or polycarbonate lens. The luminaire must be installed correctly, and the warranty does not include any interior component, nor does it include damage due to gunfire, paint, caustic material / chemicals, disastrous or abnormal events.

Nominal Input Watts/Delivered Lumens

[View IES files](#)

Fixture	Length	# Modules In Cross Section	Illumination Level	Nominal Input Watts	Clear Lens		Opal Lens	
					Nominal Delivered Lumens	LPW	Nominal Delivered Lumens	LPW
HVSL8 (4000K)	2	1	LO	11.5	1441	125.3	1305	113.5
		1	STD	16.3	1856	113.9	1681	103.1
		1	HI	21.5	2389	111.1	2163	100.6
		2	LO	23.1	2736	118.4	2478	107.3
		2	STD	32.7	3525	107.8	3192	97.6
		2	HI	43.1	4536	105.2	4107	95.3
		3	LO	33.7	4315	128	3907	115.9
		3	STD	47.8	5559	116.3	5033	105.3
		3	HI	63	7153	113.5	6477	102.8
	4	1	LO	23	2882	125.3	2609	113.4
		1	STD	32.6	3712	113.9	3361	103.1
		1	HI	43	4777	111.1	4325	100.6
		2	LO	46.1	5473	118.7	4955	107.5
		2	STD	65.4	7050	107.8	6383	97.6
		2	HI	86.1	9072	105.4	8214	95.4
		3	LO	67.4	8630	128	7815	115.9
		3	STD	95.5	11117	116.4	10066	105.4
		3	HI	125.9	14307	113.6	12954	102.9
HVSL12 (4000K)	2	2	LO	23.7	2857	120.5	2587	109.2
		2	STD	33.6	3680	109.5	3332	99.2
		2	HI	44.2	4736	107.1	4288	97
		3	LO	34.6	4505	130.2	4079	117.9
		3	STD	49.1	5804	118.2	5255	107
		3	HI	64.7	7468	115.4	6762	104.5
	4	2	LO	47.4	5714	120.5	5174	109.2
		2	STD	67.1	7360	109.7	6664	99.3
		2	HI	88.5	9472	107	8576	96.9
		3	LO	69.2	9011	130.2	8159	117.9
		3	STD	98.1	11607	118.3	10510	107.1
		3	HI	129.3	14937	115.5	13525	104.6

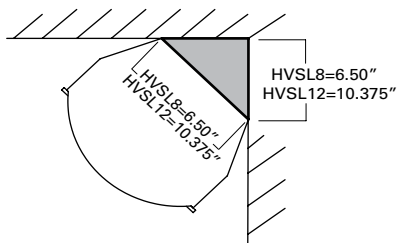
• Nominal input wattage values include LED voltage, drive currents and typical driver efficiency. Refer to LM 79 data/photometric files for exact delivered lumen values and input wattage. Values in table are nominal values only.

• Nominal 15% reduction in delivered lumens when using opal lens.

• For 8' fixture delivered lumens, multiply 4' unit by a factor of 2.

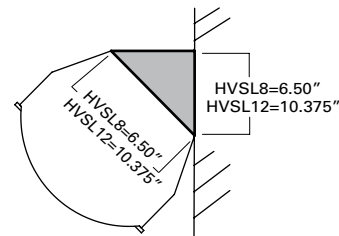
HVSL8 & HVSL12 Corner Mount Bracket (Accessory)

HVSL8-X-CM/BKT= 8", specify length, (X=1, 2, 3, 4, 8)
HVSL12-X-CM/BKT = 12", specify length, (X=1, 2, 3, 4, 8)



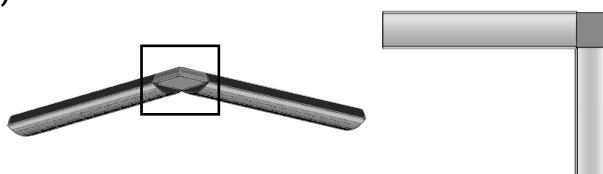
HVSL8 & HVSL12 Wall Mount Angle Bracket (Accessory)

HVSL8-X-WMAB45= 8", 45 degree, specify length, (X=1, 2, 3, 4, 8)
HVSL12-X-WMAB45 =12", 45 degree, specify length, (X=1, 2, 3, 4, 8)



HVSL8 & HVSL12 Corner Connector (Accessory)

HVSL8-CRNR/CONN=HVSL8 Corner Connector, 90 degree.
HVSL12-CRNR/CONN=HVSL12 Corner Connector, 90 degree.

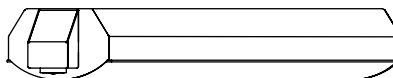


External Occupancy Sensor (Option)

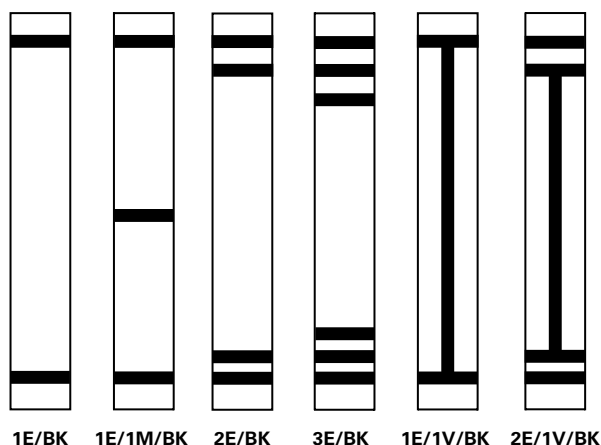
OSE=Occupancy Sensor mounted in external box, (box attached to fixture end plate).

OSSES=Occupancy Sensor mounted in external box on side of fixture (box attached to side of fixture).

* Internal occupancy sensor available behind lens, positioned at fixture end. Internal sensor adds 4" to the fixture length. (OS1,OS2).



Decorative Lens/Bands (Option)



Ordering Logic (Add to end of fixture catalog #)

Examples: HVSL8-4-LD4-1STD-40-UNV-O-EDC1-1E/BK
HVSL12-4-LD4-1STD-40-UNV-O-EDC1-1E/BK

No of Horizontal Band and Location	Vertical Band	Band Color
1E=1 Band on End 2E=2 Bands on End 3E=3 Bands on End 1M=1 Band in Middle 2M=2 Bands in Middle 3M=3 Bands in Middle	1V=1 Band Vertical	BK=Black BR=Bronze BL=Blue

No of Horizontal band and Location	Vertical Band	Band Color
1E=1 Band on End 2E=2 Bands on End 3E=3 Bands on End 1M=1 Band in Middle 2M=2 Bands in Middle 3M=3 Bands in Middle	1V=1 Band Vertical	BK=Black BR=Bronze BL=Blue

Notes:

- *Bands are 3/4" thick
- *Bands are high durability paint finish
- *For custom colors, please furnish RAL# or paint manufacturer/catalog number
- *For other variations or colors not shown, please issue PDR