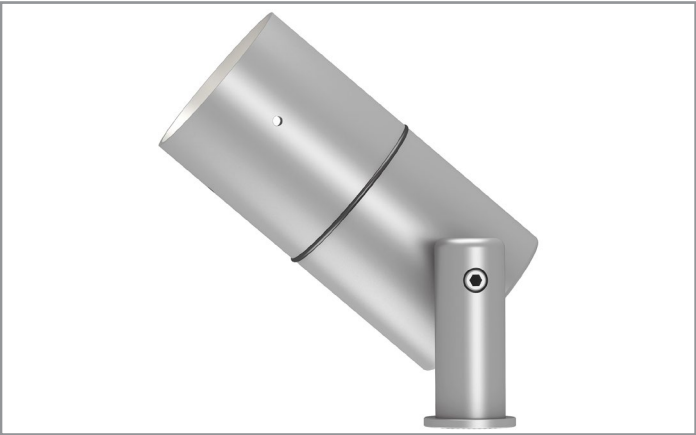


Project		Catalog #		Type	
Prepared by		Notes		Date	



# Lumière

## Cambria 203

LED / Halogen  
Accent / Flood

### Typical Applications

- Hospitality • Commerical Landscape • Outdoor Area/Site • Residential
- Architectural

### Interactive Menu

- Order Information page 2
- Cambria 203 MR16 Halogen Photometric Data page 3
- Cambria 203 LED Photometric Data page 4
- Product Warranty

### Product Certification



### Product Features

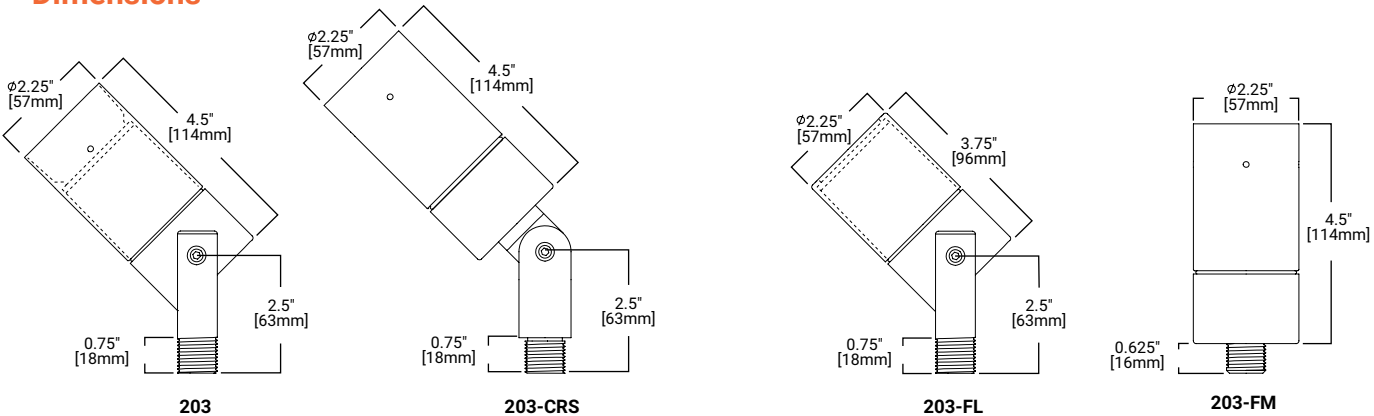


### Top Product Features

- 340° tilt, 360° rotation
- Precision-machined aluminum, brass, bronze, copper or stainless steel
- Stainless steel hardware
- Siphon Protection System (S.P.S.)
- Holds up to three optical accessories
- Three-year warranty

[View mounting accessories](#)

### Dimensions



Note: 1/2" NPS Thread

TECHNICAL DATA  
8W LED, L70/60,000 hours at 25°C  
Low Voltage: 50W Halogen MR16

## Order Information

SAMPLE ORDER NUMBER: 203-FL-50MR16-12-NSS

Domestic Preferences	Series	Construction	Source (for LED, select from each column and combine)		Voltage	Finish	
Domestic Preferences <sup>1</sup>	Series	Construction	Source (for LED, select from each column and combine)		Voltage	Finish <sup>2</sup>	
<b>[Blank]</b> =Standard <b>BAA</b> =Buy American Act	<b>203</b> =LED or MR16 Cambria Accent Fixture	<b>---</b> =Standard Side Swivel Stem <b>CRS</b> =Center Rear Swivel Stem <b>FM</b> =Rear Flush Mount <b>FL</b> =Flush Lens, Side Swivel Stem	<b>50MR16</b> =50W max. Halogen MR16 (lamp not included)		<b>12</b> =12V	<b>Painted</b> <b>BK</b> =Black <b>BZ</b> =Bronze <b>CS</b> =City Silver <b>VE</b> =Verde <b>WT</b> =White <b>RALXX</b> = Custom Color	
			<b>8LED</b> =8W LED lamp included	<b>27</b> =2700K <b>30</b> =3000K <b>40</b> =4000K*			<b>10</b> =10° Spot <b>25</b> =25° Narrow <b>36</b> =36° Wide
			<b>5LED</b> =5W LED lamp included	<b>AM</b> =Amber* (585-595nm)			<b>25</b> =25° Narrow
<b>Notes</b>  (1) Only product configurations with this designated prefix are built to be compliant with the Buy American Act of 1933 (BAA). Please refer to <a href="#">DOMESTIC PREFERENCES</a> website for more information. Components shipped separately may be separately analyzed under domestic preference requirements.	<b>Notes</b>	<b>Notes</b>	<b>Notes</b>  * Not Title 20 compliant.		<b>Notes</b>	<b>Notes</b>  (2) Consult factory for premium/natural metals material finish. Minimum order quantity of 5.	

## Optical Accessories - Order Separately

Filters (2.00" Diameter)	Optical Lenses (2.00" Diameter)	Optical Louvers (2.00" Diameter)
Filters (2.00" Diameter) <sup>3</sup>	Optical Lenses (2.00" Diameter) <sup>3</sup>	Optical Louvers (2.00" Diameter) <sup>3</sup>
<b>F71</b> =Peach Dichroic <b>F72</b> =Amber Dichroic <b>F73</b> =Green Dichroic <b>F74</b> =Medium Blue <b>F75</b> =Yellow Dichroic <b>F76</b> =Red Dichroic <b>F77</b> =Dark Blue Dichroic <b>F78</b> =Light Blue Dichroic <b>F79</b> =Neutral Density Dichroic <b>F80</b> =Magenta Dichroic <b>F22</b> =Red Color <b>F33</b> =Blue Color <b>F44</b> =Green Color <b>F55</b> =Yellow Color <b>F66</b> =Mercury Vapor	<b>LSL</b> =Linear Spread Lens (elongates standard beam spread) <b>DIF</b> =Diffused lens (provides even illumination) <b>OSL</b> =Overall Spread Lens (increases standard beam spread)	<b>LVR</b> =45° Hex Cell Louver (reduces glare)
<b>Notes</b> (3) Accessories sold separately will be separately analyzed under domestic preference requirements. Consult factory for further information.	<b>Notes</b>	<b>Notes</b>

## Mounting Accessories - Order Separately

Ground Mounting	Surface / Wall Mounting	Low Voltage Tree Mounting
Ground Mounting <sup>4</sup>	Surface / Wall Mounting -specify powder paint finish (BK,BZ,CS,VE,WT) <sup>4</sup>	Low Voltage Tree Mounting <sup>4,5</sup>
<b>GS01</b> =1-1/2" x 6-3/4" (38mm x 171mm) cast zinc ground spike <b>GS03</b> =2-3/8" x 6-5/8" (960mm x 168mm) aluminum ground spike with integral 12V wiring compartment. Specify powder paint finish (BK,BZ,CS,VE,WT) <b>GS04</b> =1" x 16-1/2" (25mm x 419mm) aluminum ground spike with integral 12V wiring compartment. Specify powder paint finish (BK,BZ,CS,VE,WT) <b>GS05</b> =1" x 16-1/2" (48mm x 438mm) black polycarbonate ground spike with 2"-13" height adjustment - requires fixture with extended stem. <b>GS08</b> =1-7/8" x 8" (48mm x 203mm) black ABS ground spike <b>GS13</b> =3-3/4" x 4-1/2" (95mm x 114mm) brass/stainless steel 3 prong ground spike	<b>FS1</b> =2-7/8" x 4-5/8" (73mm x 117mm) rectangular wall plate or box cover with single 1/2 NPS mounting hole <b>FS2</b> =2-7/8" x 4-5/8" (73mm x 117mm) rectangular wall plate or box cover with dual 1/2 NPS mounting holes <b>RS1</b> =4-1/2" (144mm) machined aluminum standard round wall plate with single 1/2 NPS mounting hole <b>RS2</b> =4-1/2" (114mm) machined aluminum standard round wall plate with single 1/2 NPS mounting hole <b>TM01</b> =2-3/16" x 1-1/2" (71mm x 38mm) round mount for installation on trees or other wood surfaces with 1/2 NPS mounting hole <b>TM05</b> =3-7/8" x 2" (98mm x 51mm) rectangular tree/surface mount with wiring compartment and single 1/2 NPS mounting hole	<b>TM04</b> =2-1/2" x 4-1/4" (64mm x 108mm) expanding tree strap with self adjusting tension release for one fixture mount. Designed for a maximum tree diameter of 24" (610mm) <b>TM04-2</b> =two fixture mount <b>TM04-3</b> =three fixture mount <b>TM04-4</b> =four fixture mount <b>TR07</b> =tree friendly ring with adjustable stand-offs. Accommodates 18"-24" (457mm - 610mm) tree diameter <b>TR07-2</b> =two fixture mount <b>TR07-3</b> =three fixture mount <b>TR07-4</b> =four fixture mount <b>TR07-6</b> =six fixture mount
<b>Notes</b> (4) Accessories sold separately will be separately analyzed under domestic preference requirements. Consult factory for further information	<b>Notes</b>	<b>Notes</b> (5) Available in galvanized stainless steel finish only

## Product Specifications

### Material

- Housing, hood and mounting stem are precision-machined from corrosion-resistant billet stock 6061-T6 aluminum
- Contact factory about Natural Metals such as C360 brass, C932 bronze, C110 copper, and 303 / 304 stainless steel

### Finish

- Fixtures constructed from 6061-T6 aluminum are double protected by an ROHS\* compliant chemical film undercoating and polyester powdercoat paint finish, surpassing the rigorous demands of the outdoor environment
- A variety of standard colors are available. Custom colors available upon request: select "RALXX" option"; additional charges and lead time apply

### Brass, Bronze\*, Copper or Stainless Steel

- Fixtures constructed from brass, bronze\*, copper or stainless steel are left unpainted to reveal the natural beauty of the material
- Brass, bronze\* and copper will patina naturally over time

### Hood

- Hood is removable for easy relamping and accepts up to three internal accessories at once (lenses, louvers, filters) to achieve multiple lighting effects
- Model 203, 203-CRS & 203-FM: Weep holes prevent water and mineral stains from collecting on the lens
- Model 203-FL: The flush lens design minimizes debris collection and prevents water and mineral stains from collecting on the lens

### Gasket

- Housing and hood are sealed with a high temperature silicone o-ring gasket to prevent water intrusion

### Lens

- Tempered glass lens, factory sealed with high temperature adhesive to prevent water intrusion and breakage due to thermal shock

### Mounting Stem

- Model 203 and 203-FL include fully adjustable side-mounted swivel stem, providing 340° tilt and 360° rotation for easy aiming
- Center rear swivel (203-CRS) or stationary rear fixed mount (203-FM) models are also available
- All models include 1/2" NPS threaded male fitting
- Stainless steel aim-locking mechanisms are standard on adjustable models
- Lumière's exclusive Siphon Protection System (S.P.S.) prevents water from siphoning into the fixture through its own lead wires

### Hardware

- Stainless steel hardware is standard to provide maximum corrosion-resistance

### Socket

- Ceramic socket with 250° C Teflon® coated lead wires and GU5.3 bi-pin base.

### Electrical

- Remote 12V transformer required (not included)
- Initial power draw on LED equipped fixtures is 12 watts when sizing transformer use 12 watts per LED fixture
- Nominal power draw after start up is 8 watts
- LEDs are more voltage sensitive than standard halogen MR16 lamps
- The LED module is designed to operate within the range 12V +/- 1.2V. Any less or more voltage can cause premature failures

### Lamp

- Halogen lamp not included
- SORAA LED lamps are included when "8LED" or "5LED" options are selected
- LED options are available in 2700K, 3000K, and 4000K at 95CRI; in addition to Amber (585-595nm)
- Select from three beam angles: 10° Spot, 25° Narrow, and 36° Wide
- Both color temperature and distribution must be specified when ordering

### Compliance

- Tested to IESNA LM-79 and LM-80

### Shipping Data

- Approximate Net Weight: 1.08 lbs. (0.49 kgs.)
- Effective Projected Area: 9.8 in²

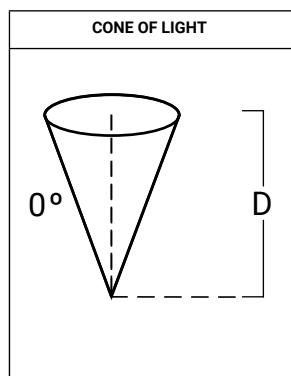
### Warranty

- Three year warranty standard.

\*For natural bronze ROHS material consult factory.

## Cambria 203 MR16 Halogen Photometric Data

### Horizontal Illuminance on Surface - Cambria 203 Standard Recessed Hood - 50W MR16



Filename	203-50MR16-12-BK-NSP.ies	
Lamp	50W MR16 NSP	
CBCP	11,000	
Distance	FC	Beam Diameter
2'	2550	1'6"
4'	638	1'0"
6'	283	1'6"
8'	159	2'0"
10'	102	3'0"
15'	45	4'0"

Filename	203-50MR16-12-BK-NFL.ies	
Lamp	50W MR16 NFL	
CBCP	3,200	
Distance	FC	Beam Diameter
2'	725	1'0"
4'	181	2'6"
6'	81	4'0"
8'	45	5'0"
10'	29	6'6"
15'	13	10'0"



### CCT MULTIPLIER TABLE

LAMP WATTAGE	MULTIPLIER
20W	0.32
35W	0.57

Filename	203-50MR16-12-BK-FL.ies	
Lamp	50W MR16 FL	
CBCP	2,000	
Distance	FC	Beam Diameter
2'	431	1'6"
4'	106	3'0"
6'	48	5'0"
8'	27	6'6"
10'	17	8'0"
15'	7	12'0"

Filename	203-50MR16-12-BK-WFL.ies	
Lamp	50W MR16 WFL	
CBCP	1,200	
Distance	FC	Beam Diameter
2'	269	2'0"
4'	67	4'6"
6'	30	7'6"
8'	17	9'0"
10'	11	11'6"
15'	5	17'0"

### NOTES AND FORMULAS

- Beam diameter is to 50% of maximum footcandles, rounded to the nearest half-foot.
- Footcandle values are initial. Apply appropriate light loss factors where necessary.
- Bare lamp data shown. Consult lamp manufacturers to obtain detailed specifications for their lamps.

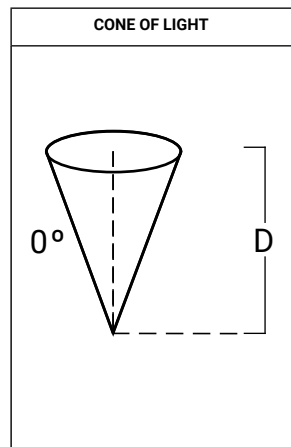
## Cambria 203 LED Photometric Data

LED Lumen and CBCP Table - 3000K

 View IES files

		Flush Hood			Regressed Hood (Black)			Regressed Hood (Silver)		
		CBCP	LUMENS	LPW	CBCP	LUMENS	LPW	CBCP	LUMENS	LPW
10	BASE	7758	456	57	7188	387	48.4	6554	385	51.4
	+DIFF	1278	372	46.5	1256	286	35.7	1206	303	40.3
	+LSL	1700	402	50.3	1685	328	41	1557	328	43.7
	+LVR	6837	315	39.9	6276	305	38.2	6010	292	38.9
	+OSL	1700	402	50.3	1685	328	41	1557	328	43.7
25	BASE	3454	536	68.7	3285	480	60.8	3026	465	63.6
	+DIFF	977	435	55.7	936	344	43.5	924	361	46.3
	+LSL	1021	482	61.8	999	406	51.4	923	401	54.1
	+LVR	1864	492	63.1	1815	443	56.1	1705	438	57.6
	+OSL	1864	492	63.1	1815	443	56.1	1705	438	57.6
36	BASE	1469	525	68.2	683	339	43.5	1444	474	60.8
	+DIFF	696	432	56.1	616	392	50.3	645	345	44.8
	+LSL	624	476	61.9	1279	324	41.5	622	408	53.6
	+LVR	1322	344	44.7	1197	434	56.3	1242	323	42.5
	+OSL	624	476	61.9	1279	324	41.5	622	408	53.6

## Horizontal Illuminance on Surface - Cambria 203 Standard Recessed Hood - 3000K



Filename: 203-SS-8LED3010-12-BK.ies			
Test No.: P349415			
Distance	FC	Beam Diameter	
2'	1797.1	0.4	
4'	449.3	0.8	
6'	199.7	1.2	
8'	112.3	1.6	
10'	71.9	2	
15'	31.9	3.2	
20'	18	4.2	
30'	8	6.4	
40'	4.5	8.4	

Filename: 203-SS-8LED3025-12-BK.ies			
Test No.: P349495			
Distance	FC	Beam Diameter	
2'	821.4	0.6	
4'	205.3	1.2	
6'	91.3	1.8	
8'	51.3	2.4	
10'	32.9	3	
15'	14.6	4.6	
20'	8.2	6	
30'	3.7	9.2	
40'	2.1	12.2	

Filename: 203-SS-8LED3036-12-BK.ies			
Test No.: P349480			
Distance	FC	Beam Diameter	
2'	361.1	1	
4'	90.3	2.2	
6'	40.1	3.4	
8'	22.6	4.6	
10'	14.4	5.8	
15'	6.4	8.6	
20'	3.6	11.6	
30'	1.6	17.4	
40'	0.9	23.2	

## CCT MULTIPLIER TABLE

CCT (K) / COLOR	MULTIPLIER
2700K	1.04
3000K	1.00
4000K	0.78

Note: Multiplier can be used to calculate center beam candle power (CBCP), Lumens and footcandle (FC) values.

## Horizontal Illuminance on Surface - Cambria 203 Flush Lens Hood - 3000K

Filename: 203-FL-8LED3010-12-BK.ies			
Test No.: P349420			
Distance	FC	Beam Diameter	
2'	1939.5	0.4	
4'	484.9	0.8	
6'	215.5	1.2	
8'	121.2	1.6	
10'	77.6	2	
15'	34.5	3	
20'	19.4	4.2	
30'	8.6	6.2	
40'	4.8	8.4	

Filename: 203-FL-8LED3025-12-BK.ies			
Test No.: P349500			
Distance	FC	Beam Diameter	
2'	863.4	0.6	
4'	215.9	1.2	
6'	95.9	1.8	
8'	54	2.4	
10'	34.5	3	
15'	15.3	4.6	
20'	8.6	6.2	
30'	3.8	9.2	
40'	2.2	12.4	

Filename: 203-FL-8LED3036-12-BK.ies			
Test No.: P349485			
Distance	FC	Beam Diameter	
2'	367.2	1	
4'	91.8	2.2	
6'	40.8	3.4	
8'	22.9	4.6	
10'	14.7	5.8	
15'	6.5	8.6	
20'	3.7	11.6	
30'	1.6	17.4	
40'	0.9	23.2	

## TECHNICAL INFORMATION

- Dimming is dependant on remote transformer compatibility with LED module. Please see compatibility for dimmer switch and transformer selection.
- When using a magnetic dimmer switch there are two recommended LED compatible 120V magnetic dimming switches: Lutron Ariadni AVLV-600P and Lutron Diva DVLV-600P
- IMPORTANT: When sizing transformer use 12 watts per LED fixture. Nominal power draw after start up is 8 watts. Any less or more voltage can cause premature failures.