

LUMARK

CARETAKER SERIES



Page Selection

- 2 Feature and Benefits
- 4 Common Applications
- 5 Feature and Specifications
- 6 Finishes

Dusk-to-dawn security made easy.

Superior illumination.
Low maintenance. Built to last.

The Caretaker LED dusk-to-dawn area luminaire combines high performance, low maintenance and easy installation in a simple, extremely economic package that has been designed for years of worry-free operation. The Caretaker luminaire is ideal for pole or wall mounted security lighting, residential street lighting, yard lighting, parking areas, loading platforms, boat docks, access drives or pathways.

Features and benefits

- Heavy-duty die-cast housing for durability and low maintenance in security lighting applications
- Universal wall and wood pole mount bracket for ease of installation in a variety of applications
- Integral slipfitter for pipe arm mounting for versatility in mounting configuration
- High performance LEDs deliver up to 12,200 lumens and replace up to 150W HID equivalents
- Precision optics deliver maximum efficacy and coverage
- 3-PIN NEMA twist-lock photocontrol (included) provides automatic dusk-to-dawn operation for maximum energy savings
- 6kV integral surge protection device protects drivers and LED components



Caretaker Nano
Max Lumens @ 4000K: 6500
HID Replacement: up to 100W
Weight: 4.25 lbs



Caretaker Nano with Refractor
Max Lumens @ 4000K: 6250
HID Replacement: up to 100W
Weight: 4.5 lbs



Caretaker 2 with Zero Uplight Shield
Max Lumens @ 4000K: 12,200
HID Replacement: up to 150W
Weight: 7 lbs



Caretaker 2 with Refractor
Max Lumens @ 4000K: 12,000
HID Replacement: up to 150W
Weight: 7 lbs

The Caretaker delivers ultimate performance and economic configurability for utility dusk-to-dawn applications.

2-Lane Rural Road
(100W HPS replacement)



Urban / Suburban Residential Street with Sidewalks
(70-100W HPS replacement)



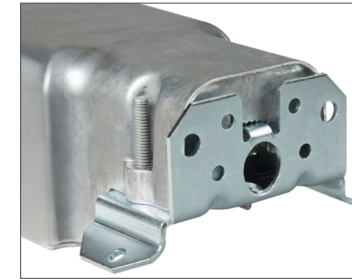
Marina / Dock
(70-100W HPS replacement)



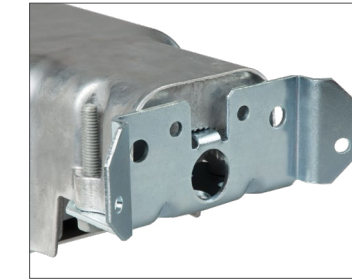
Rural Yard/Area
(70-100W HPS replacement)



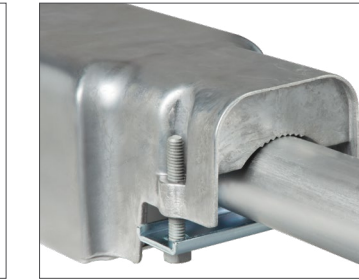
Design Features



Wall / square pole mount



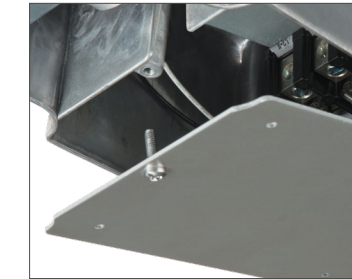
Wood pole mount



Pipe arm mount



Zero uplight shield



Single-point access

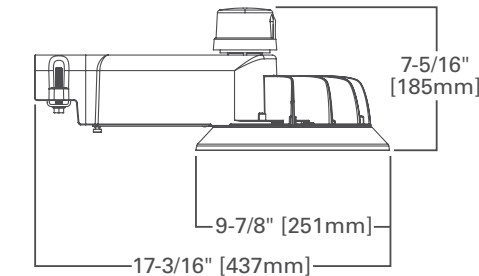


3-PIN NEMA receptacle

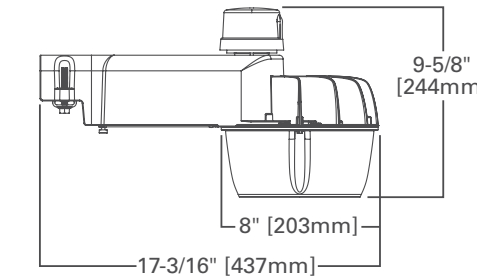
Dimensions

Caretaker 2 Dimensions

Standard Full Cutoff Configuration

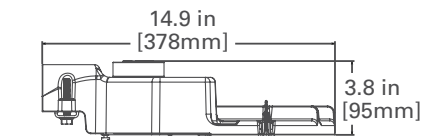


Small Acrylic Refractor Configuration

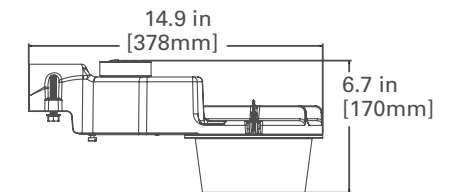


Caretaker Nano Dimensions

Standard Configuration



Refractor Configuration



Product specifications subject to change without notice. Visit cooperlighting.com to find the most up to date information.



Decorative Shield Options Hillbrook Hoods

Available Colors:



Raw Aluminum (A)



Black (BK)



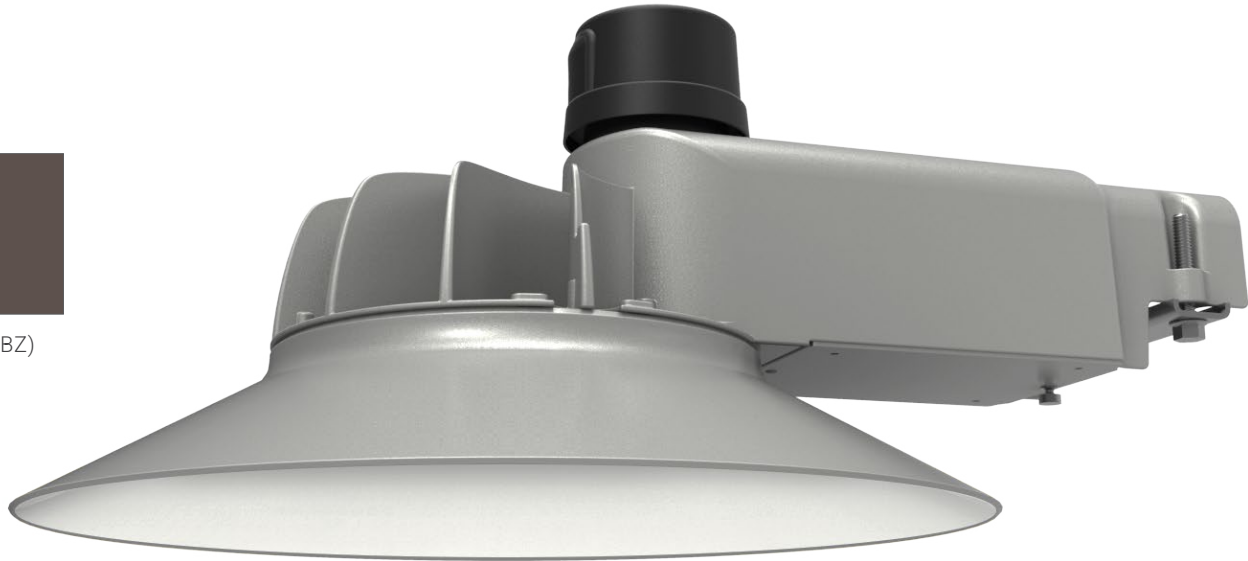
Bronze (BZ)



White (WH)



Grey (AP)



Decorative Shield Options RadioWave Hoods

Available Colors:



Raw Aluminum (A)



Black (BK)



Bronze (BZ)



White (WH)



Grey (AP)



LUMARK

VALUE-ENGINEERED SPECIFICATION GRADE

- High Performance, High Value
- Market-Leading Retrofit Solutions
- Design Configurability, Superior Uniformity
- In-Stock & MarketPro Benefits



LUMARK^{AP}

HIGH VALUE DISTRIBUTOR STOCK

- Most Popular Configurations
- Highest Value Outdoor Lighting
- Feature Focus, Service Friendly
- Always In-Stock & MarketPro Benefits

Lighting Product Lines

Ametrix
AtLite
Corelite
Ephesus
Fail-Safe
Halo
Halo Commercial
Invue
io
Iris
Lumark
Lumière
McGraw-Edison
Metalux
MWS
Neo-Ray
Portfolio
RSA
Shaper
Streetworks
Sure-Lites

Controls Product Lines

Fifth Light Technology
Greengate
iLight (International Only)
iLumin
Zero 88

Connected Lighting Systems

Distributed Low-Voltage Power
Halo Home
iLumin Plus
LumaWatt Pro
WaveLinx



Cooper Lighting Solutions
1121 Highway 74 South
Peachtree City, GA 30269
P: 770-486-4800
www.cooperlighting.com

Canada Sales
5925 McLaughlin Road
Mississauga, Ontario L5R 1B8
P: 905-501-3000
F: 905-501-3172

© 2026 Cooper Lighting Solutions
All Rights Reserved
Printed in USA
Publication No. BR500012EN
March 10, 2026 11:59 AM

Cooper Lighting Solutions is a registered trademark.

All other trademarks are property of their respective owners.

Product availability, specifications, and compliances are subject to change without notice.