

Lighting solutions

Steel spoke and upsweep brackets

FIG. 1

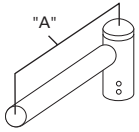


FIG. 3

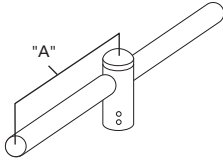


FIG. 5

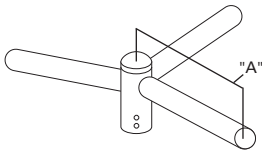


FIG. 2

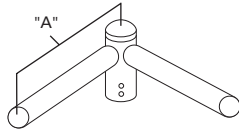


FIG. 4

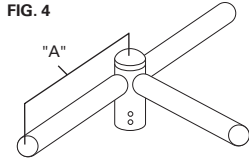
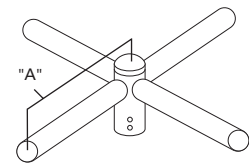


FIG. 6



SPOKE BRACKETS

Catalog Number	Figure	Number of Tenons	Arm Length "A" (Inches)	Maximum Weight (Pounds)
SB-100-08-2	1	1	8"	6
SB-100-12-2	1	1	12"	6
SB-100-15-2	1	1	15"	7
SB-100-24-2	1	1	24"	11
SB-100-30-2	1	1	30"	13
SB-100-36-2	1	1	36"	15
SB-290-08-2	2	2 at 90°	8"	9
SB-290-12-2	2	2 at 90°	12"	11
SB-290-15-2	2	2 at 90°	15"	13
SB-290-24-2	2	2 at 90°	24"	18
SB-290-30-2	2	2 at 90°	30"	22
SB-290-36-2	2	2 at 90°	36"	26
SB-218-08-2	3	2 at 180°	8"	9
SB-218-12-2	3	2 at 180°	12"	11
SB-218-15-2	3	2 at 180°	15"	13
SB-218-24-2	3	2 at 180°	24"	18
SB-218-30-2	3	2 at 180°	30"	22
SB-218-36-2	3	2 at 180°	36"	26
SB-390-08-2	4	3 at 90°	8"	11
SB-390-12-2	4	3 at 90°	12"	15
SB-390-15-2	4	3 at 90°	15"	17
SB-390-24-2	4	3 at 90°	24"	25
SB-390-30-2	4	3 at 90°	30"	30
SB-390-36-2	4	3 at 90°	36"	36
SB-312-08-2	5	3 at 120°	8"	11
SB-312-12-2	5	3 at 120°	12"	15
SB-312-15-2	5	3 at 120°	15"	17
SB-312-24-2	5	3 at 120°	24"	25
SB-312-30-2	5	3 at 120°	30"	30
SB-312-36-2	5	3 at 120°	36"	36
SB-490-08-2	6	4 at 90°	8"	13
SB-490-12-2	6	4 at 90°	12"	17
SB-490-15-2	6	4 at 90°	15"	21
SB-490-24-2	6	4 at 90°	24"	32
SB-490-30-2	6	4 at 90°	30"	39
SB-490-36-2	6	4 at 90°	36"	47

NOTES: Shipped with removable cap and mounting hardware assembled. Slipfitter fits 2 3/8" O.D. tenon. For hot dipped galvanized, add "G" to end of catalog number. Standard finish is bronze. Other finish colors available. Consult your lighting representative at Cooper Lighting Solutions or visit www.cooperlighting.com.

UPSWEEP BRACKETS

Catalog Number	Figure	Number of Tenons	Arm Length "A" (Inches)	Pole Tenon Size (O.D.)	Maximum Weight (Pounds)
UB1-4-2	7	1	48"	2-3/8"	21
UB1-6-2	7	1	72"	2-3/8"	28
UB1-8-2	7	1	96"	2-3/8"	41
UB2-4-2	8	2 at 180°	48"	2-3/8"	38
UB2-6-2	8	2 at 180°	72"	2-3/8"	52
UB2-8-2	8	2 at 180°	96"	2-3/8"	69

NOTES: Shipped with removable cap and mounting hardware assembled. For hot dipped galvanized, add "G" to end of catalog number. Standard finish is bronze. Other finish colors available. Consult your lighting representative at Cooper Lighting Solutions or visit www.cooperlighting.com.

FIG. 7

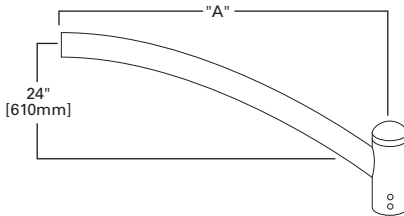
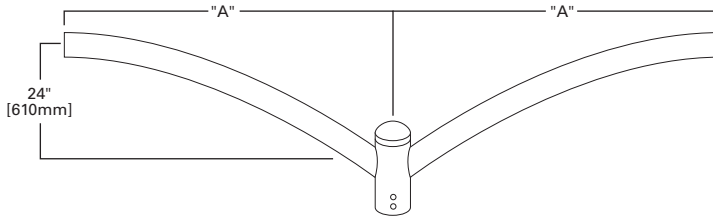


FIG. 8



WARNING: Customer is responsible for engineering analysis to confirm pole and fixture compatibility for all applications. Refer to pole white paper WP513001EN for additional support information. Before installing, make sure proper anchor bolts and templates are obtained. The use of unauthorized accessories such as banners, signs, cameras or pennants for which the pole was not designed voids the pole warranty and may result in pole failure causing serious injury or property damage. Information regarding total loading capacity can be supplied upon request. The pole warranty is void unless poles are used and installed as a complete pole and luminaire combination. This warranty specifically excludes failure as the result of a third party act or omission, misuse, unanticipated uses, fatigue failure or similar phenomena resulting from induced vibration, harmonic oscillation or resonance associated with movement of air currents around the product.

Specifications and dimensions subject to change without notice. Consult your lighting representative at Cooper Lighting Solutions or visit www.cooperlighting.com for available options, accessories and ordering information

Cooper Lighting Solutions is a registered trademark.

All other trademarks are property of their respective owners.

Product availability, specifications, and compliances are subject to change without notice.



Cooper Lighting Solutions
1121 Highway 74 South
Peachtree City, GA 30269
P: 770-486-4800
www.cooperlighting.com

© 2020 Cooper Lighting Solutions
All Rights Reserved
Printed in USA
Publication No. TD513023EN
May 9, 2017 3:53 PM